

图形符号



# 小型标准型气缸(铝缸筒) Small Cylinder (Aluminium Tube)

## TAM1, TADM1 (Ø20~Ø40) Series



### Common Specification(共同规格)

Bore(缸径)(mm)	Ø20	Ø25	Ø32	Ø40
Fluid(流体)	Clean Air(洁净空气)			
Action(动作形式)	Double/Single Acting(双/单动)			
Proof Press.(保证耐压力)	1.5MPa			
Max. Press.(最高使用压力)	0.99MPa			
Min. Press.(最低使用压力)	0.05MPa			
Amb.Temp.(环境及流体温度)	-5~+60°C			
Piston Speed(活塞速度)	50~750mm/s			
Cushion(缓冲)	Rubber(STD)两端橡胶缓冲(标准)/Air(Optional)气缓冲(任选)			
*Lubrication(润滑)	Not Necessary(不需要)			
Margin of Stroke Error (mm)(行程误差)	+1.4 0			
Pipe Size(接管口径)Rc(PT)	1/8"	1/8"	1/8"	1/4"

· Use Tubine Oil 1st-Grade ISOVG32, If Necessary(如需要润滑请用透平1号油ISOVG32)

### How To Order (型号表示方法)

20,25,32,40	25,50,75,100,125,150,200,250,300	Nil(空)   None(无) J   60°C	I   I Type Knuckle Joint (I型单肘接头) Y   Y Type Knuckle Joint (Y型双肘接头)
Bore 缸径	Stroke 行程	Amb.Temp.for Gaiter 伸缩保护套为周围温度	Accessory 附件

**TA D M1 L 25 - 100 A J Y - M9B S**

Magnet 有无磁环	
Nil(空)	None(无磁环)
D	Built-in Magnet(有磁环)

Mounting 附件号	
B	Basic Type(基本型)
E	Integrated Clevis Type (原装单U型钩)
L	Foot Type(脚座)
F	Front Flange(杆侧法兰)
R	Bracket(原装单U型钩接座)
Z	Boss Cut(无凸台型)

Cushion 缓冲	
Nil(空)	Rubber(橡胶缓冲)
A	Air Cushion(气缓冲)

*Auto Switch 磁性开关	
Nil(空)	None (无磁性开关)
A49	Reed Switch(带有接点磁性开关)
M9B	Reed Switch(带有接点磁性开关)
M9NP	Contactless Switch(无接点磁性开关)
C72K	Reed Switch(带有接点磁性开关)

No. of Auto Switch 磁性开关数量	
Nil(空)	2(个)
S	1(个)
3	3(个)

\*Auto Switch (磁性开关) 引线长度表示记号:  
无记号-1m(标准)  
L-3m  
Z-5m

### Part No. of Mounting(安装附件型号)

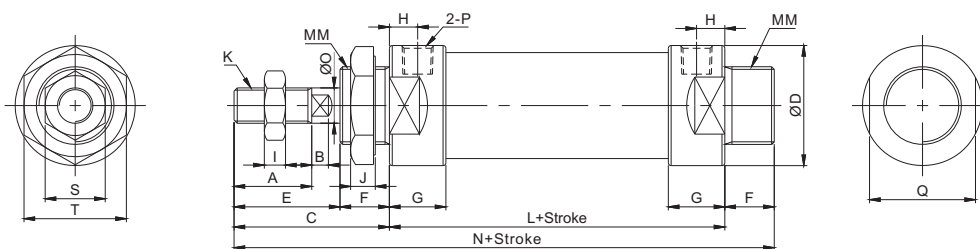
	Bore(缸径)	Ø20	Ø25	Ø32	Ø40
Accessory (安装附件)	E	TAM1-E020	TAM1-E025	TAM1-E032	TAM1-E040
	L	TAM1-L020	TAM1-L025	TAM1-L032	TAM1-L040
	F	TAM1-F020	TAM1-F025	TAM1-F032	TAM1-F040
	R	TAM1-R020	TAM1-R025	TAM1-R032	TAM1-R040
Accessory (连接附件)	I	TAM1-020I	TAM1-025I		TAM1-040I
	Y	TAM1-020Y	TAM1-025Y		TAM1-040Y

# 小型标准型气缸(铝缸筒) Small Cylinder (Aluminium Tube)

## TAM1, TADM1 (Ø20~Ø40) Series

### Dimensions(mm)(外形尺寸图(毫米))

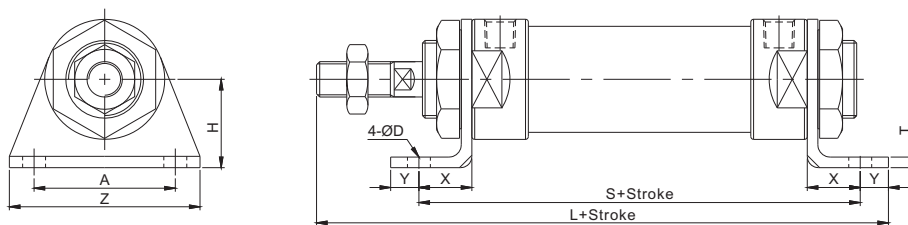
#### Basic Type(基本型) TAM1B, TADM1B



Bore (缸径)	A	B	C	D	E	F	G	H	I	J	K	L	MM	N	O	P	Q	S	T
Ø20	20	5	40	29	28	12	16	8	6	7	M8x1.25	70	M22x1.5	122	8	1/8"	25	12	29
Ø25	22	5.5	44	34	30	14	16	8	6	7	M10x1.25	70	M22x1.5	128	10	1/8"	30	17	29
Ø32	22	5.5	44	39.5	30	14	16	8	6	8	M10x1.25	70	M24x2.0	128	12	1/8"	35	17	32
Ø40	24	7	46	49.5	32	14	22	11	7	9	M12x1.25	92	M30x2.0	152	14	1/4"	45	17	41

### Dimensions(mm)(外形尺寸图(毫米))

#### Axial Foot Type(脚座型) TAM1L, TADM1L



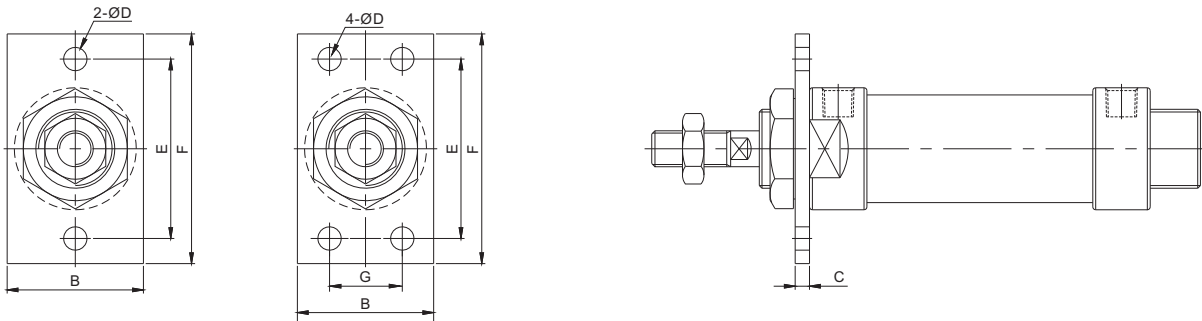
Bore(缸径)	A	D	H	L	S	T	X	Y	Z
Ø20	40	6.5	25	133	100	3	15	8	54
Ø25	40	6.5	25	137	100	3	15	8	54
Ø32	45	6.5	32	147	120	4	25	8	59
Ø40	50	6.5	36	171	142	4	25	8	64

# 小型标准型气缸(铝缸筒) Small Cylinder (Aluminium Tube)

## TAM1, TADM1 (Ø20~Ø40) Series

### Dimensions(mm)(外形尺寸图(毫米))

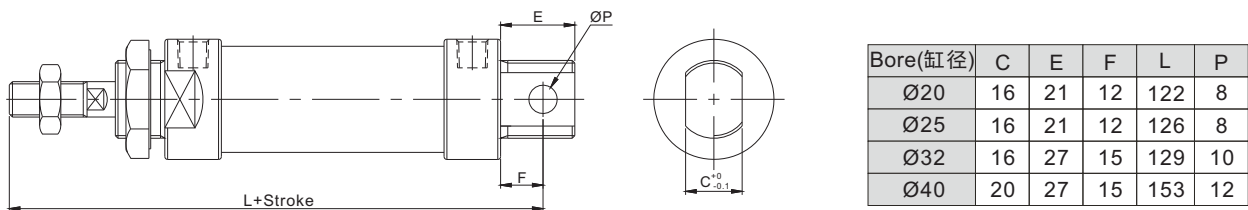
#### Front Flange Type(杆端法兰型) TAM1F, TADM1F



Bore(缸径)	B	C	D	E	F	G
Ø20	38	4	6.5	50	64	-
Ø25	38	4	6.5	50	64	-
Ø32	47	4	6.5	58	72	33
Ø40	50	4	6.5	70	84	36

### Dimensions(mm)(外形尺寸图(毫米))

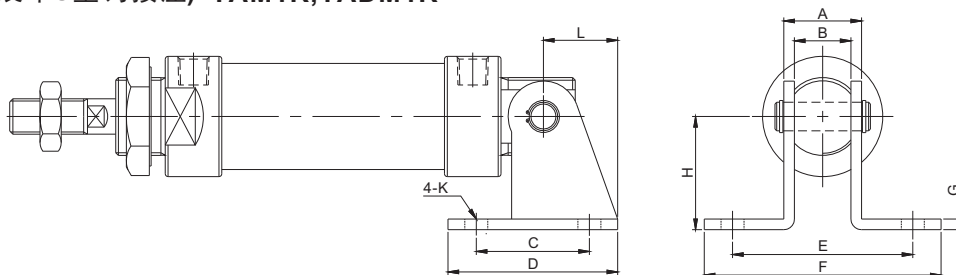
#### Integrated Double Clevis Type(原装单U型钩型) TAM1E, TADM1E



Bore(缸径)	C	E	F	L	P
Ø20	16	21	12	122	8
Ø25	16	21	12	126	8
Ø32	16	27	15	129	10
Ø40	20	27	15	153	12

### Dimensions(mm)(外形尺寸图(毫米))

#### Bracket(原装单U型钩接座) TAM1R, TADM1R



Bore(缸径)	A	B	C	D	E	F	G	H	L	K
Ø20	22	16	32	48	51	67	3	32	21	6.5
Ø25	22	16	32	48	51	67	3	32	21	6.5
Ø32	24	16	36	52	51	67	4	36	27	6.5
Ø40	28	20	40	56	55	71	4	40	27	6.5

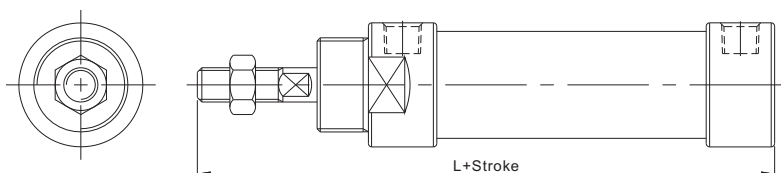
# 小型标准型气缸(铝缸筒)

## Small Cylinder (Aluminium Tube)

### TAM1, TADM1 (Ø20~Ø40) Series

#### Dimensions(mm)(外形尺寸图(毫米))

##### Boss Cut Type(尾部切削型) TAM1Z, TADM1Z

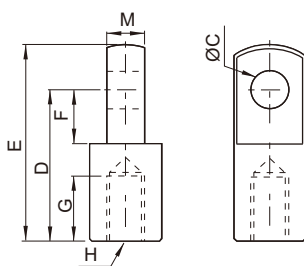


Bore(缸径)	L
Ø20	110
Ø25	114
Ø32	114
Ø40	138

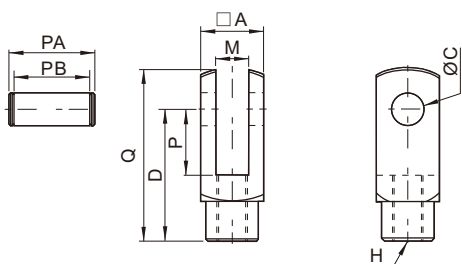
※Other dimensions are the same as for standard type.  
其它尺寸与标准型相同

#### Dimensions(mm)(外形尺寸图(毫米))

##### Accessory(附件)



Part No. (型号)	C	D	E	F	G	H	M
TAM1-020I	8	30	40	11	15	M8x1.25	8
TAM1-025I	10	40	50	15	20	M10x1.25	10
TAM1-040I	10	45	57	16	23	M10x1.25	14



Part No. (型号)	A	C	D	P	Q	M	H	PA	PB
TAM1-020Y	16	8	30	15	40	8	M8x1.25	21.6	16.8
TAM1-025Y	19	10	40	20	52	10	M10x1.25	25.6	19.8
TAM1-040Y	25.4	10	45	20	57	14	M12x1.25	32	26.2

# 小型标准型气缸(铝缸筒) Small Cylinder (Aluminium Tube)

## TAM1W, TADM1W(Ø20~Ø40) Series

### Order Example (订购举例)

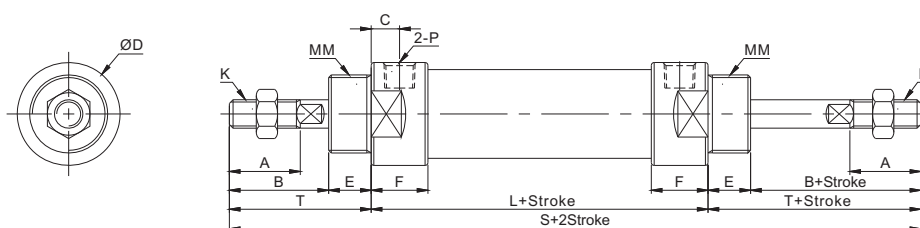
### Double Rod Type (双活塞杆型)

**TADM1WL20-50AJY-M9BS**  
① ② ③ ④ ⑤ ⑥ ⑦ ⑧ ⑨

- ① Magnet 有无磁环
- ② Mounting 附件安装方式
- ③ Bore 缸径
- ④ Stroke 行程
- ⑤ Cushion 缓冲
- ⑥ Gaiter 伸缩保护套
- ⑦ Accessory 附件
- ⑧ Auto Switch 磁性开关
- ⑨ No. of Auto Switch 磁性开关数量

### Dimensions(mm)(外形尺寸图(毫米))

#### Double Rod Type(双活塞杆型) TAM1W, TADM1W



Bore(缸径)	A	B	C	ØD	E	F	K	L	MM	P(PT)	S	T
Ø20	20	28	8	29	12	16	M8x1.25	70	M22x1.5	1/8"	150	40
Ø25	22	30	8	34	14	16	M10x1.25	70	M22x1.5	1/8"	158	44
Ø32	22	30	8	39.5	14	16	M10x1.25	70	M24x2.0	1/8"	158	44
Ø40	24	32	11	49.5	14	22	M12x1.25	92	M30x2.0	1/4"	184	46

### Order Example (订购举例)

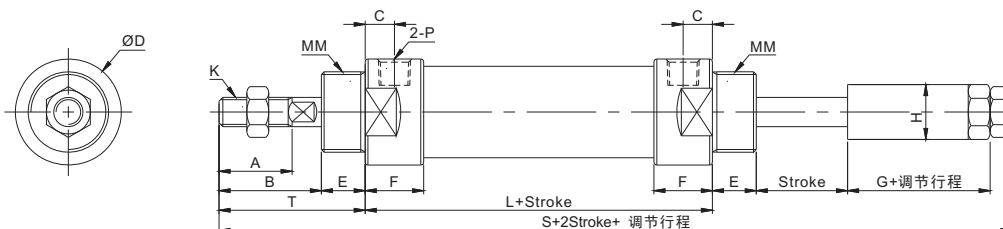
### Adjustable Stroke Cylinder (可调节行程气缸)

#### Extension Adjustable Type 伸出调整型

**TADM1B40-100AY-M9BS-XC8**  
① ② ③ ④ ⑤ ⑥ ⑦ ⑧

- ① Magnet 有无磁环
- ② Mounting 附件安装方式
- ③ Bore 缸径
- ④ Stroke 行程
- ⑤ Cushion 缓冲
- ⑥ Accessory 附件
- ⑦ Auto Switch 磁性开关
- ⑧ No. of Auto Switch 磁性开关数量

### Dimensions(mm)(外形尺寸图(毫米))



Bore(缸径)	A	B	C	ØD	E	F	G	H	K	L	MM	P(PT)	S	T
Ø20	20	28	8	29	12	16	19	15	M8x1.25	70	M22x1.5	1/8"	147	40
Ø25	22	30	8	34	14	16	21	20	M10x1.25	70	M22x1.5	1/8"	155	44
Ø32	22	30	8	39.5	14	16	21	20	M10x1.25	70	M24x2.0	1/8"	155	44
Ø40	24	32	11	49.5	14	22	21	25	M12x1.25	92	M30x2.0	1/4"	180	46

# 小型标准型气缸/单动弹簧压回

## Small Cylinder / Single Acting Spring Return

### TAM1, TADM1 (Ø20~Ø40) Series

Order Example (订购举例)

Single Acting Spring Return(S)(单动弹簧压回)

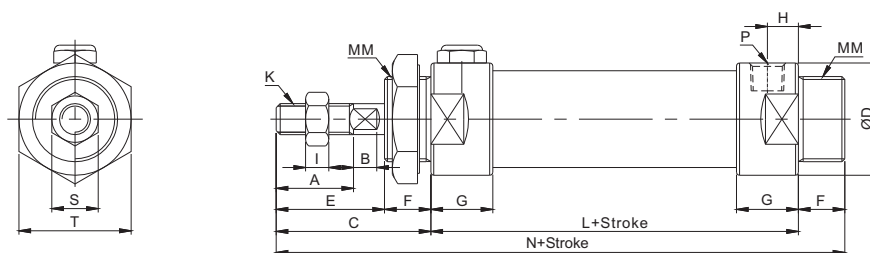
**TADM1B32-50S-AY-M9BS**

① ② ③ ④ ⑤ ⑥ ⑦ ⑧

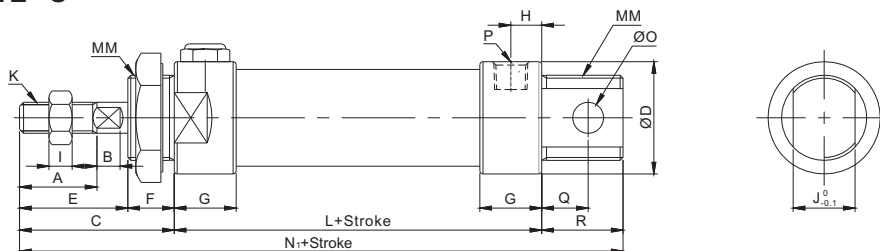
- ① Magnet 有无磁环
- ② Mounting 附件安装方式
- ③ Bore 缸径
- ④ Stroke 行程
- ⑤ Cushion 缓冲
- ⑥ Accessory 附件
- ⑦ Auto Switch 磁性开关
- ⑧ No. of Auto Switch 磁性开关数量

#### Dimensions(mm)(外形尺寸图(毫米))

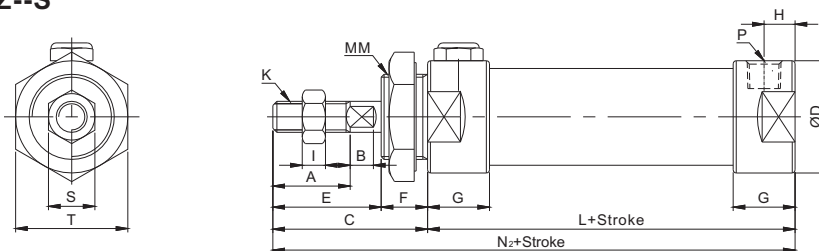
##### TAM1B, TADM1B--S



##### TAM1E, TADM1E--S



##### TAM1Z, TADM1Z--S



Bore (缸径)	A	B	C	ØD	E	F	G	H	I	J	K	L			N		
												0~50	51~100	≥101	0~50	51~100	≥101
Ø20	20	5	40	29	28	12	16	8	6	16	M8x1.25	95	120	145	147	172	197
Ø25	22	5.5	44	34	30	14	16	8	6	16	M10x1.25	95	120	145	153	178	203
Ø32	22	5.5	44	39.5	30	14	16	8	6	16	M10x1.25	95	120	145	153	178	203
Ø40	24	7	46	49.5	32	14	22	11	7	20	M12x1.25	117	142	167	177	202	227
Bore (缸径)	N1			N2			ØO	P	Q	R	S	T	MM				
	0~50	51~100	≥101	0~50	51~100	≥101											
Ø20	156	181	206	135	160	185	8	1/8"	12	21	12	29	M22x1.5				
Ø25	160	185	210	139	164	189	8	1/8"	12	21	17	29	M22x1.5				
Ø32	166	191	216	139	164	189	10	1/8"	15	27	17	32	M24x2.0				
Ø40	190	215	240	163	188	213	12	1/4"	15	27	17	41	M30x2.0				

# 小型标准型气缸/单动弹簧压出 Small Cylinder / Single Acting Spring Extended

## TAM1, TADM1 (Ø20~Ø40) Series

Order Example (订购举例)

Single Acting Spring Extended(T) (单动弹簧压出)

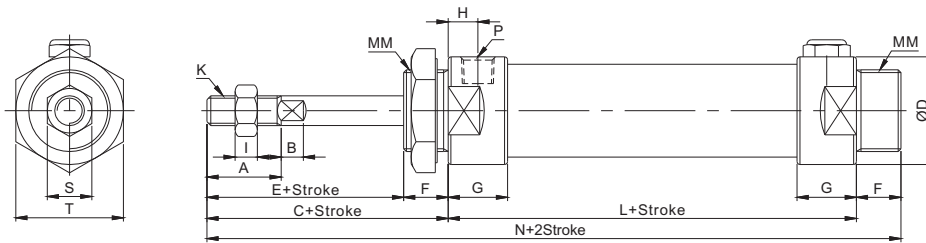
**TADM1B32-50T-AY-M9BS**

① ② ③ ④ ⑤ ⑥ ⑦ ⑧

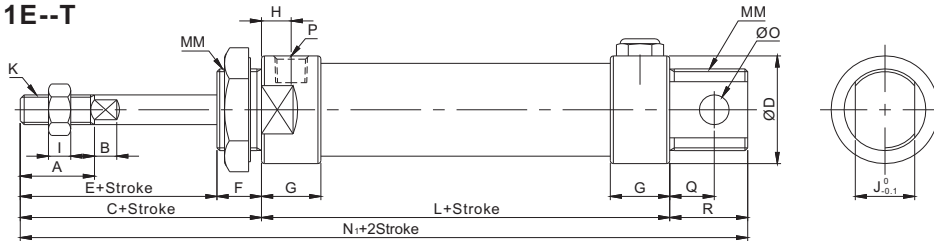
- ① Magnet 有无磁环
- ② Mounting 附件安装方式
- ③ Bore 缸径
- ④ Stroke 行程
- ⑤ Cushion 缓冲
- ⑥ Accessory 附件
- ⑦ Auto Switch 磁性开关
- ⑧ No. of Auto Switch 磁性开关数量

### Dimensions(mm)(外形尺寸图(毫米))

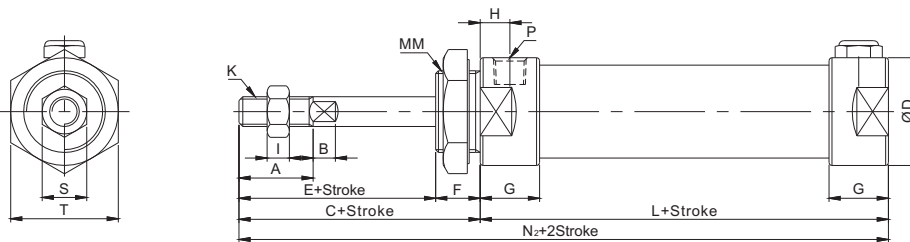
#### TAM1B, TADM1B--T



#### TAM1E, TADM1E--T



#### TAM1Z, TADM1Z--T



Bore (缸径)	A	B	C	ØD	E	F	G	H	I	J	K	L				MM	N	
												0~25	26~50	51~75	76~100		0~25	26~50
Ø20	20	5	40	29	28	12	16	8	6	16	M8x1.25	85	95	110	120	M22x1.5	137	147
Ø25	22	5.5	44	34	30	14	16	8	6	16	M10x1.25	85	95	110	120	M22x1.5	143	153
Ø32	22	5.5	44	39.5	30	14	16	8	6	16	M10x1.25	85	95	115	125	M24x2.0	143	153
Ø40	24	7	46	49.5	32	14	22	11	7	20	M12x1.25	107	117	137	147	M30x2.0	167	177
Bore (缸径)	N		N <sub>1</sub>				N <sub>2</sub>				ØO	P	Q	R	S	T		
	51~75	76~100	0~25	26~50	51~75	76~100	0~25	26~50	51~75	76~100								
Ø20	162	172	146	156	171	181	125	135	150	160	8	1/8"	12	21	12	29		
Ø25	168	178	150	160	175	185	129	139	154	164	8	1/8"	12	21	17	29		
Ø32	173	183	156	166	186	196	129	139	159	169	10	1/8"	15	27	17	32		
Ø40	197	207	180	190	210	220	153	163	183	193	12	1/4"	15	27	17	41		