

# 小型标准气缸(不锈钢缸筒)

## Small Cylinder(SUS Tube)

### TADM2(Ø16~Ø40) Series

1

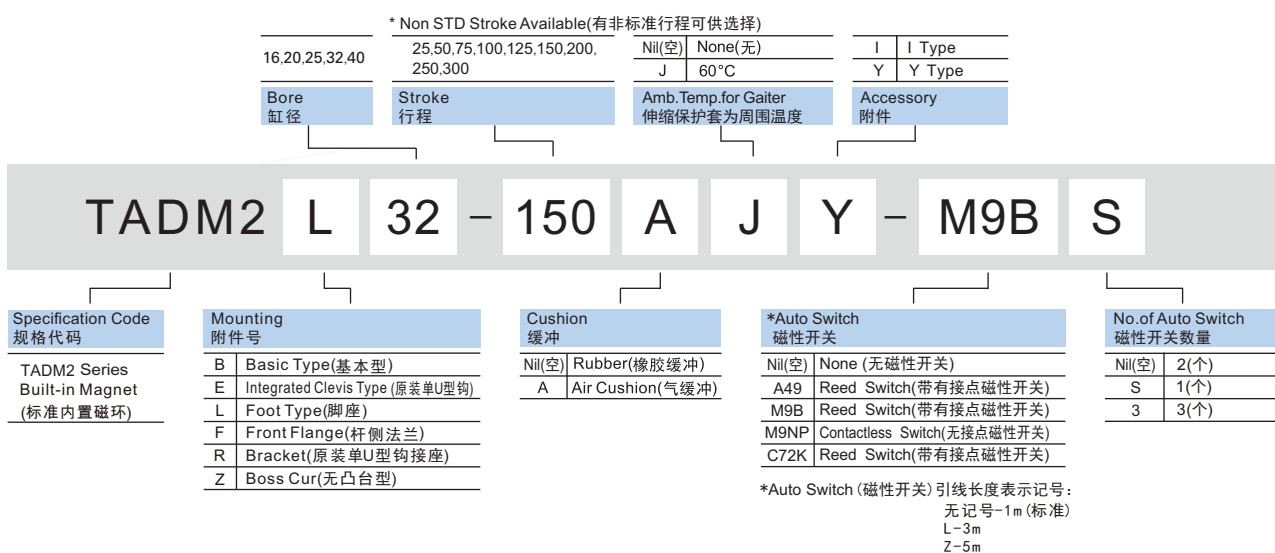


#### Common Specification(共同规格)

Bore(缸径)(mm)	Ø16	Ø20	Ø25	Ø32	Ø40
Fluid(流体)	Clean Air(洁净空气)				
Action(动作形式)	Double/Single Acting(双/单动)				
Proof Press.(保证耐压力)	1.5MPa				
Max. Press.(最高使用压力)	0.99MPa				
Min. Press.(最低使用压力)	0.05MPa				
Amb.Temp.(环境及流体温度)	-5~+60°C				
Piston Speed(活塞速度)	50~750mm/s				
Cushion(缓冲)	Rubber(STD)两端橡胶缓冲(标准),Air(Option)气缓冲(任选)				
*Lubrication(润滑)	No Necessary (不需要)				
Margin of Stroke Error (mm)(行程误差)	+1.4 0				
Pipe Size(接管口径)Rc(PT)	M5x0.8	1/8"	1/8"	1/8"	1/8"

· Use Tubine Oil 1st-Grade ISOVG32,If Necessary(如需要润滑请用透平1号油ISOVG32)

#### How To Order (型号表示方法)



#### Part No. of Mounting(安装附件型号)

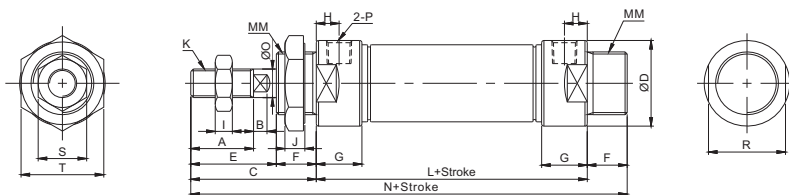
	Bore(缸径)	Ø16	Ø20	Ø25	Ø32	Ø40
Accessory (安装附件)	E	TADM2-E016	TADM2-E020	TADM2-E025	TADM2-E032	TADM2-E040
	L	TADM2-L016	TADM2-L020	TADM2-L025	TADM2-L032	TADM2-L040
	F	TADM2-F016	TADM2-F020	TADM2-F025	TADM2-F032	TADM2-F040
	R	TADM2-R016	TADM2-R020	TADM2-R025	TADM2-R032	TADM2-R040
Accessory 连接附件	I	TADM2-016I	TADM2-020I	TADM2-025I	TADM2-032I	TADM2-040I
	Y	TADM2-016Y	TADM2-020Y	TADM2-025Y	TADM2-032Y	TADM2-040Y

# 小型标准气缸(不锈钢缸筒) Small Cylinder(SUS Tube)

## TADM2(Ø16~Ø40) Series

### Dimensions(mm)(外形尺寸图(毫米))

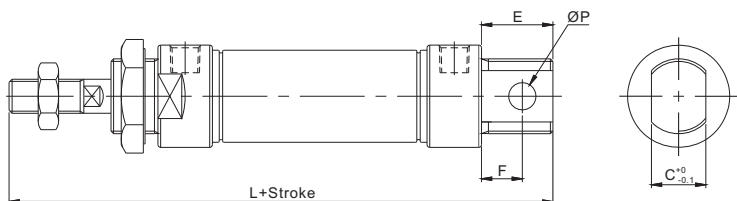
#### Basic Type (基本型) TADM2B



Bore(缸径)	A	B	C	ØD	E	F	G	H	I	J	K	L	MM	N	ØO	P	R	S	T
Ø16	16	5	38	21	22	16	13	8	5	6	M6x1.0	60	M16x1.5	114	6	M5	18	10	22
Ø20	20	5	40	27	28	12	16	8	6	7	M8x1.25	76	M22x1.5	128	8	1/8"	24	12	29
Ø25	22	5.5	44	30	30	14	16	8	6	7	M10x1.25	76	M22x1.5	134	10	1/8"	27	17	29
Ø32	22	5.5	44	35	30	14	16	8	6	8	M10x1.25	76	M24x2.0	134	12	1/8"	30	17	32
Ø40	24	7	46	44.5	32	14	16	11	7	9	M12x1.25	76	M30x2.0	136	16	1/8"	38	17	41

### Dimensions(mm)(外形尺寸图(毫米))

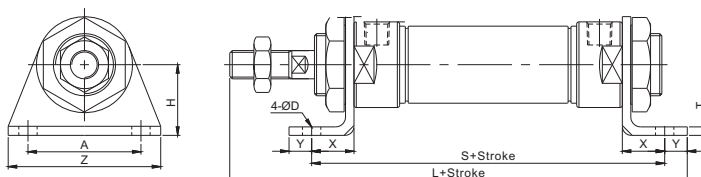
#### Integrated Double Clevis Type (原装单U型钩) TADM2E



Bore(缸径)	C	E	F	L	P
Ø16	12	16	9	114	6
Ø20	16	21	12	137	8
Ø25	16	21	12	141	8
Ø32	16	27	15	147	10
Ø40	20	27	15	149	12

### Dimensions(mm)(外形尺寸图(毫米))

#### Axial Foot Type(脚座型) TADM2L



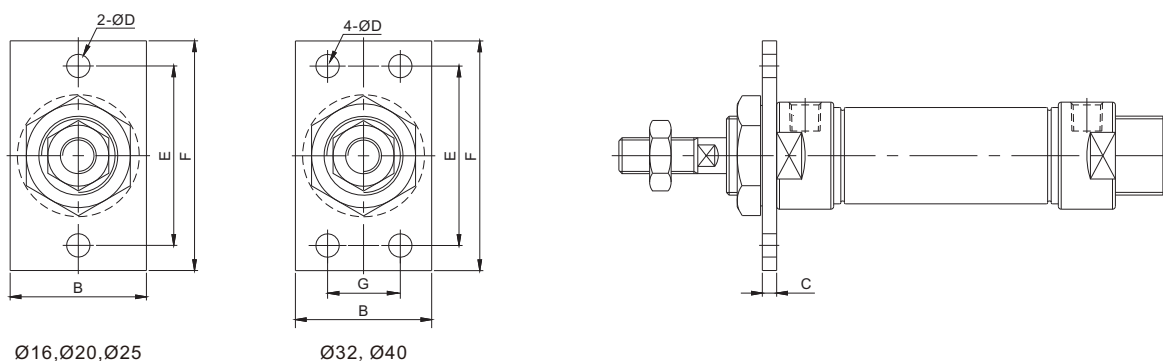
Bore(缸径)	A	ØD	H	L	S	T	X	Y	Z
Ø16	32	5.5	20	117	86	3	13	6	44
Ø20	40	6.5	25	147	106	3	15	8	54
Ø25	40	6.5	25	151	106	3	15	8	54
Ø32	45	6.5	32	161	126	4	25	8	59
Ø40	50	6.5	36	163	126	4	25	8	64

# 小型标准气缸(不锈钢缸筒) Small Cylinder(SUS Tube)

## TADM2(Ø16~Ø40) Series

### Dimensions(mm)(外形尺寸图(毫米))

#### Front Flange Type(杆端法兰型) TADM2F



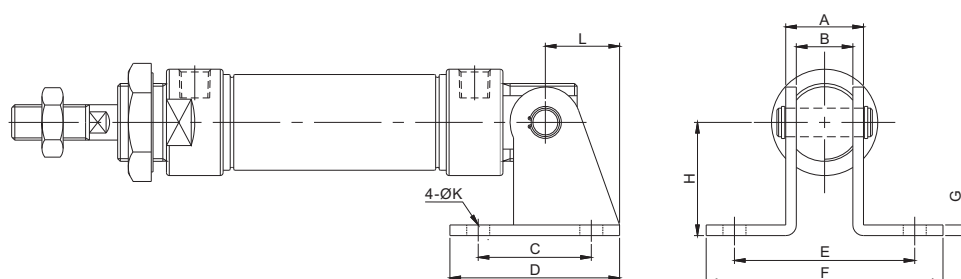
Ø16, Ø20, Ø25

Ø32, Ø40

Bore(缸径)	B	C	ØD	E	F	G
Ø16	26	3	5.5	40	52	-
Ø20	38	4	6.5	50	64	-
Ø25	38	4	6.5	50	64	-
Ø32	47	4	6.5	58	72	33
Ø40	50	4	6.5	70	84	36

### Dimensions(mm)(外形尺寸图(毫米))

#### Bracket(原装单U型钩接座) TADM2R



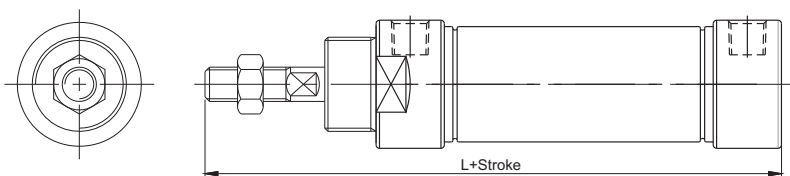
Bore(缸径)	A	B	C	D	E	F	G	H	L	K
Ø16	16	12	12	23	-	-	2	20	16	5.5
Ø20	22	16	32	48	51	67	3	32	21	6.5
Ø25	22	16	32	48	51	67	3	32	21	6.5
Ø32	24	16	36	52	51	67	4	36	27	6.5
Ø40	28	20	40	56	55	71	4	40	27	6.5

# 小型标准气缸(不锈钢缸筒) Small Cylinder(SUS Tube)

## TADM2(Ø16~Ø40) Series

### Dimensions(mm)(外型尺寸图(毫米))

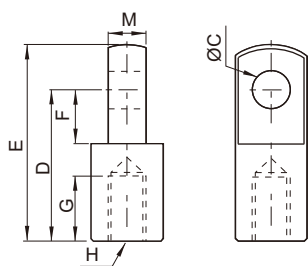
#### Boss Cut (无凸台型) TADM2Z



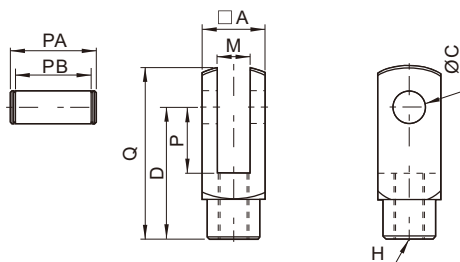
Bore(缸径)	L
Ø16	98
Ø20	116
Ø25	120
Ø32	120
Ø40	122

### Dimensions(mm)(外型尺寸图(毫米))

#### Accessory(附件)



Part No. 型号	C	D	E	F	G	H	M
TAM1-020I	8	30	40	11	15	M8x1.25	8
TAM1-025I	10	40	50	15	20	M10x1.25	10
TAM1-040I	10	45	57	16	23	M10x1.25	14



Part No. 型号	A	C	D	P	Q	M	H	PA	PB
TAM1-020Y	16	8	30	15	40	8	M8x1.25	21.6	16.8
TAM1-025Y	19	10	40	20	52	10	M10x1.25	25.6	19.8
TAM1-040Y	25.4	10	45	20	57	14	M12x1.25	32	26.2

# 小型标准气缸/双活塞杆型 Small Cylinder/Double Rod

## TADM2(Ø16~Ø40) Series

Order Example (订购举例)

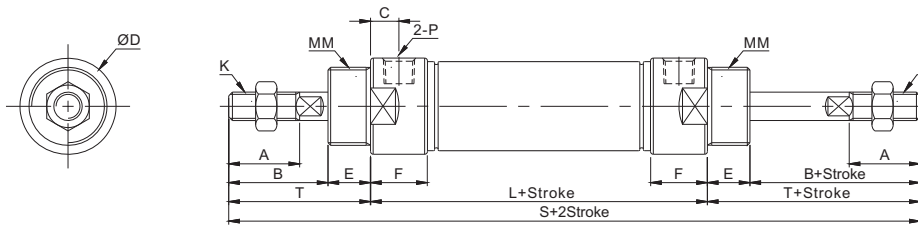
Double Rod Cylinder(双活塞杆型)

**TADM2WB32-100Y-M9BS**  
① ② ③ ④ ⑤ ⑥

- ① Mounting 安装方式
- ② Bore 缸径
- ③ Stroke 行程
- ④ Accessory 附件
- ⑤ Auto Switch 磁性开关
- ⑥ No. of Auto Switch 磁性开关数量

Dimensions(mm)(外形尺寸图(毫米))

Double Rod Type (双活塞杆型) TADM2W



Bore(缸径)	A	B	C	ØD	E	F	K	L	MM	P(PT)	S	T
Ø16	16	22	8	21	16	13	M6x1.0	60	M16x1.5	M5	136	38
Ø20	20	28	8	27	12	16	M8x1.25	76	M22x1.5	1/8"	156	40
Ø25	22	30	8	30	14	16	M10x1.25	76	M22x1.5	1/8"	164	44
Ø32	22	30	8	35	14	16	M10x1.25	76	M24x2.0	1/8"	164	44
Ø40	24	32	11	44.5	14	16	M12x1.25	76	M30x2.0	1/8"	168	46

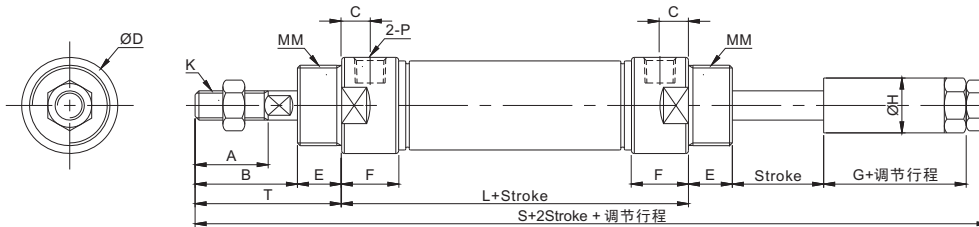
Order Example (订购举例)

Adjustable Stroke Cylinder (可调节行程气缸)

Extension Adjustable Type(伸出调整型)

**TADM2B32-100BY-M9BS -XC8**  
① ② ③ ④ ⑤ ⑥

- ① Mounting 安装方式
- ② Bore 缸径
- ③ Stroke 行程
- ④ Accessory 附件
- ⑤ Auto Switch 磁性开关
- ⑥ No. of Auto Switch 磁性开关数量
- Stroke Adjust 行程调节  
B: Stroke adjusting range 0~50mm  
行程可调节范围为0~50mm



Bore(缸径)	A	B	C	D	E	F	G	H	K	L	MM	P(PT)	S	T
Ø16	16	22	8	21	16	13	16	15	M6x1.0	60	M16x1.5	M5	135	38
Ø20	20	28	8	27	12	16	19	15	M8x1.25	76	M22x1.5	1/8"	153	40
Ø25	22	30	8	30	14	16	21	20	M10x1.25	76	M22x1.5	1/8"	161	44
Ø32	22	30	8	35	14	16	21	20	M10x1.25	76	M24x2.0	1/8"	161	44
Ø40	24	32	11	43.5	14	16	21	25	M12x1.25	76	M30x2.0	1/8"	164	46

# 小型标准气缸/单动弹簧压回 Small Cylinder/ Single Acting Spring Return

## TADM2-S(Ø16~Ø40) Series

Order Example (订购举例)

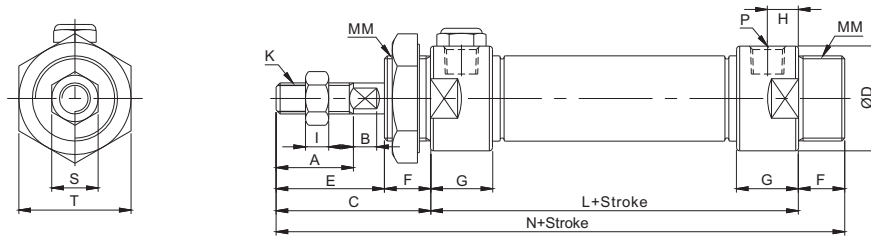
Single Acting Spring Return(S) (单动弹簧压回)

**TADM2B32-50SY-M9BS**  
① ② ③ ④ ⑤ ⑥ ⑦

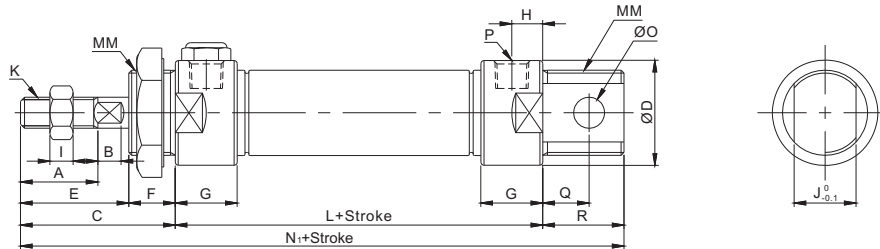
- ① Mounting 安装方式
- ② Bore 缸径
- ③ Stroke 行程
- ④ Action 动作形式
- ⑤ Accessory 附件
- ⑥ Auto Switch 磁性开关
- ⑦ No. of Auto Switch 磁性开关数量

### Dimensions(mm)(外形尺寸图(毫米))

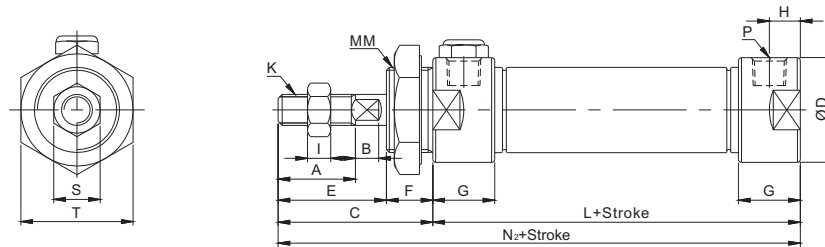
#### TADM2B--S



#### TADM2E--S



#### TADM2Z--S



Bore (缸径)	A	B	C	ØD	E	F	G	H	I	J	K	L			N		
												0~50	51~100	≥ 101	0~50	51~100	≥101
Ø16	16	4	38	21	22	16	13	8	5	12	M6x1.0	85	110	-	123	148	-
Ø20	20	5	40	27	28	12	16	8	6	16	M8x1.25	101	126	151	141	166	191
Ø25	22	5.5	44	30	30	14	16	8	6	16	M10x1.25	101	126	151	145	170	195
Ø32	22	5.5	44	35	30	14	16	8	6	16	M10x1.25	101	126	151	145	170	195
Ø40	24	7	46	44.5	32	14	16	11	7	20	M12x1.25	101	126	151	147	172	197

Bore (缸径)	N <sub>1</sub>			ØO	P	Q	R	S	T	MM
	0~50	51~100	≥101							
Ø16	139	164	-	6	M5	9	16	10	22	M16x1.5
Ø20	162	187	212	8	1/8"	12	21	12	29	M22x1.5
Ø25	166	191	216	8	1/8"	12	21	17	29	M22x1.5
Ø32	172	197	222	10	1/8"	15	27	17	32	M24x2.0
Ø40	174	199	224	12	1/8"	15	27	17	41	M30x2.0

# 小型标准气缸/单动弹簧压出 Small Cylinder/ Single Acting Spring Extended

## TADM2-T(Ø16~Ø40) Series

Order Example (订购举例)

Single Acting Spring Extended(T) (单动弹簧压出)

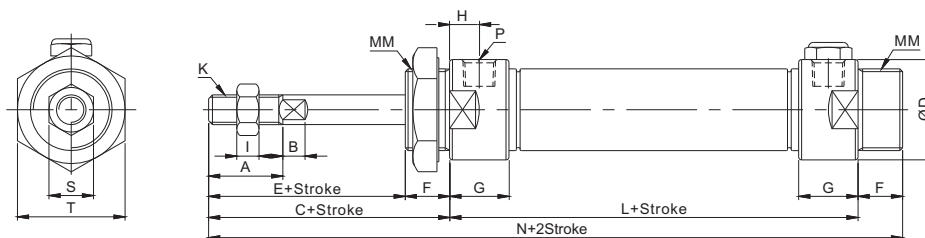
**TCDM2B32-50TY-M9BS**  
① ② ③ ④ ⑤ ⑥ ⑦ ⑧

- ① Magnet 有无磁环
- ② Mounting 附件安装方式
- ③ Bore 缸径
- ④ Stroke 行程
- ⑤ Action 动作形式
- ⑥ Accessory 附件
- ⑦ Auto Switch 磁性开关
- ⑧ No. of Auto Switch 磁性开关数量

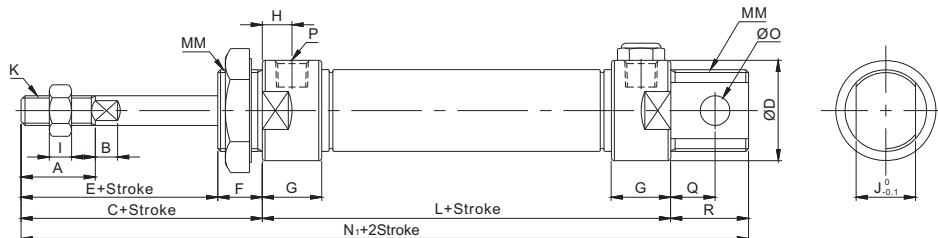
### Dimensions(mm)(外形尺寸图(毫米))

Spring Extended Type (弹簧压出)

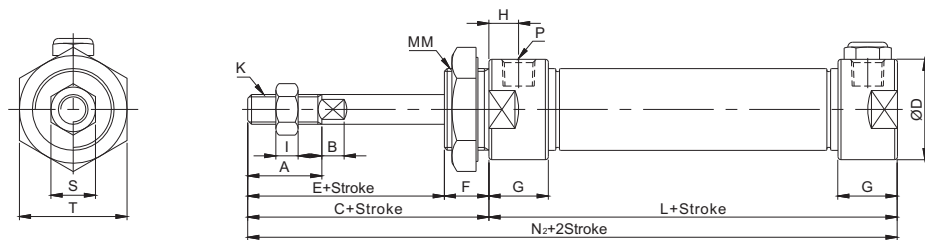
TADM2B--T



TADM2E--T



TADM2Z--T



Bore (缸径)	A	B	C	D	E	F	G	H	I	J	K	L				MM	N	
												0~25	26~50	51~75	76~100		0~25	26~50
Ø16	16	4	38	21	22	16	13	8	5	12	M6x1.0	75	85	100	110	M16x1.5	129	139
Ø20	20	5	40	27	28	12	16	8	6	16	M8x1.25	91	101	116	126	M22x1.5	143	153
Ø25	22	5.5	44	30	30	14	16	8	6	16	M10x1.25	91	101	116	126	M22x1.5	149	159
Ø32	22	5.5	44	35	30	14	16	8	6	16	M10x1.25	91	101	121	121	M24x2.0	149	159
Ø40	24	7	46	44.5	32	14	16	11	7	20	M12x1.25	91	101	121	131	M30x2.0	151	161

Bore (缸径)	N		N <sub>1</sub>		N <sub>2</sub>		O	P	Q	R	S	T				
	51~75	76~100	0~25	26~50	0~25	26~50							51~75	76~100		
Ø16	154	164	129	139	154	164	113	123	138	148	6	M5	9	16	10	22
Ø20	168	178	152	162	177	187	131	141	156	166	8	1/8"	12	21	12	29
Ø25	174	184	156	166	181	191	135	145	160	170	8	1/8"	12	21	17	29
Ø32	179	179	162	172	192	192	135	145	165	165	10	1/8"	15	27	17	32
Ø40	181	191	164	174	294	204	137	147	167	177	12	1/8"	15	27	17	41



# 直接安装气缸/标准内置磁环 Direct Mounting Cylinder/Built-in Magnet

## TADM2R(Ø20~Ø40) Series



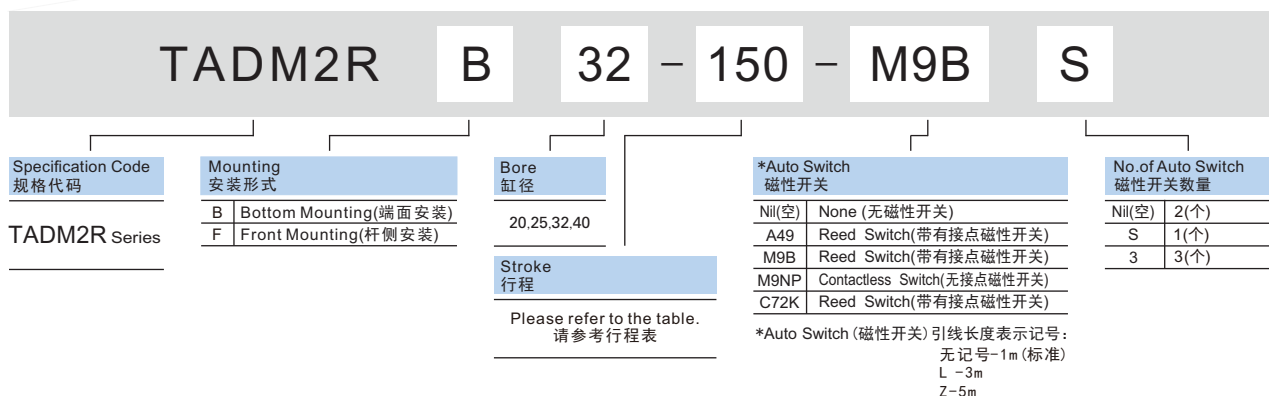
### Common Specification(共同规格)

Bore(缸径)(mm)	Ø20	Ø25	Ø32	Ø40
Fluid(流体)	Clean Air(洁净空气)			
Action(动作形式)	Double/Single Acting(双/单动)			
Proof Press.(保证耐压力)	1.5Mpa			
Max Press.(最高使用压力)	0.99Mpa			
Min Press.(最低使用压力)	0.05Mpa			
Amb.Temp.(环境和流体温度)	-5~+60°C(未冻结)			
Cushion(缓冲)	Rubber(STD)两端橡胶缓冲(标准),Air(Option)气缓冲(任选)			
Stroke Tolerance(行程公差)	+1.4 0			
Piston Speed(活塞速度)	50~750mm/s			

### Features(特征)

- Space saving design.
- Built-in magnet(STD).
- Non lube type.
- Compact and light weight.
- 节省空间
- 内置磁环(标准)
- 不锈钢缸筒,无油润滑,使用寿命长
- 结构紧凑,重量轻

### How To Order (型号表示方法)



### Standard Stroke (标准行程)

Bore(缸径)	Stroke(标准行程)
Ø20	25,50,75,100,125,150
Ø25	25,50,75,100,125,150,200
Ø32	25,50,75,125,150,200
Ø40	25,50,75,100,125,150,200,250,300



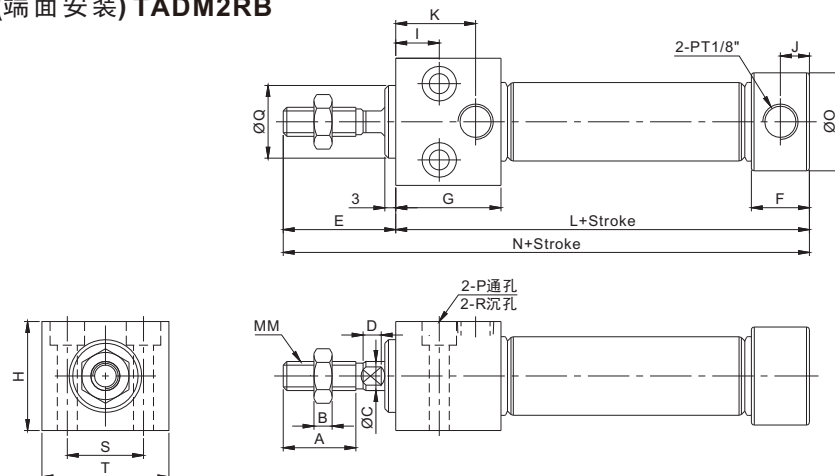
## 直接安装气缸/标准内置磁环

## Direct Mounting Cylinder/Built-in Magnet

## TADM2R(Ø20~Ø40) Series

## Dimensions(mm)(外形尺寸图(毫米))

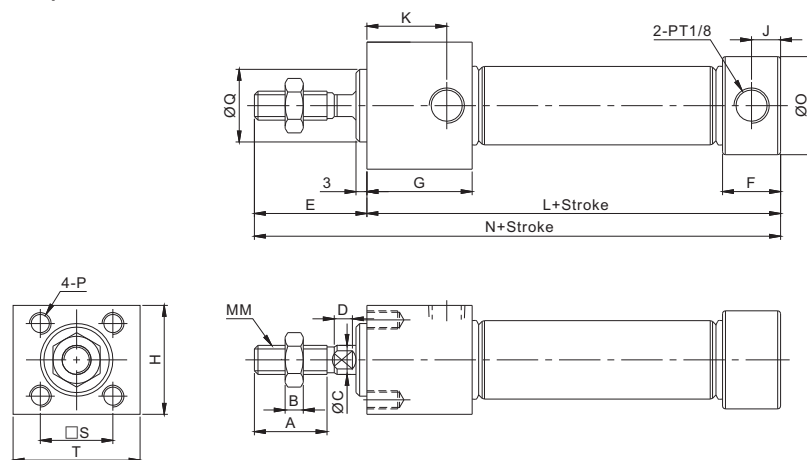
## Bottom Mounting(端面安装) TADM2RB



Bore(缸径)	A	B	ØC	D	E	F	G	H	I	J	K	L	MM	N	ØO	P	ØQ	R	S	T
Ø20	20	5	8	5	31	16	29	30.3	12	8	22	89	M8x1.25	120	27	Ø5.5	20	Ø9.5深6.5	21	33.5
Ø25	22	6	10	5.5	33	16	29	36.3	12	8	22	89	M10x1.25	122	30	Ø6.6	26	Ø11深7.5	25	39
Ø32	22	6	12	5.5	33	16	29	42.3	12	8	22	89	M10x1.25	122	35	Ø9	26	Ø14深10	30	47
Ø40	24	8	16	7	35	16	37.5	52.3	15	8	27	97.6	M14x1.5	133	44.5	Ø11	32	Ø17.5深12.5	38	58.5

## Dimensions(mm)(外形尺寸图(毫米))

## Front Mounting(杆侧安装) TADM2RF



Bore(缸径)	A	B	ØC	D	E	F	G	H	J	K	L	MM	N	ØO	P	ØQ	S	T
Ø20	20	5	8	5	31	16	29	30.3	8	22	89	M8x1.25	120	27	M5x0.8深9	20	22	30.5
Ø25	22	6	10	5.5	33	16	29	36.3	8	22	89	M10x1.25	122	30	M6x1.0深11	26	26	36.5
Ø32	22	6	12	5.5	33	16	29	42.3	8	22	89	M10x1.25	122	35	M6x1.0深11	26	30	42.5
Ø40	24	8	16	7	35	16	37.5	52.3	8	27	97.6	M14x1.5	133	44.5	M8x1.25深14	32	36	52.5