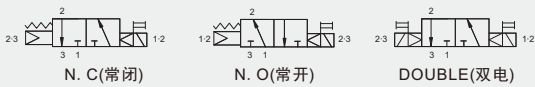


# 三通先导式电磁阀

## 3 Way Pilot Type Solenoid Valve

### TVP742 Series

图形符号



#### Common Specification (共同规格)

Fluid (流体)	Compressed Air & Inert Gases (压缩空气, 惰性气体)
Port Size(接管口径)	Rc(PT)1/2
Ambient&fluid Temp.(周围及流体温度)	5°C~60°C
Response Time (应答时间)	≤25ms(0.5Mpa时)
Power Consumption (电力消耗)	DC: 2.5W    AC:5.5VA(60Hz)
Max.Cycles(最大操作频率)	5c/s(次/秒)
Operating Pressure(使用压力)	0.15~1Mpa
Manual Override(手动操作)	Push Button (standard)(按钮)(标准) Locking Type(锁定型)
Coil Insulation(绝缘等级)	Class F (F级)
Allowable Voltage (容许电压变动范围)	Rated Voltage(额定电压)±10%
Effective Sectional Area (有效截面积)	65mm <sup>2</sup> (CV=3.5)
Lubrication (润滑)	Not Required(无需润滑)



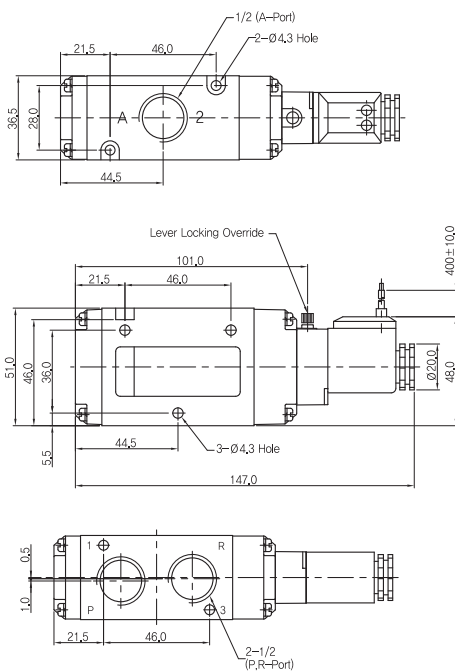
#### How To Order (型号表示方法)

TVP 742 - 3 DZ - 04 A - S

Voltage 电压	Connection 接电方式	Function 阀形式	Manual Override 手动操作
3 AC 110V	G Grommet(直接出线式)	A Single Acting(N.C)(单电控常闭型)	Nil(空) Push Button (standard)(按钮(标准))
4 AC 220V	GZ Grommet&LED(直接出线式带指示灯)	B Single Acting(N.O)(单电控常开型)	S Locking Type(锁定型)
5 DC 24V	D Din Type Terminal(插座式)	D Double Acting(双电控)	
6 DC 12V	DZ Din Type Terminal(插座式)/LED&Varistor(带指示灯和过压抑制器)		

#### Dimensions(mm)(外形尺寸图(毫米))

TVP742-□ G-04A/B-S



TVP742-□ G-04D

