



标准气缸(符合ISO15552标准)

Standard Cylinder

DNC(Ø32~Ø125) Series

Common Specification (共同规格)

Bore(缸径)(mm)	Ø32	Ø40	Ø50	Ø63	Ø80	Ø100	Ø125
Fluid(流体)	Clean Air(洁净空气)						
Action(动作形式)	Double Acting(双动)						
Proof Press.(保证耐压力)	1.5MPa						
Max. Press.(最高使用压力)	1.0MPa						
Min. Press.(最低使用压力)	0.1MPa						
Amb.Temp.(环境及流体温度)	-20~+80°C						
Piston Speed(活塞速度)	30~800mm/s						
Cushion(缓冲)	Air Cushion(气缓冲)(可选)						
*Lubrication(润滑)	Not Necessary(不需要)						
Stroke Tolerance(行程公差)	0~250 ^{+1.0} ₀		251~1000 ^{+1.4} ₀		1001~1500 ^{+1.8} ₀		
Pipe Size(接管口径)Rc(PT)	1/8"	1/4"	3/8"		1/2"		

* Use Tubine Oil 1st-Grade ISOVG32, If Necessary(如需要润滑请用透平1号油ISOVG32)



How To Order (型号表示方法)

Please refer to the stroke table. 请参考行程表		Nil(空)	Standard Type (标准型)	Y	Y Knuckle (Y型肘接头)	I	I Knuckle (I型肘接头)	Nil(空白)	Basic Type (基本型)	L	Foot (脚座型)	F	Front Flange (杆侧法兰)	G	Rear Flange (后法兰)	C	Single Clevis (单U型钩)	D	Double Clevis (双U型钩)	E	Double Clevis/ Brake (双U钩型接座)	R	Front and Back Trunnion Type (前后轴耳型)	T	Center Trunnion (中央轴耳)	Nil(空)	2 (个)	S	1 (个)	3	3 (个)		
Stroke 行程	Accessory 附件	Fixed Type 安装型式			No. of Auto Switch 磁性开关数量																												
DNC 63 - 50 - A J Y - S2 - L - M9B - S																																	
Cylinder Bore 缸径	Cushion 缓冲	*Gaiter Material 伸缩保护套材质			Special Order 特制规格			*Auto Switch 磁性开关																									
32, 40, 50, 63, 80, 100, 125	Nil(空) Rubble Cushion (橡胶缓冲) A Air Cushion (气缓冲)	Nil(空)	None(无)	J	Nylon Tarpaulin(尼龙防水帆布)(60°C)	K	Neoprene (氯丁橡胶外层)(110°C)	Nil(空)	Standard Type (标准型)	S2	Double Piston Rod (双活塞杆)	K2	Lengthen Out Screw (加长外螺杆)	K3	Front In Screw Thread (前端内螺纹)	K5	Out Standard Screw Thread (非标准螺纹)	K8	Lengthen Piston Rod (加长活塞杆)	Nil(空)	None (无磁性开关)	M9B	Reed Switch(带有接点磁性开关)	M9NP	Contactless Switch(无接点磁性开关)	* Auto Switch (磁性开关) 引线长度表示记号: 无记号-1m (标准) L-3m Z-5m							

Stroke (行程)

(mm)

Bore (缸径)	Standard Stroke (标准行程)	Buffer Stroke (缓冲行程)	Max. Stroke (最大行程)
Ø32	25, 50, 75, 80, 100, 125, 150, 160, 175, 200, 250, 300, 350, 400, 450, 500	27	1000
Ø40	25, 50, 75, 80, 100, 125, 150, 160, 175, 200, 250, 300, 350, 400, 450, 500, 600, 700, 800	27	1200
Ø50, Ø63	25, 50, 75, 80, 100, 125, 150, 160, 175, 200, 250, 300, 350, 400, 450, 500, 600, 700, 800, 900, 1000	30	1500
Ø80, Ø100		36	
Ø125		40	

* Contact us for other stroke. (非标行程请与营业员联系)

标准气缸(符合ISO15552标准)

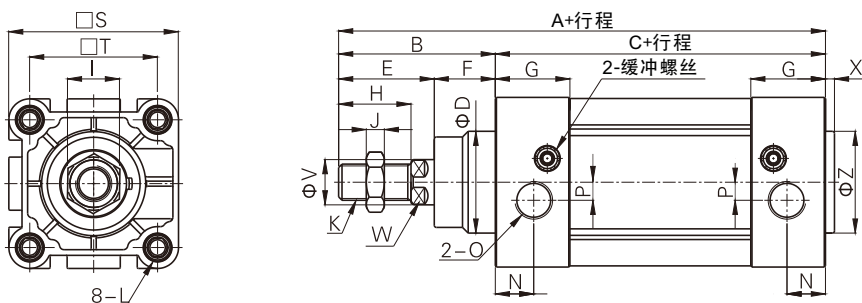
Standard Cylinder

DNC(Ø32~Ø125) Series

1

Dimensions(mm)(外形尺寸图(毫米))

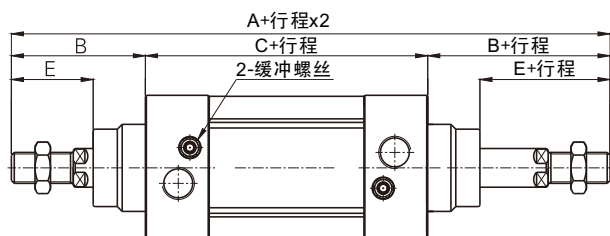
Basic Type(基本型)



Bore (缸径)	A	B	C	D	E	F	G	H	I	J	K	L	N	O	P	S	T	V	W	X	Z
Ø32	142	48	94	30	29	19	27.5	22	17	6	M10x1.25	M6	13.5	PT1/8	6	46.5	32.5	12	10	3	13.5
Ø40	159	54	105	35	33	21	32	24	17	7	M12x1.25	M6	17.5	PT1/4	6	54	38	16	13	3.5	17.5
Ø50	175	69	106	40	42	27	31	32	23	8	M16x1.5	M8	14	PT1/4	8	64	46.5	20	17	3.5	14
Ø63	190	69	121	45	42	27	33	32	23	8	M16x1.5	M8	17	PT3/8	8	75	56.5	20	17	4	17
Ø80	214	86	128	45	53	33	33	40	26	10	M20x1.5	M10	16.5	PT3/8	8	93	72	25	22	4	16.5
Ø100	229	91	138	55	55	36	37	40	26	10	M20x1.5	M10	19.5	PT1/2	10	110	89	25	22	4	19.5
Ø125	279	119	160	60	74	45	46	54	41	13.5	M27x2	M12	23	PT1/2	11	134	110	32	27	4	23

Dimensions(mm)(外形尺寸图(毫米))

Double Piston Rod Type(双侧活塞杆型) DNC-S2

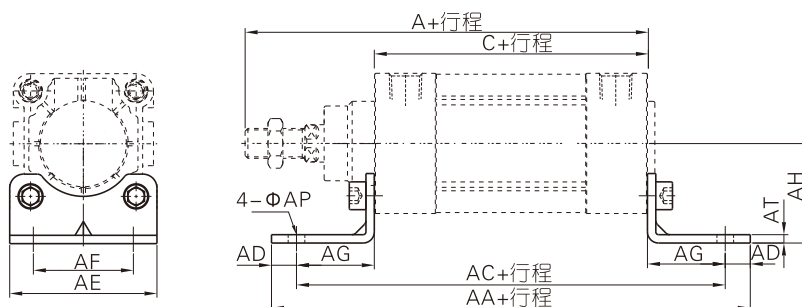


Bore (缸径)	A	B	C	E
Ø32	190	48	94	29
Ø40	213	54	105	33
Ø50	244	69	106	42
Ø63	259	69	121	42
Ø80	300	86	128	53
Ø100	320	91	138	55
Ø125	398	119	160	74

*For dimensions not shown in these figures, refer to the DNC(Basic) type.
(未标注尺寸请参考基本型)

Dimensions(mm)(外形尺寸图(毫米))

Foot Type(脚座型) DNC-L

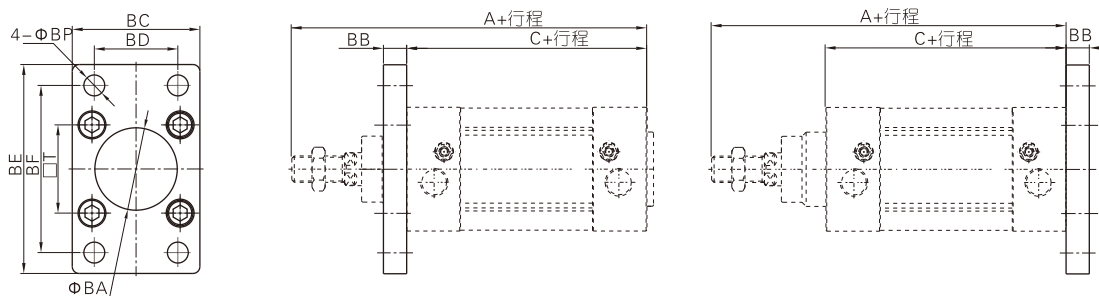


Bore (缸径)	A	C	AA	AC	AD	AE	AF	AG	AH	AP	AT
Ø32	142	94	158	142	8	47	32	24	32	7	3
Ø40	159	105	179	161	9	53	36	28	36	9	3
Ø50	175	106	190	170	10	65	45	32	45	9	3
Ø63	190	121	209	185	12	75	50	32	50	9	3
Ø80	214	128	248	210	19	95	63	41	63	12.5	4
Ø100	229	138	266	228	19	115	75	45	71	14.5	4
Ø125	279	160	290	250	20	140	90	45	90	16.5	8

Dimensions(mm)(外形尺寸图(毫米))

Front Flange Type(杆侧法兰型) DNC-F

Rear Flange Type(后法兰型) DNC-G



Bore (缸径)	A	C	BA	BB	BC	BD	BE	BF	BP	T
Ø32	142	94	30.5	10	47	32	80	64	7	32.5
Ø40	159	105	35.5	10	53	36	90	72	9	38
Ø50	175	106	40.5	12	65	45	108	90	9	46.5
Ø63	190	121	45.5	12	75	50	118	100	9	56.5
Ø80	214	128	45.5	16	95	63	150	126	12.5	72
Ø100	229	138	55.5	16	115	75	176	150	14.5	89
Ø125	279	160	60.5	20	139	90	218	180	16.5	110

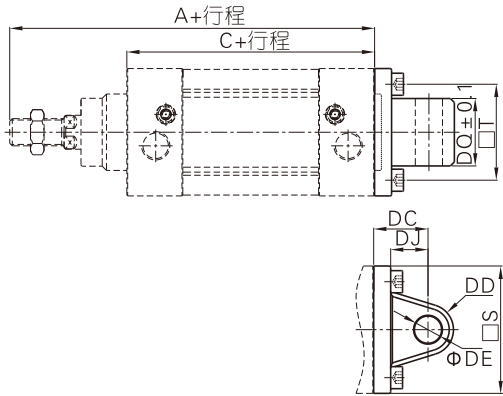
标准气缸(符合ISO15552标准)

Standard Cylinder

DNC(Ø32~Ø125) Series

Dimensions(mm)(外形尺寸图(毫米))

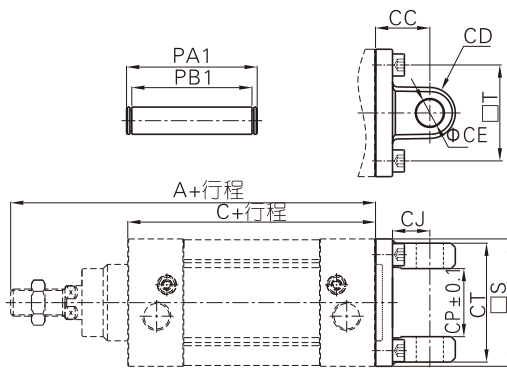
Single Clevis Type(单U钩型) DNC-C



Bore(缸径)	A	C	S	T	DC	DD	DE	DJ	DQ
Ø32	142	94	46.5	32.5	22	10.5	10	13	25.8
Ø40	159	105	54	38	25	12	12	16	27.8
Ø50	175	106	64	46.5	27	12	12	17	31.7
Ø63	190	121	75	56.5	32	15	16	22	39.7
Ø80	214	128	93	72	36	15.5	16	22	49.7
Ø100	229	138	110	89	41	20	20	27	59.7
Ø125	279	160	134	110	50	24	25	33	69.7

Dimensions(mm)(外形尺寸图(毫米))

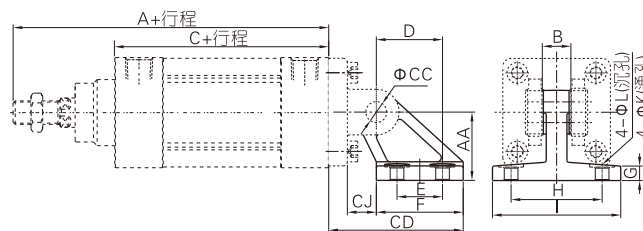
Double Clevis Type(双U钩型) DNC-D



Bore(缸径)	A	C	CC	CD	CE	CJ	CP	CT	PA1	PB1	S	T
Ø32	142	94	22	10.5	10	13	26	45	51	45.5	46.5	32.5
Ø40	159	105	25	12	12	16	28	52	59	52.5	54	38
Ø50	175	106	27	12	12	17	32	60	67	60.5	64	46.5
Ø63	190	121	32	15	16	22	40	70	77	70.5	75	56.5
Ø80	214	128	36	15.5	16	22	50	90	97	90.5	93	72
Ø100	229	138	41	20	20	27	60	110	119	110.5	110	89
Ø125	279	160	50	24	25	33	70	130	139	130.5	134	110

Dimensions(mm)(外形尺寸图(毫米))

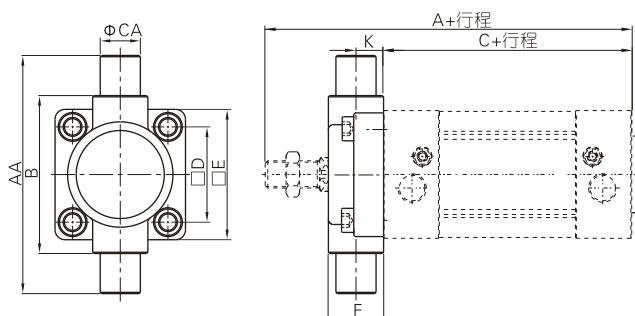
Double Clevis Brake Type(双U钩型接座) DNC-E



Bore(缸径)	A	AA	B	C	CC	CD	CJ	D	E	F	G	H	I	K	L
Ø32	142	32	26	94	10	50	10	21	18	31	8	38	51	6.6	-
Ø40	159	36	28	105	12	56	12	24	22	35	10	41	54	6.6	-
Ø50	175	45	32	106	12	68	13	33	30	45	12	50	65	9	-
Ø63	190	50	40	121	16	77	17	37	35	50	12	52	67	9	-
Ø80	214	63	50	128	16	93	19	47	40	60	14	66	86	11	18
Ø100	229	71	60	138	20	106	22	55	50	70	15	76	96	11	18
Ø125	279	90	70	160	25	135	26	70	60	90	20	94	124	14	20

Dimensions(mm)(外形尺寸图(毫米))

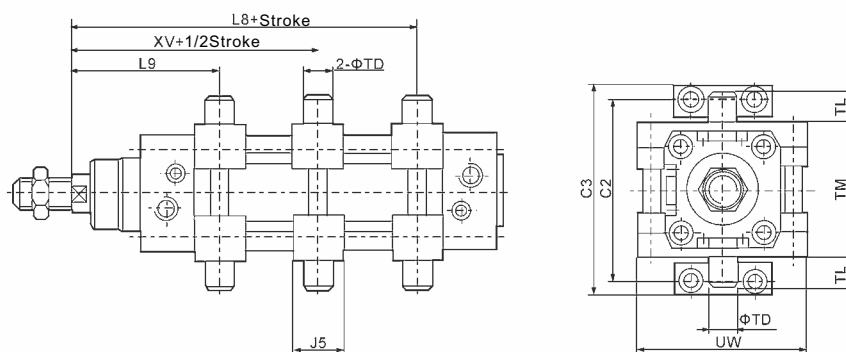
Front and Back Trunnion Type (前后轴耳型) DNC-R



Bore (缸径)	A	C	AA	B	CA	D	E	F	K
Ø32	142	94	74	50	12	32.5	46	19	10
Ø40	159	105	95	63	16	38	52	21	10
Ø50	175	106	107	75	16	46.5	64	26	12
Ø63	190	121	130	90	20	56.5	74	28	12
Ø80	214	128	150	110	20	72	94	31	16
Ø100	229	138	182	132	25	89	114	35	16
Ø125	279	160	210	160	25	110	139	43	20

Dimensions(mm)(外形尺寸图(毫米))

Middle Trunnion Type (中央轴耳型) DNC-T



Bore (缸径)	C2	C3	J5	L8	L9	TD _{e9/H7}	TL	TM	UW	XV
Ø32	71	86	30	79.9	66.1	12	12	50	65	73
Ø40	87	105	32	89.4	75.6	16	16	63	75	82.5
Ø50	99	117	34	94.4	83.6	16	16	75	95	90
Ø63	116	136	41	101.9	93.1	20	20	90	105	97.5
Ø80	136	156	44	118.1	103.9	20	20	110	130	110
Ø100	164	189	48	126.2	113.8	25	25	132	145	120
Ø125	192	217	50	155.3	134.7	25	25	160	175	145

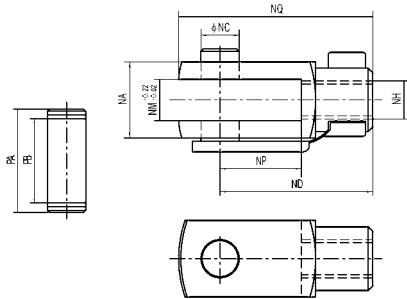
标准气缸(符合ISO15552标准)

Standard Cylinder

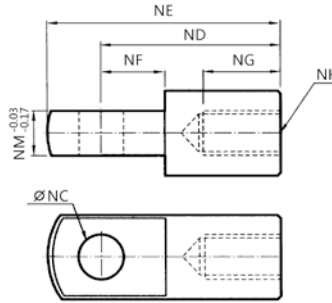
DNC(Ø32~Ø125) Series

Dimensions(mm)(外形尺寸图(毫米))

Double Knuckle Joint (Y型双肘接头)

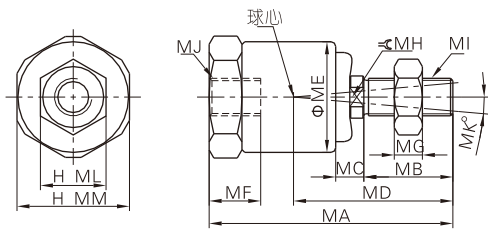


Single Knuckle Joint (I型单肘接头)

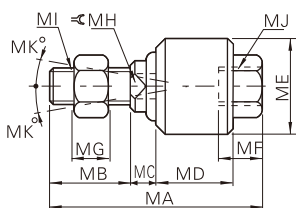


Symbol/Bore (符号/内径)	NA	NC	ND	NE	NG	NH	NM	NP	NQ	PA	PB
Ø32	19	10	40	52	20	M10x1.25	10	20	52	26.2	20
Ø40	25.4	12	48	67	20	M12x1.25	12	24	62	32.8	26.5
Ø50	32	16	64	89	23	M16x1.5	16	32	83	39.3	33
Ø63	32	16	64	89	23	M16x1.5	16	32	83	39.3	33
Ø80	44.4	20	80	112	30	M20x1.5	20	40	105	53.3	45
Ø100	44.4	20	80	112	30	M20x1.5	20	40	105	53.3	45
Ø125	55	30	110	155	56	M27x2.0	30	54	148	64	55.6
Ø160	70	35	144	201	72	M36x2.0	35	72	191	80	70.6
Ø200	70	35	144	201	72	M36x2.0	35	72	191	80	70.6

Float Joint (浮动接头)



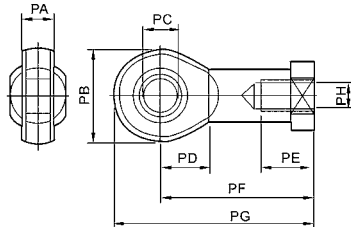
Model (型号)	MA	MB	MC	MD	ME	MF	MG	MH	MI	ML	MM	角度 补偿	径向 补偿
FJ03	23.5	7.5	3	15	11.8	5.5	2.4	4	M3x0.5	5.5	5.5	±5°	0.5
FJ04	26	9.5	3	17	11.8	6	3	4	M4x0.75	7	7	±5°	0.5
FJ05	34.5	13.5	3.5	22.8	13.8	8	4	6	M5x0.8	8	8	±5°	0.5
FJ06	34.5	13.5	3.5	22.8	13.8	8	4	6	M6x1.0	10	10	±5°	0.5



Model (型号)	MA	MB	MC	MD	ME	MF	MG	MH	MI	MI	MK
FJ08	51	20	6	17	24	10.5	6	8	M8x1.25	M8x1.25	13
FJ10	58	22	7	21	26	11	6	10	M10x1.25	M10x1.25	12
FJ12	58	22	8	21	28	11.5	7	12	M12x1.25	M12x1.25	12
FJ14	70	22.5	8.5	28	34.5	16	8	15	M14x1.5	M14x1.5	12
FJ16	90	27	10	41	44.5	19	8	17	M16x1.5	M16x1.5	7
FJ18	92	27	10	41	44.5	21	11	18	M18x1.5	M18x1.5	7
FJ20	102	29	13	46	53	22	10	22	M20x1.5	M20x1.5	10

Dimensions(mm)(外形尺寸图(毫米))

Fish-eye Joint (鱼眼接头)



Model (型号)	PA	PB	PC	PD	PE	PF	PG	PH
FU10	14	28	10	15	20	43	57	M10x1.25
FU12	16	32	12	17	22	50	66	M12x1.25
FU16	21	42	16	22	28	64	85	M16x1.5
FU16	21	42	16	22	28	64	85	M16x1.5
FU20	25	50	20	26	33	77	102	M20x1.5
FU20	25	50	20	26	33	77	102	M20x1.5
FU27	37	70	30	36	51	110	145	M27x2.0
FU36	43	80	35	41	56	125	165	M36x2.0
FU36	43	50	35	41	56	125	165	M36x2.0