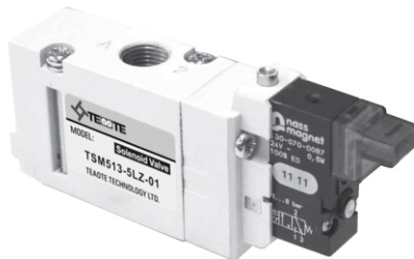
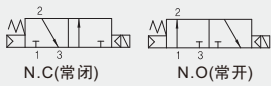


三通先导式电磁阀

3 Way Pilot Type Solenoid Valve

TSM500S Series

图形示例



Common Specification (共同规格)

Fluid(流体)	Compressed Air, Inert gas(压缩空气, 惰性气体)
Eff. Sectional Area (有效截面积)	16.0mm ²
Operating Pressure(使用压力)	0.15~0.7Mpa
Max. Cycles(最大工作频率)	5c/s
Response Time(5bar)(反应时间)	25ms or Less
Lubrication(润滑)	Not Required(无需润滑)
Manual Override(手动操作)	Push Button (Standard)(按钮式)(标准), Lever Lock (锁定式)
Power Consumption (电力消耗)	Holding-DC(持续) : 0.65W(24V:27.0mA/12V:54.0mA)
Allowable Voltage(容许电压变动范围)	Rated Voltage(额定电压)±10%
Ambient & Fluid Temp.(环境及介质温度)	5°C~60°C
Coil Insulation(绝缘等级)	Class F or Equivalent(F级或相同级别)

*Please Use Turbine Oil 1st-grade ISO VG32#, If Required.
若需要润滑油请使用透平1号油ISOVG32

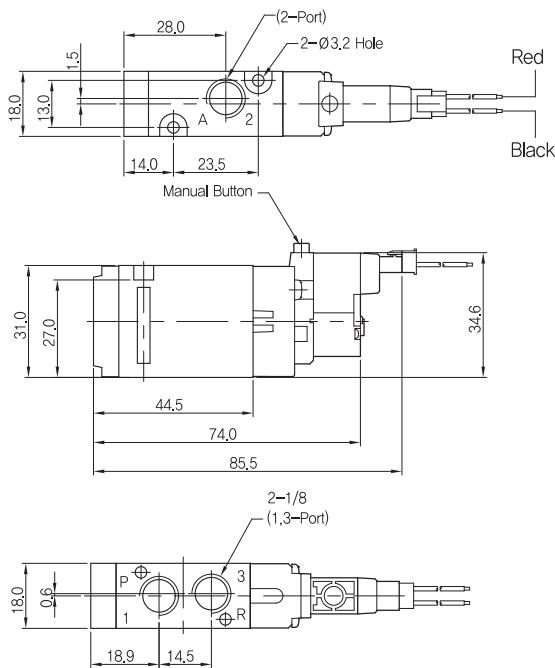
How To Order (型号表示方法)

TSM5 1 3 S - 5 LZ - 01 - S

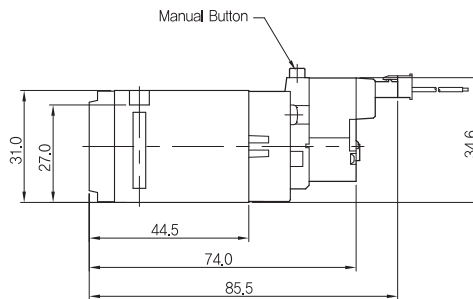
Solenoid 电磁线圈	Voltage 电压	Connection 接电方式	Port Size 接管口径	Manual Override 手动操作
1 Normally Closed(常闭)	5 DC24V	LZ L Type Terminal(L型插座式)	01 1/8	Nil(空) Push Button (Standard)(按钮式)(标准)
2 Normally Open(常开)	6 DC12V	MZ M Type Terminal(90°)(M型插座式)		S Lever Lock (锁定式)
3 Double(双电)				

Dimensions(mm)(外形尺寸图(毫米))

TSM513S-□LZ



TSM523S-□LZ



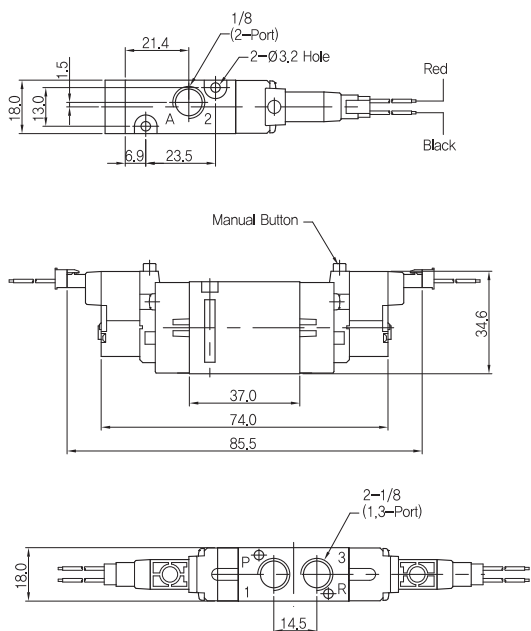
三通先导式电磁阀

3 Way Pilot Type Solenoid Valve

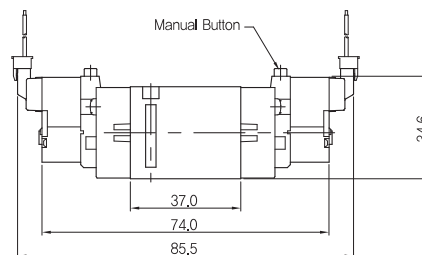
TSM500S Series

Dimensions(mm)(外形尺寸图(毫米))

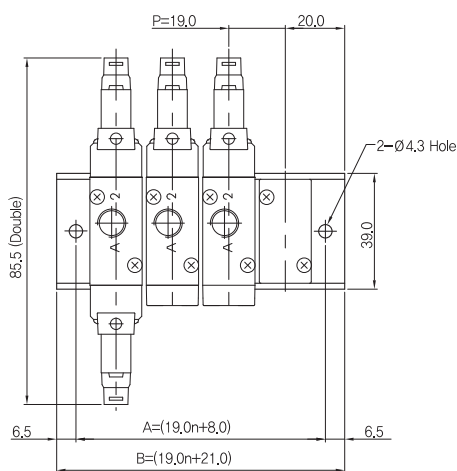
TSM533S-□LZ



TSM533S-□MZ



Manifold (汇流板)

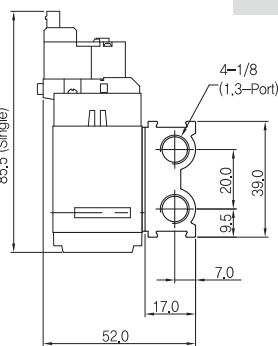


How To Order (型号表示方法)

TSS3M 5 - 20 - 04 1

Series 系列	5 TSM500
--------------	----------

No. of Station 位置数目	02 2 Valves
	03 3 Valves
	12 12 Valves



Blanking Plate



Manifold Gasket

A,B : Dimensions(尺寸)

n=Station(位数)

Item	Station	2	3	4	5	6	7	8	9	10	11	12
B		46.0	65.0	84.0	103.0	122.0	141.0	160.0	179.0	198.0	217.0	236.0
A		59.0	78.0	97.0	116.0	135.0	154.0	173.0	192.0	211.0	230.0	249.0