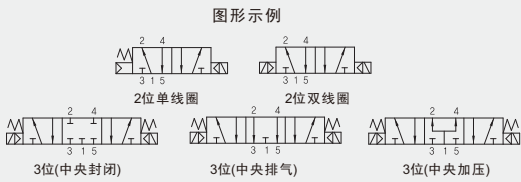


# 三通/五通先导式电磁阀 3 Way /5 Way Pilot Type Solenoid Valve

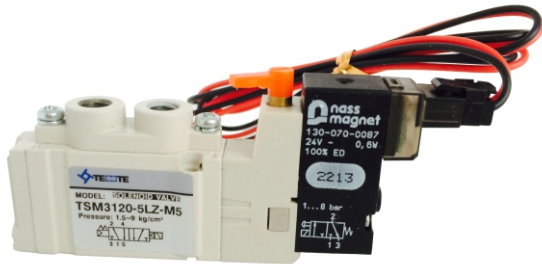
## TSM300/TSM3000 Series



### Common Specification (共同规格)

Function(功能)	3 Port 2 Position(两位三通) 5 Port 2 Position(两位五通)	5 Port 3 Position(三位五通)
Fluid(流体)	Compressed Air, Inert gas(压缩空气, 惰性气体)	
Eff. Sectional Area (有效截面积)	2.3mm <sup>2</sup>	1.8mm <sup>2</sup>
Operating Pressure(使用压力)	0.15~0.7Mpa	0.2~0.7Mpa
Max. Cycles(最大工作频率)	10c/s	8c/s
Response Time(5bar)(反应时间)	20ms or Less	30ms or Less
Lubrication(润滑)	Not Required(无需润滑)	
Manual Override(手动操作)	Push Button (Standard)(按钮式)(标准), Lever Lock (锁定式)	
Power Consumption (电力消耗)	Holding-DC(持续) : 0.65W(24V:27.0mA/12V:54.0mA)	
Allowable Voltage(容许电压变动范围)	Rated Voltage(额定电压)±10%	
Ambient & Fluid Temp.(环境及介质温度)	5°C~60°C	
Coil Insulation(绝缘等级)	Class F or Equivalent(F级或相同级别)	

\*Please Use Tubine Oil 1st-grade ISO VG32#, If Required.  
若需要润滑油请使用透平1号油ISOVG32



- 1 Normally Closed(常闭)
- 2 Normally Open(常开)
- 3 Double(双电)

Solenoid  
电磁线圈

### How To Order (型号表示方法)

3 Way Point  
3通型

TSM3 1 3\* - 5 LZ - M5 - S

5 Way Point  
5通型

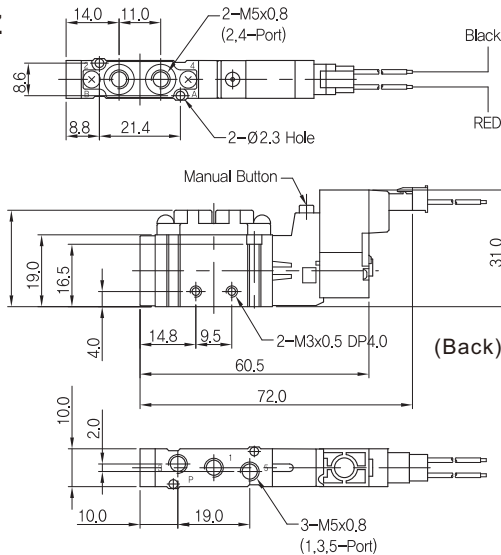
TSM3 1 20 D - 5 LZ - M5 - S

Solenoid 电磁线圈	Body Type 阀安装	Voltage 电压	Connection 接电方式	Port Size 接管口径	Manual Override 手动操作
1 Single(单线圈)	Nil(空) Body Ported(直接安装型)	5 DC24V	LZ L Type Terminal(L型插座式)	M5 M5x0.8	Nil(空) Push Button (Standard)(按钮式)(标准)
2 Double(双线圈)	* D Sub-Plate Type(底板安装型)	6 DC12V	MZ M Type Terminal(90°)(M型插座式)	C4 Ø4接头	S Lever Lock (锁定式)

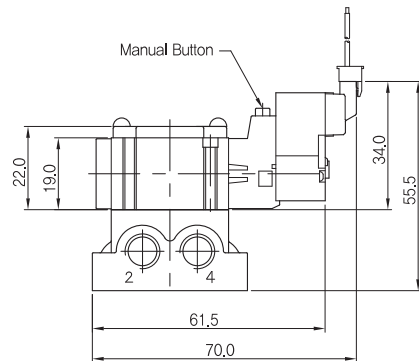
\*底板安装型无接管口径选项  
\*TSM300系列与TSM3000系列电磁阀尺寸与集装板规格相同

### Dimensions(mm)(外形尺寸图(毫米))

TSM3120-□LZ



TSM3120D-□MZ



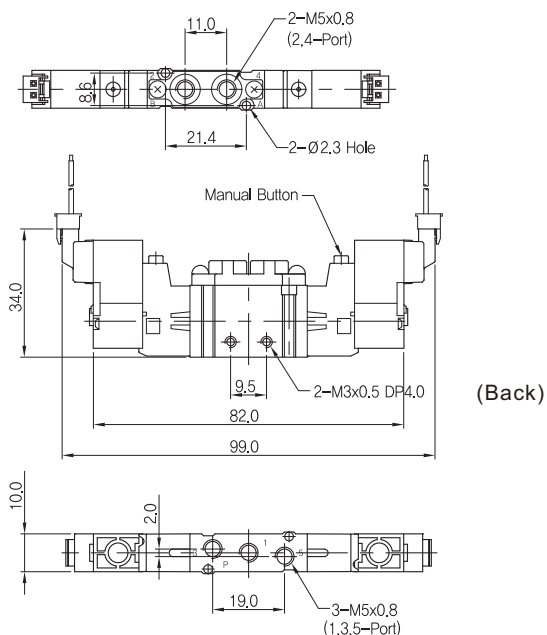
# 三通/五通先导式电磁阀

## 3 Way /5 Way Pilot Type Solenoid Valve

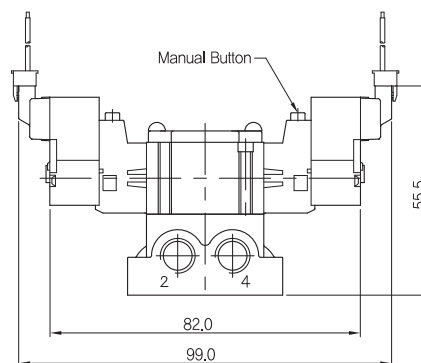
### TSM300/TSM3000 Series

#### Dimensions(mm)(外形尺寸图(毫米))

TSM3220-□LZ

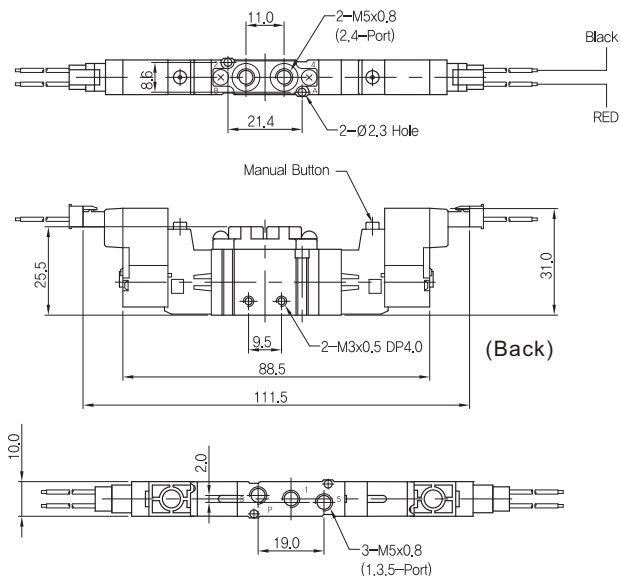


TSM3220D-□MZ

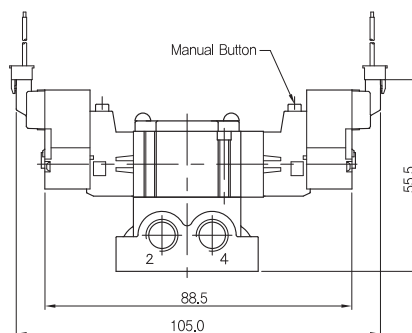


#### Dimensions(mm)(外形尺寸图(毫米))

TSM3320-□LZ



TSM3320D-□MZ



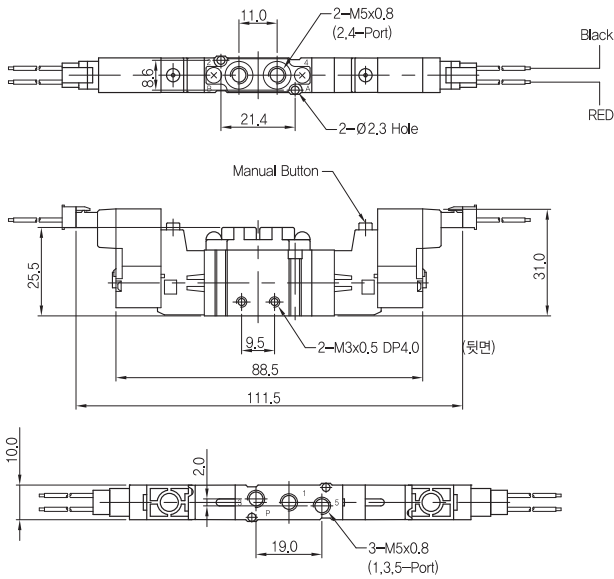
# 三通/五通先导式电磁阀

## 3 Way /5 Way Pilot Type Solenoid Valve

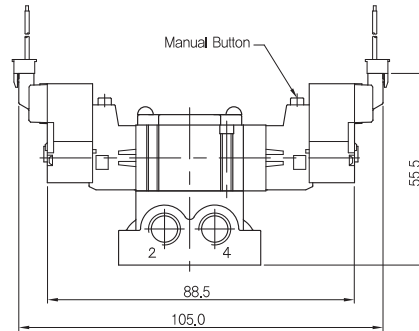
### TSM300/TSM3000 Series

#### Dimensions(mm)(外形尺寸图(毫米))

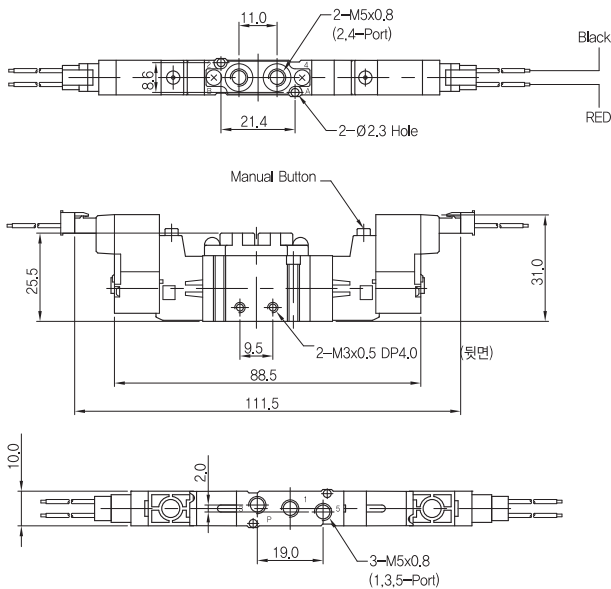
**TSM3420-□LZ**



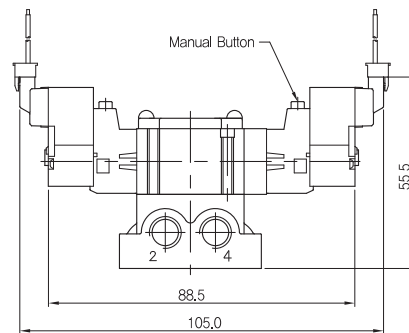
**TSM3420D-□MZ**



**TSM3520-□LZ**

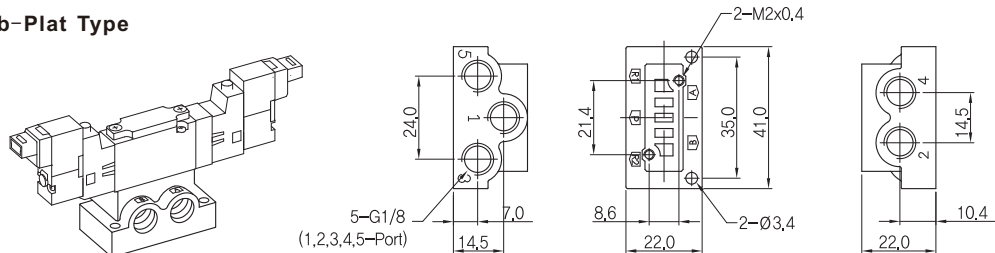


**TSM3520D-□MZ**



#### Dimensions(mm)(外形尺寸图(毫米))

**TSM3000D Series Sub-Plat Type**  
(TSM3000D系列用底座)



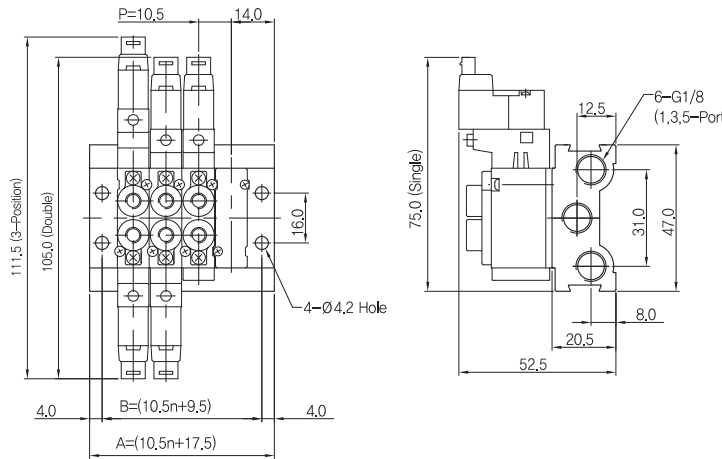
# 三通/五通先导式电磁阀

## 3 Way /5 Way Pilot Type Solenoid Valve

### TSM300/TSM3000 Series

#### Manifold (汇流板)

#### Body Ported (直接安装型)



#### How To Order (型号表示方法)

TSS5M 3 - 20 - 04 1

Series 系列	
5	TSM3000

No. of Station 位置数目	
02	2 Valves
03	3 Valves
14	14 Valves

Blanking Plate



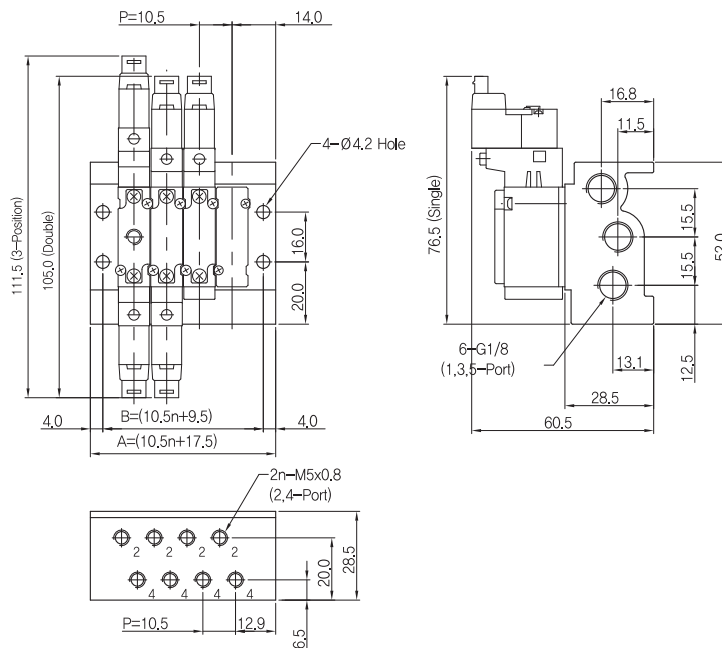
A,B : Dimensions(尺寸)

n=Station(位数)

Item	Station	2	3	4	5	6	7	8	9	10	11	12	13	14
B		30.5	41.0	51.0	62.0	72.5	83.0	93.5	104.0	114.5	125.0	135.5	146.0	156.5
A		38.5	49.0	59.5	70.0	80.5	91.0	101.5	112.0	122.5	133.0	143.5	154.0	164.5

#### Manifold (汇流板)

#### Sub-Plate Type (底板安装型)



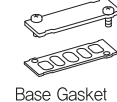
#### How To Order (型号表示方法)

TSS5M 3 - 43 - 04 1

Series 系列	
3	TSM3000D

No. of Station 位置数目	
02	2 Valves
03	3 Valves
14	14 Valves

Blanking Plate



A,B : Dimensions(尺寸)

n=Station(位数)

Item	Station	2	3	4	5	6	7	8	9	10	11	12	13	14
B		30.5	41.0	51.0	62.0	72.5	83.0	93.5	104.0	114.5	125.0	135.5	146.0	156.5
A		38.5	49.0	59.5	70.0	80.5	91.0	101.5	112.0	122.5	133.0	143.5	154.0	164.5