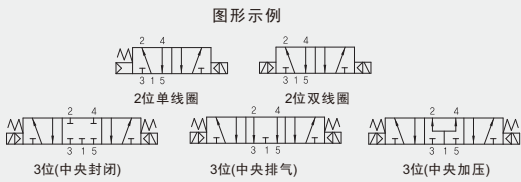


# 三通/五通先导式电磁阀 3 Way /5 Way Pilot Type Solenoid Valve TSM500/TSM5000 Series



- |   |                     |
|---|---------------------|
| 1 | Normally Closed(常闭) |
| 2 | Normally Open(常开)   |
| 3 | Double(双电)          |

Solenoid  
电磁线圈

## How To Order (型号表示方法)

3 Way Point  
3通型

TSM3 1 3\* - 5 LZ - 01 - S

5 Way Point  
5通型

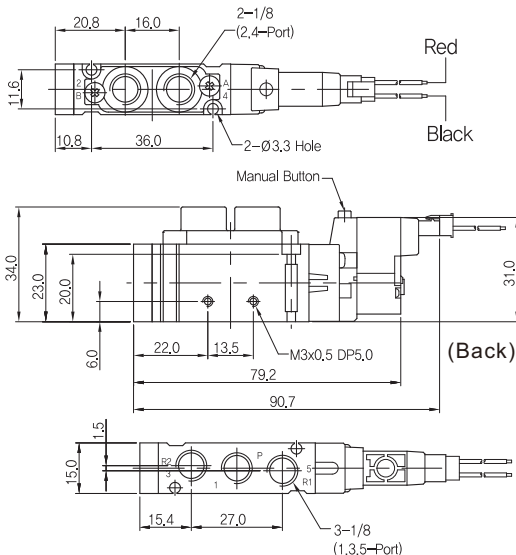
TSM5 1 20 D - 5 LZ - 01 - S

Solenoid 电磁线圈	Body Type 阀安装	Voltage 电压	Connection 接电方式	Port Size 接管口径	Manual Override 手动操作
1 Single(单线圈)	Nil(空) Body Ported(直接安装型)	5 DC24V	LZ L Type Terminal(L型插座)	01 1/8	Nil(空) Push Button (Standard)(按钮式)(标准)
2 Double(双线圈)	*D Sub-Plate Type(底板安装型)	6 DC12V	MZ M Type Terminal(90°)(M型插座)	C6 Ø6接头	S Lever Lock (锁定式)

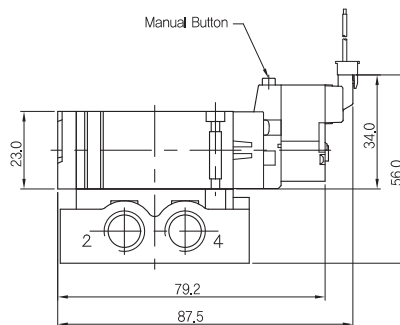
\*底板安装型无接管口径选项  
\*TSM500系列与TSM5000系列电磁阀尺寸与集装板规格相同

## Dimensions(mm)(外形尺寸图(毫米))

TSM5120-□LZ



TSM5120D-□MZ



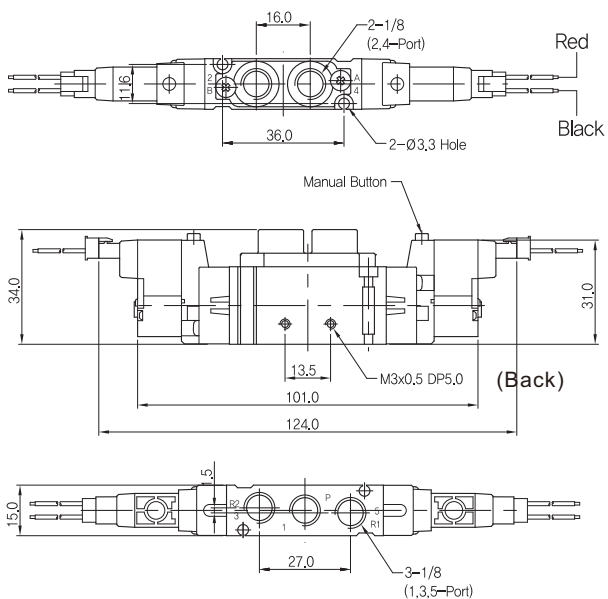
# 三通/五通先导式电磁阀

## 3 Way /5 Way Pilot Type Solenoid Valve

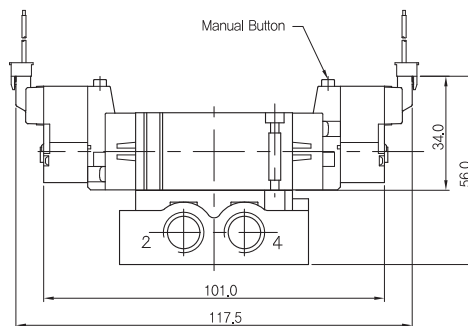
### TSM500/TSM5000 Series

#### Dimensions(mm)(外形尺寸图(毫米))

**TSM5220-□LZ**

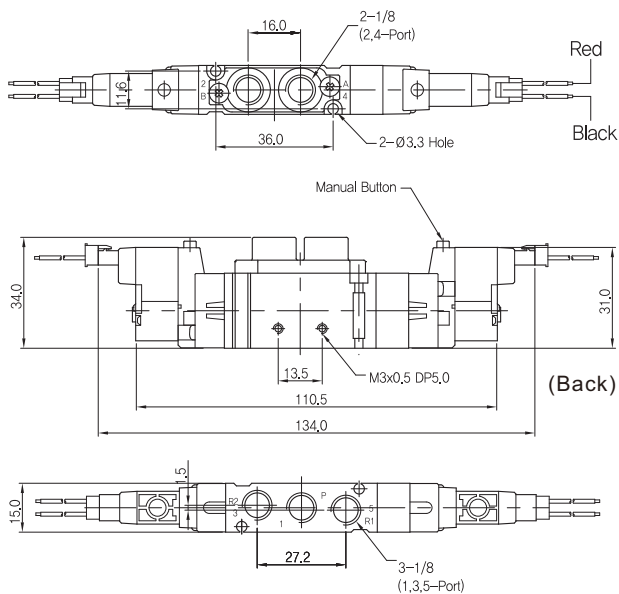


**TSM5220D-□MZ**

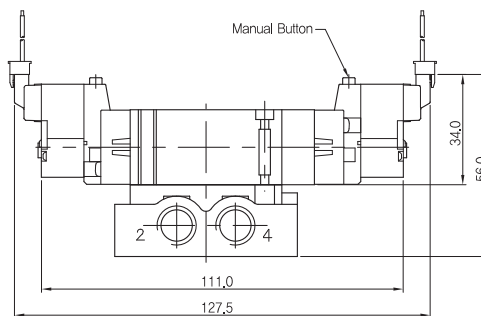


#### Dimensions(mm)(外形尺寸图(毫米))

**TSM5320-□LZ**



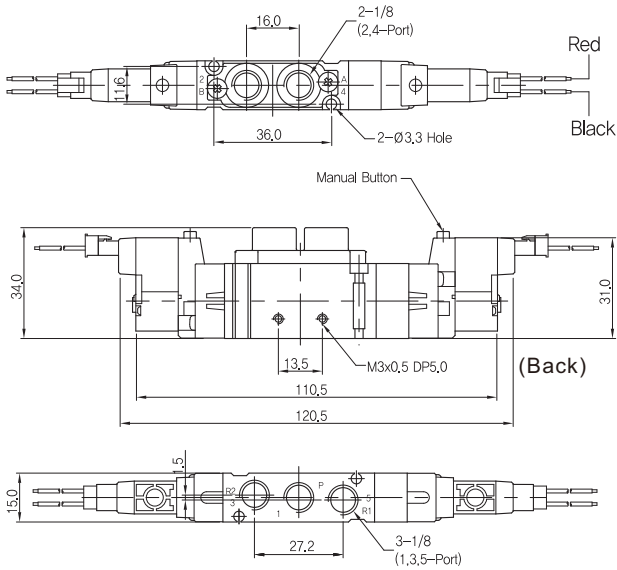
**TSM5320D-□MZ**



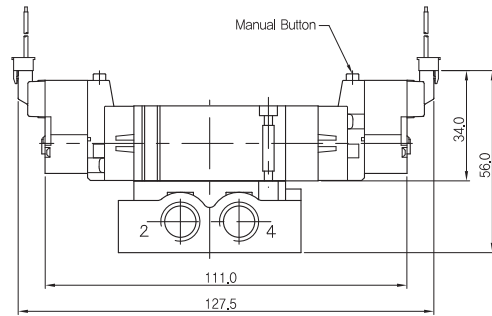
# 三通/五通先导式电磁阀 3 Way /5 Way Pilot Type Solenoid Valve TSM500/TSM5000 Series

## Dimensions(mm)(外形尺寸图(毫米))

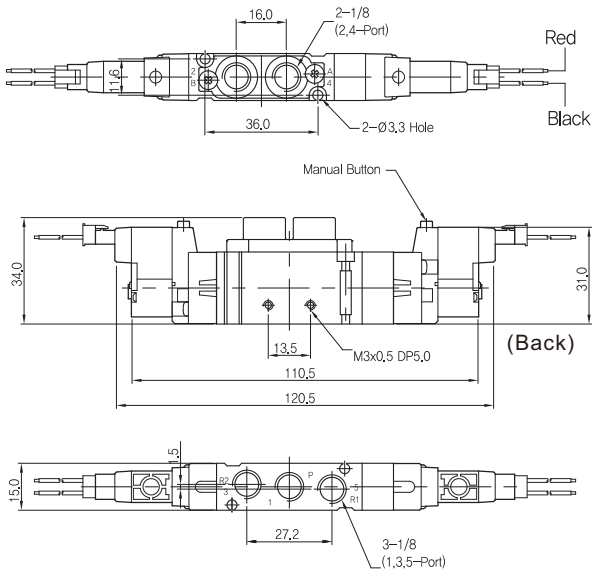
**TSM5420-□LZ**



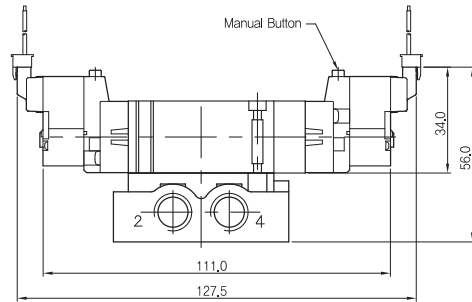
**TSM5420D-□MZ**



**TSM5520-□LZ**

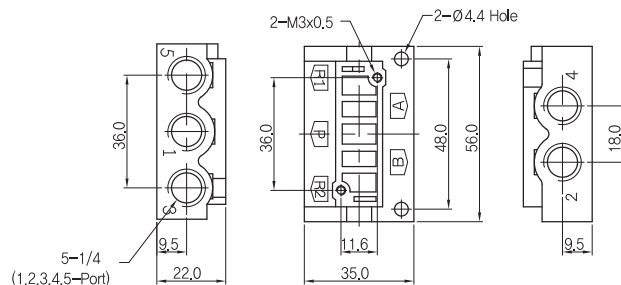
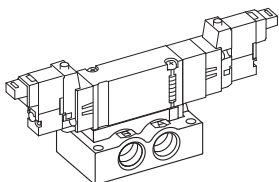


**TSM5520D-□MZ**



## Dimensions(mm)(外形尺寸图(毫米))

**TSM5000D Series Sub-Plat Type  
(TSM5000D系列用底座)**



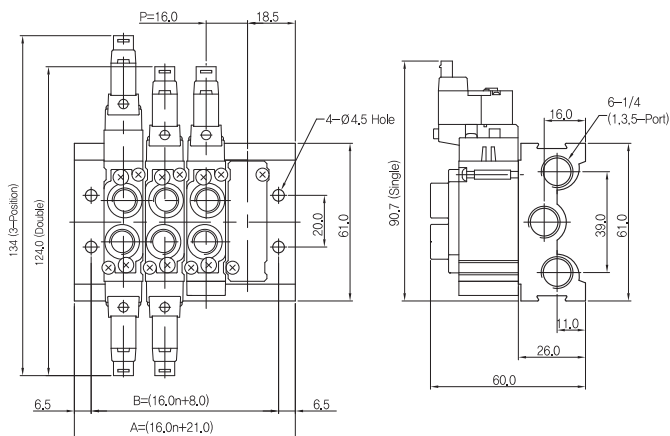
# 五通先导式电磁阀

## 5 Way Pilot Type Solenoid Valve

### TSM5000 Series

#### Manifold (汇流板)

##### Body Ported (直接安装型)



A,B : Dimensions(尺寸)

Item	Station	2	3	4	5	6	7	8	9	10	11	12	13	14
B		40.0	56.0	72.0	88.0	104.0	120.0	136.0	152.0	168.0	184.0	200.0	216.0	232.0
A		53.0	69.0	85.0	101.0	117.0	133.0	149.0	165.0	181.0	197.0	213.0	229.0	245.0

n=Station(位数)

#### How To Order (型号表示方法)

TSS5M 5 - 20 - 04 1

Series 系列	
5	TSM5000

No. of Station 位置数目	
02	2 Valves
03	3 Valves
14	14 Valves

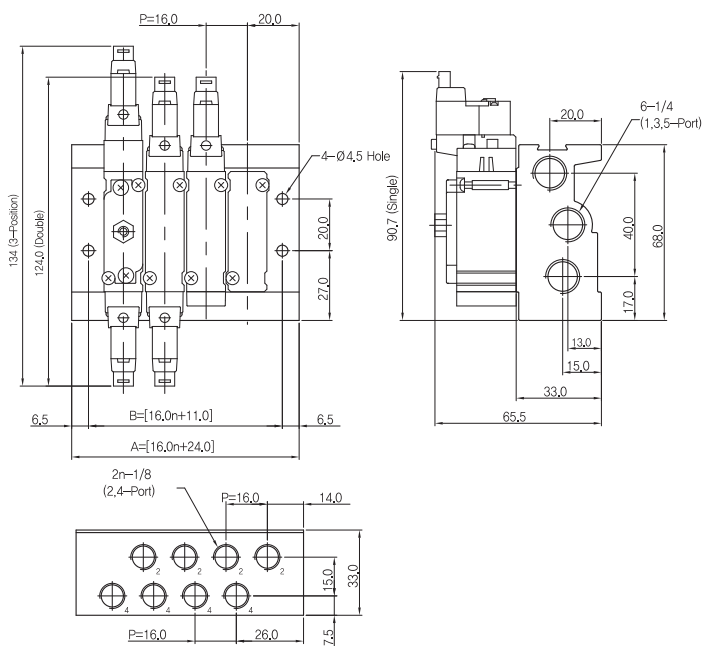
Blanking Plate



Manifold Gasket

#### Manifold (汇流板)

##### Sub-Plate Type (底板安装型)



A,B : Dimensions(尺寸)

Item	Station	2	3	4	5	6	7	8	9	10	11	12	13	14
B		43.0	59.0	75.0	91.0	107.0	123.0	139.0	155.0	171.0	187.0	203.0	219.0	235.0
A		56.0	72.0	88.0	104.0	120.0	136.0	152.0	168.0	184.0	200.0	216.0	232.0	248.0

n=Station(位数)

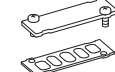
#### How To Order (型号表示方法)

TSS5M 5 - 43 - 04 1

Series 系列	
5	TSM5000D

No. of Station 位置数目	
02	2 Valves
03	3 Valves
14	14 Valves

Blanking Plate



Base Gasket