



- 可以用一个单一的压缩空气控制阀来操作，每一条真空线路都是一个单独的多级真空发生器并且不会影响其它线路的运行。

备注：ABX5最多可达至16层(12~16层用两个消声器)  
ABX10最多可达至12层(6~12层可用两个消声器)

### Common Specification (共同规格)

Max.Vacuum Level(最大真空度)	-92kPa
Max.Vacuum Flow Rate(最大真空流量)	32l/m
Air Supply Pressure(供气压力)	4-6bar Max.7bar
Air Supply Type(供气类别)	Dry compressed air (干燥的压缩空气)

### Features (产品特点)

- This vacuum pump uses individual pumps to make up the complete unit,each pump is in itself a multistage ejector unit. Each individual pump can be stacked together this creating a modular manifold based system.
- It can be operated using just one control valve whilst retaining individual vacuum lines separate to one another,therefore if any leakage or surface deformation occurs and one pad loses its vacuum, it does not effect the vacuum level in the other pads. Pumps can be stacked up from 2-16 unit depending upon requirements.The pumps can have seal material options of Viton® & EPDM for corrosive and acidic applications.

Remark: ABX5-the most 16 stacks (can use 2 silencers between 12-16 stacks)  
ABX10-the most 12 stacks (can use 2 silencers between 6-12 stacks)

### How To Order (型号表示方法)

① Model(多级发生器型号)      ② Vacuum stack(真空发生器安装板数)

ABX5 x 5 - 4 V

③ Vacuum port,inner dia. of tube (真空口接管内径)      ④ Sealing(密封件)

ABX5	2、3、4、5、6、7、8、9、10
ABX10	11、12、13、14、15、16

4-Φ4	No mark(无记号) Standard (NBR) (标准(丁腈橡胶))
	V VITON (氟橡胶)
	E EPDM (三元乙丙橡胶)

### Vacuum Flow(l/min)at Different Vacuum Levels(-kPa)(不同真空度(-kPa)的真空流量(l/min))

Model(型号)	Vacuum Flow(l/min)at Different Vacuum Levels(-kPa)(不同真空度(-kPa)的真空流量(l/min))									
	0	10	20	30	40	50	60	70	80	90
ABX5x1	25	14	10	9	7.5	6	4	2.8	1.5	0.44
ABX10x1	32	21	18	16	14	11	9.5	5.5	2.5	1.1

### Evacuation Time(s/l)to Teach Different Vacuum Levels(-kPa)(不同真空度(-kPa)的抽气时间(s/l))

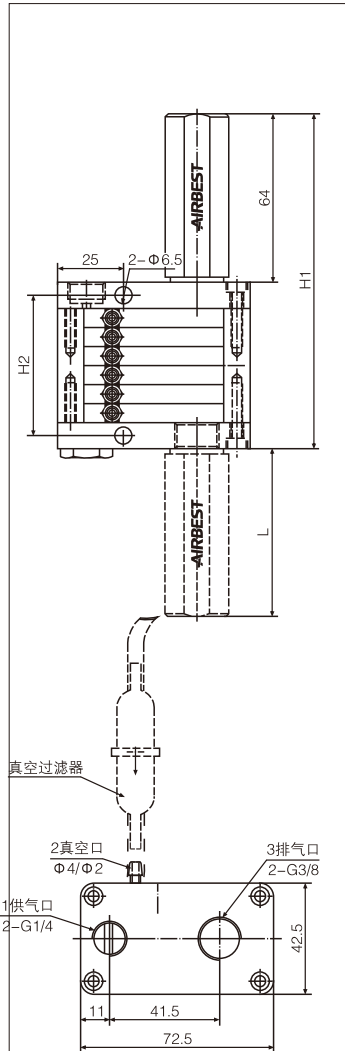
Model(型号)	Evacuation Time(s/l)to Teach Different Vacuum Levels(-kPa)(不同真空度(-kPa)的抽气时间(s/l))									
	10	20	30	40	50	60	70	80	90	
ABX5x1	0.21	0.81	1.52	2.35	3.48	4.85	6.57	10.5	19.27	
ABX10x1	0.14	0.40	0.78	1.22	1.77	2.4	3.3	4.95	9.62	

# 组合式真空发生器 Combined Type Vacuum Pump

**AIRBEST** Series

## ABX Series

Dimensions(mm)(外形尺寸图(毫米))



ABM5(10) ABX5(10)	H1	H2
4 Layer	113	39
5 Layer	121	47
6 Layer	128	54
7 Layer	135	61
8 Layer	142	68
9 Layer	150	76
10 Layer	157	83
11 Layer	164	90
12 Layer	172	98
13 Layer	179	105
14 Layer	186	112
15 Layer	194	120
16 Layer	201	127

Evacuation Time(s/l)to Teach Different Vacuum Levels(-kPa)(不同真空度(-kPa)的抽气时间(s/l))

Model (型号)	Max.vacuum level (-kPa) (最大真空度)	Max.vacuum flow (l/min) (最大真空流量)	Air consumption (l/min) (空气消耗量)	Min tube inner Φ (within 2m)(最小软管内径(2m以内))		
				Air supply(供气)	Vacuum(真空)	Exhaust(排气)
ABX5 × 2	92	23 × 2	43-49	>2	>5	3/8 × 1
ABX5 × 3		23 × 3	65-73	>2	>8	3/8 × 1
ABX5 × 4		23 × 4	85-96	>4	>10	3/8 × 1
ABX5 × 5		23 × 5	106-121	>4	>12	3/8 × 1
ABX5 × 6		23 × 6	130-144	>4	>12	3/8 × 1
ABX5 × 7		23 × 7	151-167	>4	>12	3/8 × 1
ABX5 × 8		23 × 8	173-193	>6	>12	3/8 × 1
ABX5 × 9		23 × 9	195-217	>6	>10	3/8 × 1
ABX5 × 10		23 × 10	215-241	>6	>8	3/8 × 1
ABX5 × 11		23 × 11	238-265	>6	>8	3/8 × 1
ABX5 × 12		23 × 12	260-289	>6	>10	3/8 × 2
ABX5 × 13		23 × 13	281-313	>6	>12	3/8 × 2
ABX5 × 14		23 × 14	303-335	>4	>12	3/8 × 2
ABX5 × 15		23 × 15	325-361	>4	>12	3/8 × 2
ABX5 × 16		23 × 16	346-385	>4	>12	3/8 × 2
ABX10 × 2		92	32 × 2	87-96	>4	>4
ABX10 × 3	32 × 3		130-145	>4	>4	3/8 × 1
ABX10 × 4	32 × 4		173-193	>6	>4	3/8 × 1
ABX10 × 5	32 × 5		215-241	>6	>4	3/8 × 1
ABX10 × 6	32 × 6		260-288	>6	>4	3/8 × 2
ABX10 × 7	32 × 7		303-337	>6	>4	3/8 × 2
ABX10 × 8	32 × 8		346-385	>8	>4	3/8 × 2
ABX10 × 9	32 × 9		389-433	>10	>4	3/8 × 2
ABX10 × 10	32 × 10		433-481	>10	>4	3/8 × 2
ABX10 × 11	32 × 11		476-529	>10	>4	3/8 × 2
ABX10 × 12	32 × 12		519-578	>10	>4	3/8 × 2

Dimensions(mm)(外形尺寸图(毫米))

