

三通提升式/万能通口气控阀 Air Operated Valve(3 Port Poppet/Universal Port)

TVTA307 Series



Common Specification (共同规格)

Fluid(流体)	Air, Vacuum, Inert gas (空气、真空、惰性气体)
Port Size(接管口径)	Rc(PT) 1/8, 1/4
Effective Sectional Area(有效截面积)	3.2mm ² (CV=0.18)
Operating Pressure(使用压力)	Air(空气):0~0.9MPa Vacuum(真空): 10~760Torr
Ambient Temp. (环境温度)	-10°C~50°C
Fluid Temp. (周围温度)	5°C~80°C
Pilot Pressure(先导压力)	2~10kgf/cm ² (0.2~1MPa)
Pilot Port Size(先导接管口径)	1/8
Lubrication(润滑)	Not Required(不需要)

Feature (特征)

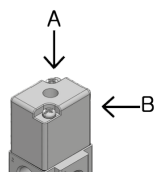
- A single valve with 6 valve functions.(Universal porting type)
- With the structure of a valve preventing fixation and resistant to dust, it operates perfectly.
- Possible to use in vacuum.

How To Order (型号表示方法)



Type 阀种类	Air Control Direction 空气控制方向	Function 阀芯机能	Port Size 接管口径	Option 选项	Number of valves on manifold block 集装阀数量	Exhaust Port 排气方式(集装型)
T Direct attach type(直接安装型)	A Vertical(垂直)	Nil(空) Air(空气)	01 1/8"	Nil(空) None(无支架)	02 2 pcs	2 Common Exhaust Port(集中排气)
O Manifold block attached type(集装型)	B Horizontal(水平)	V Vacuum(真空)	02 1/4"	B Bracket(带支架)	03 3 pcs	3 Individual Exhaust Port(单独排气)
					n n pcs(n≤20)	

*Please refer to the table1. (请参考表格1).



※ B port can be accessed if the plug in B port is inserted into A port.

(Table1)

Function(阀形式)		Symbol (图形符号)	Function(阀形式)		Symbol (图形符号)	
Nil(无符号)	Air(空气)		V	Vacuum+Air(真空+空气) 1Port - Vacuum 3Port - Air (3通-空气)		
V	Vacuum(真空)			N.C (常闭)	Air+Vacuum(空气+真空) 1Port - Air 3Port - Vacuum (3通-真空)	
	N.O (常开)					

Applications(应用)

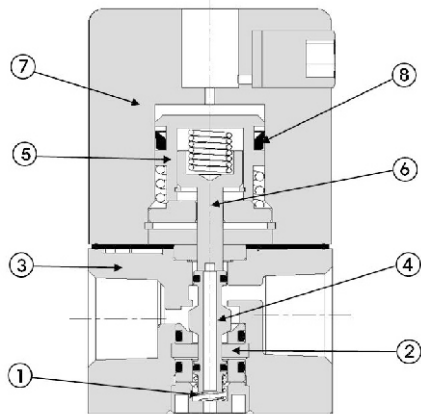
Type	3 Port Valve (N.C)	3 Port Valve (N.O)	Divider Valve	
Solenoid OFF				
Solenoid ON				
Type	2 Port Valve (N.C)	2 Port Valve (N.O)	Selector Valve	
Solenoid OFF				
Solenoid ON				

三通提升式/万能通口气控阀

Air Operated Valve(3 Port Poppet/Universal Port)

TVTA307 Series

Structure(结构)

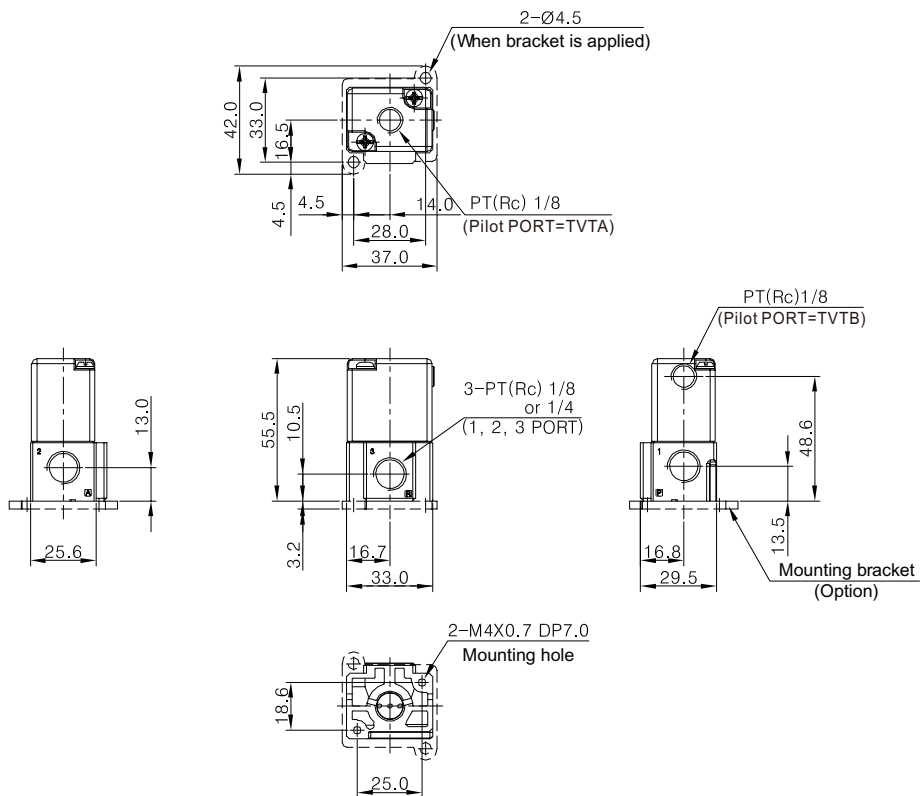


Part no.	Parts	Material
1	Spool Spring	SUS
2	Seat	Metal
3	Body	AL D/C
4	Spool Ass'y	AL & Others
5	Piston	Metal
6	Piston Rod	Metal
7	Housing	Metal
8	Piston Packing	Metal

Dimensions(mm)(外形尺寸图(毫米))

Direct Attach Type(直接安装型)

TVTA307/TVTB307



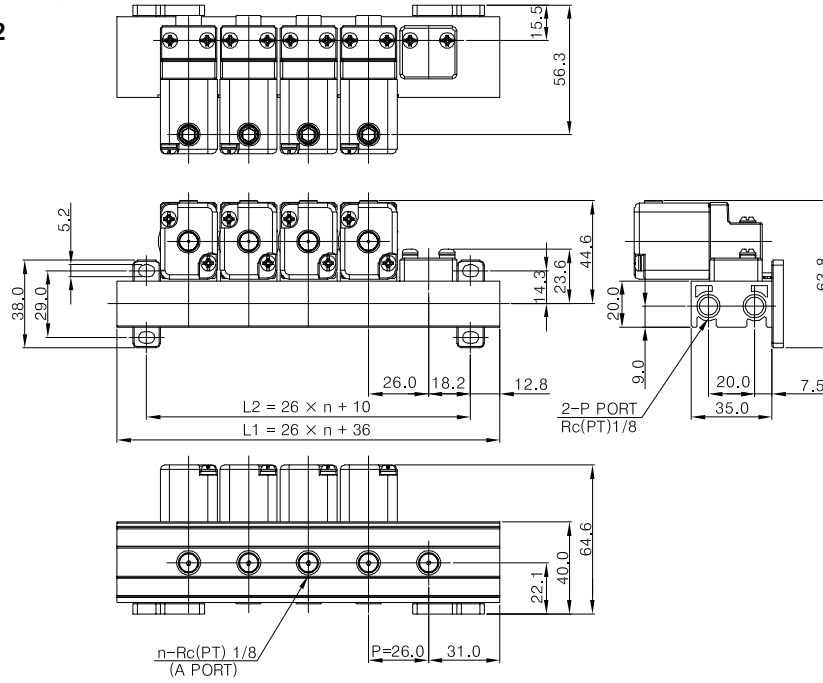
三通提升式/万能通口气控阀 Air Operated Valve(3 Port Poppet/Universal Port)

TVTA307 Series

Dimensions(mm)(外形尺寸图(毫米))

Common Exhaust Port(集中排气)

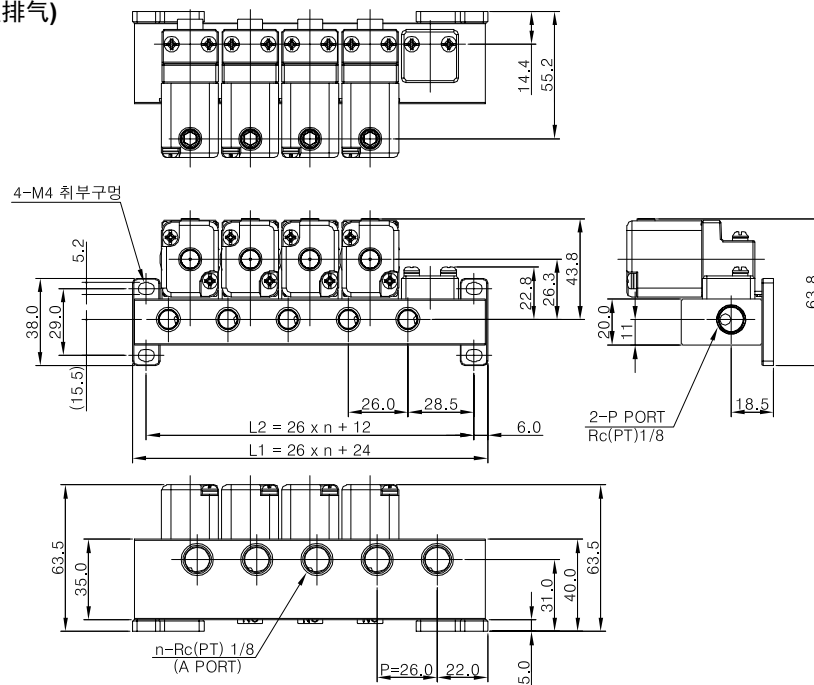
TVOA307-□□-052



Station	2	3	4	5	6	7	...	19	20
L1	88	114	140	166	192	218	...	530	556
L2	62	88	114	140	166	192	...	504	530

Individual Exhaust Port(单独排气)

TVOA307-□□-053



Station	2	3	4	5	6	7	...	19	20
L1	76	102	128	154	180	206	...	518	544
L2	64	90	116	142	168	194	...	506	532