



Features(产品特点)

- 1.5 bellow vacuum pad
- The vacuum pad can be horizontal adjustment, It is suitable for transferring objects with height difference
- It is particularly good for use on curved surface and for separating thin sheets of materials.
- 波纹吸盘1.5折。
- 可水平调整, 适用于有高度变化物体的搬运。
- 适用有些曲面的物体和需正确分离的薄膜。

How To Order(型号表示方法)

SB12 N F – 18F EH – KE1820–A16 –BH–G1/8

① ② ③ ④ ⑤ ⑥ ⑦

⑤ Vacuum efficiency Valve(双流式控制阀)

EH	Vacuum Efficiency Valve(双流式控制阀) (SB17,20,30,40,50)
-	No(无)

① Model(型号)

SB5	Φ5	SB15	Φ15	SB50	Φ50
SB6X	Φ6	SB17	Φ17	SB75	Φ75
SB8	Φ8	SB20	Φ20	SB110	Φ110
SB10	Φ10	SB30	Φ30	SB150	Φ150
SB12	Φ12	SB40	Φ40		

② Material(Shore Hardness)(材质(肖氏硬度))

N	NBR(丁腈橡胶)(55°)
S	Silicone(硅胶)(50°)
WS	White Silicone(白硅胶)(50°)
CS	Electric Conduction (Special Materials)导电(特殊材料)(50°)

③ Filter

F	With Filter(包含过滤芯)(PE) (SB30,40,30,50,75,110)
-	无

④ Connection thread(连接螺纹)

18-F	G1/8 Female Thread(内螺旋) (SB17,SB20,SB30,SB40,SB50,SB75)
5 × 18F	5 × G1/8 Female Thread(内螺旋) (SB30,SB40,SB50)
15-FL	G1/8 Female Thread(内螺旋)(SB30,SB40)
14-F	G1/4 Female Thread(内螺旋)(SB75)
38-F	G3/8 Female Thread(内螺旋)(SB75)
12-F	G1/2 Female Thread(内螺旋)(SB75,SB110,SB150)
M5-M	M5 Male Thread(外螺旋) (SB5,SB8,SB10,SB12,SB15)
M5/18MF	M5 Female Thread And G1/8 Male Thread(外螺旋)(SB17,SB20)
M5/18-MFL	M5 Female Thread And G1/8 Male Thread(外螺旋) (SB17,SB20)
5 × M5-F	5 × M5 Female Thread(外螺旋)(SB17,SB20)
18-M	G1/8 Male Thread(外螺旋) (SB30, SB40)
14-M	G1/4 Male Thread(外螺旋) (SB30, SB40,SB50)
38-M	G3/8 Male Thread(外螺旋) (SB50)

⑥ Springplunger(弹簧缓冲支杆)		⑦ Ball Joint(球状接头)	⑥ Springplunger(弹簧缓冲支杆)		⑦ Ball Joint(球状接头)	
Model(型号)	Buffer Stroke (缓冲行程)(mm)		Model(型号)	Buffer Stroke (缓冲行程)(mm)		
KE510-A12, KE510-Y-A12	10	-	KE1810-A16, KE1810-L-A14, KE1810-V-A16	10	BH-G1/8	
KE520-A12, KE20-Y-A12	20		KE1820-A16, KE1820-L-A14, KE1820-V-A16	20		
KI506-R-A8, KI506-B-A8, KI506-E-A8, KI506-S-A8	06		KE1830-A16, KE1830-L-A14, KE1830-V-A16	30		
KI510-R-A8, KI510-B-A8, KI510-E-A8, KI510-S-A8	10		KE1850-A16, KE1850-L-A14, KE1850-V-A16*	50		
KI525-R-A8, KI525-B-A8, KI525-E-A8, KI525-S-A8	25		KI1810-A16, KI1810-L-A16, KI1810-V-A16	10		
KI507-V-A10	7		KI1820, KI1820-L-A16, KI1820-V-A16*	20		
KI515-V-A10	15		KI1830-A16, KI1830-L-A16, KI1830-V-A16	30		
KI520-V-A10	20		KI1850-A16, KI1850-L-A16, KI1850-V-A16*	50		
KE1210-L-A20, KE1210-A20	10		BH-G1/2			
KE1220-L-A20, KE1220-A20	20					
KE1230-L-A20, KE1230-A20	30					
KE1250-L-A20, KE1250-A2050	50					
KI1210-L-A20, KI1210-A18, KI1210-A22	10					
KI1220-L-A20, KI1220-A18, KI1220-A22	20					
KI1230-L-A20, KI1230-A18, KI1230-A22	30					
KI1250-L-A20, KI1250-A18, KI1250-A22	50					

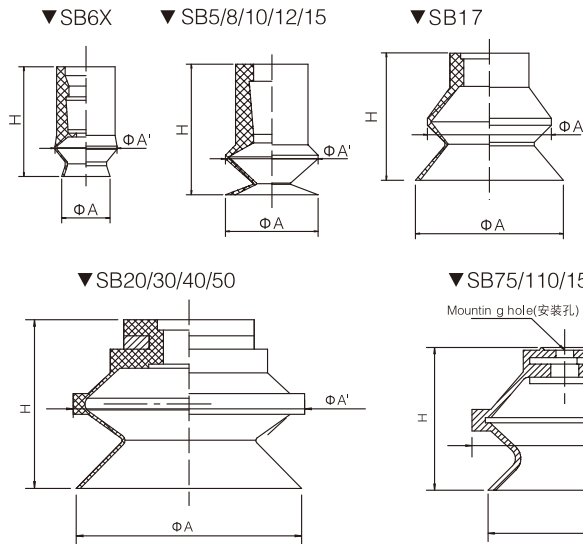
Applications(适用范围)

- Veneer sheet
- Steel plate
- Carton box
- Thin sheet
- Electronic components
- 木板
- 钢板
- 纸箱
- 薄板
- 电子零件

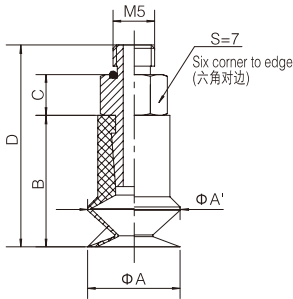
*Not available with ball joint.
*不能与球状接头共同使用

Recommended(Max.)Lifting Force(N)(不同真空度的最大送力) | Dimensions (mm)(外形尺寸(毫米))

Model (型号)	Volume (内部容量)cm ³	Vertical Lifting Force (垂直转送力)(N)		
		-20kPa	-60kPa	-90kPa
SB5	0.05	0.295	0.786	0.99
SB6X	0.09	0.5	1.076	1.375
SB8	0.15	0.786	1.7	2.45
SB10	0.48	1.7	3.5	5.1
SB12	0.59	2.2	4.2	7.2
SB15	1.1	3.3	6	8.9
SB17	1.5	3.93	7.82	9.7
SB20	2.7	5.8	10.6	15
SB30	10	13	25	28
SB40	15	22.5	42	50.2
SB50	32	34	65	83
SB75	110	74	166.4	226
SB110	310	136.5	343	460.5
SB150	650	295	686	883



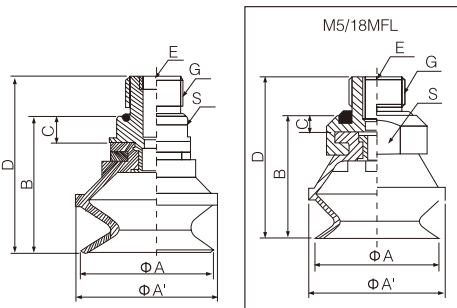
Model(型号)	ΦA	ΦA'	H
SB6X	7	9	13.5
SB5	5.8	6.2	9.2
SB8	8.8	9.6	11.9
SB10	11	12	16
SB12	12	14	16.5
SB15	15.5	17.5	19.5
SB17	18.5	16.6	15.6



Male Thread Connection(外螺纹连接)(mm)

Model(型号)	ΦA	ΦA'	B	C	D
SB5-M5	5.6	6.2	9.2	4	16.7
SB8-M5	8.8	9.6	11.9	4	19.4
SB10-M5	11	12	16	5	25
SB12-M5	12	14	16.5	5	25.5
SB15-M5	15.5	17.5	19.5	5	28.5

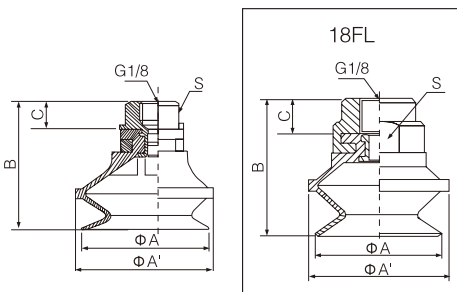
Model(型号)	ΦA	ΦA'	H	Mounting Hole(安装孔)
SB20	22	24	19	-
SB30	34	36	26	-
SB40	43	46	28	-
SB50	53	58	35	-
SB75	78	83	37	4-Φ6.5 Circle Diameter(圆周直径)Φ35
SB110	115	124	54	8-Φ6 Circle Diameter(圆周直径)Φ55
SB150	155	166	71	8-Φ6 Circle Diameter(圆周直径)Φ70.5



Male Thread Connection(外螺纹连接)(mm)

Model(型号)	ΦA	ΦA'	B	C	D	E	G	S
SB17-M5/18MF	18.5	16.6	17.1	1.5	23.1	M5	G1/8	S12
SB20-M5/18MF	22	24	20.5	1.5	26.5	M5	G1/8	S12
SB20-M5/18MFL*	22	24	22	3	29	M5	G1/8	S16
SB30-18M	34	36	31	5	38	-	G1/8	S17
SB30-14M	34	36	32	6	41	-	G1/4	S17
SB40-18M	43	46	33	5	40	-	G1/8	S17
SB40-14M	43	46	34	6	43	-	G1/4	S17
SB50-14M	53	58	41	6	50	-	G1/4	S24
SB50-38M	53	58	41	6	51	-	G3/8	S24

*only for S (Silicone) material
*仅适用于S(硅胶)材质

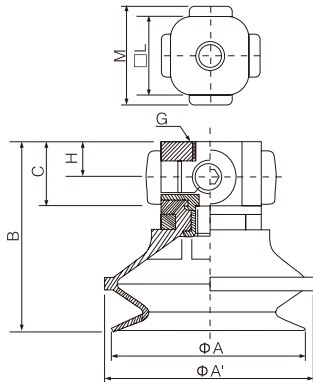


Female Thread Connection(内螺纹连接)(mm)

Model(型号)	ΦA	ΦA'	B	C	S
SB17-18F	18.5	16.6	23.6	8	S15
SB20-18F	22	24	27	8	S15
SB30-18F	34	36	34	8	S17
SB30-18FL*	34	36	35	9	S21
SB40-18F	43	46	36	8	S17
SB40-18FL*	43	46	37	9	S21
SB50-18F	53	58	44	9	S24

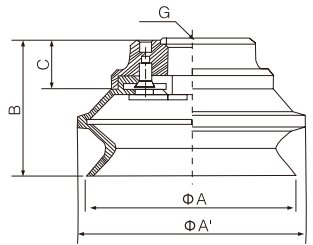
*only for S (Silicone) material
*仅适用于S(硅胶)材质

Dimensions (mm)(外形尺寸(毫米))



Female Thread Connection × 5(内螺纹连接)(mm)

Model(型号)	ΦA	ΦA'	B	C	G	H	□L	M
SB17-5 × M5F	18.5	16.6	24.6	9	5 × M5	5	15	22
SB20-5 × 5F	22	24	28	9	5 × M5	5	15	22
SB30-5 × 18F	34	36	34	18	5 × G1/8	10	22	30
SB40-5 × 18F	43	46	46	18	5 × G1/8	10	22	30
SB50-5 × 18F	53	58	53	18	5 × G1/8	10	28	36



Female Thread Connection × 5(内螺纹连接)(mm)

Model(型号)	ΦA	ΦA'	B	C	G
SB75-18F	78	83	50	18	G1/8
SB75-14F	78	83	50	18	G1/4
SB75-38F	78	83	50	18	G3/8
SB75-12F	78	83	50	18	G1/2
SB110-12F	115	124	63	15	G1/2
SB150-12F	155	166	78	14	G1/2