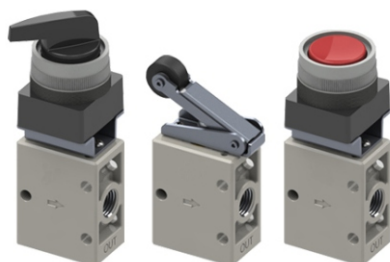


二通、三通机械阀

2、3 Port Mechanical Valve

KVM200 Series

K Series



Common Specification (共同规格)

Fluid(流体)	Compressed Air(压缩空气)
Port Size(接管口径)	Rc(PT) 1/4, G 1/4
Ambient Temperature(环境温度)	0°C~60°C
Operating Pressure(使用压力)	0~9.9kgf/cm ² (0~0.99MPa)
Effective Sectional Area (有效截面积)	19mm ² (CV=1.0)
Lubrication (润滑)	Not Required(无需润滑)

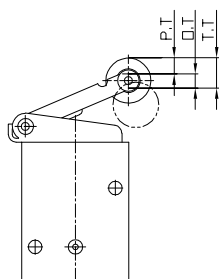
Model (型号)	2 Port(二通)	KVM 220-02-01(S)	KVM 220-02-02(S)	KVM 220-02-30 -33	KVM 220-02-34
Symbol (图形符号)					
Model (型号)	3 Port(三通)	KVM 230-02-01	KVM 230-02-02(S)	KVM 230-02-30 -33	KVM 230-02-34
Symbol (图形符号)					

How To Order (型号表示方法)

KVM G 2 2 0 - 01 - 30 - R

Port Type 螺纹种类	Number of Ports 通口数	Stem Type 阀杆	Type of Actuator 开关方式	Option 选项
Nil(空) Rc(PT)(标准) G G	2 2 Port(二通) 3 3 Port(三通)	0 Standard Type(标准)	00 Standard(标准) 01 Roller Lever(双向滚轮) 02 One-way Lever(单向滚轮) 30 Push Button(大头按钮) 33 Flat Push Button(平头按钮) 34 Selector(旋转选择)	S Hard Steel Roller(强化滚轮) R Red(红色按钮) G Green(绿色按钮)

Operating Point of Mechanical Valve(机械阀操作点)



P.T. : Working distance from the free position to the operating position of the actuator.
(从执行器的自由位置到操作位置的移动距离)

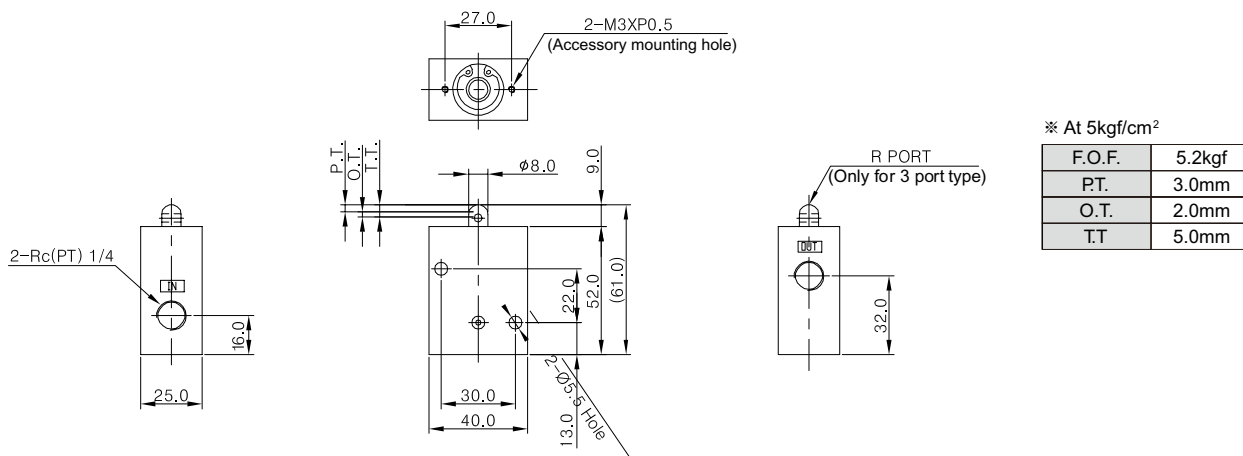
O.T. : Working distance from the operating position to the operating limit of the actuator.
(从执行器的操作位置到操作极限位置的移动距离)

T.T. : Working distance from the free position to the operating limit of the actuator.
(从执行器的自由位置到操作极限位置的移动距离)

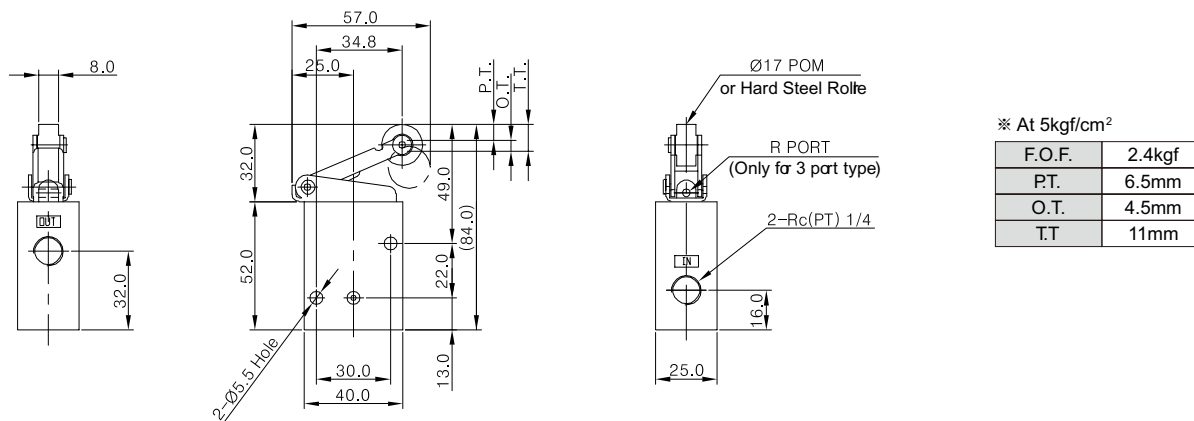
F.O.F. : Force required by actuator to move from the free position to the operating limit of the operating.
(执行器从自由位置移动到操作极限位置时需要的力度)

Dimensions(mm)(外形尺寸图(毫米))

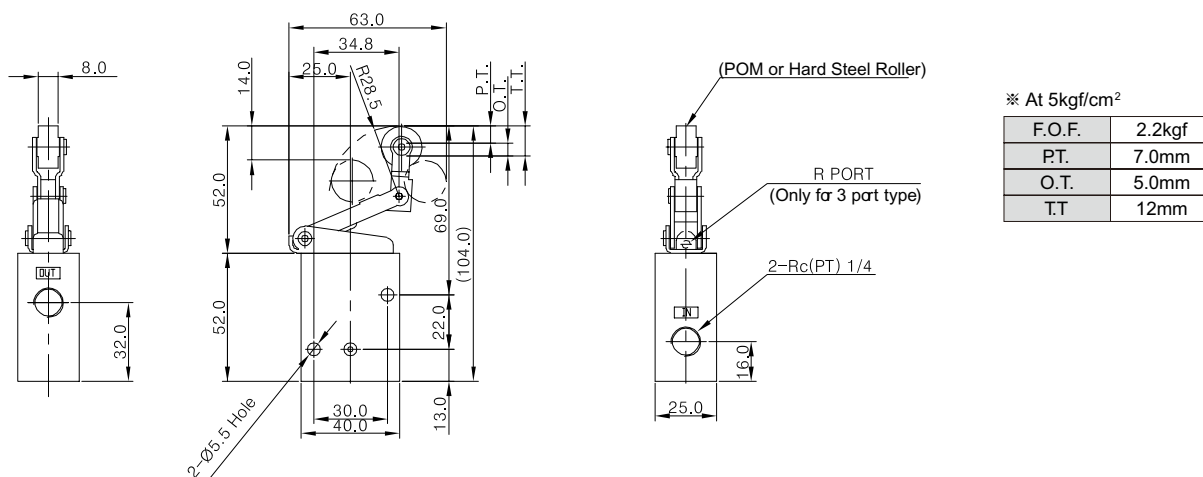
Standard(标准) KVM 220-02-00, KVM 230-02-00



Roller Lever(双向滚轮) KVM 220-02-01, KVM 220-02-01S, KVM 230-02-01, KVM 230-02-01S



One-way Lever(单向滚轮) KVM 220-02-02, KVM 220-02-02S, KVM 230-02-02, KVM 230-02-02S



二通、三通机械阀

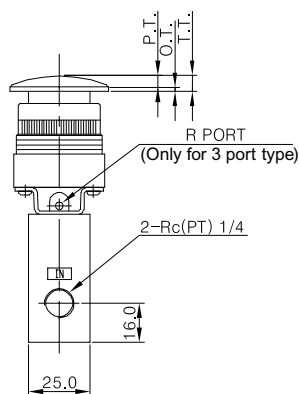
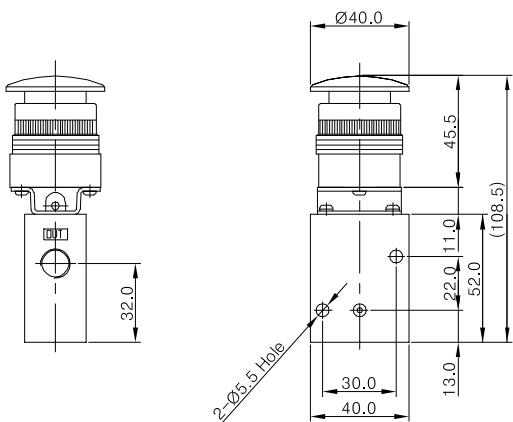
2、3 Port Mechanical Valve

KVM200 Series

K Series

Dimensions(mm)(外形尺寸图(毫米))

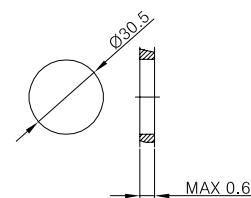
Push Button(大头按钮) KVM 220-02-30R, G, KVM 230-02-30R, G



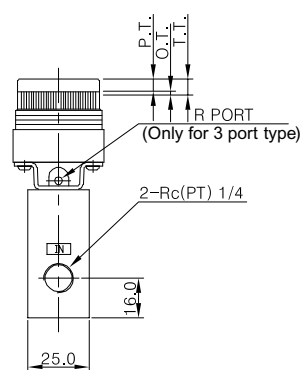
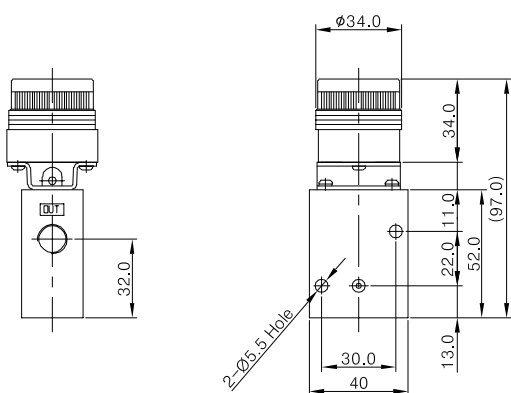
※ At 5kgf/cm²

F.O.F.	5.2kgf
P.T.	4.9mm
O.T.	1.6mm
T.T.	6.5mm

Panel Mounting Hole



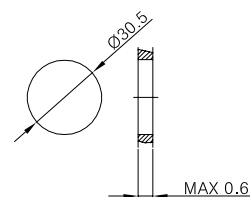
Flat Push Button (平头按钮) KVM 220-02-33, KVM 230-02-33



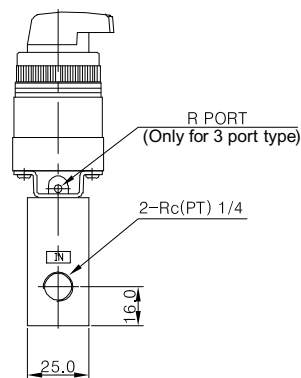
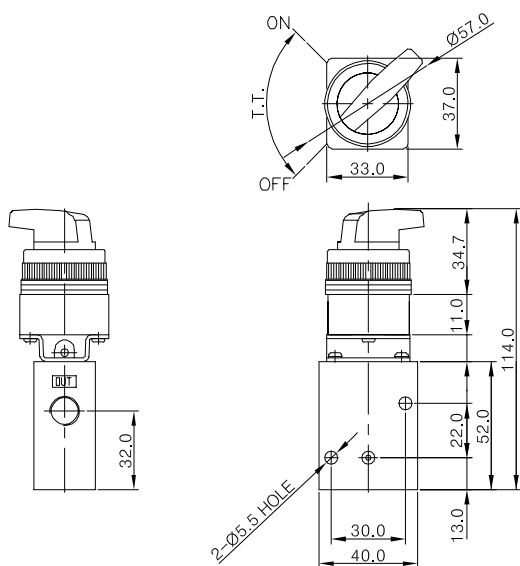
※ At 5kgf/cm²

F.O.F.	5.2kgf
P.T.	4.9mm
O.T.	1.6mm
T.T.	6.5mm

Panel Mounting Hole



Selector(旋转按钮) KVM 220-02-34, KVM 230-02-34



※ At 5kgf/cm²

F.O.F.	2.3kgf
T.T.	90°C

Panel Mounting Hole

