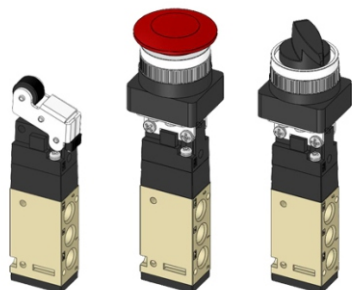


五通机械阀

5 Port Mechanical Valve

KVM210 Series

K Series



Common Specification (共同规格)

Fluid(流体)	Compressed Air(压缩空气)
Port Size(接管口径)	Rc(PT) 1/8, G 1/8
Ambient Temperature(环境温度)	0°C~60°C
Operating Pressure(使用压力)	1.5~9.9kgf/cm ² (0.15~0.99MPa)
Effective Sectional Area (有效截面积)	12.6mm ² (CV=0.6)
Lubrication (润滑)	Not Required(无需润滑)

Model (型号)	KVM 210-01-00	KVM 210-01-01(S)	KVM 210-01-02(S)	KVM 210-01-30-33	KVM 210-01-34
Symbol (图形符号)					

How To Order (型号表示方法)

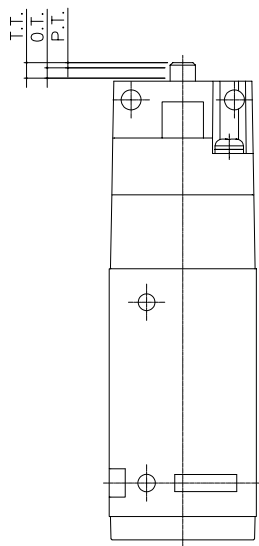
KVM **G** 210 - 01 - **30** - **R**

Port Type 螺纹种类
Nil(空) Rc(PT)(标准)
G G

Type of Actuator 开关方式
00 Standard(标准)
01 Roller Lever(双向滚轮)
02 One-way Lever(单向滚轮)
30 Push Button(大头按钮)
33 Flat Push Button(平头按钮)
34 Selector(旋转选择)

Option 选项
S Hard Steel Roller(强化滚轮)
R Red(红色按钮)
G Green(绿色按钮)

Operating Point of Mechanical Valve(机械阀操作点)



P.T. : Working distance from the free position to the operating position of the actuator.
(从执行器的自由位置到操作位置的移动距离)

O.T. : Working distance from the operating position to the operating limit of the actuator.
(从执行器的操作位置到操作极限位置的移动距离)

T.T. : Working distance from the free position to the operating limit of the actuator.
(从执行器的自由位置到操作极限位置的移动距离)

F.O.F. : Force required by actuator to move from the free position to the operating limit of the operating.
(执行器从自由位置移动到操作极限位置时需要的力度)

五通机械阀

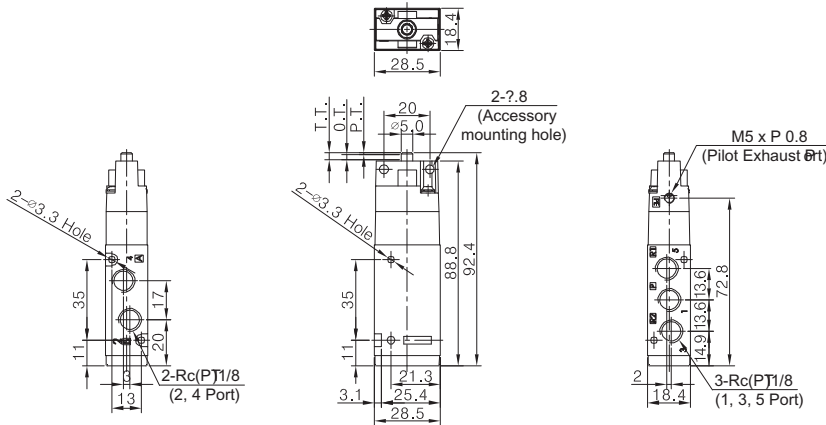
5 Port Mechanical Valve

KVM210 Series

K Series

Dimensions(mm)(外形尺寸图(毫米))

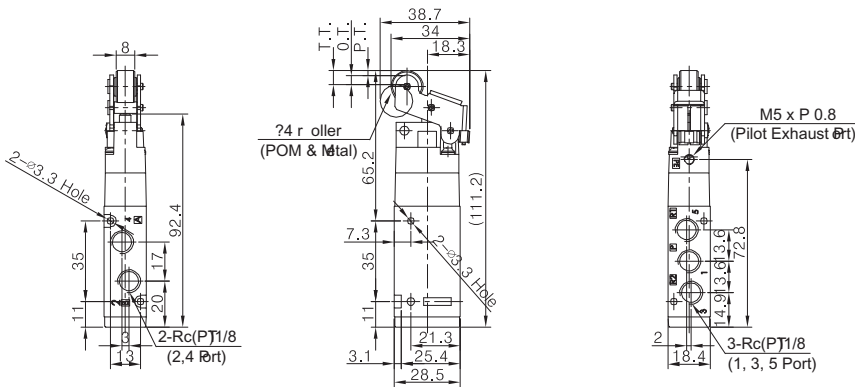
Standard(标准型) KVM 210-01-00



※ At 5kgf/cm²

F.O.F.	1.6kgf
P.T.	1.0mm
O.T.	2.0mm
T.T.	3.0mm

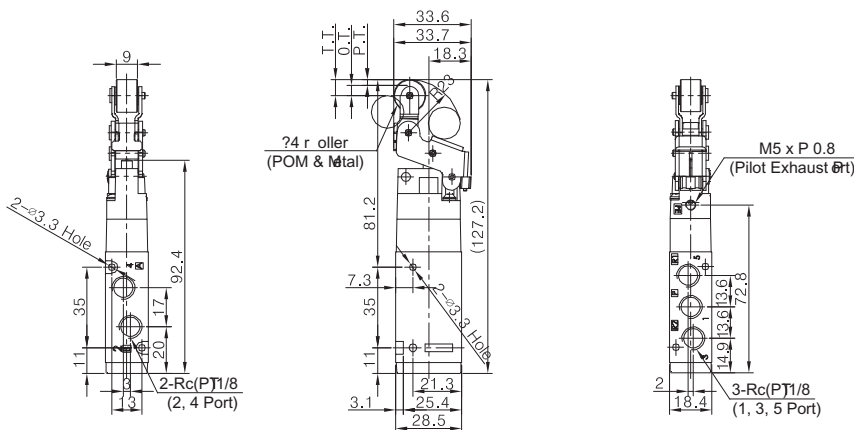
Roller Lever(双向滚轮) KVM 210-01-01, KVM 210-01-01S



※ At 5kgf/cm²

F.O.F.	0.8kgf
P.T.	2.2mm
O.T.	4.0mm
T.T.	6.2mm

One-way Lever(单向滚轮) KVM 210-01-02, KVM 210-01-02S

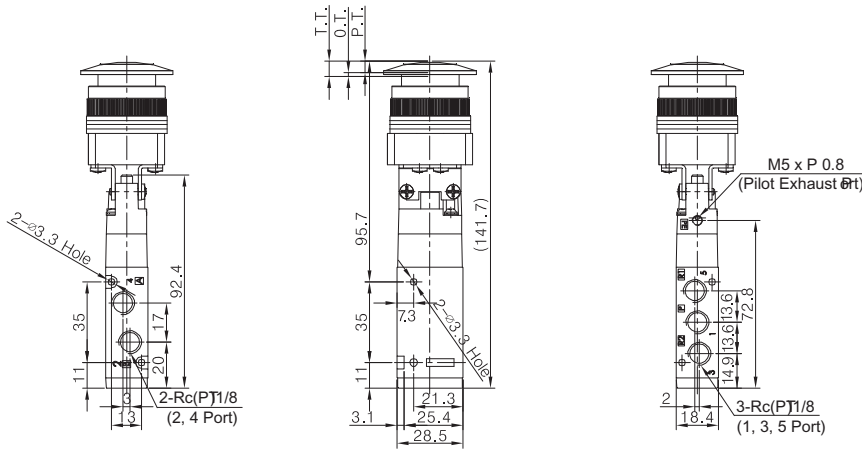


※ At 5kgf/cm²

F.O.F.	0.7kgf
P.T.	2.4mm
O.T.	4.6mm
T.T.	7.0mm

Dimensions(mm)(外形尺寸图(毫米))

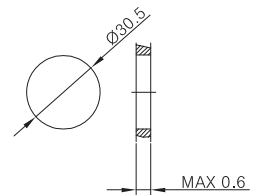
Push Button(大头按钮) KVM 210-01-30



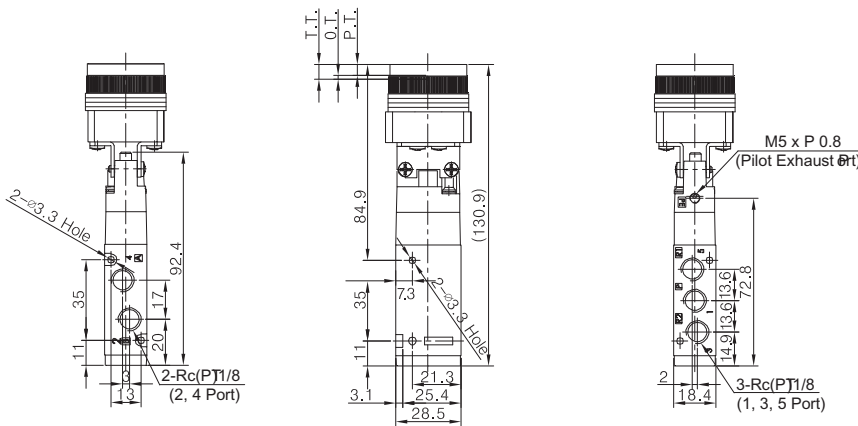
※ At 5kgf/cm²

F.O.F.	2.1kgf
P.T.	4.8mm
O.T.	1.7mm
T.T.	6.5mm

Panel Mounting Hole



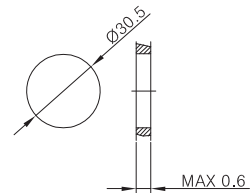
Flat Push Button(平头按钮) KVM 210-01-33



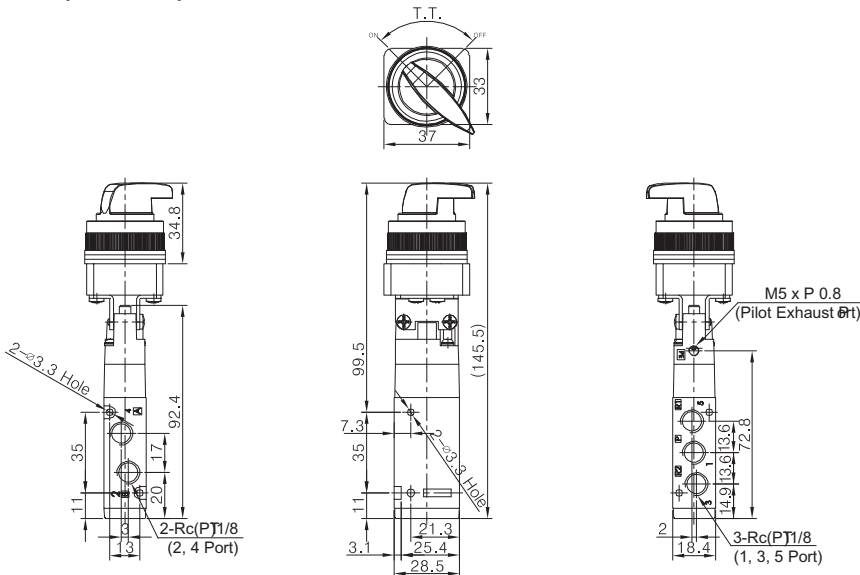
※ At 5kgf/cm²

F.O.F.	2.1kgf
P.T.	4.8mm
O.T.	1.7mm
T.T.	6.5mm

Panel Mounting Hole



Selector(旋转按钮) KVM 210-01-34



At 5kgf/cm²

F.O.F.	2.3kgf
T.T.	90°C

Panel Mounting Hole

