

# 五通机械阀

## 5 Port Mechanical Valve

### TVM350 Series



#### Common Specification (共同规格)

Fluid(流体)	Compressed Air(压缩空气)
Port Size(接管口径)	Rc(PT) 1/4, G 1/4
Ambient Temperature(环境温度)	0°C~60°C
Operating Pressure(使用压力)	0~9.9kgf/cm <sup>2</sup> (0~0.99MPa)
Effective Sectional Area (有效截面积)	19mm <sup>2</sup> (CV=1.0)
Lubrication (润滑)	Not Required(无需润滑)

Model (型号)	TVM 350-02-00	TVM 350-02-01(S)	TVM350-02-02(S)	TVM 350-02-30 -33	TVM 350-02-34
Symbol (图形符号)					

#### How To Order (型号表示方法)

TVM G 350 - 02 - 30 - R

##### Port Type

##### 螺纹种类

Nil(空)	Rc(PT)(标准)
G	G

##### Type of Actuator

##### 开关方式

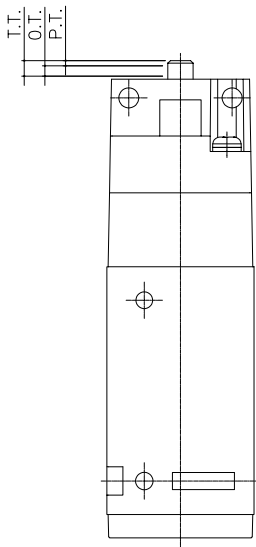
00	Standard(标准)
01	Roller Lever(双向滚轮)
02	One-way Lever(单向滚轮)
30	Push Button(大头按钮)
33	Flat Push Button(平头按钮)
34	Selector(旋转选择)

##### Option

##### 选项

S	Hard Steel Roller(强化滚轮)
R	Red(红色按钮)
G	Green(绿色按钮)

#### Operating Point of Mechanical Valve(机械阀操作点)



P.T. : Working distance from the free position to the operating position of the actuator.

(从执行器的自由位置到操作位置的移动距离)

O.T. : Working distance from the operating position to the operating limit of the actuator.

(从执行器的操作位置到操作极限位置的移动距离)

T.T. : Working distance from the free position to the operating limit of the actuator.

(从执行器的自由位置到操作极限位置的移动距离)

F.O.F. : Force required by actuator to move from the free position to the operating limit of the operating.

(执行器从自由位置移动到操作极限位置时需要的力度)

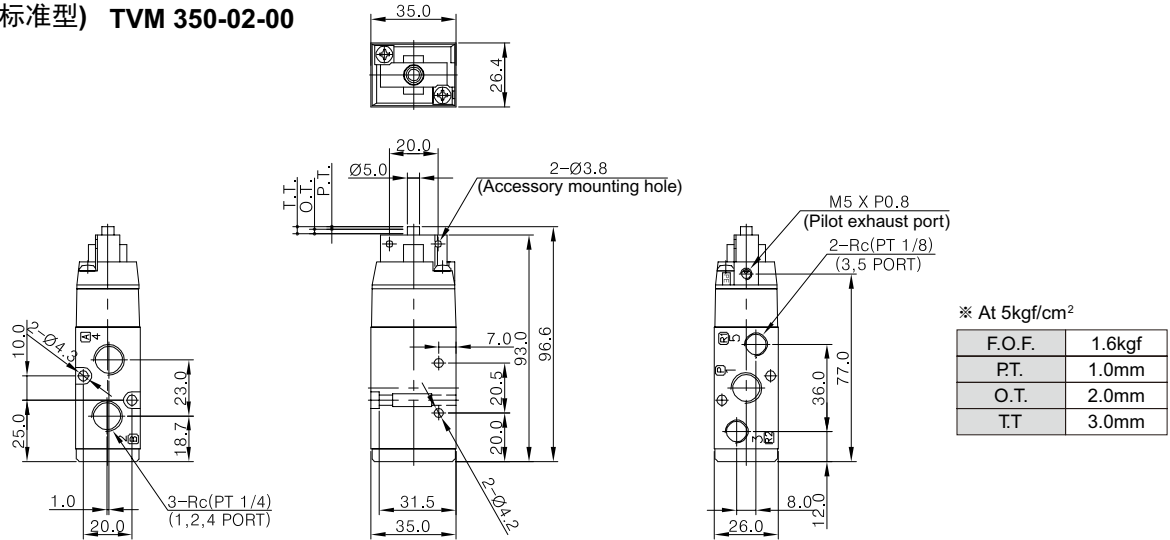
# 五通机械阀

## 5 Port Mechanical Valve

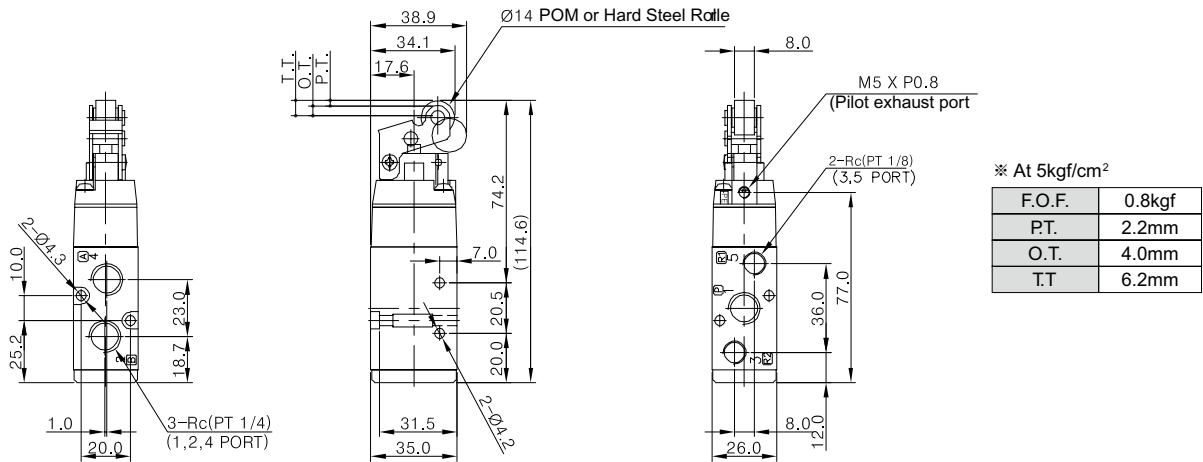
### TVM350 Series

#### Dimensions(mm)(外形尺寸图(毫米))

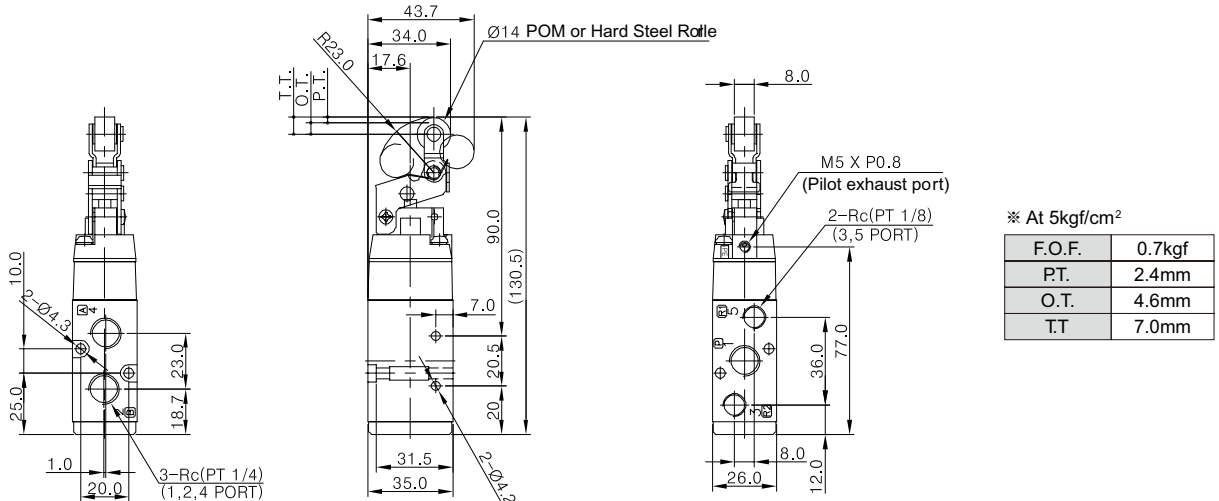
##### Standard(标准型) TVM 350-02-00



##### Roller Lever(双向滚轮) TVM 350-02-01, TVM 350-02-01S



##### One-Way Lever(单向滚轮) TVM 350-02-02, TVM 350-02-02S



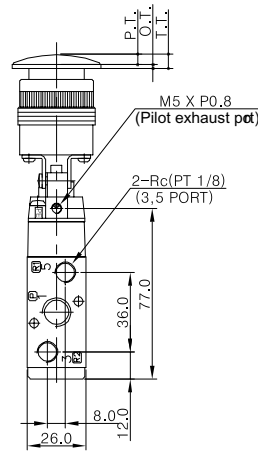
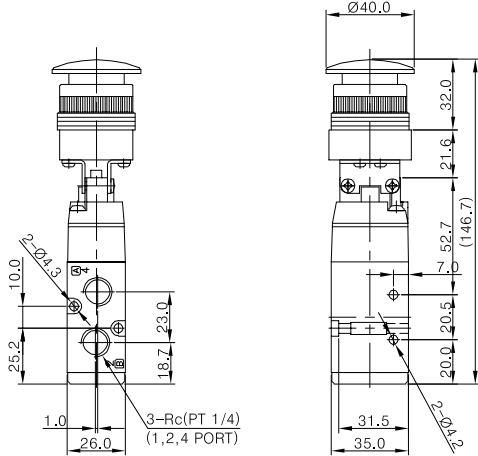
# 五通机械阀

## 5 Port Mechanical Valve

### TVM350 Series

#### Dimensions(mm)(外形尺寸图(毫米))

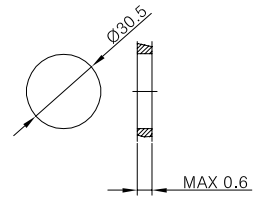
##### Push Button(大头按钮) TVM 350-02-30



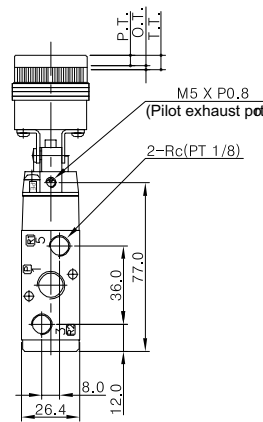
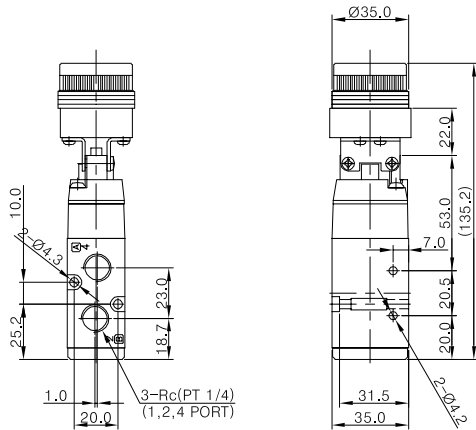
※ At 5kgf/cm<sup>2</sup>

F.O.F.	2.1kgf
P.T.	4.8mm
O.T.	1.7mm
T.T.	6.5mm

Panel Mounting Hole



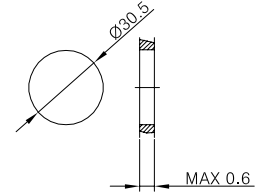
##### Flat Push Button(平头按钮) TVM 350-02-33



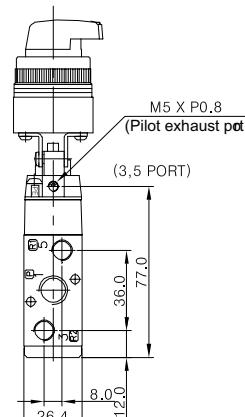
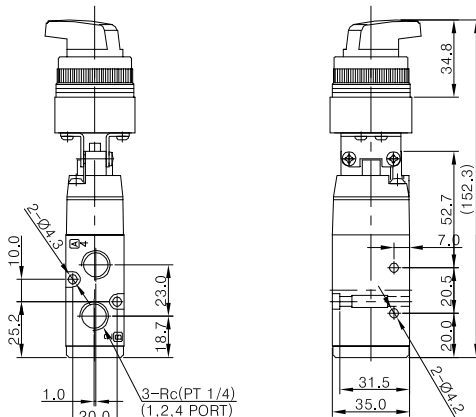
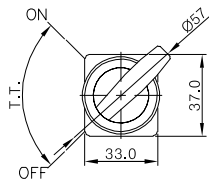
※ At 5kgf/cm<sup>2</sup>

F.O.F.	2.1kgf
P.T.	4.8mm
O.T.	1.7mm
T.T.	6.5mm

Panel Mounting Hole



##### Selector(旋转按钮) TVM 350-02-34



※ At 5kgf/cm<sup>2</sup>

F.O.F.	2.3kgf
T.T.	90°C

Panel Mounting Hole

