

标准薄型气缸 Compact Standard Cylinder

TCQ2, TCDQ2(Ø12~Ø25) Series



Common Specification (共同规格)

Fluid(流体)	Clean Air(洁净空气)
Action(动作形式)	Double Acting(双动) Single Acting(Spring Return)(单动(弹簧压回)) Single Acting(Spring Extended)(单动(弹簧压出))
Proof Press.(保证耐压力)	1.53Mpa
Max. Press.(最高使用压力)	1.02Mpa
Amb.Temp(环境及流体温度)	-10~+70°C(未冻结)
Rod End Thread(杆端螺纹)	Female(STD)(内螺纹(标准)),Male(外螺纹(任选))
Cushion(缓冲)	None(无)Rubber Cushion(橡胶缓冲)Air Cushion(气缓冲)
Stroke Tolerance(行程公差)	+1.0 0
Piston Speed(活塞速度)	50~500mm/s
*Lubrication(润滑)	Non-Lube(不需要)
Mounting(安装)	Through Hole(STD)(通孔标准),Both End Tapped(两端内螺纹)

*Please Use Turbine Oil 1st-Grade ISOVG32,If Necessary.(如需要润滑,请用透平1号油ISOVG32)

Features(特征)

- 两端通孔螺纹丝锥加工(标准)适用于压入、钳夹或短行程工作。
- 轴向长度比原来的系列短,可以安装在狭窄的空间。
- 全部使用螺栓的安装方式,不需要任何固定支架。
- 拥有经过电镀的华丽外表。
- Ideal for clamping, press-in and under short stroke condition.
- Can be installed even in narrow space with shorter length in axial thrust direction.
- Easy installation only with bolts.
- Excellent appearance after anodizing.

How To Order (型号表示方法)

Nil(空)	Single Rod(单活塞杆型)																		
W	Double Rod End(双活塞杆型)																		
K	Rod Non-rotary (Ø12~Ø100)(杆不回转型)	D	Double Acting(双动)																
S	Anti-lateral Load Cylinder(耐横向负载型)	S	Single Acting(Spring Return)(单动(弹簧压回))(Ø12~Ø50)	Nil(空)	Rod End Female Thread(杆端内螺纹)														
M	Scraper Cylinder(Ø32~Ø80)(混入物刮除式)	T	Single Acting(Spring Extended)(单动(弹簧压出))(Ø12~Ø50)	M	Rod End Male Thread(杆端外螺纹)														
Type 类型		Action 动作形式		Option 缸身															



Magnet 有无磁环	Mounting 安装方式	Bore 缸径	Cushion/Accessory 缓冲/附件	*Auto Switch 磁性开关
Nil(空) None(无磁环)	B Through Hole Type(通孔)	Please refer to the table.请参考行程表	Nil(空) No Cushion(无缓冲)	Nil(空) None(无磁性开关)
D Built-in Magnet(有磁环)	A Both End Tapped Type(两端螺孔式)	Please refer to the table.请参考行程表	C Rubber Cushion(橡胶缓冲)	M9B Reed Switch(带有接点磁性开关)
	L Foot Type(脚座型)		A Air Cushion (Ø12~Ø100)(气缓冲)	M9NP Contactless Switch(无接点磁性开关)
	F Front Flange(杆侧法兰)	Stroke 行程	I I Type Knuckle Joint (I型单肘接头)	A93K Reed Switch(带有接点磁性开关)
	G Rear Flange(后法兰)	Please refer to the table.请参考行程表	Y Y Type Knuckle Joint (Y型双肘接头)	No. of Auto Switch 磁性开关数量
	D Double Clevis(双U钩型)			Nil(空) 2(个)
				S 1(个)
				n n(个)

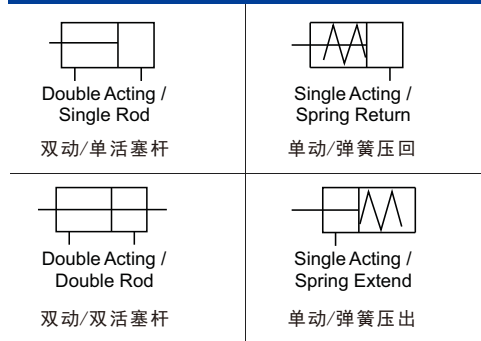
*Auto Switch (磁性开关)
引线长度表示记号:
无记号-1m(标准)
L-3m
Z-5m

Stroke (行程)

Bore Size (缸径)	Standard Stroke(标准行程)	
	Single Rod (单活塞杆)	Double Rod (双活塞杆)
Ø12	5, 10, 15, 20, 25, 30	
Ø16	5, 10, 15, 20, 25, 30	
Ø20	5, 10, 15, 20, 25, 30, 35, 40, 45, 50	
Ø25	5, 10, 15, 20, 25, 30, 35, 40, 45, 50	
Ø32	5, 10, 15, 20, 25, 30, 35, 40,	5, 10, 15, 20, 25, 30, 35, 40,
Ø40	45, 50, 75, 100	45, 50
Ø50	5, 10, 15, 20, 25, 30, 35, 40,	
Ø63	45, 50, 75, 100	
Ø80	5, 10, 15, 20, 25, 30, 35, 40,	
Ø100	45, 50, 75, 100	
Ø125	5, 10, 15, 20, 25, 30, 35, 40,	

Refer to page 1.107, for dimensions of long stroke type (cylinder above standard stroke)
长行程气缸尺寸请参考页码3.79

Symbol (图形符号)



标准型薄型气缸 Compact Standard Cylinder

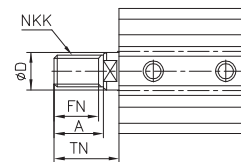
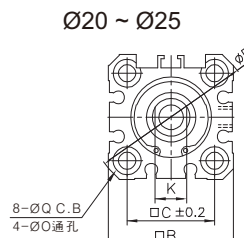
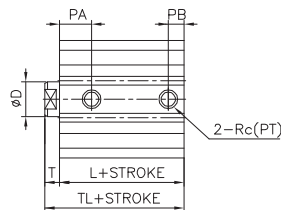
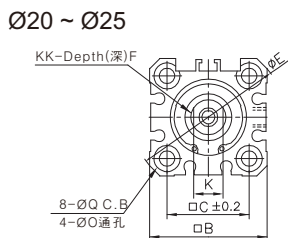
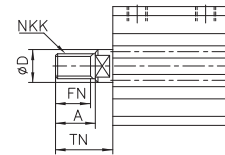
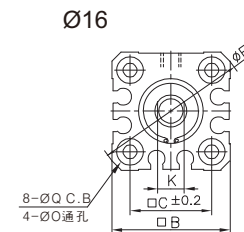
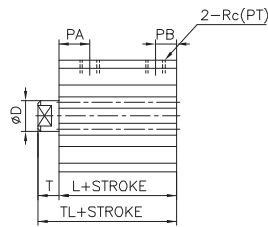
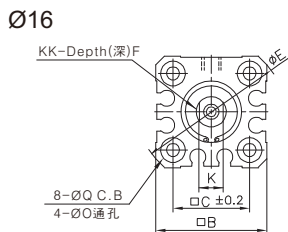
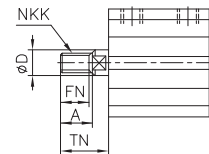
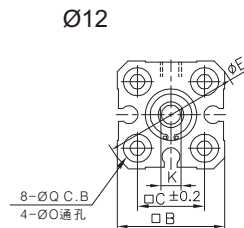
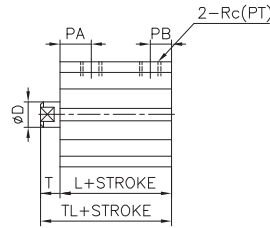
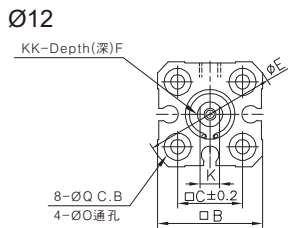
TCQ2, TCDQ2(Ø12~Ø100) Series

Dimensions(mm)(外形尺寸图(毫米))

TCQ2B/TCDQ2B(Ø12,Ø16,Ø20,Ø25) Through Hole Type(通孔)

Rod End-Female Thread (Standard) 杆端内螺纹 (标准)

Rod End-Male Thread 杆端外螺纹



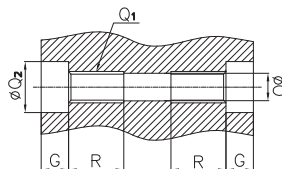
Unit : mm

Bore Size (缸径)	Without Magnet(无磁环) (TCQ2B)			With Magnet(有磁环) (TCDQ2B)			A	□B	□C	ØD	ØE	F	FN
	L	PA	TL	L	PA	TL							
Ø12	17	7.5	20.5	28	10	31.5	10.5	25	15.5	6	32	6	9
Ø16	18.5	8	22	30.5	10	34	12	29	20	8	38	8	10
Ø20	19.5	10.5	24	31.5	10.5	36	14	36	25.5	10	47	8	12
Ø25	22.5	11	27.5	32.5	11	37.5	17.5	40	28	12	52	12	15

Bore Size(缸径)	K	KK	NKK	ØO	PB	ØQ	Rc(PT)	T	TN
Ø12	5	M3x0.5	M5x0.8	3.5	5	6.5 Depth 3.5	M5x0.8	3.5	14
Ø16	6	M4x0.7	M6x1.0	3.5	5.5	6.5 Depth 3.5	M5x0.8	3.5	15.5
Ø20	8	M5x0.8	M8x1.25	5.5	6	9 Depth7	M5x0.8	4.5	18.5
Ø25	10	M6x1.0	M10x1.25	5.5	5.5	9 Depth7	M5x0.8	5	22.5

Both End Tapped Type (两端螺孔式) (A)

Unit : mm



Bore Size(缸径)	G	Q ₁	ØQ ₂	R
Ø12	3.5	M4X0.7	6.5	7
Ø16	3.5	M4X0.7	6.5	7
Ø20	7	M6X1.0	9	10
Ø25	7	M6X1.0	9	10

标准薄型气缸

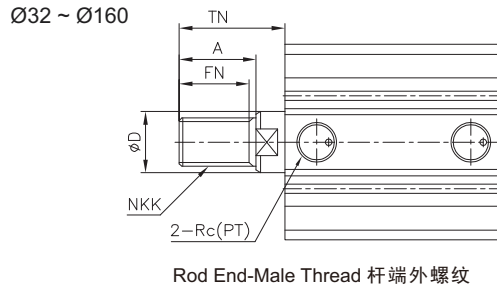
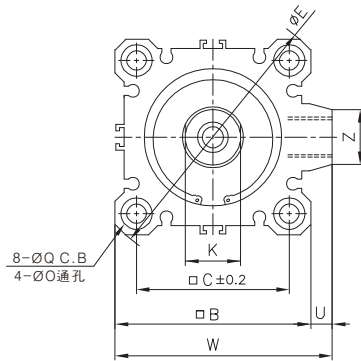
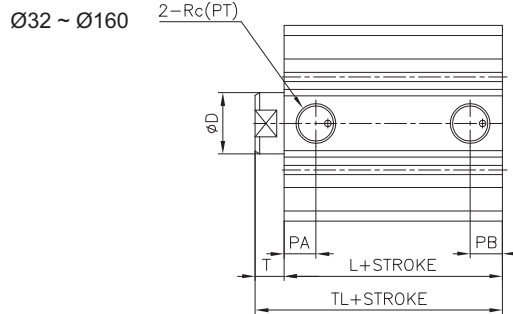
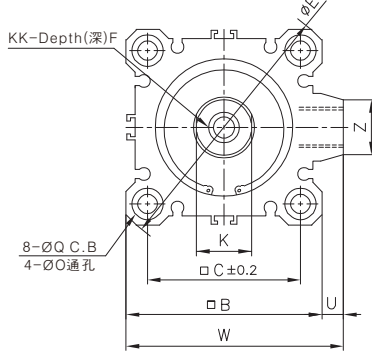
Compact Standard Cylinder

TCQ2, TCDQ2(Ø12~Ø160) Series

Dimensions(mm)(外形尺寸图(毫米))

TCQ2B/TCDQ2B(Ø32~Ø125) Through Hole Type(通孔)

Rod End-Female Thread (Standard) 杆端内螺纹 (标准)

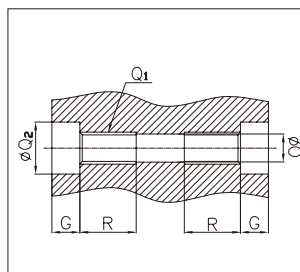


Unit : mm

Bore Size (缸径)	Stroke (行程)	Without Magnet (无磁环)(TCQ2B)		With Magnet (有磁环)(TCDQ2B)		A	B	C	ØD	ØE	F	FN	K	KK	NKK	ØO	PA	PB	ØQ
		L	TL	L	TL														
Ø32	5	23	30	33	40	23.5	45	34	16	60	13	20.5	14	M8X1.25	M14X1.5	5.5	11.5	5.5	9 Depth 7
	10~50	33	40														10.5	7.5	
	75,100	33	40																
Ø40	5~50	29.5	36.5	39.5	46.5	23.5	52	40	16	69	13	20.5	14	M8X1.25	M14X1.5	5.5	12	8.5	9 Depth 7
	75,100	39.5	46.5																
Ø50	5~50	30.5	38.5	40.5	48.5	28.5	64	50	20	86	15	26	18	M10X1.5	M18X1.5	6.8	10.5	10.5	11 Depth 8
	75,100	40.5	48.5																
Ø63	5~50	36	44	46	54	28.5	77	60	20	103	15	26	18	M10X1.5	M18X1.5	9	15	11	14 Depth 10.5
	75,100	46	54																
Ø80	5~50	43.5	53.5	53.5	63.5	35.5	98	77	25	132	21	32.5	22	M16X2.0	M22X1.5	11	18	12.5	17.5 Depth 13.5
	75,100	53.5	63.5																
Ø100	5~50	53	65	63	75	35.5	117	94	30	156	27	32.5	27	M20X2.5	M26X1.5	11	23	13	17.5 Depth 13.5
	75,100	63	75																
Ø125	10~300	83	99	83	99	45	142	114	35	190	30	42	30	M22X2.5	M30X1.5	12.5	24.5	24.5	21.2 Depth 18.4
Ø140	10~300	83	99	83	99	45	158	128	35	210	30	42	30	M22X2.5	M30X1.5	12.5	24.5	24.5	21.2 Depth 18.4
Ø160	10~300	91	108	91	108	50	178	144	40	238	33	47	36	M24X3	M36X1.5	14.5	27.5	27.5	24.2 Depth 21.2

Bore Size(缸径)	Rc(PT)	T	TN	U	W	Z
Ø32	M5X0.8 (5st)	7	28.5	4.5	49.5	14
	Rc(PT)1/8					
Ø40	Rc(PT)1/8	7	28.5	5	57	14
Ø50	Rc(PT)1/4	8	33.5	7	71	18
Ø63	Rc(PT)1/4	8	33.5	7	84	18
Ø80	Rc(PT)3/8	10	43.5	6	104	22
Ø100	Rc(PT)3/8	12	43.5	6.5	123.5	22
Ø125	Rc(PT)3/8	16	58	11	153	32
Ø140	Rc(PT)3/8	16	58	10	168	32
Ø160	Rc(PT)3/8	17	64	10	188	32

Both End Tapped Type (两端螺孔式) (A)



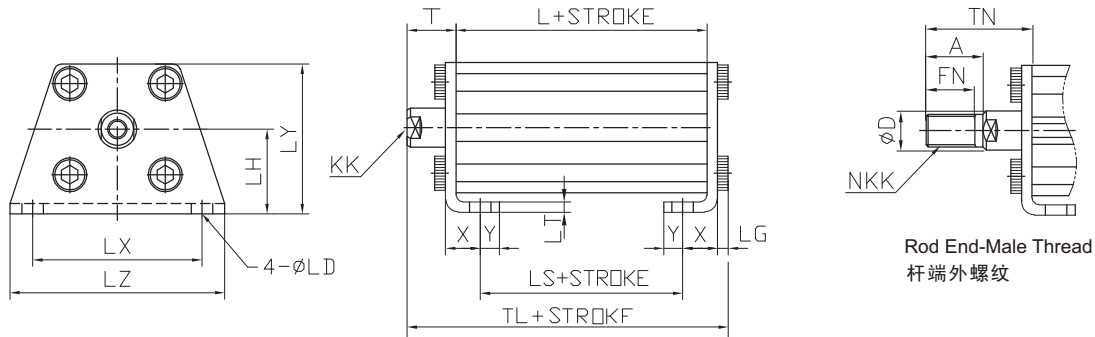
Bore size	G	Q ₁	ØQ ₂	R
Ø32	7	M6X1.0	9	10
Ø40	7	M6X1.0	9	10
Ø50	8	M8X1.25	11	14
Ø63	10.5	M10X1.50	14	18
Ø80	13.5	M12X1.75	17.5	22
Ø100	13.5	M12X1.75	17.5	22
Ø125	18.4	M14X2.0	21.2	25
Ø140	18.4	M14X2.0	21.2	25
Ø160	21.2	M16X2.0	24.2	28

标准薄型气缸 Compact Standard Cylinder

TCQ2, TCDQ2(Ø32~Ø125) Series

Dimensions(mm)(外形尺寸图(毫米))

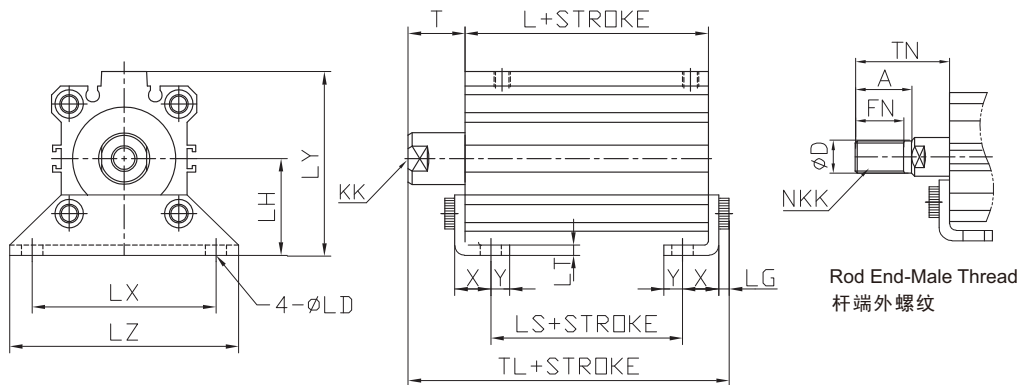
Foot Type(角座型) TCQ2L/TCDQ2L(Ø12,Ø16,Ø20,Ø25)



Unit : mm

Bore Size (缸径)	Without Magnet (无磁环)(TCQ2L)			With Magnet (有磁环)(TCDQ2L)			A	ØD	FN	LD	LG	LH	LT	LX	LY	LZ	KK	NKK	T	TN	X	Y
	TL	L	LS	TL	L	LS																
Ø12	35.3	17	5	46.3	28	16	10.5	6	9	4.5	2.8	17	2	34	29.5	44	M3X0.5	M5X0.8	13.5	24	8	4.5
Ø16	36.8	18.5	6.5	48.8	30.5	18.5	12	8	10	4.5	2.8	19	2	38	33.5	48	M4X0.7	M6X1.0	13.5	25.5	8	5
Ø20	41.2	19.5	7.5	53.2	31.5	19.5	14	10	12	6.6	4	24	3.2	48	42	62	M5X0.8	M8X1.25	14.5	28.5	9.2	5.8
Ø25	44.7	22.5	7.5	54.7	32.5	17.5	17.5	12	15	6.6	4	26	3.2	52	46	66	M6X1.0	M10X1.25	15	32.5	10.7	5.8

Foot Type(角座型) TCQ2L/TCDQ2L(Ø32,Ø40,Ø50,Ø63,Ø80,Ø100)



Unit : mm

Bore Size (缸径)	Stroke (行程)	Without Magnet (无磁环)(TCQ2L)			With Magnet (有磁环)(TCDQ2L)			A	ØD	FN	LD	LG	LH	LT	LX	LY	LZ	KK	NKK	T	TN	X	Y
		TL	L	LS	TL	L	LS																
Ø32	5~50	47.2	23	7	57.2	33	17	23.5	16	20.5	6.6	4	30	3.2	58	57	71	M8X1.25	M14X1.5	17	38.5	11.2	5.8
	75,100	57.2	33	17																			
Ø40	5~50	53.7	29.5	13.5	63.7	39.5	23.5	23.5	16	20.5	6.6	4	33	3.2	64	64	78	M8X1.25	M14X1.5	17	38.5	11.2	7
	75,100	63.7	39.5	23.5																			
Ø50	10~50	56.7	30.5	7.5	66.7	40.5	17.5	28.5	20	26	9	5	39	3.2	79	78	95	M10X1.5	M18X1.5	18	43.5	14.7	8
	75,100	66.7	40.5	17.5																			
Ø63	10~50	62.2	36	10	72.2	46	20	28.5	20	26	11	5	46	3.2	95	91.5	113	M10X1.5	M18X1.5	18	43.5	16.2	9
	75,100	72.2	46	20																			
Ø80	10~50	75	43.5	13.5	85	53.5	23.5	35.5	25	32.5	13	7	59	4.5	118	114	140	M16X2.0	M22X1.5	20	53.5	19.5	11
	75,100	85	53.5	23.5																			
Ø100	10~50	88	53	19	98	63	29	35.5	30	32.5	13	7	71	6	137	136	162	M20X2.5	M26X1.5	22	53.5	23	12.5
	75,100	98	63	29																			

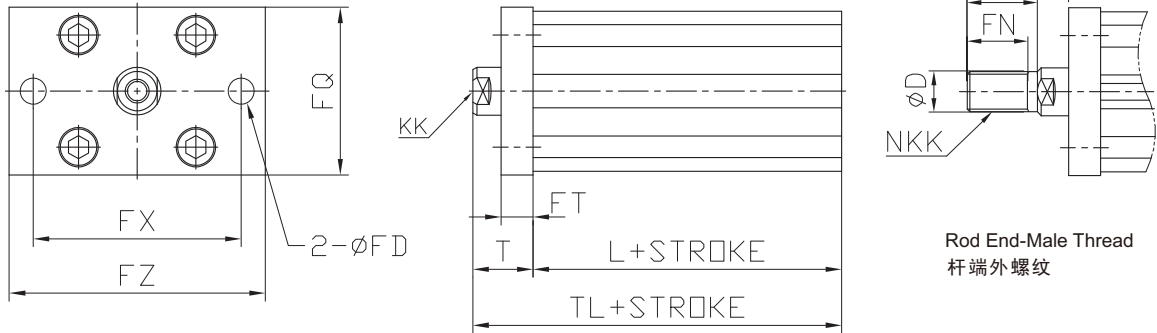
标准薄型气缸

Compact Standard Cylinder

TCQ2, TCDQ2(Ø12~Ø100) Series

Dimensions(mm)(外形尺寸图(毫米))

Front Flange(杆侧法兰) TCQ2F/TCDQ2F(Ø12,Ø16,Ø20,Ø25)

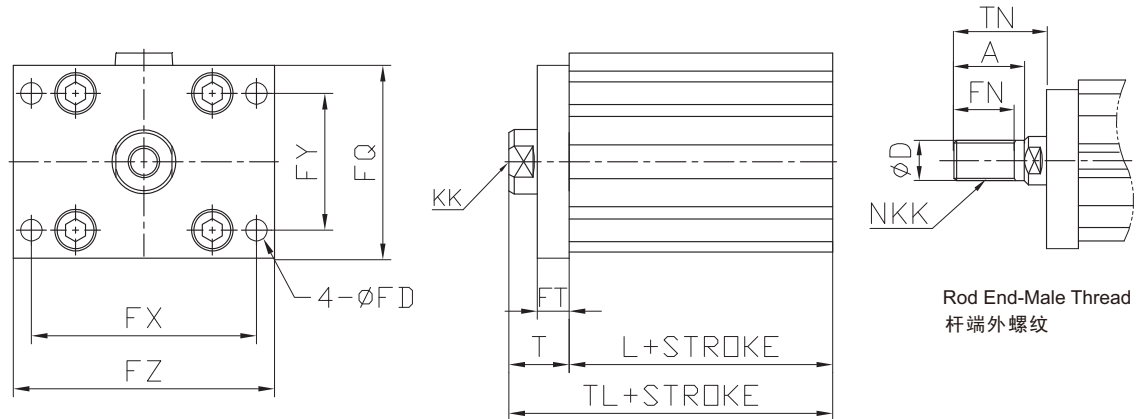


Rod End-Male Thread
杆端外螺纹

Unit : mm

Bore Size (缸径)	Without Magnet (无磁环)(TCQ2F)		With Magnet (有磁环)(TCDQ2F)		A	ØD	FD	FN	FQ	FT	FX	FZ	KK	NKK	T	TN
	TL	L	TL	L												
Ø12	30.5	17	41.5	28	10.5	6	4.5	9	25	5.5	45	55	M3X0.5	M5X0.8	13.5	24
Ø16	32	18.5	44	30.5	12	8	4.5	10	30	5.5	45	55	M4X0.7	M6X1.0	13.5	25.5
Ø20	34	19.5	46	31.5	14	10	6.6	12	39	8	48	60	M5X0.8	M8X1.25	14.5	28.5
Ø25	37.5	22.5	47.5	32.5	17.5	12	6.6	15	42	8	52	64	M6X1.0	M10X1.25	15	32.5

Front Flange(杆侧法兰) TCQ2F/TCDQ2F(Ø32,Ø40,Ø50,Ø63,Ø80,Ø100)



Rod End-Male Thread
杆端外螺纹

Unit : mm

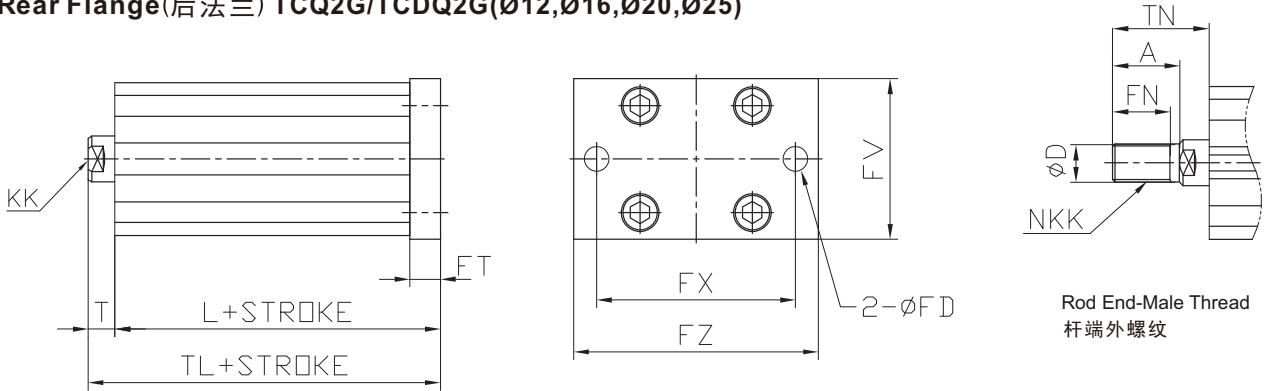
Bore Size (缸径)	Stroke (行程)	Without Magnet (无磁环)(TCQ2F)		With Magnet (有磁环)(TCDQ2F)		A	ØD	FD	FN	FQ	FT	FX	FY	FZ	KK	NKK	T	TN
		TL	L	TL	L													
Ø32	5~50	40	23	50	33	23.5	16	5.5	20.5	48	8	56	34	65	M8X1.25	M14X1.5	17	38.5
	75,100	50	33															
Ø40	5~50	46.5	29.5	56.5	39.5	23.5	16	5.5	20.5	54	8	62	40	72	M8X1.25	M14X1.5	17	38.5
	75,100	56.5	39.5															
Ø50	10~50	48.5	30.5	58.5	40.5	28.5	20	6.6	26	67	9	76	50	89	M10X1.5	M18X1.5	18	43.5
	75,100	58.5	40.5															
Ø63	10~50	54	36	64	46	28.5	20	9	26	80	9	92	60	108	M10X1.5	M18X1.5	18	43.5
	75,100	64	46															
Ø80	10~50	63.5	43.5	73.5	53.5	35.5	25	11	32.5	99	11	116	77	134	M16X2.0	M22X1.5	20	53.5
	75,100	73.5	53.5															
Ø100	10~50	75	53	85	63	35.5	30	11	32.5	117	11	136	94	154	M20X2.5	M26X1.5	20	53.5
	75,100	85	63															

标准薄型气缸 Compact Standard Cylinder

TCQ2, TCDQ2(Ø12~Ø100) Series

Dimensions(mm)(外形尺寸图(毫米))

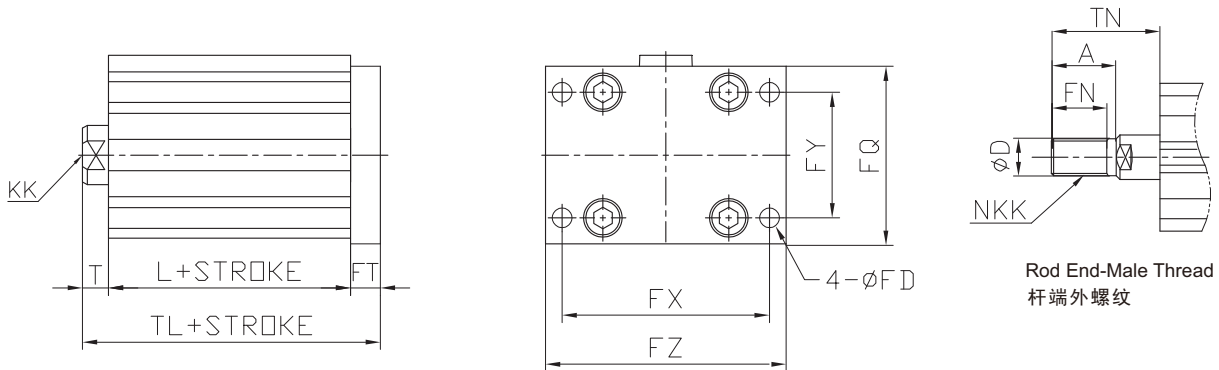
Rear Flange(后法兰) TCQ2G/TCDQ2G(Ø12,Ø16,Ø20,Ø25)



Unit : mm

Bore size (缸径)	Without Magnet (无磁环)(TCQ2G)		With Magnet (有磁环)(TCDQ2G)		A	ØD	FD	FN	FT	FV	FX	FZ	KK	NKK	T	TN
	TL	L	TL	L												
Ø12	26	17	37	28	10.5	6	4.5	9	5.5	25	45	55	M3X0.5	M5X0.8	3.5	14
Ø16	27.5	18.5	39.5	30.5	12	8	4.5	10	5.5	30	45	55	M4X0.7	M6X1.0	3.5	15.5
Ø20	32	19.5	44	31.5	14	10	6.6	12	8	39	48	60	M5X0.8	M8X1.25	4.5	18.5
Ø25	35.5	22.5	45.5	32.5	17.5	12	6.6	15	8	42	52	64	M6X1.0	M10X1.25	5	22.5

Rear Flange(后法兰) TCQ2G/TCDQ2G(Ø32,Ø40,Ø50,Ø63,Ø80,Ø100)



Unit : mm

Bore size (缸径)	Stroke (行程)	Without Magnet (无磁环)(TCQ2G)		With Magnet (有磁环)(TCDQ2G)		A	ØD	FD	FN	FQ	FT	FX	FY	FZ	KK	NKK	T	TN
		TL	L	TL	L													
Ø32	5~50	38	23	48	33	23.5	16	5.5	20.5	48	8	56	34	65	M8X1.25	M14X1.5	7	28.5
	75,100	48	33															
Ø40	5~50	44.5	29.5	54.5	39.5	23.5	16	5.5	20.5	54	8	62	40	72	M8X1.25	M14X1.5	7	28.5
	75,100	54.5	39.5															
Ø50	10~50	47.5	30.5	57.5	40.5	28.5	20	6.6	26	67	9	76	50	89	M10X1.5	M18X1.5	8	33.5
	75,100	57.5	40.5															
Ø63	10~50	53	36	63	46	28.5	20	9	26	80	9	92	60	108	M10X1.5	M18X1.5	8	33.5
	75,100	63	46															
Ø80	10~50	64.5	43.5	74.5	53.5	35.5	25	11	32.5	99	11	116	77	134	M16X2.0	M22X1.5	10	43.5
	75,100	74.5	53.5															
Ø100	10~50	76	53	86	63	35.5	30	11	32.5	117	11	136	94	154	M20X2.5	M26X1.5	12	43.5
	75,100	86	63															

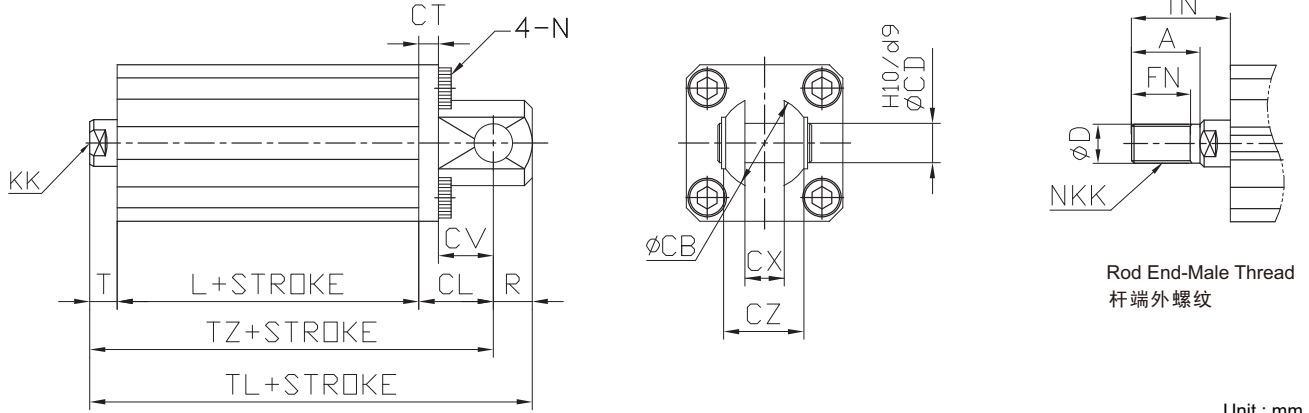
标准薄型气缸

Compact Standard Cylinder

TCQ2, TCDQ2(Ø12~Ø100) Series

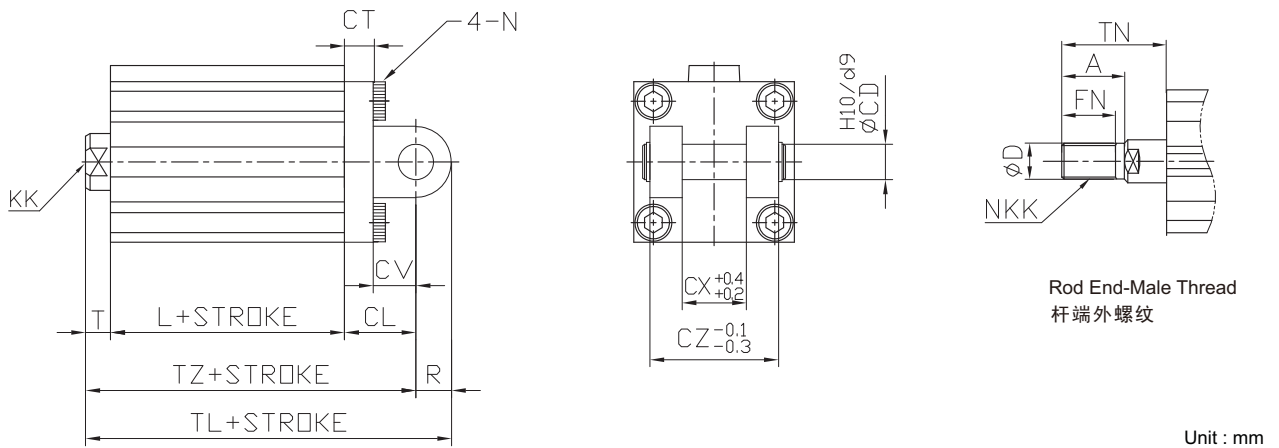
Dimensions(mm)(外形尺寸图(毫米))

Double Clevis (双U钩型) TCQ2D/TCDQ2D(Ø12,Ø16,Ø20,Ø25)



Bore Size (缸径)	Without Magnet (无磁环)(TCQ2D)			With Magnet (有磁环)(TCDQ2D)			A	øD	FN	CB	CD	CL	CT	CV	CX	CZ	KK	N	NKK	R	T	TN
	TL	L	TZ	TL	L	TZ																
Ø12	40.5	17	34.5	51.5	28	45.5	10.5	6	9	12	5	14	4	7	5	10	M3X0.5	M4XP0.7	M5X0.8	6	3.5	14
Ø16	43	18.5	37	55	30.5	49	12	8	10	14	5	15	4	10	6.5	12	M4X0.7	M4XP0.7	M6X1.0	6	3.5	15.5
Ø20	51	19.5	42	63	31.5	54	14	10	12	20	8	18	5	12	8	16	M5X0.8	M6XP1.0	M8X1.25	9	4.5	18.5
Ø25	57.5	22.5	47.5	67.5	32.5	57.5	17.5	12	15	24	10	20	5	14	10	20	M6X1.0	M6XP1.0	M10X1.25	10	5	22.5

Double Clevis (双U钩型) TCQ2D/TCDQ2D(Ø32,Ø40,Ø50,Ø63,Ø80,Ø100)



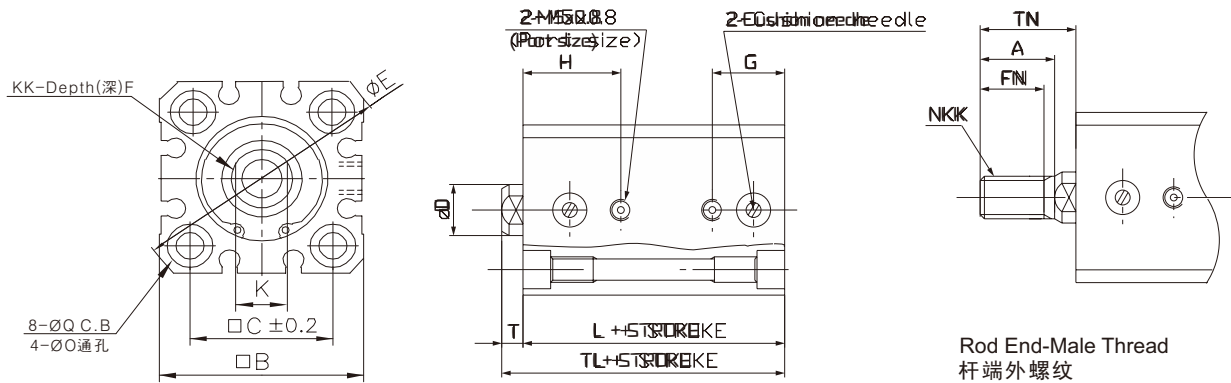
Bore Size (缸径)	Stroke (行程)	Without Magnet (无磁环)(TCQ2D)			With Magnet (有磁环)(TCDQ2D)			A	CD	CL	CT	CV	CX	CZ	øD	FN	KK	N	NKK	R	T	TN
		TL	L	TZ	TL	L	TZ															
Ø32	5~50	60	23	50	70	33	60	23.5	10	20	5	14	18	36	16	20.5	M8X1.25	M6XP1.0	M14X1.5	10	7	28.5
	75,100	70	33	60																		
Ø40	5~50	68.5	29.5	58.5	78.5	39.5	68.5	23.5	10	22	6	14	18	36	16	20.5	M8X1.25	M6XP1.0	M14X1.5	10	7	28.5
	75,100	78.5	39.5	68.5																		
Ø50	10~50	80.5	30.5	66.5	90.5	40.5	76.5	28.5	14	28	7	20	22	44	20	26	M10X1.5	M8XP1.25	M18X1.5	14	8	33.5
	75,100	90.5	40.5	76.5																		
Ø63	10~50	88	36	84	98	46	84	28.5	14	30	8	20	22	44	20	26	M10X1.5	M10XP1.5	M18X1.5	14	8	33.5
	75,100	98	46																			
Ø80	10~50	109.5	43.5	101.5	119.5	53.5	101.5	35.5	18	38	10	27	28	56	25	32.5	M16X2.0	M12XP1.75	M22X1.5	18	10	43.5
	75,100	119.5	53.5																			
Ø100	10~50	132	53	120	142	63	120	35.5	22	45	13	31	32	64	30	32.5	M20X2.5	M12XP1.75	M26X1.5	22	12	43.5
	75,100	142	63																			

标准薄型气缸 Compact Standard Cylinder

TCQ2, TCDQ2(Ø12~Ø100) Series

Dimensions(mm)(外形尺寸图(毫米))

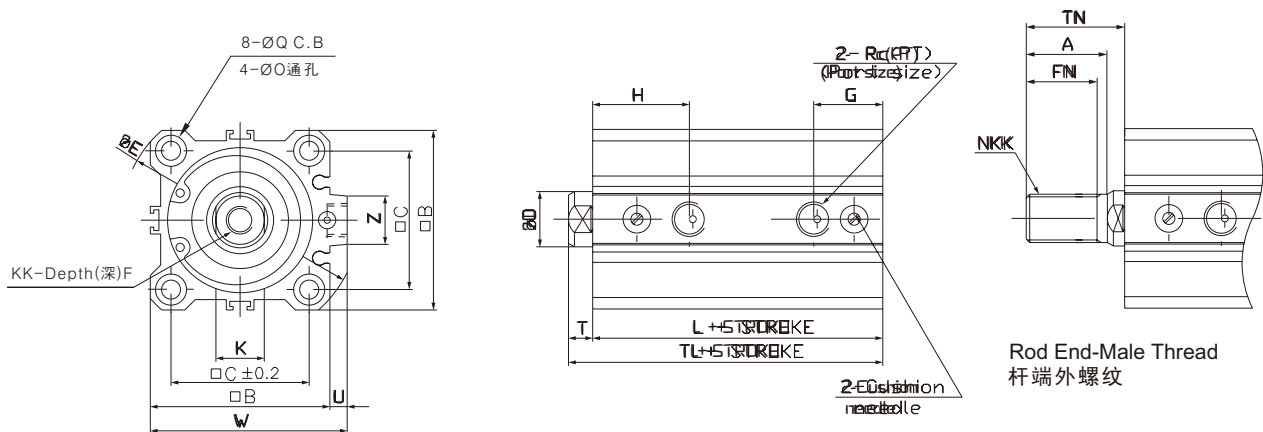
Air Cushion(气缓冲) TCQ2-A/TCDQ2-A(Ø20,Ø25)



Bore Size (缸径)	A	□B	□C	ØD	ØE	F	G	H	K	KK	L	NKK	ØQ	Rc(PT)	T	TL	TN
Ø20	14	36	25.5	10	47	8	15.5	21	12	M5X0.8	32	M8X1.25	5.5	9 Depth 7	4.5	36.5	18.5
Ø25	17.5	40	28	12	52	12	17	23	15	M6X1.0	36.5	M10X1.25	5.5	9 Depth 7	5	41.5	22.5

Dimensions(mm)(外形尺寸图(毫米))

Air Cushion(气缓冲) (Ø32, Ø40, Ø50, Ø63, Ø80, Ø100)



Unit : mm

Bore Size (缸径)	A	□B	□C	ØD	ØE	F	FN	G	H	K	KK	L	NKK	ØO	ØQ	Rc(PT)	T	TL	TN	U	W	Z
Ø32	23.5	45	34	16	60	13	20.5	18.5	23	14	M8X1.25	37	M14X1.5	5.5	9 Depth 7	1/8	7	44	28.5	4.5	49.5	14
Ø40	23.5	52	40	16	69	13	20.5	20	28	14	M8X1.25	44	M14X1.5	5.5	9 Depth 7	1/8	7	51	28.5	5	57	14
Ø50	28.5	64	50	20	86	15	26	28.5	31.5	18	M10X1.5	49.5	M18X1.5	6.8	11 Depth 8	1/4	8	57.5	33.5	7	71	18
Ø63	28.5	77	60	20	103	15	26	31	34	18	M10X1.5	55	M18X1.5	9	14 Depth 10.5	1/4	8	63	33.5	7	84	18
Ø80	35.5	98	77	25	132	21	32.5	35.5	39	22	M16X2.0	63.5	M22X1.5	11	17 Depth 13.5	3/8	10	73.5	43.5	6	104	22
Ø100	35.5	117	94	30	156	27	32.5	40	43	27	M20X2.5	76	M26X1.5	11	17 Depth 13.5	3/8	12	88	43.5	6.5	123.5	22

标准薄型气缸

Compact Standard Cylinder

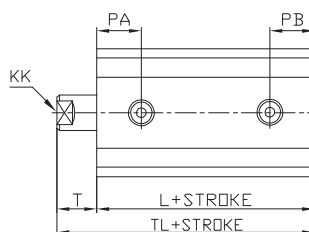
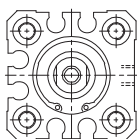
TCQ2, TCDQ2(Ø12~Ø100) Series

Dimensions(mm)(外形尺寸图(毫米))

Long Stroke Cylinder (长行程气缸)

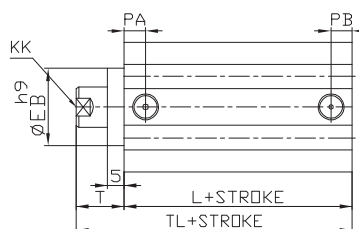
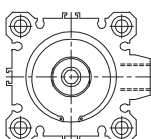
Rod End-Female Thread (Standard) (Ø12 ~ Ø20)

杆端内螺纹(标准)



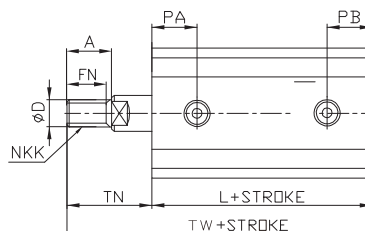
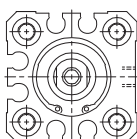
Rod End-Female Thread (Standard) (Ø25 ~ Ø125)

杆端内螺纹(标准)



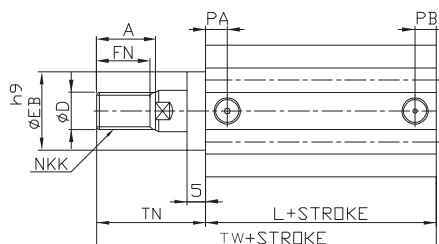
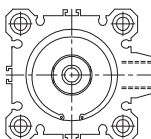
Rod End-Male Thread (Ø12 ~ Ø20)

杆端外螺纹



Rod End-Male Thread (Ø25 ~ Ø125)

杆端外螺纹



Unit : mm

Bore Size (缸径)	Stroke (行程)	A	ØD	ØEB	FN	L	KK	NKK	PA	PB	T	TL	TW	TN
Ø12	35~100	10.5	6	-	9	35	M3X0.5	M5X0.8	10	10	13.5	48.5	59	24
Ø16	35~100	12	8	-	10	38	M4X0.7	M6X1.0	10	10	13.5	51.5	63.5	25.5
Ø20	75~200	14	10	-	12	41	M5X0.8	M8X1.25	10.5	10.5	14.5	55.5	69.5	28.5
Ø25	75~200	17.5	12	17	15	44	M6X1.0	M10X1.25	11	11	15	59	76.5	32.5
Ø32	125~300	23.5	16	22	20.5	45.5	M8X1.25	M14X1.5	12.5	12.5	17	62.5	84	38.5
Ø40	125~300	23.5	16	28	20.5	55	M8X1.25	M14X1.5	14	14	17	72	93.5	38.5
Ø50	125~300	28.5	20	35	26	55.5	M10X1.5	M18X1.5	14	14	18	73.5	99	43.5
Ø63	125~300	28.5	20	35	26	57	M10X1.5	M18X1.5	16.5	16.5	18	75	100.5	43.5
Ø80	125~300	35.5	25	43	32.5	66	M16X2.0	M22X1.5	19	19	20	86	119.5	53.5
Ø100	125~300	35.5	30	59	32.5	75.5	M20X2.5	M26X1.5	23	23	22	97.5	129	53.5
Ø125	5~300	45	35	35	42	83	M22X2.5	M30X1.5	24.5	24.5	16	99	141	58

*Ø125 type and standard type have the same dimensions. (缸径Ø125与标准型尺寸一致)

* For dimensions not shown in those figures, refer to the standard type. (未标注的尺寸请参考标准型)

标准薄型气缸 Compact Standard Cylinder

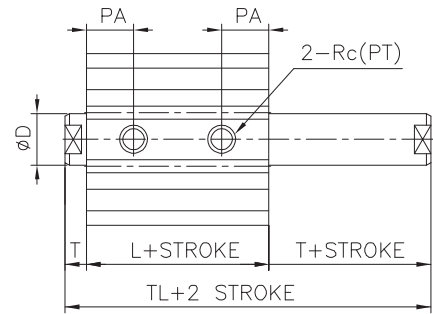
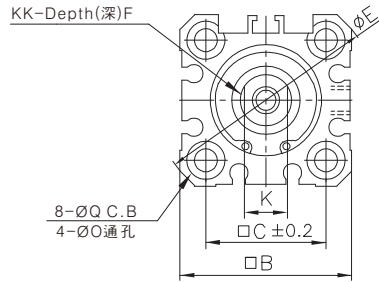
TCQ2W, TCDQ2W(Ø20~Ø25) Series

Dimensions(mm)(外形尺寸图(毫米))

Double Acting Double Rod (双动双活塞杆) TCQ2W-D/TCDQ2W-D

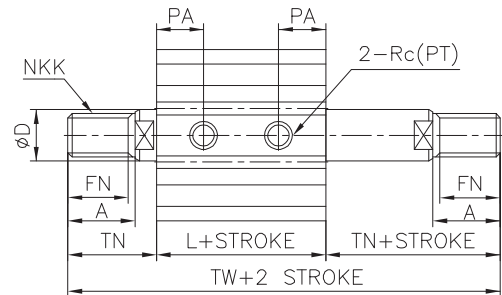
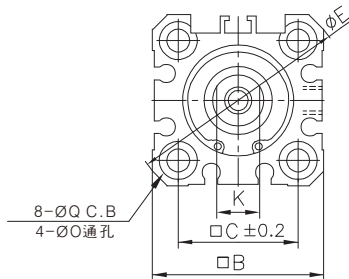
Rod End-Female Thread (Standard)
杆端内螺纹(标准)

Ø20 ~ Ø25



Rod End-Male Thread
杆端外螺纹

Ø20 ~ Ø25

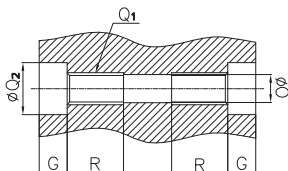


Unit : mm

Bore Size (缸径)	Without Magnet(无磁环) (TCQ2W)			With Magnet(有磁环) (TCDQ2W)			A	□B	□C	□C	ØD	ØE	F	FN	K
	L	TL	TW	L	TL	TW									
Ø20	26	35	63	38	47	75	14	36	36	25.5	10	47	8	12	8
Ø25	29	39	74	39	49	84	17.5	40	40	28	12	52	12	15	10

Bore Size (缸径)	K	KK	NKK	ØO	PA	ØQ	Rc(PT)	T	TN
Ø20	8	M5X0.8	M8X1.25	5.5	10.5	9 Depth 7	M5X0.8	4.5	18.5
Ø25	10	M6X1.0	M10X1.25	5.5	11	9 Depth 7	M5X0.8	5	22.5

Both End Tapped Type (两端螺孔式) (A)



Unit : mm

Bore Size (缸径)	G	Q ₁	ØQ ₂	R
Ø20	7	M6×1.0	9	10
Ø25	7	M6×1.0	9	10

标准薄型气缸

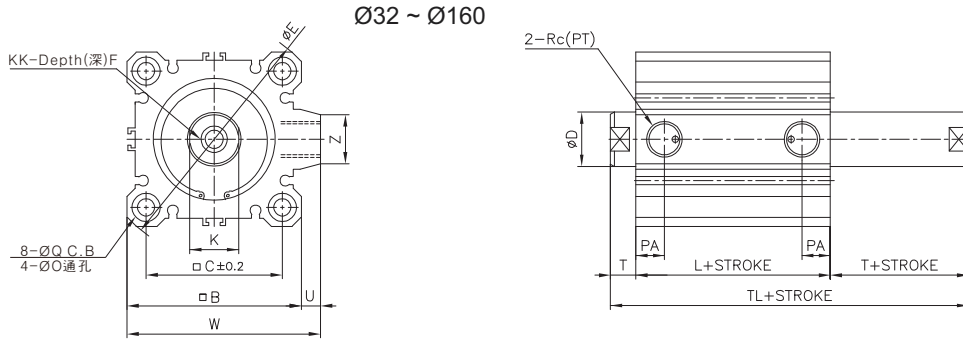
Compact Standard Cylinder

TCQ2W, TCDQ2W (Ø32~Ø160) Series

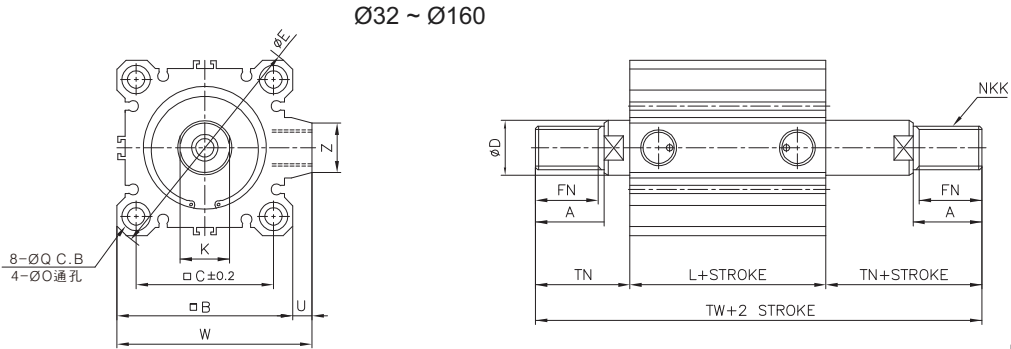
Dimensions(mm)(外型尺寸图(毫米))

Double Acting Double Rod (双动双活塞杆) TCQ2W-D/TCDQ2W-D

Rod End-Female Thread (Standard)
杆端内螺纹(标准)



Rod End-Male Thread
杆端外螺纹

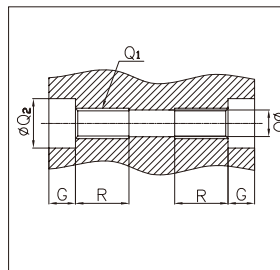


Unit : mm

Bore size (缸径)	Stroke (行程)	Without Magnet(无磁环) (TCQ2W)			With Magnet(有磁环) (TCDQ2W)			A	B	C	ØD	ØE	F	FN	K	KK	NKK	ØO	PA
		L	TL	TW	L	TL	TW												
Ø32	5~50	30.5	44.5	87.5	40.5	54.5	97.5	23.5	45	34	16	60	13	20.5	14	M8X1.25	M14X1.5	5.5	10.5
	75,100	40.5	54.5	97.5															
Ø40	5~50	40	54	97	50	64	107	23.5	52	40	16	69	13	20.5	14	M8X1.25	M14X1.5	5.5	12
	75,100	50	64	107															
Ø50	5~50	40.5	56.5	107.5	50.5	66.5	117.5	28.5	64	50	20	86	15	26	18	M10X1.5	M18X1.5	6.8	10.5
	75,100	50.5	66.5	117.5															
Ø63	5~50	42	58	109	52	68	119	28.5	77	60	20	103	15	26	18	M10X1.5	M18X1.5	9	15
	75,100	52	68	119															
Ø80	5~50	51	71	138	61	81	148	35.5	98	77	25	132	21	32.5	22	M16X2.0	M22X1.5	11	18
	75,100	61	81	148															
Ø100	5~50	60.5	84.5	147.5	70.5	94.5	157.5	35.5	117	94	30	156	27	32.5	27	M20X2.5	M26X1.5	11	23
	75,100	70.5	94.5	157.5															
Ø125	5~100	83	115	199	83	115	199	45	142	114	35	190	30	42	30	M22X2.5	M30X1.5	12.5	24.5
Ø140	5~100	83	115	199	83	115	199	45	158	128	35	210	30	42	30	M22X2.5	M30X1.5	12.5	24.5
Ø160	5~100	91	125	219	91	125	219	50	178	144	40	238	33	47	36	M24X3.0	M36X1.5	14.5	27.5

Bore size (缸径)	ØQ	Rc(PT)	T	TN	U	W	Z
Ø32	9 Depth 7	Rc(PT)1/8	7	28.5	4.5	49.5	14
Ø40	9 Depth 7	Rc(PT)1/8	7	28.5	5	57	14
Ø50	11 Depth 8	Rc(PT)1/4	8	33.5	7	71	18
Ø63	14 Depth 10.5	Rc(PT)1/4	8	33.5	7	84	18
Ø80	17.5 Depth 13.5	Rc(PT)3/8	10	43.5	6	104	22
Ø100	17.5 Depth 13.5	Rc(PT)3/8	12	43.5	6.5	123.5	22
Ø125	21.2 Depth 18.4	Rc(PT)3/8	16	58	11	153	32
Ø140	21.2 Depth 18.4	Rc(PT)3/8	16	58	10	168	32
Ø160	24.2 Depth 21.2	Rc(PT)3/8	17	64	10	188	32

Both End Tapped Type (两端螺孔式) (A)



Bore size	G	Q ₁	ØQ ₂	R
Ø32	7	M6X1.0	9	10
Ø40	7	M6X1.0	9	10
Ø50	8	M8X1.25	11	14
Ø63	10.5	M10X1.50	14	18
Ø80	13.5	M12X1.75	17.5	22
Ø100	13.5	M12X1.75	17.5	22
Ø125	18.4	M14X2.0	21.2	25
Ø140	18.4	M14X2.0	21.2	25
Ø160	21.2	M16X2.0	24.2	28

标准型薄型气缸 Compact Standard Cylinder

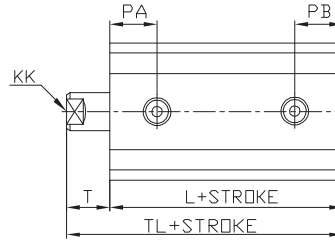
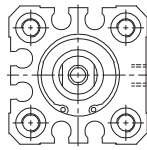
TCQ2S, TCDQ2S (Ø32~Ø125) Series

Dimensions(mm)(外形尺寸图(毫米))

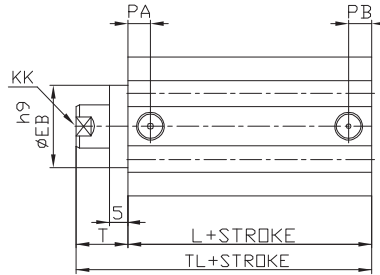
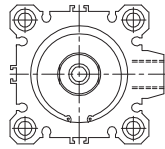
Anti-lateral Load Cylinder (耐横向负载型) TCQ2S/TCDQ2S

Rod End-Female Thread (Standard)
杆端内螺纹(标准)

Ø12 ~ Ø20

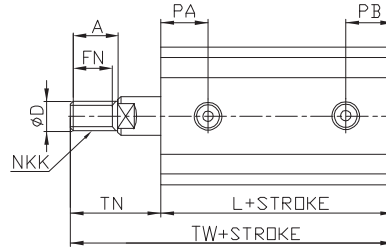
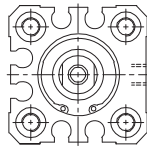


Ø25 ~ Ø125

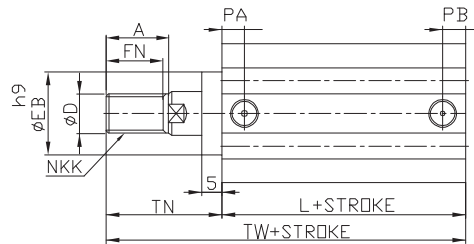
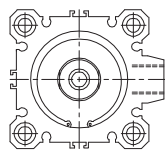


Rod End-Male Thread

杆端外螺纹
Ø12 ~ Ø20



Ø25 ~ Ø125



Unit : mm

Bore Size (缸径)	Stroke (行程)	A	ØD	ØEB	FN	L	KK	NKK	PA	PB	T	TL	TW	TN
Ø12	5~30	10.5	6	-	9	38	M3X0.5	M5X0.8	10	10	13.5	51.5	62	24
Ø16	5~30	12	8	-	10	40.5	M4X0.7	M6X1.0	10	10	13.5	54	66	25.5
Ø20	5~50	14	10	-	12	41.5	M5X0.8	M8X1.25	10.5	10.5	14.5	56	70	28.5
Ø25	5~50	17.5	12	17	15	42.5	M6X1.0	M10X1.25	11	11	15	57.5	75	32.5
Ø32	5~100	23.5	16	22	20.5	43	M8X1.25	M14X1.5	12.5	12.5	17	60	81.5	38.5
Ø40	5~100	23.5	16	28	20.5	49.5	M8X1.25	M14X1.5	14	14	17	66.5	88	38.5
Ø50	5~100	28.5	20	35	26	50.5	M10X1.5	M18X1.5	14	14	18	68.5	94	43.5
Ø63	5~100	28.5	20	35	26	56	M10X1.5	M18X1.5	16.5	16.5	18	74	99.5	43.5
Ø80	5~100	35.5	25	43	32.5	63.5	M16X2.0	M22X1.5	19	19	20	83.5	117	53.5
Ø100	5~100	35.5	30	59	32.5	73	M20X2.5	M26X1.5	23	23	22	95	126.5	53.5
Ø125	5~300	45	35	35	42	83	M22X2.5	M30X1.5	24.5	24.5	16	99	141	58

* Ø125 type and standard type have the same dimensions. (缸径Ø125与标准型尺寸一致)

* For dimensions not shown in those figures, refer to the standard type. (未标注的尺寸请参考标准型)

标准型薄型气缸

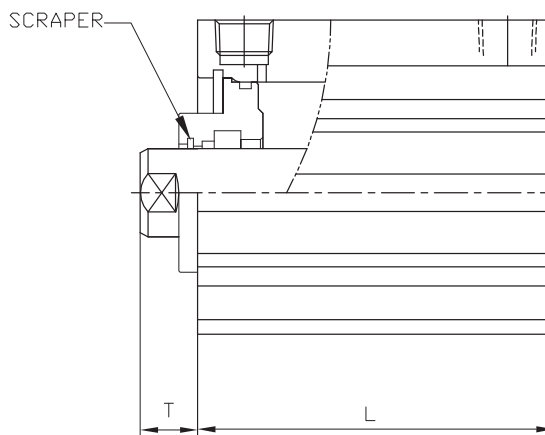
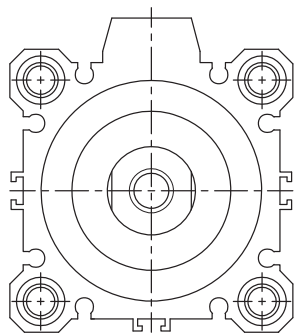
Compact Standard Cylinder

TCQ2M, TCDQ2M (Ø12~Ø125) Series

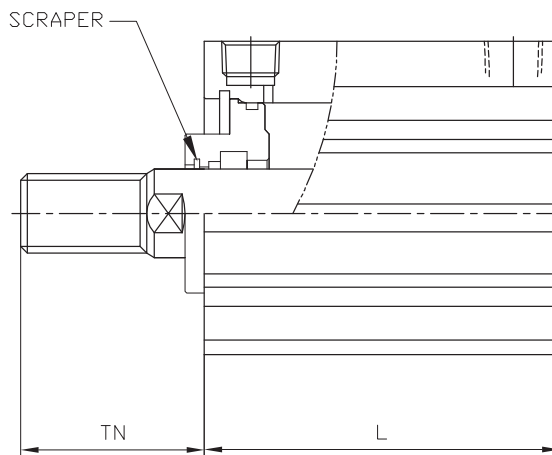
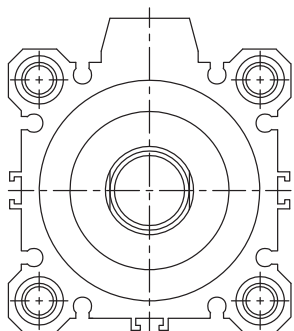
Dimensions(mm)(外形尺寸图(毫米))

Scraper Cylinder (Ø32 ~ Ø80)(混入物刮除式) TCQ2M/TCDQ2M

Rod End-Female Thread (Standard)
杆端内螺纹(标准)



Rod End-Male Thread
杆端外螺纹



Unit : mm

Bore Size (缸径)	Stroke (行程)	Without Magnet (无磁环) (TCQ2M)	With Magnet (有磁环) (TCDQ2M)	T	TN
		L			
Ø32	5~50	23	33	7	28.5
	75,100	33			
Ø40	5~50	29.5	39.5	12	33.5
	75,100	39.5			
Ø50	5~50	30.5	40.5	13	38.5
	75,100	40.5			
Ø63	5~50	36	46	13	38.5
	75,100	46			
Ø80	5~50	43.5	53.5	15	48.5
	75,100	53.5			

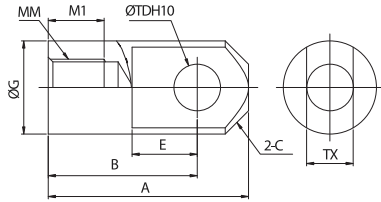
*For dimensions not shown in those figures, refer to the standard type.
(未标注的尺寸请参考标准型)

标准薄型气缸配件 Compact Standard Cylinder Accessory

TCQ2, TCDQ2(Ø12~Ø100) Series

Dimensions(mm)(外形尺寸图(毫米))

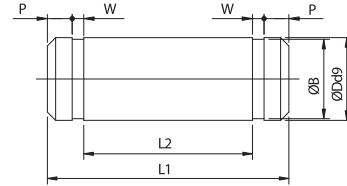
Single Knuckle Joint (I型单肘接头)



Unit : mm

Bore Size (缸径)	A	B	C	E	ØG	MM	MI	ØTDH10	TX
Ø12	21.5	16	2.5	7	12	M5X0.8	6	5 ^{+0.048} ₀	5 ^{-0.2} _{-0.4}
Ø16	32	25	3	14	14	M6X1.0	8	5 ^{+0.048} ₀	6.4 ^{-0.2} _{-0.4}
Ø20	34	25	4	11.5	18	M8X1.25	8.5	8 ^{+0.058} ₀	8 ^{-0.2} _{-0.4}
Ø25	41	30	5	14	23	M10X1.25	10.5	10 ^{+0.058} ₀	10 ^{-0.2} _{-0.4}
Ø32,40	42	30	6	14	29	M14X1.5	14	10 ^{+0.058} ₀	18 ^{-0.3} _{-0.5}
Ø50,63	56	40	6.5	20	36	M18X1.5	18	14 ^{+0.070} ₀	22 ^{-0.3} _{-0.5}
Ø80	71	50	8	27	38	M22X1.5	21	18 ^{+0.070} ₀	28 ^{-0.3} _{-0.5}
Ø100	79	55	10	31	44	M26X1.5	21	22 ^{+0.084} ₀	32 ^{-0.3} _{-0.5}

Knuckle Joint Pin (接头用销子)



Unit : mm

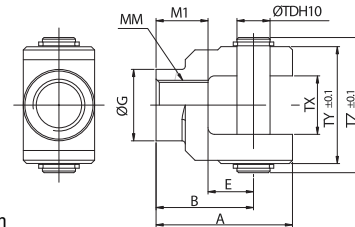
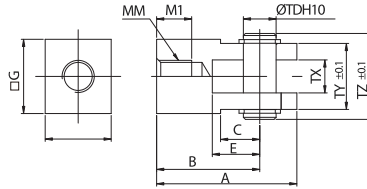
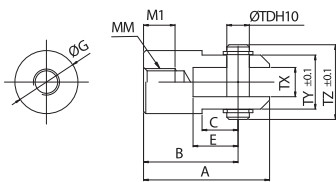
Bore size (缸径)	ØDd9	L1	L2	P	W	B
Ø12	5 ^{-0.03} _{-0.06}	14.6	10.2	1.5	M5X0.8	6
Ø16	5 ^{-0.03} _{-0.06}	16.6	12.2	1.5	M6X1.0	8
Ø20	8 ^{-0.04} _{-0.076}	21	16.2	1.5	M8X1.25	8.5
Ø25	10 ^{-0.04} _{-0.076}	25.6	20.2	1.55	M10X1.25	10.5
Ø32,40	10 ^{-0.04} _{-0.076}	41.6	36.2	1.55	M14X1.5	14
Ø50,63	14 ^{-0.05} _{-0.076}	50.6	44.2	2.05	M18X1.5	18
Ø80	18 ^{-0.05} _{-0.093}	64	56.2	2.55	M22X1.5	21
Ø100	22 ^{-0.065} _{-0.117}	72	64.2	2.55	M26X1.5	21

Double Knuckle Joint (Y型双肘接头)

Ø12~Ø16

Ø20, Ø25

Ø32~Ø100



Unit : mm

Bore Size (缸径)	A	B	C	E	ØG(□G)	MM	MI	ØTDH10	TX	TY	TZ
Ø12	21.5	16	6	7	Ø12	M5X0.8	6	5 ^{+0.048} ₀	5 ^{-0.4} _{-0.2}	10	14.6
Ø16	28	21	8	10	Ø16	M6X1.0	7	5 ^{+0.048} ₀	6.4 ^{-0.4} _{-0.2}	12	16.6
Ø20	34	25	9.5	11.5	□18	M8X1.25	8.5	8 ^{+0.058} ₀	8 ^{-0.4} _{-0.2}	16	21
Ø25	41	30	14	14	□22	M10X1.25	10.5	10 ^{+0.058} ₀	10 ^{-0.4} _{-0.2}	20	25.6
Ø32,40	42	30	-	14	Ø22	M14X1.5	16	10 ^{+0.058} ₀	18 ^{-0.5} _{-0.3}	36	41.6
Ø50,63	56	40	-	20	Ø28	M18X1.5	20	14 ^{+0.070} ₀	22 ^{-0.5} _{-0.3}	44	50.6
Ø80	71	50	-	27	Ø38	M22X1.5	23	18 ^{+0.070} ₀	28 ^{-0.5} _{-0.3}	56	64
Ø100	79	55	-	31	Ø44	M26X1.5	24	22 ^{+0.084} ₀	32 ^{-0.5} _{-0.3}	64	72

Part No. of Mounting(安装附件型号)

Bore(缸径)		Ø12	Ø16	Ø20	Ø25	Ø32,40	Ø50,63	Ø80	Ø100
Accessory 附件	L	TCQ2-L012	TCQ2-L016	TCQ2-L020	TCQ2-L025	TCQ2-L032	TCQ2-L050	TCQ2-L080	TCQ2-L100
	F	TCQ2-F012	TCQ2-F016	TCQ2-F020	TCQ2-F025	TCQ2-F032	TCQ2-F050	TCQ2-F080	TCQ2-F100
	G	TCQ2-G012	TCQ2-G016	TCQ2-G020	TCQ2-G025	TCQ2-G032	TCQ2-G050	TCQ2-G080	TCQ2-G100
	D	TCQ2-D012	TCQ2-D016	TCQ2-D020	TCQ2-D025	TCQ2-D032	TCQ2-D050	TCQ2-D080	TCQ2-D100
Accessory 连接附件	I	TCQ2-012I	TCQ2-016I	TCQ2-020I	TCQ2-025I	TCQ2-032I	TCQ2-050I	TCQ2-080I	TCQ2-100I
	Y	TCQ2-012Y	TCQ2-016Y	TCQ2-020Y	TCQ2-025Y	TCQ2-022Y	TCQ2-050Y	TCQ2-080Y	TCQ2-100Y

标准薄型气缸/特殊型

Compact Standard Cylinder /Special Order

TCQ2, TCDQ2(Ø20~Ø125)Series

Order Example (订购举例)

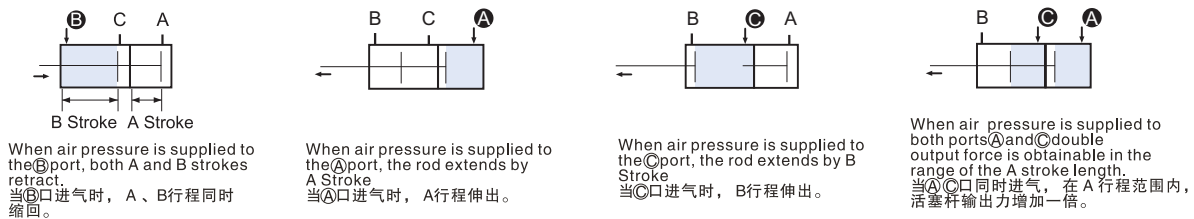
Dual Stroke Cylinder/Single Rod Type (双行程气缸/单活塞杆型)

TCDQ2B50-50+(75-50)Y-M9BS-XC11

① ② ③ ④ ⑤ ⑥ ⑦ ⑧

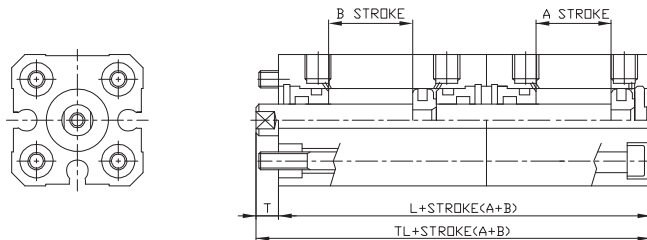
- ① Magnet 有无磁环
- ② Mounting 附件安装方式
- ③ Bore 缸径
- ④ Stroke A 行程A
- ⑤ Stroke B- stroke A 行程B-行程A
- ⑥ Accessory 附件
- ⑦ Auto Switch 磁性开关
- ⑧ No.of Auto Switch 磁性开关数量

Symbol (符号)

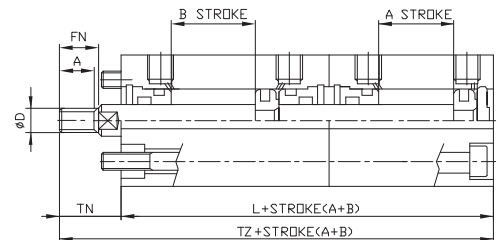


Dimensions(mm)(外形尺寸图(毫米))

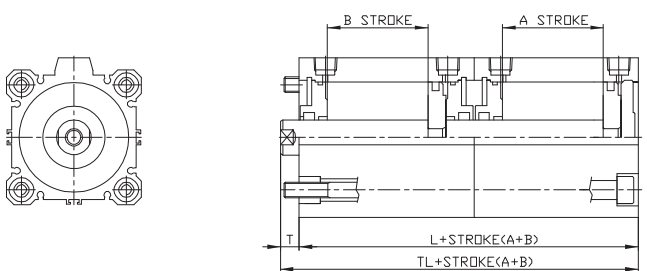
Rod End-Female Thread (Standard)(Ø20 ~ Ø25)
杆端内螺纹(标准)



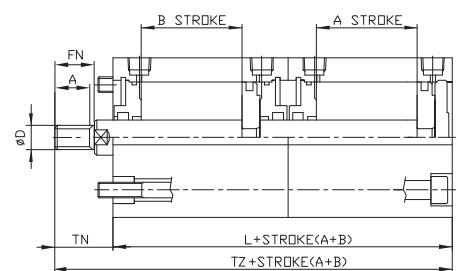
Rod End-Male Thread (Ø20 ~ Ø25)
杆端外螺纹



Rod End-Female Thread (Standard)(Ø32 ~ Ø125)
杆端内螺纹(标准)



Rod End-Male Thread (Ø32 ~ Ø125)
杆端外螺纹



Bore Size (缸径)	Stroke (行程)	Without Magnet(无磁环)			With Magnet(有磁环)			A	ØD	FN	T	TN
		L	TL	TZ	L	TL	TZ					
Ø20	5~100	45.5	54.5	82.5	69.5	78.5	106.5	14	10	12	4.5	18.5
	Ø25	5~100	51.5	61.5	96.5	71.5	81.5	116.5	17.5	12	15	5
Ø32	5~50	53.5	67.5	110.5	73.5	87.5	130.5	23.5	16	20.5	7	28.5
	75,100	73.5	87.5	130.5								
Ø40	5~50	69.5	83.5	126.5	89.5	103.5	146.5	23.5	16	20.5	7	28.5
	75,100	89.5	103.5	146.5								
Ø50	5~50	71	87	138	91	107	158	28.5	20	26	8	33.5
	75,100	91	107	158								
Ø63	5~50	78	94	145	98	114	165	28.5	20	26	8	33.5
	75,100	98	114	165								
Ø80	5~50	94.5	114.5	181.5	114.5	134.5	201.5	35.5	25	32.5	10	43.5
	75,100	114.5	134.5	201.5								
Ø100	5~50	113.5	137.5	200.5	133.5	157.5	220.5	35.5	30	32.5	12	43.5
	75,100	133.5	157.5	220.5								
Ø125	5~100	166	198	282	166	198	282	45	35	42	16	58

* For dimensions not shown in those figures, refer to the standard type.
(未标注的尺寸请参考标准型)

标准薄型气缸/特殊型 Compact Standard Cylinder /Special Order

TCQ2, TCDQ2(Ø20~Ø125) Series

Order Example (订购举例)

Dual Stroke Cylinder/Double Rod Type (双行程气缸/双活塞杆型)

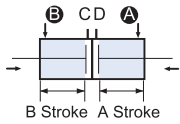
TCDQ2B50-50Y+75Y-M9BS-XC10

① ② ③ ④ ⑤ ⑥ ⑦ ⑧

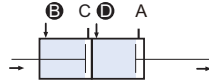
- ① Magnet 有无磁环
- ② Mounting 附件安装方式
- ③ Bore 缸径
- ④ Stroke A 行程A
- ⑤ Stroke B 行程B
- ⑥ Accessory 附件
- ⑦ Auto Switch 磁性开关
- ⑧ No. of Auto Switch 磁性开关数量

Symbol (符号)

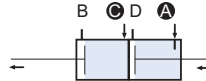
Two cylinders are constructed as one cylinder in a back-to-back configuration allowing the cylinder stroke to be controlled in three steps.
两个气缸以背靠背形式组成一个气缸，使气缸行程分三步控制。



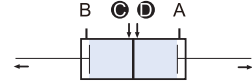
When air pressure is supplied to ports A and B, both A and B strokes retract.
当A、B两口同时进气时，A、B行程同时缩回。



When air pressure is supplied to ports B and C, A stroke extends.
当B、C两口同时进气时，伸出A行程。



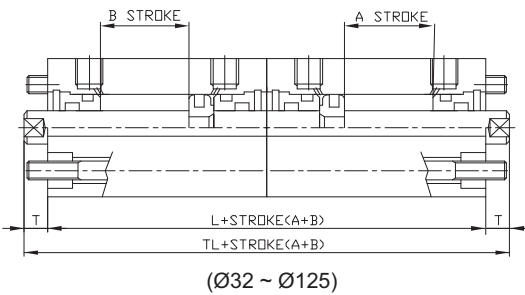
When air pressure is supplied to ports A and C, B stroke extends.
当A、C两口同时进气时，伸出B行程。



When air pressure is supplied to ports C and D, both stroke A and B out stroke.
当C、D两口同时进气时，同时伸出A、B行程。

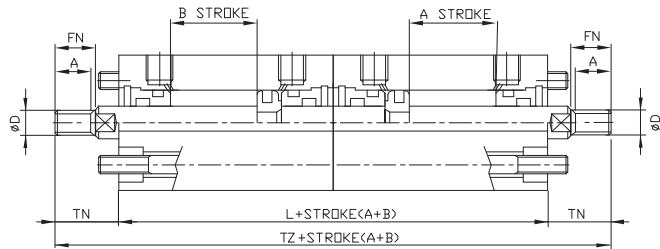
Dimensions(mm)(外型尺寸图(毫米))

Rod End-Female Thread (Standard) 杆端内螺纹(标准)
(Ø20 ~ Ø25)

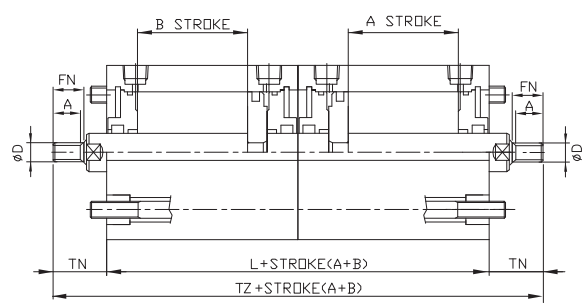
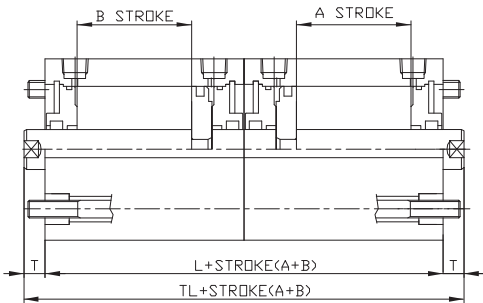


(Ø32 ~ Ø125)

Rod End-Male Thread 杆端外螺纹
(Ø20 ~ Ø25)



(Ø32 ~ Ø125)



Bore Size (缸径)	Stroke (行程)	Without Magnet(无磁环)			With Magnet(有磁环)			A	ØD	FN	T	TN
		L	TL	TZ	L	TL	TZ					
Ø20	5~100	45.5	54.5	82.5	69.5	78.5	106.5	14	10	12	4.5	18.5
	5~100	51.5	61.5	96.5	71.5	81.5	116.5	17.5	12	15	5	22.5
Ø32	5~50	53.5	67.5	110.5	73.5	87.5	130.5	23.5	16	20.5	7	28.5
	75,100	73.5	87.5	130.5								
Ø40	5~50	69.5	83.5	126.5	89.5	103.5	146.5	23.5	16	20.5	7	28.5
	75,100	89.5	103.5	146.5								
Ø50	5~50	71	87	138	91	107	158	28.5	20	26	8	33.5
	75,100	91	107	158								
Ø63	5~50	78	94	145	98	114	165	28.5	20	26	8	33.5
	75,100	98	114	165								
Ø80	5~50	94.5	114.5	181.5	114.5	134.5	201.5	35.5	25	32.5	10	43.5
	75,100	114.5	134.5	201.5								
Ø100	5~50	113.5	137.5	200.5	133.5	157.5	220.5	35.5	30	32.5	12	43.5
	75,100	133.5	157.5	220.5								
Ø125	5~100	166	198	282	166	198	282	45	35	42	16	58

* For dimensions not shown in those figures, refer to the standard type.
(未标注的尺寸请参考标准型)

标准薄型气缸/特殊型

Compact Standard Cylinder /Special Order

TCQ2, TCDQ2(Ø20~Ø125)Series

Order Example (订购举例)

Adjustable Stroke Cylinder (可调节行程气缸)

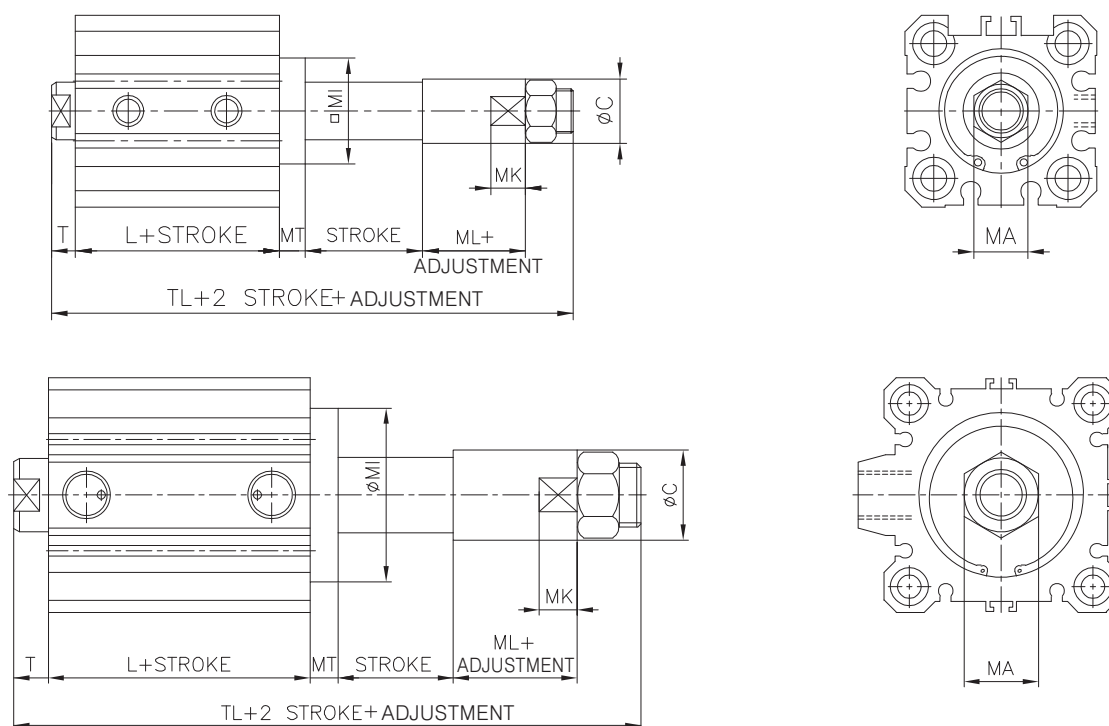
Extension Adjustable Type 伸出调整型

TC**DQ2**B40-100BY-M9BS-**XC8**

① ② ③ ④ ⑤ ⑥ ⑦

- ① Magnet 有无磁环 ⑥ Auto Switch 磁性开关
 ② Mounting 附件安装方式 ⑦ No. of Auto Switch 磁性开关数量
 ③ Bore 缸径 Stroke Adjust 行程调节
 ④ Stroke 行程 B: Stroke adjusting range 0~20mm
 ⑤ Accessory 附件 行程可调节范围为0~20mm

Dimensions(mm)(外形尺寸图(毫米))



Unit : mm

Bore Size(缸径)	ØC	L	MI	MT	MK	ML	MT	T	TL
Ø20	20	26	□36	8	10	12.5	8	4.5	61
Ø25	20	29	□36	8	10	12.5	8	5	64.5
Ø32	27	30.5	Ø38	6	14	16	6	7	72.5
Ø40	27	40	Ø46	6	14	16	6	7	82
Ø50	35	40.5	Ø57	8	16	20	8	8	91.5
Ø63	35	42	Ø68	10	16	20	10	8	95
Ø80	48	51	Ø90	12	20	28	12	10	119
Ø100	48	60.5	Ø110	14	20	28	14	12	134.5
Ø125	63	83	-	-	15	35	16	16	157

* For dimensions not shown in those figures, refer to the standard type.
 (未标注的尺寸请参考标准型)