

# 标准扁平吸盘

## Standard Flat Vacuum Pad

### SU Series



#### Features(特征)

- Standard flat vacuum pad.
- Suitable for concave and convex objects.
- Suitable for flat and smooth surface objects.
- Suitable for a little bending objects.
- 标准扁平吸盘。
- 适用于凹凸物体的传送。
- 适合所有表面光滑平整和有点弯曲的产品的传送。

#### How To Order(型号表示方法)

##### ① Model (型号)

SU1.5X	φ1.5	SU10	φ10
SU2	φ2	SU15	φ15
SU2X	φ2	SU20	φ20
SU3	φ3	SU25	φ25
SU4	φ4	SU30	φ30
SU4X	φ4	SU40	φ40
SU6	φ6	SU50	φ50
SU8	φ8	SU80	φ80

SU30 N 18M – EH – KI1810–A16 – BH–G1/8

① ② ③ ④ ⑤ ⑥

##### ② Material(Shore Hardness) (材质)(肖氏硬度)

N	NBR(55°)(丁腈橡胶55°)
S	Silicone(50°)(导电特殊材质50°)
WS	White Silicone(50°)(白硅胶50°)
CS	Conductive(Special Mat)(50°)(导电特殊材质50°)

##### ④ Valve(锥阀)

EH	Vacuum Efficiency Valve(双流式控制阀) (SU20,SU25,SU30,SU40,SU50)
-	No

##### ③ Connection thread (连接螺纹)

M2.5–M	M2.5 Male Thread(外螺纹)(SU2,SU3)
M5–M	M5 Male Thread(外螺纹) (SU2,SU3,SU4,SU6,SU8,SU10,SU15)
18–M	G1/8 Male Thread (SU40)
14–M	G1/4 Male Thread (SU40,SU50)
38–M	G3/8 Male Thread (SU50)
M5/18–MF	M5 Female Thread And G1/8 Male Thread (SU20,SU25,SU30)
M5/18–MFI*	M5 Female Thread And G1/8 Male Thread (SU20,SU25,SU30)
5xM5F	5 x M5 Female Thread (SU20,SU25,SU30)
18–F	G1/8 Female Thread (SU30,SU40,SU50,SU80)
5x18F	5 x G1/8 Female Thread (SU40,SU50)
8	φ8 Inner Hole SU80
18–FA*	G1/8 Female Hthread (SU40)

Remark:SU40 SU50 fittings are including mesh filter.Only for silicone material.  
\*硅材质吸盘 参考SU40 SU50内部装有网状过滤器

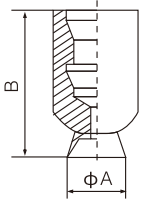
⑤ Spring Plunger(弹簧缓冲行程)		⑥ Ball Joint (球状接头)	
Model(型号)	Buffer Stroke(mm) (缓冲行程)		
KE510–A12, KE510–Y–A12	10	-	
KE520–A12, KE20–Y–A12	20		
KI506–R–A8, KI506–B–A8, KI506–E–A8, KI506–S–A8	06		
KI510–R–A8, KI510–B–A8, KI510–E–A8, KI510–S–A8	10		
KI525–R–A8, KI525–B–A8, KI525–E–A8, KI525–S–A8	25		
KI507–V–A10	7		
KI515–V–A10	15		
KI520–V–A10	20		
KE1810–A16, KE1810–L–A14, KE1810–V–A16	10		BH–G1/8
KE1820–A16, KE1820–L–A14, KE1820–V–A16	20		
KE1830–A16, KE1830–L–A14, KE1830–V–A16	30		
KE1850–A16, KE1850–L–A14, KE1850–V–A16*	50		
KI1810–A16, KI1810–L–A16, KI1810–V–A16	10		
KI1820, KI1820–L–A16, KI1820–V–A16*	20		
KI1830–A16, KI1830–L–A16, KI1830–V–A16	30		
KI1850–A16, KI1850–L–A16, KI1850–V–A16*	50		

#### Recommended(Max.)Lifting Force(N)(不同真空度的最大传力)

Model (型号)	Volume (内部容量)cm <sup>3</sup>	Vertical Lifting Force (垂直传力)(N)			Parallel Lifting Force (水平传力)(N)		
		-20kPa	-60kPa	-90kPa	-20kPa	-60kPa	-90kPa
SU1.5X	0.0015	0.0077	0.029	0.04	-	-	-
SU2	0.0025	0.03	0.97	0.148	-	-	-
SU2X	0.0025	0.03	0.97	0.148	-	-	-
SU3	0.005	0.089	0.395	0.59	-	-	-
SU4	0.03	0.198	0.885	1.275	0.198	0.78	1
SU4X	0.03	0.198	0.885	1.275	0.198	0.78	1
SU6	0.05	0.5	1.68	2.5	0.295	1.48	1.98
SU8	0.1	1	2.55	3.8	1	2.85	3.35
SU10	0.18	1.48	4.4	6.85	1.5	4.4	4.9
SU15	0.5	3.2	8.5	11.5	3.5	5.4	5.9
SU20	1	5.9	12.2	16	5.9	8.8	9.8
SU25	1.5	9	20.2	19.5	6.88	9.2	10.2
SU30	2	13	25	33	7.8	9.8	11
SU40	5.5	20	37.5	60	13.8	22	27.5
SU50	12	35.5	74	95	20	37	44
SU80	32	76	194	247	44	124.5	166

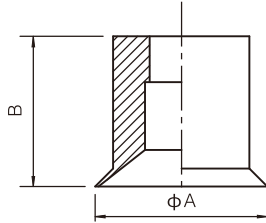
Dimensions (mm)(外形尺寸(毫米))

▼ SU1.5X~ SU4X



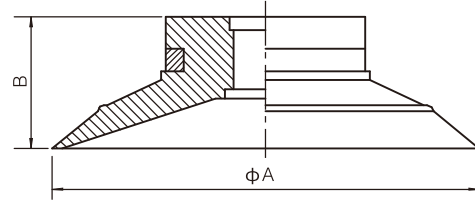
Model(型号)	ΦA	B
SU1.5X	1.9	12
SU2X	2.6	12
SU4X	4.6	12

▼ SU2~ SU15

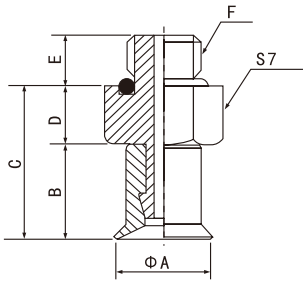


Model(型号)	ΦA	B	Model(型号)	ΦA	B
SU2	2.6	3.5	SU6	7	6.5
SU3	3.8	4.5	SU8	9	7
SU4	5	6.1	-	-	-

▼ SU20~ SU50

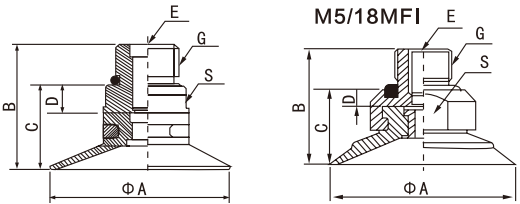


Model(型号)	ΦA	B	Model(型号)	ΦA	B
SU10	11	10.5	SU30	32	9.5
SU15	16.5	11	SU40	42	13
SU20	22	8	SU50	53	17.5
SU25	27	9			



Male(female) Thread Connection(mm)(外(内)螺纹连接(mm))

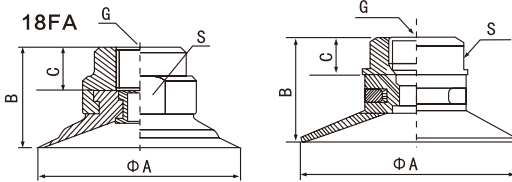
Model(型号)	ΦA	B	C	D	E	F
SU2-M2.5M/M5M	2.6	3.5	6/8.1	2.5/4.6	3/4.2	M2.5/M5
SU3-M2.5M/M5M	3.8	4.5	7/9.1	2.4/4.6	3/4.2	M2.5/M5
SU4-M5M	5	6.1	10.1	4	3.5	M5
SU6-M5M	7	6.5	10.5	4	3.5	M5
SU8-M5M	9	7	11	4	3.5	M5
SU10-M5M	11	10.5	15.5	5	3.5	M5
SU15-M5M	16.5	11.5	16	5	3.5	M5



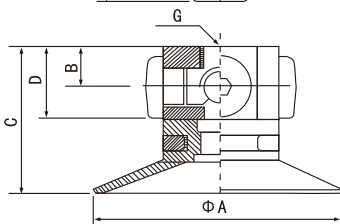
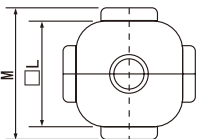
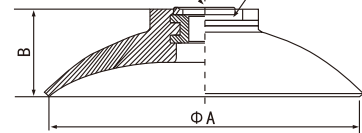
Female Thread Connection(mm)(内螺纹连接(mm))

Model(型号)	ΦA	B	C	D	E	G	S
SU20-M5/18MF	22	15.5	9.5	1.5	M5	G1/8	S12
SU20-M5/18MFI*	22	18	11	3	M5	G1/8	S16
SU25-M5/18MF	27	16.5	10.5	1.5	M5	G1/8	S12
SU25-M5/18MFI*	27	19	12	3	M5	G1/8	S16
SU30-M5/18M	32	17	11	1.5	M5	G1/8	S12
SU30-M5/18MFI*	32	16.5	12.5	3	M5	G1/8	S16
SU40-18M	42	25	18	5	-	G1/8	S17
SU40-14M	42	28	19	6	-	G1/4	S17
SU50-14M	53	32.5	23.5	6	-	G1/4	S24
SU50-38M	53	33.5	23.5	6	-	G3/8	S24
SU20-18F	22	16	8	-	-	G1/8	S15
SU25-18F	27	17	8	-	-	G1/8	S15
SU30-18F	32	17.5	-	-	-	G1/8	S15
SU40-18F	42	21	8	-	-	G1/8	S17
SU40-18FA*	42	22	9	-	-	G1/8	S21
SU50-18F	53	26.5	9	-	-	G1/8	S24
SU80-18F	78	21.5	-	-	-	G1/8	S19
SU80-8	78	21.5	-	-	-	Φ8	S19

\*Only for S (Silicone) material(仅适用于硅材质)



SU80



Female Thread Connection (mm)(内螺纹连接(mm))

Model(型号)	ΦA	B	C	D	G	□L	M
SU20-5 × M5F	22	5	17	9	5 × M5	15	22
SU25-5 × M5F	27	5	18	9	5 × M5	15	22
SU30-5 × M5F	32	5	18.5	9	5 × M5	15	22
SU40-5 × 18F	42	10	31	18	5 × G1/8	22	30
SU50-5 × 18F	53	10	35.5	18	5 × G1/8	28	36