



Features(特征)

- Various sizes, suitable for workpiece with different shapes and sizes
- Various materials are available, suitable for workpiece with different materials and different working conditions
- Deep structure to avoid bulging of the workpiece, suitable for cake-shaped and ball-shaped workpiece
- 尺寸型号齐全，适合不同形状和尺寸的工件
- 吸盘有多种材料可供选择，以适应不同材质的工件以及不同的工作环境
- 深形结构能避免工件上的凸起，适合块状及球状工件

Applications(适用范围)

- Food industry, cake-shaped objects e.g. chocolate, candies and so on
- Ball-shaped objects
- 食品行业，块状物品，如巧克力、糖果
- 球状物体

Model(型号规格)

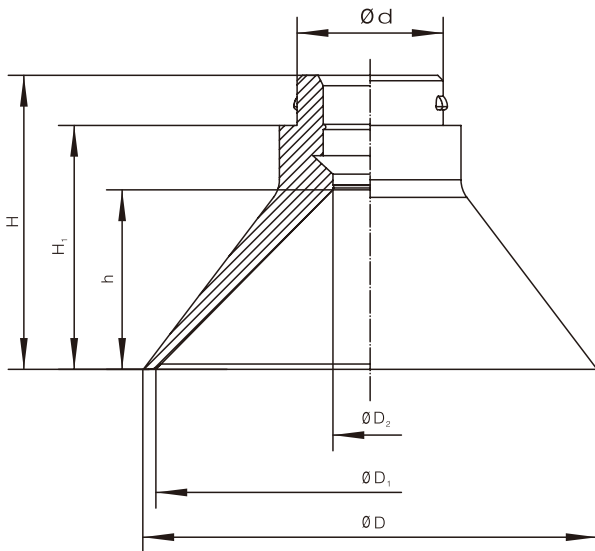
Model(型号)	Diameter(mm)(直径)	Material(材质)
SD	10	N-NBR (Black) (黑色)
	16	S-Silicone(White) (S-硅橡胶 (白色))
	25	U-Urethane Rubber (U-聚氨酯橡胶)
	40	F-Fluorine Rubber (氟化橡胶)

△SD10-N

Technical Parameters (性能参数)

Model(型号)	Pull-out Force(N) (拉脱力)(N) -60kPa	Inner Volume(cm ³) (内部体积)	Min. Curve Radius of Workpiece(cm) (工件最小曲率半径)	Recommended Tube Diameter(mm) (推荐软管直径)
SD10	6.4	0.25	5.6	4
SD16	16.5	0.6	10	4
SD25	40	1.2	18	4
SD40	98	8.5	28	4

Dimensions(mm)(外形尺寸图(毫米))



Model (型号)	D	D ₁	D ₂	d	H	H ₁	h
SD10-N	12	10	4	13	15	10.7	6
SD16-N	18	16	4	13	16	11.7	7
SD25-N	28	25	4	15	20	15.5	10
SD40-N	43.5	41	7	18	28	23.5	17

SD30-SD100 (Female thread) (内螺纹)