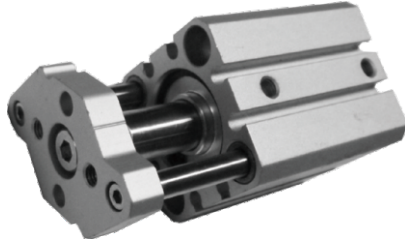


标准薄型气缸

Compact Standard Cylinder

TCQM(Ø12~Ø100) Series



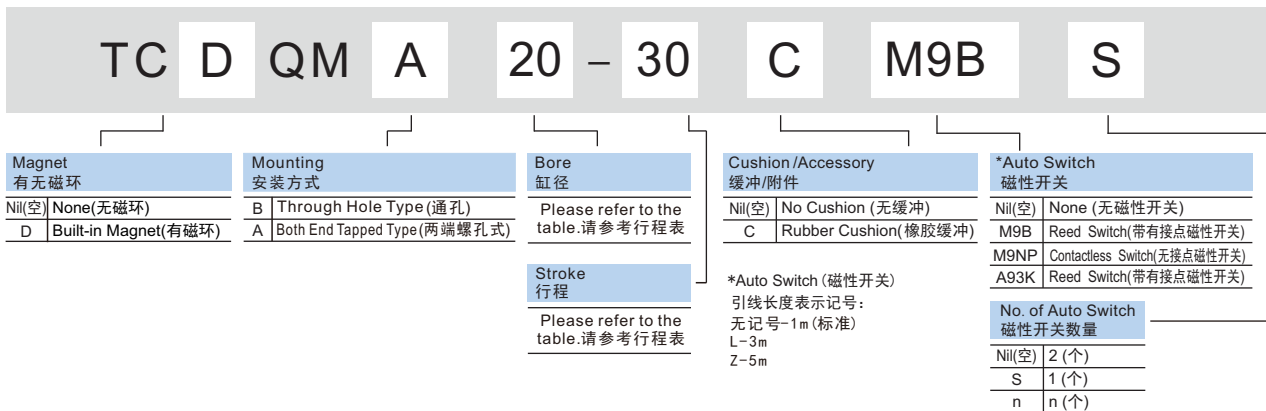
- Lateral load resisting 2 to 4 times compared to compact cylinder TCQM/TCDQM series.
- Non-rotating accuracy ± 0.2 .
- Ideal for clamping, press-in and short stroke condition.
- Installed in a narrow space with a shorter length in axial thrust direction.

Common Specification (共同规格)

Fluid(流体)	Clean Air(洁净空气)
Action(动作形式)	Double Acting(双动) Single Acting(Spring Return)(单动(弹簧压回)) Single Acting(Spring Extended)(单动(弹簧压出))
Proof Press.(保证耐压力)	1.53Mpa
Max. Press.(最高使用压力)	1.02Mpa
Amb.Temp(环境及流体温度)	-10~+70°C(未冻结)
Cushion(缓冲)	None(无) ,Rubber Cushion(橡胶缓冲)
Stroke Tolerance(行程公差)	+1.0 0
Piston Speed(活塞速度)	50~500mm/s
*Lubrication(润滑)	Non-Lube(不需要)
Mounting(安装)	Through Hole(STD)(通孔标准),Both End Tapped(两端内螺纹)

*Please Use Turbine Oil 1st-Grade ISOVG32,If Necessary.(如需要润滑,请用透平1号油ISOVG32)

How To Order (型号表示方法)



Stroke (行程)

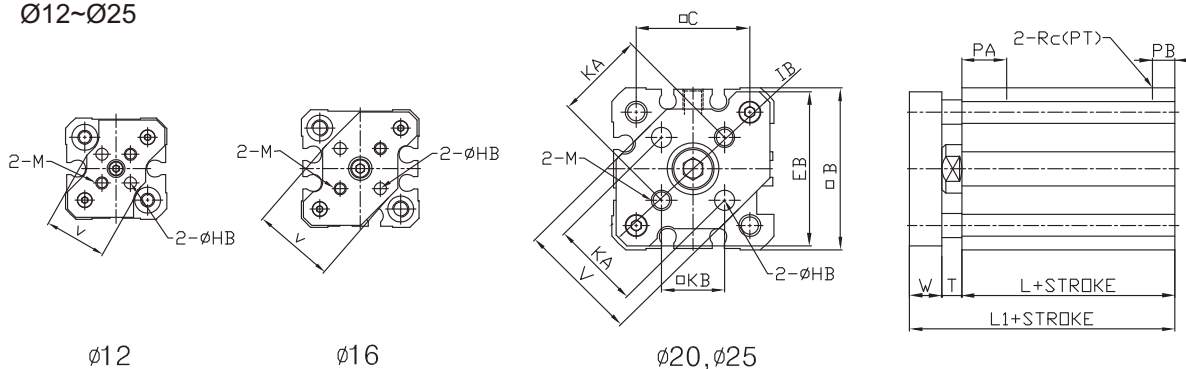
Bore(缸径)	Stroke(行程)
Ø12	5, 10, 15, 20, 25, 30
Ø16	
Ø20	5, 10, 15, 20, 25, 30, 35, 40, 45, 50
Ø25	
Ø32	5, 10, 15, 20, 25, 30, 35, 40, 45, 50, 75, 100
Ø40	
Ø50	
Ø63	5, 10, 15, 20, 25, 30, 35, 40, 45, 50, 75, 100
Ø80	
Ø100	

标准薄型气缸 Compact Standard Cylinder

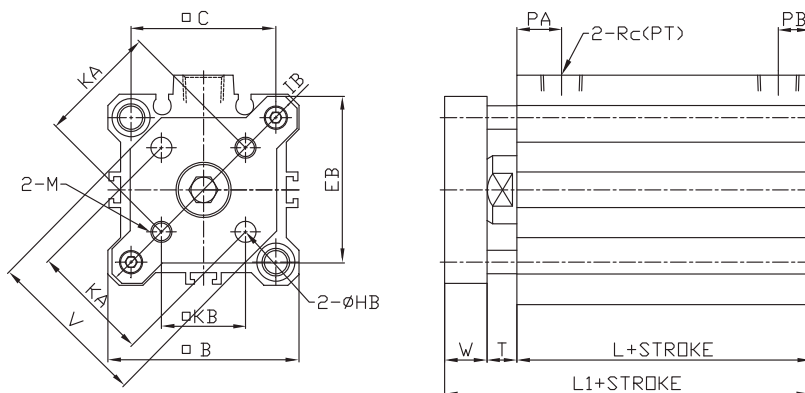
TCQM(Ø12~Ø100) Series

Dimensions(mm)(外形尺寸图(毫米))

Ø12~Ø25



Ø32~Ø100



Unit: mm

Bore size	□B	□C	T	W	Without magnet (TCQM)		With magnet (TCDQM)		EB	KA	V	KB	□IB	ØHB	M	Rc(PT)	PA	PB
					L	L1	L	L1										
Ø12	25	15.5	3.5	6	17	26.5	28	37.5	24	10±0.1	14.9	7.1	31.5	3 ^{+0.2} ₀	M3xP0.5	M5xP0.8	10	5
Ø16	29	20	3.5	6	18.5	28	30.5	40	28	14±0.1	20	9.9	37	3 ^{+0.2} ₀	M3xP0.5	M5xP0.8	10	5.5
Ø20	36	25.5	4.5	8	19.5	32	31.5	44	34	17±0.1	26	12	45.5	4 ^{+0.2} ₀	M4xP0.7	M5xP0.8	10.5	6
Ø25	40	28	5	8	22.5	35.5	32.5	45.5	38	22±0.1	30	15.6	50.5	5 ^{+0.2} ₀	M5xP0.8	M5xP0.8	11	5.5
Ø32	45	34	7	10	23	40	33	50	43	28±0.2	38	19.8	58.5	5 ^{+0.2} ₀	M5xP0.8	1/8"	10.5	7.5
Ø40	52	40	7	10	29.5	46.5	39.5	56.5	50	33±0.2	46	23.3	67.5	5 ^{+0.2} ₀	M5xP0.8	1/8"	12	8.5
Ø50	64	50	8	12	30.5	50.5	40.5	60.5	62	42±0.2	58	29.7	84.5	6 ^{+0.2} ₀	M6xP1.0	1/4"	10.5	10.5
Ø63	77	60	8	12	36	56	46	66	74	50±0.2	69	35.4	100	6 ^{+0.2} ₀	M6xP1.0	1/4"	15	11
Ø80	98	77	10	14	43.5	67.5	53.5	77.5	95	65±0.2	89	46	129	8 ^{+0.2} ₀	M8xP1.25	3/8"	18	12.5
Ø100	117	94	12	16	63	81	63	91	114	80±0.2	113	56.6	153	10 ^{+0.2} ₀	M10xP1.5	3/8"	23	13