

双活塞杆气缸 Dual Rod Cylinder

TN Series

Common Specification (共同规格)



Bore (缸径) (mm)	Ø10	Ø16	Ø20	Ø25	Ø32
Fluid (使用流体)	Filter Air (过滤空气)				
Action (动作方式)	Double Acting (双动)				
Press. Range (使用压力范围)	0.1~1.0Mpa				
Amb.Temp (环境及流体温度)	-10°C~70°C				
Cushion (缓冲)	Rubber (橡胶缓冲)				
*Lubrication (润滑)	Non-Lube (不需要)				
Speed Range (使用速度范围)	30~500mm/s				
Adjustable Stroke (调整行程)	-10~0mm				
Stroke Tolerance (行程公差范围)	+1.0 0				
Non-Rotating Tolerance (不回转精度)	±0.4°				±0.3°
Pipe Size (接管口径) Rc	M5x0.8			PT1/8	

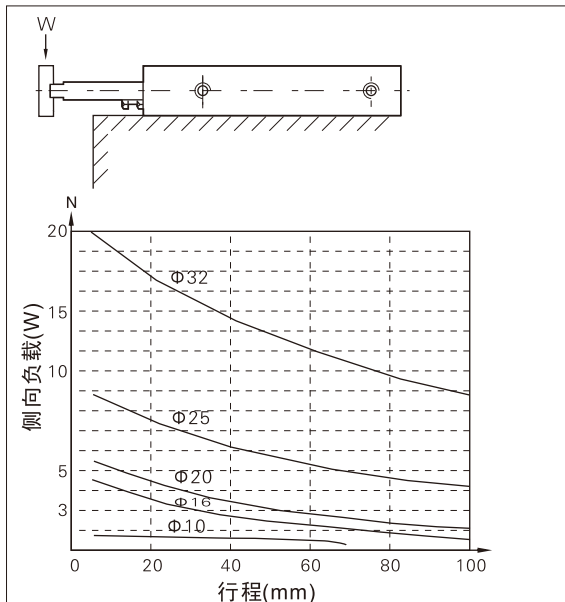
*Please Use Turbine Oil 1st-Grade ISOVG32, If Necessary. (如需要润滑, 请用透平1号油ISOVG32)

How To Order (型号表示方法)

TN 20 - 50 - M9B S

Magnet 有无磁环	Bore 缸径	Stroke 行程	*Auto Switch 磁性开关	No. of Auto Switch 磁性开关数量												
Built-in Magnet (有磁环(标准))	10, 16, 20, 25, 32	Please refer to the table 请参考行程表	<table border="1"> <tr> <td>Nil(空)</td> <td>None (无磁性开关)</td> </tr> <tr> <td>M9B</td> <td>Reed Switch (带有接点磁性开关)</td> </tr> <tr> <td>M9NP</td> <td>Contactless Switch (无接点磁性开关)</td> </tr> </table>	Nil(空)	None (无磁性开关)	M9B	Reed Switch (带有接点磁性开关)	M9NP	Contactless Switch (无接点磁性开关)	<table border="1"> <tr> <td>Nil(空)</td> <td>2 (个)</td> </tr> <tr> <td>S</td> <td>1 (个)</td> </tr> <tr> <td>n</td> <td>n (个)</td> </tr> </table>	Nil(空)	2 (个)	S	1 (个)	n	n (个)
Nil(空)	None (无磁性开关)															
M9B	Reed Switch (带有接点磁性开关)															
M9NP	Contactless Switch (无接点磁性开关)															
Nil(空)	2 (个)															
S	1 (个)															
n	n (个)															
*Auto Switch (磁性开关) 引线长度表示记号: 无记号-1m (标准) L-3m Z-5m																

Allowable Side-load (允许侧向负载)



Stroke (行程)

Bore (缸径) (mm)	STD Stroke (标准行程) (mm)
Ø10	10, 20, 30, 40, 50, 60, 70, 80, 90, 100
Ø16	10, 20, 30, 40, 50, 60, 70, 80, 90, 100, 125, 150, 175, 200
Ø20	
Ø25	
Ø32	

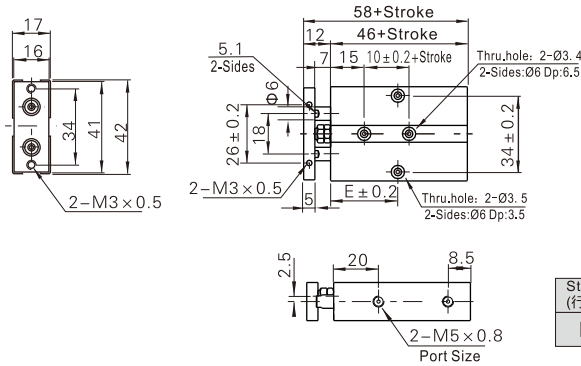
* Contact us for other stroke.
(非标行程请与营业员联系)

双活塞杆气缸 Dual Rod Cylinder

TN Series

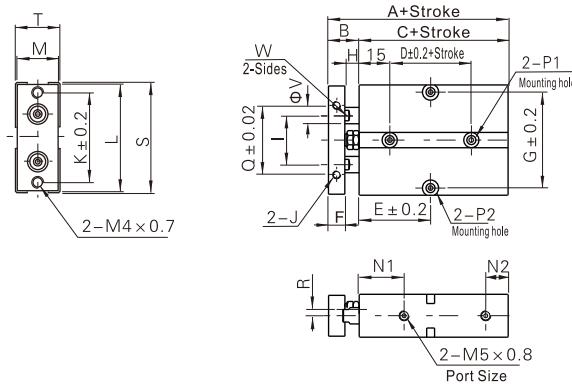
Dimensions(mm)(外形尺寸图(毫米))

TN10



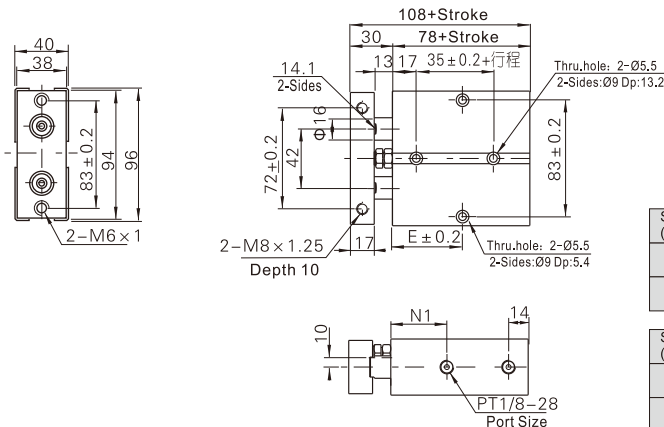
Stroke (行程)	10	20	30	40	50	60	70	80	90	100
E	30	30	35	40	45	50	55	60	65	70

TN16~25



Bore (缸径)	A	B	C	D	E																F	G	H	I	K	J	L	M	N1	N2
					10	20	30	40	50	60	70	80	90	100	125	150	175	200												
Ø16	68	15	53	20	30	35	40	45	50	55	60	65	70	75	87.5	100	112.5	125	8	47	7	24	47	M4X0.7深5	53	20	22	11		
Ø20	78	20	58	20	35	35	40	45	50	55	60	65	70	75	87.5	100	112.5	125	10	55	10	28	55	M4X0.7深5	61	24	25	12		
Ø25	81	19	62	30	40	40	45	50	55	60	65	70	75	80	92.5	105	117.5	130	10	66	9	34	66	M4X0.7深6	72	29	27	12		
Bore (缸径)	P1				P2				Q	R	S	T	V	W																
Ø16	Ø7.5深7.2, 通孔Ø4.5				Ø8深4.5, 通孔Ø4.5				34	3	54	21	8	6.1																
Ø20	Ø7.5深7.2, 通孔Ø4.5				Ø8深4.5, 通孔Ø4.5				44	3.5	62	25	10	8.1																
Ø25	Ø7.5深7.2, 通孔Ø4.5				Ø8深4.5, 通孔Ø4.5				56	6	73	30	12	10.1																

TN32



Stroke (行程)	10	20	30	40	50	60	70	80	90	100
E	45	50	55	60	65	70	75	80	85	90
N1	35	40	40	40	40	40	40	40	40	40

Stroke (行程)	125	150	175	200
E	102.5	115	127.5	140
N1	40	40	40	40