

组合式真空发生器(标准型)

Combined Type Vacuum Pump (Standard)

TVMP150~500 Series



Features(产品特点)

- The TVMP combined type high flow vacuum pump can produce very high vacuum flow. This type of pump can be used in many applications especially in high leakage systems, porous materials vacuum system and large vacuum circuits. The vacuum gauge, air pressure gauge, 1"silencer and mounting bracket are also supplied together with the pump.
- TVMP 组合式大流量真空发生器会产生非常高的真空流量，对高度泄漏、材料多孔疏松的真空系统和大的真空线路有显著的作用。该发生器配有真空表和供气压力表、1寸消声器，并且提供安装支架。

Specifications(技术规格)

Max.vacuum Level(最大真空度)	-kPa	92
Max.vacuum Flow(最大真空流量)	l/min	4570
Air Supply Pressure(供气压力)	bar	3.4~6 Max.7
Temperature Range(温度范围)	°C	-20~80
Weight(重量)	g	3724~7929
Noise Level(噪音)	dBA	55~68

Technical Parameters(产品参数)

Model(型号)	Max.vacuum Level (最大真空度) (-kPa)	Max.vacuum Flow (最大真空流量) (l/min)	Air Consumption (空气消耗量) (l/min)	Weight(重量) (g)	Min Tube InnerΦ(最小软管内径)(Within 2m(2m以内))		
					Air Supply(供气)	Vacuum(真空)	EXhaust(排气)
TVMP150	92	1880	720~1120	3724	>10	>32	>40
TVMP200		2200	930~1460	3892	>10	>32	>40
TVMP300		3150	1420~2290	5525	>12	>40	>60
TVMP400		3710	1680~2790	6447	>12	>40	>60
TVMP500		4570	2440~3520	7929	>14	>45	>70

How To Order(型号表示方法)

TVMP150 P-N-A

① ② ③ ④

① Model(型号)

TVMP150 TVMP400
TVMP200 TVMP500
TVMP300

② Exhaust Specification(排气规格)

Nil(无记号)	Standard(标准型)
P	Side Exhaust(侧口排气)

③ Sealing(密封材料)

N	NBR(丁腈橡胶)
E	EPDM(三元乙丙橡胶)
V	VITON(氟橡胶)

④ Non-Return Valve(止回阀)

A	Yes(有)
-	No(无)

Parameters(参数)

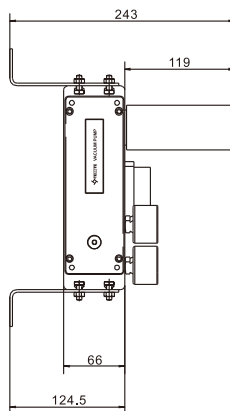
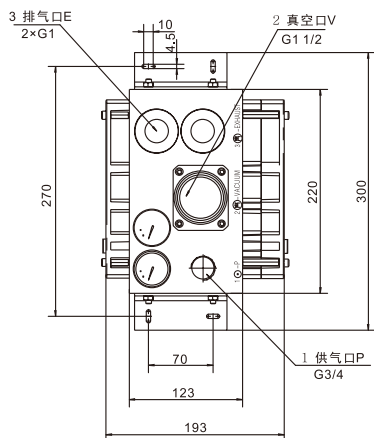
Model (型号)	-kPa	Air Supply Pressure (供气压力) bar	Air Consumption (空气消耗量) l/m	Max.Vacuum Level (最大真空度) -kPa	不同真空度(-kPa)的真空流量(l/min)										不同真空度(-kPa)的抽气时间(s/l)									
					0	10	20	30	40	50	60	70	80	90	10	20	30	40	50	60	70	80	90	
TVMP150	3.4	3.4	720 l/min	92	1550	840	610	315	205	150	95	80	36	2.5	0.009	0.02	0.03	0.06	0.09	0.14	0.21	0.47	0.93	
TVMP200			930 l/min		1840	1090	770	470	280	210	155	95	50	4	0.006	0.016	0.028	0.04	0.06	0.11	0.16	0.27	0.82	
TVMP300			1420 l/min		2750	1610	1160	760	470	325	270	185	80	7.5	0.004	0.014	0.02	0.03	0.05	0.07	0.11	0.17	0.45	
TVMP400			1680 l/min		3290	2080	1420	870	620	372	335	215	100	11.5	0.004	0.01	0.015	0.023	0.03	0.05	0.08	0.13	0.37	
TVMP500			2440 l/min		3740	2420	1800	970	710	590	360	270	130	15.5	-	-	-	-	-	-	-	-	-	-
TVMP150	6	6	1120 l/min	89	1880	1210	730	640	490	340	200	75	25	-	0.007	0.017	0.026	0.04	0.06	0.08	0.12	0.5	-	
TVMP200			1460 l/min		2200	1490	930	800	650	490	245	85	11	-	0.005	0.012	0.022	0.03	0.04	0.06	0.11	0.33	-	
TVMP300			2290 l/min		3150	2100	1410	1180	930	660	365	105	75	-	0.004	0.01	0.013	0.023	0.03	0.04	0.08	0.19	-	
TVMP400			2790 l/min		3710	2480	1800	1450	1100	870	370	195	80	-	0.003	0.008	0.012	0.02	0.025	0.03	0.06	0.15	-	
TVMP500			3520 l/min		4570	3240	2330	1800	1470	1140	700	205	115	-	-	-	-	-	-	-	-	-	-	-

组合式真空发生器(标准型) Combined Type Vacuum Pump (Standard)

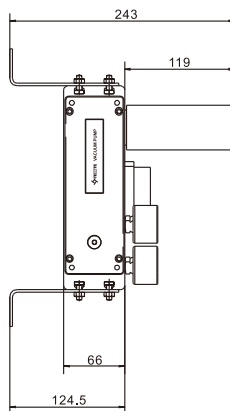
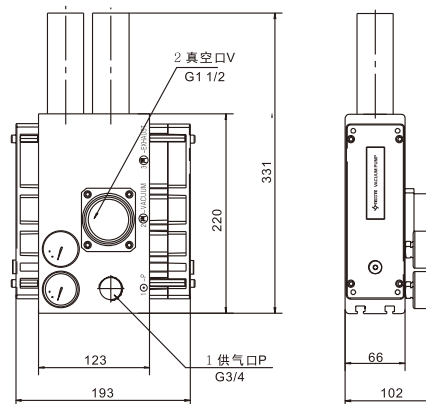
TVMP150~500 Series

Dimensions (mm)(外形尺寸(毫米))

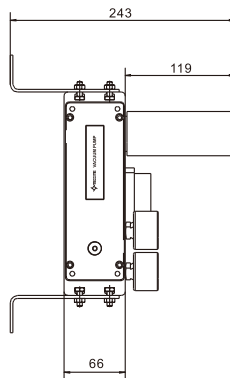
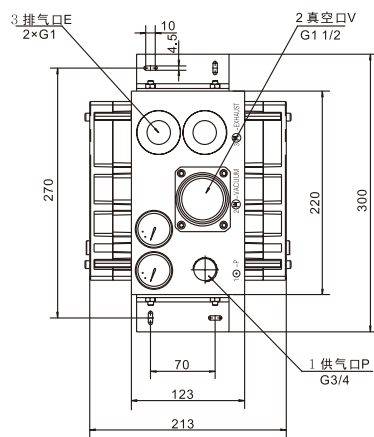
TVMP150



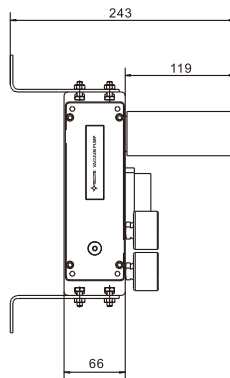
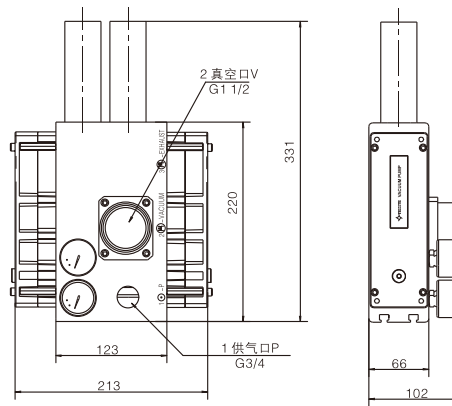
TVMP150P



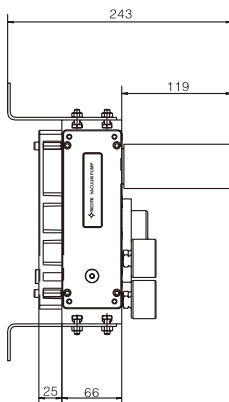
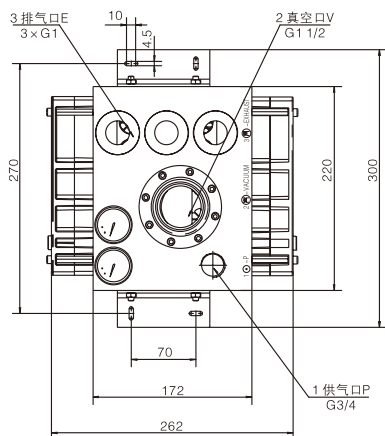
TVMP200



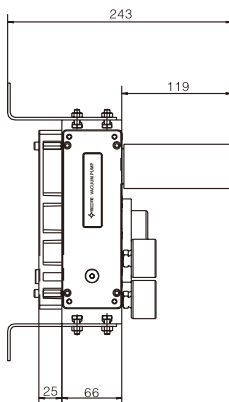
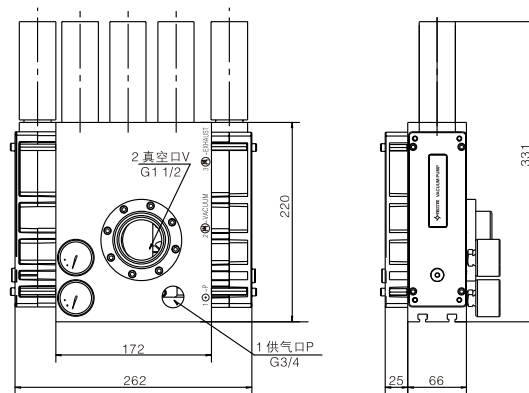
TVMP200P



TVMP300



TVMP300P



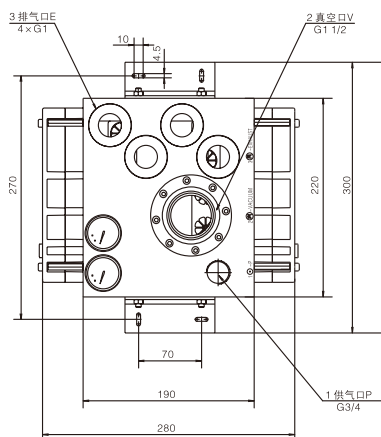
组合式真空发生器(标准型)

Combined Type Vacuum Pump (Standard)

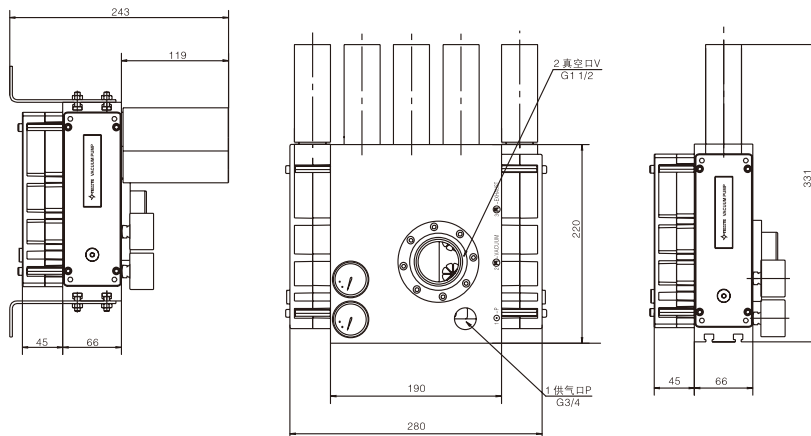
TVMP150~500 Series

Dimensions (mm)(外形尺寸(毫米))

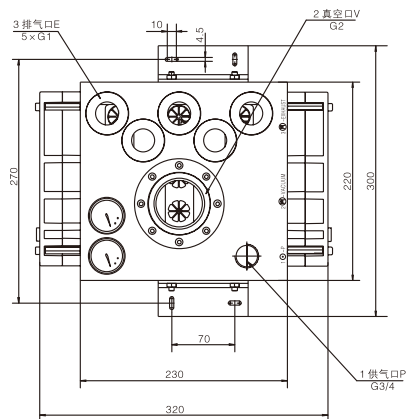
TVMP400



TVMP400P



TVMP500



TVMP500P

