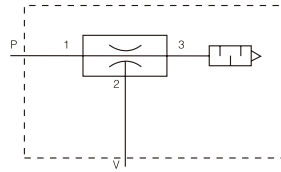


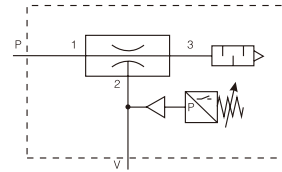
Symbol(符号)



ACV(Standard(标准))



ACV-\*\*CK(With Pressure Switch(附压力开关))



Specifications(技术规格)

Model(项目)	Unit(单位)	ACV-05		ACV-10			ACV-15			ACV-20			ACV-25		ACV-30	
		HS	LS	HS	LS	HR	HS	LS	HR	HS	LS	HR	HS	LS	HS	LS
Fluid(使用流体)		No Oil Compressed Air(无油压缩空气)														
Ambient Temperature(周围温度)	°C	0~60(No Freezing(不要冻结))														
Operating Pressure Range(使用压力范围)	bar	1~6														
Nozzle Diameter(喷嘴直径)	Φmm	0.5		1.0			1.5			2.0			2.5		3.0	
Rated Pressure(额定压力)	bar	5		5		3.5	5		3.5	5		3.5	5		5	
Vacuum Flow Rate(真空流量)	l/min	7	10	27	36	25	63	95	54	110	170	88	160	250	225	350
Max.vacuum Pressure(到达真空压力)	kPa	-87	-57	-92	-57	-91	-92	-57	-91	-92	-57	-91	-92	-57	-92	-57
Air Consumption Flow Rate(空气消耗量)	l/min	13		44			100			180			265		385	
Net weight(净重)	Without Pressure Switch(无压力开关)	g		80			140			350			730		870	
	With Pressure Switch(附压力开关)	g		120			190			460			-		-	

How To Order(型号表示方法)

ACV - 05 H S CK

① ② ③ ④

① Nozzle Diameter(喷嘴直径)

05	Φ0.5
10	Φ1.0
15	Φ1.5
20	Φ2.0
25	Φ2.5
30	Φ3.0

② Max.vacuum Pressure(到达真空压力)

H	-87kPa(Pressure Type(压力型))
L	-53kPa(Flow Type(流量型))

③ Rated Pressure(额定供气压力)

S	5bar
R	3.5bar

④ Pressure Switch(压力开关)

Nil(无记号)	Standard(No Pressure Switch)(标准型(没有压力开关))
CK	With Adjustable Pressure Switch(附可调式压力开关)
C	With Unadjustable Pressure Switch(附不可调式压力开关)

Note:When nozzle diameter is 30, only standard type is available (no pressure switch)

注：喷嘴直径是30型号时,只有标准型(没有压力开关)

Pressure Switch Specifications(压力开关规格)

Model(型号)	Unit(单位)	CK	
Fluid(使用流体)		Air(空气)	
Setting Pressure Range(设定压力范围)	kPa	-20~-53	
Ambient Temperature(周围温度)	°C	0~60(No Freezing(不要冻结))	
Operating Accuracy(反复精度)	kPa	± 5.3	
Hysteresis(允许误差)	kPa	4.0~13.3	
Service Voltage(使用电压)	V	AC250V Below(以下)	DC24V Below(以下)
Load Current(负荷电流)	A	3	0.2

# 基本型真空发生器 Basic Vacuum Pump

**AIRBEST** Series

## ACV Series

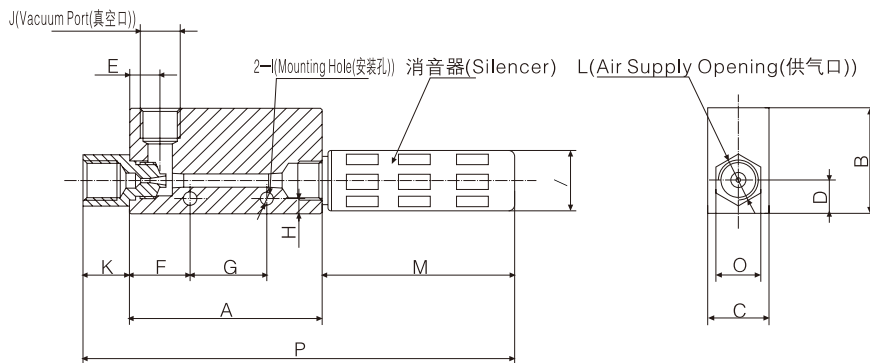
### Parameters(参数)

Model (型号)	-kPa	Air Supply Pressure (供气压力) bar	Air Consumption (空气消耗量) l/m	Max. Vacuum Level (最大真空度)	不同真空度(-kPa)的真空流量(l/min)								不同真空度(-kPa)的抽气时间(s/l)								
					0	10	20	30	40	50	60	70	80	10	20	30	40	50	60	70	80
ACV-05HS		5	13 l/min	-87kPa	7	5.5	4.2	3	1.5	0.8	0.5	0.2	0.05	0.676	1.384	2.769	4.323	6.015	8.246	9.438	11.820
ACV-10HS			44 l/min		27	19	16	14.5	13	10.5	8	6.5	2.5	0.2	0.492	0.815	1.246	1.738	2.323	2.953	4
ACV-15HS			100 l/min		63	55	44	37	32.5	25	18	14	9	0.078	0.187	0.32	0.477	0.692	0.924	1.384	1.953
ACV-20HS			180 l/min		110	100	85	75	55	40.5	30	20	12	0.043	0.1	0.167	0.23	0.338	0.492	0.707	0.923
ACV-25HS			265 l/min		160	155	140	120	95	72	47	28	15	0.03	0.069	0.112	0.168	0.241	0.345	0.494	0.753
ACV-30HS			385 l/min		225	200	160	135	105	78	55	33	19	0.029	0.058	0.092	0.136	0.196	0.265	0.406	0.625

Model (型号)	-kPa	Air Supply Pressure (供气压力) bar	Air Consumption (空气消耗量) l/m	Max. Vacuum Level (最大真空度)	不同真空度(-kPa)的真空流量(l/min)								不同真空度(-kPa)的抽气时间(s/l)				
					0	10	20	30	40	50	55	10	20	30	40	50	55
ACV-05LS		5	13 l/min	-57kPa	10	9	8	6.5	2.5	1.8	0.7	0.307	0.984	1.892	3.169	5.123	6.66
ACV-10LS			44 l/min		36	31.5	23.5	16.5	10	6.5	2.5	0.107	0.277	0.507	0.830	1.323	1.414
ACV-15LS			100 l/min		95	85	70	47.5	30.5	15.5	5.5	0.044	0.102	0.153	0.261	0.415	0.553
ACV-20LS			180 l/min		170	125	115	95	70	35.5	7.5	0.029	0.062	0.105	0.138	0.246	0.338
ACV-25LS			265 l/min		250	215	200	150	105	60	36	0.021	0.046	0.076	0.123	0.184	0.3
ACV-30LS			385 l/min		350	295	267	215	150	85	41	0.017	0.035	0.058	0.086	0.132	0.219

### Dimensions (mm)(外形尺寸(毫米))

ACV-□□Standard(标准) (Without Pressure Switch(不附压力开关))



Model(型号)	A	B	C	D	E	F	G	H	I	J	K	L	M	N	O	P	Silencer Mounting Screw(消声器)
ACV05	45	33	16	10	8	14	20	4.5	2-Φ4.5	Rp1/8	10	Rp1/8	30	Φ15	14	85	Rp1/8
ACV10	45	33	16	10	8	14	20	4.5	2-Φ4.5	Rp1/8	10	Rp1/8	30	Φ15	14	85	Rp1/8
ACV15	63	35	20	11	10	20	25	5	2-Φ4.5	Rp1/4	15	Rp1/4	51	Φ19	17	129	Rp1/4
ACV20	85	40	30	15	13	28	32	7	2-Φ6	Rp3/8	20	Rp1/4	80	Φ30	24	185	Rp1/2
ACV20CK	85	50	30	15	13	28	32	7	2-Φ6	Rp3/8	20	Rp1/4	80	Φ30	24	185	Rp1/2
ACV25	100	60	40	20	16	20	50	5.5	2-Φ6	Rc1/2	17	Rc3/8	119	Φ40	28	236	Rp3/4
ACV30	118	60	40	20	20	33	50	5.5	2-Φ6	Rc3/4	20	Rc1/2	119	Φ40	30	257	Rp3/4

ACV-CK (With Adjustable Pressure Switch(附可调式压力开关))

