

基本型真空发生器 Basic Vacuum Pump

AIRBEST Series

AZH Series

How To Order(型号表示方法)



AZH **07** B **S** - **06** - **06**
 AZH **07** D **S** - **01** - **01** - **01**

① Nozzle Diameter(喷嘴直径)(mm)

05	0.5
07	0.7
10	1.0
13	1.3
15	1.5
18	1.8
20	2.0

② Max.vacuum Pressure
(最高真空度)

S	-88kPa
L	-48kPa

③ SUP. Port Size(通口连接口径)

Symbol(记号)	Size(尺寸)	Style(形式)
06	Φ06	One-touch(快换接头)
08	Φ08	One-touch(快换接头)
10	Φ10	One-touch(快换接头)
12	Φ12	One-touch(快换接头)
01	Rc 1/8	Screw-in(螺纹拧入)
02	Rc 1/4	Screw-in(螺纹拧入)
03	Rc 3/8	Screw-in(螺纹拧入)

④ VAC. Port Size(通口连接口径)

Symbol(记号)	Size(尺寸)	Style(形式)
06	Φ06	One-touch(快换接头)
10	Φ10	One-touch(快换接头)
12	Φ12	One-touch(快换接头)
16	Φ16	One-touch(快换接头)
01	Rc 1/8	Screw-in(螺纹拧入)
02	Rc 1/4	Screw-in(螺纹拧入)
03	Rc 3/8	Screw-in(螺纹拧入)
04	Rc 1/2	Screw-in(螺纹拧入)

⑤ EXH. Port Size(通口连接口径)

Symbol(记号)	Size(尺寸)	Style(形式)
06	Φ06	One-touch(快换接头)
08	Φ08	One-touch(快换接头)
10	Φ10	One-touch(快换接头)
12	Φ12	One-touch(快换接头)
16	Φ16	One-touch(快换接头)
01	Rc 1/8	Screw-in(螺纹拧入)
02	Rc 1/4	Screw-in(螺纹拧入)
03	Rc 3/8	Screw-in(螺纹拧入)
04	Rc 1/2	Screw-in(螺纹拧入)

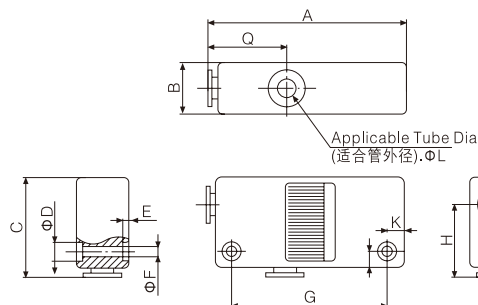
Specifications(技术规格)

Model(型号)	Nozzle Diameter (喷嘴直径) Φmm	Body Style (主体形式)	Max.vacuum Pressure (最高真空度) (kpa)		Max.vacuum Flow (最大真空流量) l/min		Air Consumption (空气消耗量) l/min	Connection(One-touch/Screw-in) 连接形式(快换接头/螺纹拧入)		
			S Style(型)	L Style(型)	S Style(型)	L Style(型)		S Style(型)/L Style(型)	SUP	VAC
AZH05B□	0.5	Box Style (Built-in Silencer) 盒型(内置消声器)	-88	-48	5	9	13.5	Φ6/Rc1/8	Φ6/Rc1/8	---
AZH07B□	0.7				12	22	23.5			
AZH10B□	1.0				24	34	46			
AZH13B□	1.3				40	75	78			
AZH05D□	0.5	Body Ported Style (Without Silencer) 直接配管型 (无消声器)	-88	-48	7.5	9	13.5	Φ6/Rc1/8	Φ6/Rc1/8	Φ6/Rc1/8
AZH07D□	0.7				12	22	23.5			
AZH10D□	1.0				24	34	46			
AZH13D□	1.3				40	75	78			
AZH15D□	1.5	Body Ported Style (Without Silencer) 直接配管型 (无消声器)	-88	-53	60	80	97	Φ10/Rc1/4	Φ12/Rc3/8	Φ12/Rc3/8
AZH18D□	1.8				70	110	150			
AZH20D□	2.0				85	140	185			

*Supply Pressure(供给压力):4.5bar时

Dimensions (mm)(外形尺寸(毫米))

Box Style (Built-in Silencer)盒型(内置消声器)

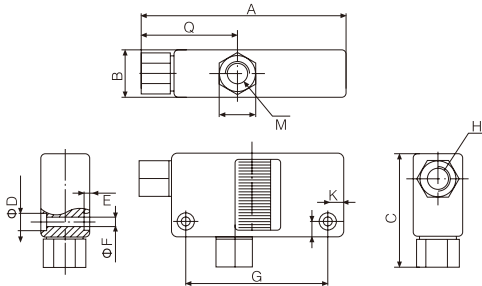


One-touch Connection(快换接头连接)

Model(型号)	A	B	C	D	E	F	G	H	Q	L	K	J
AZH05B-06-06	60	16	31	5.8	2	3.2	47	22	24	6	5	6
AZH07B-06-06	60	16	31	5.8	2	3.2	47	22	24	6	5	6
AZH10B-06-06	63	18	32	5.8	2	3.2	50	23	26	6	5	6
AZH13B-08-10	78	23	38.5	7.5	3	4.2	61	27.5	28	10	7	8

Dimensions (mm)(外形尺寸(毫米))

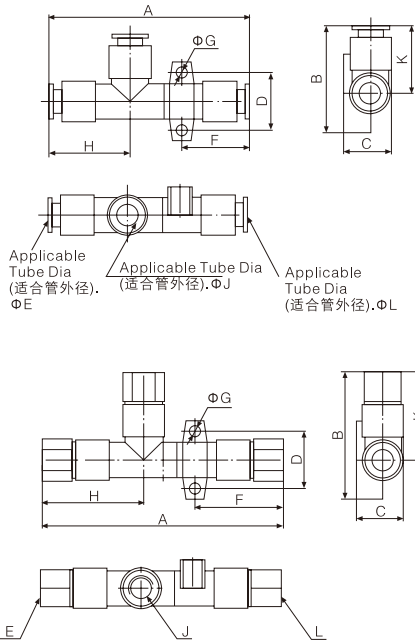
Box Style (Built-in Silencer)盒型(内置消声器)



Screw-in Connection(螺纹连接)

Model(型号)	A	B	C	D	E	F	G	H	Q	M	K	T
AZH05B-01-01	68	16	39	5.8	2	3.2	47	Rc1/8	31.5	Rc1/8	5	12
AZH07B-01-01	68	16	39	5.8	2	3.2	47	Rc1/8	31.5	Rc1/8	5	12
AZH10B-01-01	71	18	40	5.8	2	3.2	50	Rc1/8	33.5	Rc1/8	5	12
AZH13B-01-02	86.5	23	50	7.5	3	4.2	61	Rc1/8	36.5	Rc1/4	7	14

Body Ported Style (Without Silencer)(直接接管性(无消声器))



One-touch Connection(快换接头连接)

Model(型号)	A	B	C	D	E	F	G	H	L	K	J
AZH05D-06-06-06	58.5	34	14.2	17	6	21	3.2	24	6	22	6
AZH07D-06-06-06	61	34	14.2	17	6	22	3.2	24	6	22	6
AZH10D S06-06-08	66 70	37	17.2	20	6	24.5	4.2	26	8	23	6
AZH13D S08-10-10	74 79.5	42.5	20	22	8	27	4.2	28	10	27.5	10
AZH15D-10-12-12	93.3	47	22.5	27	10	32.8	4.2	31.5	12	29.5	12
AZH18D-12-12-12	114	41	21	10	12	50	3.5	35.5	12	30.5	12
AZH20D-12-16-16	124.6	46	27	12	12	54.3	3.5	38.5	16	32.7	16

Screw-in Connection(螺纹连接)

Model(型号)	A	B	C	D	E	F	G	H	L	K	J
AZH05D-01-01-01	73.5	41.5	14.2	17	Rc1/8	28.5	3.2	31.5	Rc1/8	22	Rc1/8
AZH07D-01-01-01	76	41.5	14.2	17	Rc1/8	29.5	3.2	31.5	Rc1/8	22	Rc1/8
AZH10D S01-01-01	82 86	44.5	17.2	20	Rc1/8	33	4.2	33.5	Rc1/8	23	Rc1/8
AZH13D S01-02-02	94.5 99.5	54	20	22	Rc1/8	38.5	4.2	36.5	Rc1/4	27.5	Rc1/4
AZH15D-02-03-03	116.5	58.5	22.5	27	Rc1/4	44.5	4.2	43	Rc3/8	29.5	Rc3/8
AZH18D-03-03-03	133	52.5	21	10	Rc3/8	57.5	3.5	47	Rc3/8	30.5	Rc3/8
AZH20D-03-04-04	151	61	27	12	Rc3/8	69.3	3.5	50	Rc1/2	32.7	Rc1/2

Parameters(参数)

Model(型号)	-kPa	Air Supply Pressure(供气压力) bar	Air Consumption(空气消耗量) l/min	Max. Vacuum Level(最大真空度)	不同真空度(-kPa)的真空流量(l/min)										不同真空度(-kPa)的抽气时间(s/l)							
					0	10	20	30	40	45	50	60	70	80	10	20	30	40	45	50	60	70
AZH05S		4.5	13.5	-88kPa	5	4.5	4.1	3.8	3.3	-	2.3	1.6	0.9	0.3	0.89	1.7	3.2	5	-	7.8	12	19
AZH07S		23.5	23.5		12	11	10	9	8	-	7	5.5	2.1	0.8	0.37	1	1.9	3	-	5.4	6.7	15
AZH10S		46	46		24	23	20.5	17.5	13	-	11.5	9.5	7	2.5	0.25	0.6	1.25	2	-	2.9	4.6	7.3
AZH13S		78	78		40	35	32.5	28	23	-	19.5	13	9	4.5	0.1	0.27	0.53	1	-	1.75	4.2	7.3
AZH15S		97	97		60	52.5	45.5	38	28.5	-	20.5	15.5	11.5	5	0.04	0.21	0.35	0.63	-	1.23	4.1	6.5
AZH18S		150	150		70	62	52	45	38	-	26	22	16.5	8.5	0.02	0.15	0.29	0.46	-	0.78	1.38	3.51
AZH20S		185	185		85	76	67	58	47.5	-	38	33.5	19	12	0.02	0.12	0.21	0.34	-	0.55	0.85	1.58
AZH05L		4.5	13.5		-88kPa	9	8	7	6	3	1.9	-	-	-	0.49	1.5	2.9	5.1	7.2	-	-	-
AZH07L		23.5	23.5	22		21	20.5	15.5	10.5	6.8	-	-	-	-	0.28	0.75	1.5	2.5	3.5	-	-	-
AZH10L		46	46	34		32	26	19	12	8	-	-	-	-	0.14	0.4	0.81	1.4	1.8	-	-	-
AZH13L		78	78	75		72	65	43	19	9	-	-	-	-	0.04	0.12	0.24	0.62	2.4	-	-	-
AZH15L		97	97	80		72	60	45	36.5	-	16	-	-	-	0.03	0.15	0.23	0.4	-	0.92	-	-
AZH18L		150	150	110		105	95	80	55	-	30	-	-	-	0.02	0.10	0.18	0.32	-	0.67	-	-
AZH20L		185	185	140		130	120	100	80	-	62	-	-	-	0.01	0.08	0.14	0.2	-	0.3	-	-