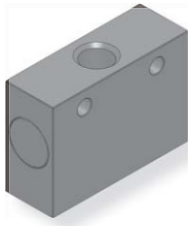
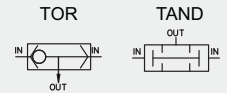


逻辑阀(换向阀/双压阀)

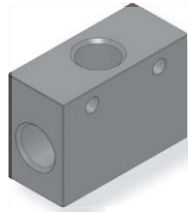
Logic Valve

TOR/TAND Series

图形符号



TOR01-01
换向阀



TAND01-01
双压阀

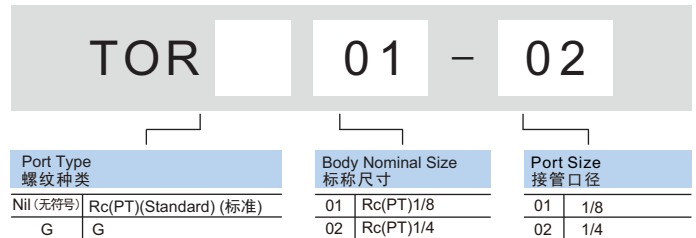
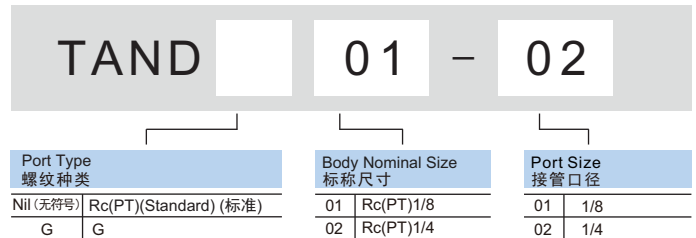
Common Specification (共同规格)

Type(型号)	TOR01-01	TOR02-02	TAND01-01
Fluid(流体)	Air, Inert Gas(空气, 惰性气体)		
Ambient Temperature(环境温度)	5°C~60°C		
Operating Pressure(使用压力)	1~10kgf/cm ² (0.1~1MPa)		
Proof Pressure(最佳使用差压)	0.5kgf/cm ² (0.5MPa)		
Port Size(接管口径)	Rc(PT)1/8	Rc(PT)1/4	Rc(PT)1/8
Effective Sectional Area(有效截面积)	9mm ²	9mm ²	9.9mm ²

Features (特点)

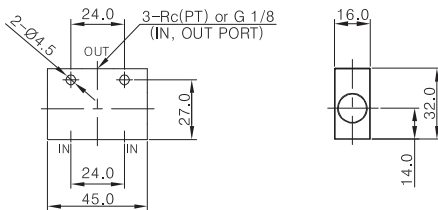
- Excellent durability with its non-lubricated type.
- Relay valves to control pneumatic signal lines.
- TOR type - 3 ported check valve with one output and 2 pneumatic input ports. Output always supplied by high pressure inlet.
- TAND type - 3 port valve with one output and 2 pneumatic input ports. Only when both input ports are supplied with air, the air flows to the output port. When air pressure differs, pressure in the lower amount flows to the output port.
- 非润滑型，耐久性强。
- 控制气源信号系统线的继电器设备。
- TOR型由2个供气口和一个排气口组成，操作时，排气口将与高压供气口接通，低压供气口则被切断。
- TAND型由2个供气口和一个排气口组成。两个供气口得同时供气才能让排气口排气。

How To Order (型号表示方法)

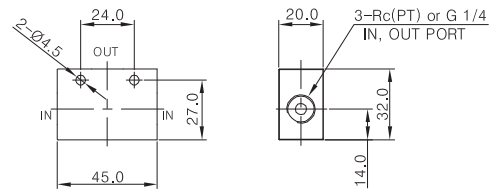


Dimensions(mm)(外形尺寸图(毫米))

TOR 01-01



TOR 02-02



TAND 01-01

