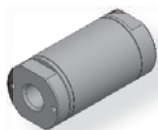
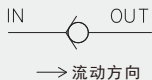


单向阀

Check Valve

TCV Series

图形符号



TCV2000-01



TCV4000-04



TCV6000-10

Common Specification (共同规格)

Type(型号)	TCV2000-01	TCV2000-02	TCV4000-03
Fluid(流体)	Air(空气)		
Ambient Temperature(环境温度)	5°C~60°C		
Operating Pressure(使用压力)	0.3~10kgf/cm ² (0.03~1MPa)		
Proof Pressure(耐差力)	15kgf/cm ² (1.5MPa)		
Port Size(接管口径)	Rc(PT)1/8	Rc(PT)1/4	Rc(PT)3/8
Effective Sectional Area(有效截面积)	28mm ²		9.9mm ²

Type(型号)	TCV4000-04	TCV6000-06	TCV6000-10
Fluid(流体)	Air(空气)		
Ambient Temperature(环境温度)	5°C~60°C		
Operating Pressure(使用压力)	0.3~10kgf/cm ² (0.03~1MPa)		
Proof Pressure(最佳使用差压)	15kgf/cm ² (1.5MPa)		
Port Size(接管口径)	Rc(PT)1/8	Rc(PT)1/4	Rc(PT)1/8
Effective Sectional Area(有效截面积)	110mm ²	220mm ²	250mm ²

Features(特点)

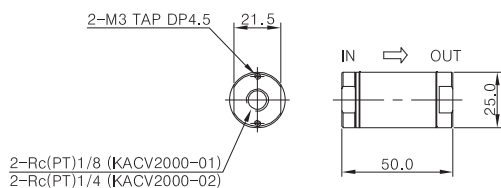
- Excellent durability with its non-lubricated type.
- Large capacity valve can be used for large actuator.
- Quick response time with low cracking pressure.
- 非润滑型具有优良的耐久性。
- 适用于大型驱动机械的大容量阀门。
- 低先导驱动压力使之回应速度快。

How To Order (型号表示方法)

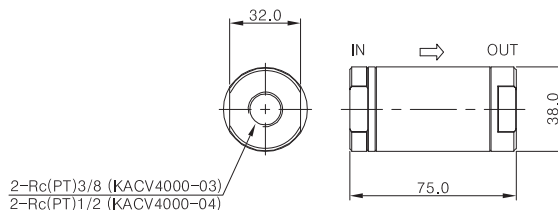
TCV		2000	-	02
Port Type 阀体种类		Bore Size 阀体尺寸		Port Size 接管口径
Nil (无符号)	Rc(PT)(Standard) (标准)	2000	Ø20	01 1/8
G	G	4000	Ø32	02 1/4
		6000	Ø40	03 3/8
				04 1/2
				06 3/4
				10 1

Dimensions(mm)(外形尺寸图(毫米))

TCV 2000 - 01, 02



TCV 4000 - 03, 04



TCV 6000 - 06, 10

