



Features(产品特点)

- Plastic housing optimized for minimum weight and size
- Connections with thread holes
- Open type silencer
- 塑料外壳，重量轻、体积小
- 螺纹连接
- 开口式消声器

Advantages(主要优势)

- Ideal for decentralized vacuum generation in highly dynamic processes
- Various power ratings for minimum air consumption
- Space-saving and easy to install
- Low noise levels and minimum maintenance requirements
- 适合快速运动系统中各工位需要真空的场合
- 有各种输出动力，满足最小空气消耗量的要求
- 安装简便，节省空间
- 噪音低，最低维护要求

Applications(应用)

- Use in feeder systems
- Handling of electronic components
- Use in separation systems for plastic and sheet-metal machining
- Construction of ejector blocks for decentralized individual control of suction pads
- 用于进料系统中
- 搬运电子元器件
- 用于和金属板加工过程中分离工件的作业
- 真空发生器组件结构，可控制单独分散的吸盘

Specifications & Parameters(技术规格和参数)

Model(型号)	Nozzle Diameter (喷嘴直径)(mm)	Vacuum Level (真空度)(-kPa)	Max. vacuum Flow (最大真空流量)(l/min)	Air Consumpt. during Evac. (空气消耗量)(l/min)*	Noise Level Workp.gripped (吸取物体时噪音等级)(db(A))
ASBP 10 SDA	1.0	-85	38	50	59
ASBP 15 SDA	1.5	-85	72	110	65

*For Max. Length 2m

Model(型号)	Noise Level Free (空闲时噪音等级)(db(A))	Operating Pressure (工作压力)(bar)	Recomm. Int. Tube Diameter Compr. Air (建议压缩空气软管内径)(mm)*	Recomm. Int. Tube Diameter Vacuum (建议真空软管内径)(mm)*	Weight (重量)(g)*	Operating Temperature (工作温度)(°C)
ASBP 10 SDA	65	4.5	4	6	22.0	0-60
ASBP 15 SDA	72	4.5	4	6	22.0	0-60

*For max. length 2m

Model (型号)	-kPa	Air Supply Pressure (供气压力) bar	Air Consumption (空气消耗量) l/min	Max. Vacuum Level (最大真空度)	不同真空度(-kPa)的真空流量(l/min)								不同真空度(-kPa)的抽气时间(s/l)							
					0	10	20	30	40	50	60	70	80	10	20	30	40	50	60	70
ASBP10	4.5	50 l/min	110 l/min	-85kPa	38	30	26	23	18.6	16	11	7	1.8	0.123	0.323	0.6	1	1.72	3	-
					72	60	52	44	36	30	24	15.5	2.2	0.06	0.18	0.32	0.52	0.81	1.32	2.7

How To Order(型号表示方法)

Dimensions(外形尺寸)(mm)

ASBP 15 G2 SDA

① ② ③

① Nozzle Diameter(喷嘴直径)

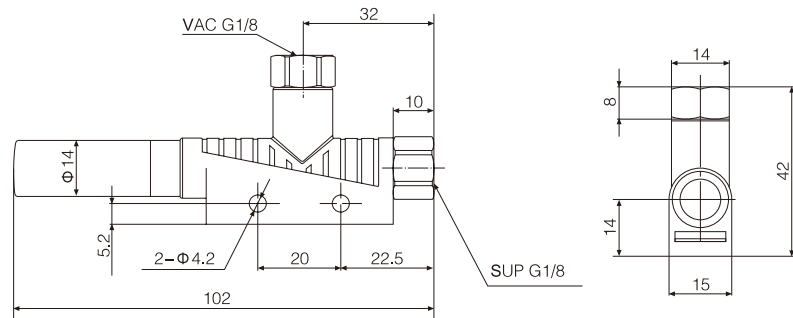
10	Φ 1.0
15	Φ 1.5

②

Thread Hole(螺纹孔) G2(See The Table(见下表))

③

Blank(空白)	Nil(无记号)
SDA	With Axial Silencer(带轴向消声器)



• Connection Thread(连接螺纹)

Model(型号)	Connection:Quick-action Push-in Coupling/Thread Hole(连接:快换连接/螺纹)	
	SUP	VAC
ASBP 10 G2	G 1/8	VAC
ASBP 15 G2		G 1/8