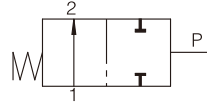




Features(产品特点)



- 2 position 2 way directional valve (normally open)with 1/8 and 1/4 air inlet realizes the opening and closure of air supply and energy saving through vacuum switch returns air signal. The small valve can control high flow compressed air.
- 1/8和1/4进气口2位2通换向阀（常通）通过真空开关返回气信号，来实现供气开启和关闭，实现节能等。这种小体积的阀能够控制高流量的压缩空气。

How To Order(型号表示方法)

APL06 - D

① ②

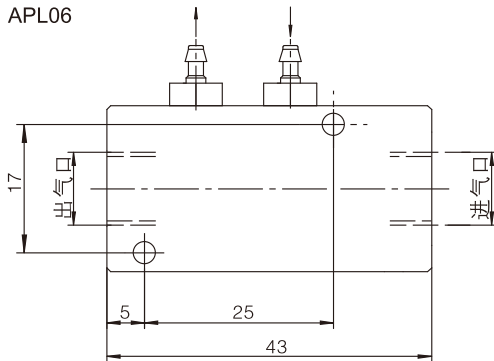
①Model(型号)	APL06		APL08
②Function(功能)	B=NPT1/8	D=NPSF1/8	G=G1/8
	NPT1/4	NPSF1/4	G1/4

Specifications(产品参数)

Air Supply Pressure(供气压力)	2.5~7bar
Ambient Temperature(周围温度)	0~60°C
Valve Body Material(阀体材质)	Aluminum(铝)

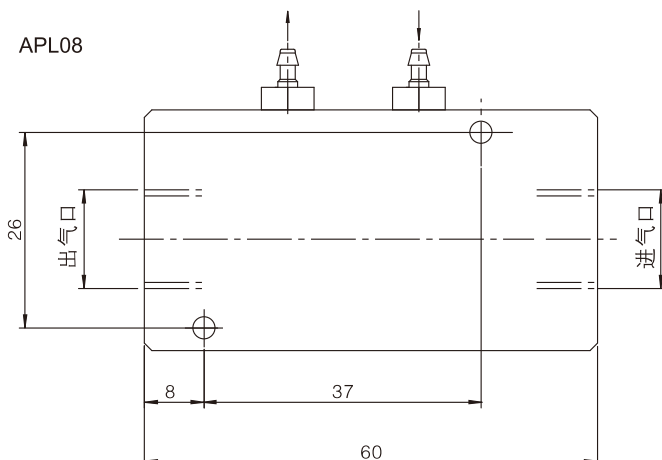
Dimensions(mm)(外形尺寸图(毫米))

APL06



Air Inlet(进气口)(Air Outlet(出气口))
B=NPT1/8
D=NPSF1/8
G=G1/8

APL08



Air Inlet(进气口)(Air Outlet(出气口))
B=NPT1/4
D=NPSF1/4
G=G1/4