

# 摇摆型吸盘附固定式金属底座

**AIRBEST** Series

## Swivel Type Vacuum Pad with Locking Fittings

### SPUTKB / SPUYKB Series



#### How To Order(型号表示方法)

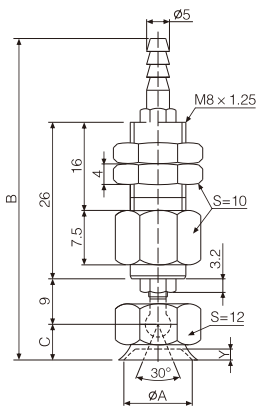
SPU - T KB - 80 - N

① VacuumEntryDirection (真空口方向)	② Pad Diameter (吸盘直径)(mm)	③ Pad Material(吸盘材料)
T Vertical(垂直方向)	35 60	N Nitrile Rubber(丁腈硅胶)
Y Lateral(水平方向)	40 80	S Silicone(硅胶)
	50 100	NE 导电性丁腈硅胶
		SE 导电性硅胶

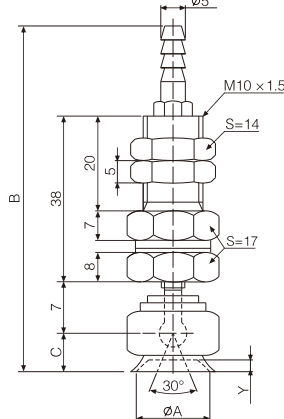
#### Dimensions(mm)(外形尺寸图(毫米))

##### Vertical Direction Connection(垂直方向连接) • SPUTKB

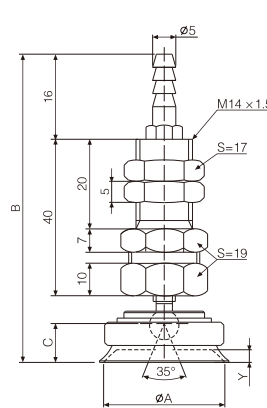
Pad Diameters (适合吸盘直径)  
Φ10 • Φ15



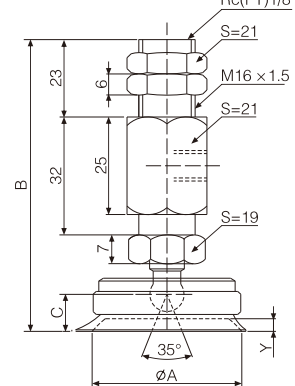
Pad Diameters (适合吸盘直径)  
Φ20 • Φ25 • Φ30 • Φ35



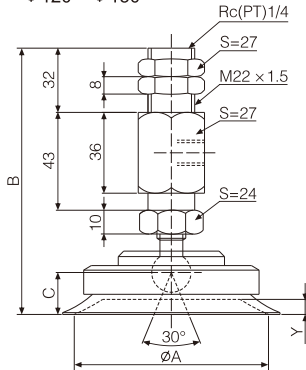
Pad Diameters (适合吸盘直径)  
Φ40 • Φ50



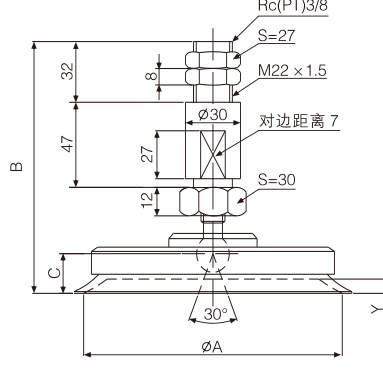
Pad Diameters (适合吸盘直径)  
Φ60 • Φ80 • Φ100



Pad Diameters (适合吸盘直径)  
Φ120 • Φ150



Pad Diameters (适合吸盘直径)  
Φ200



S:Width across flats(六角对边尺寸)

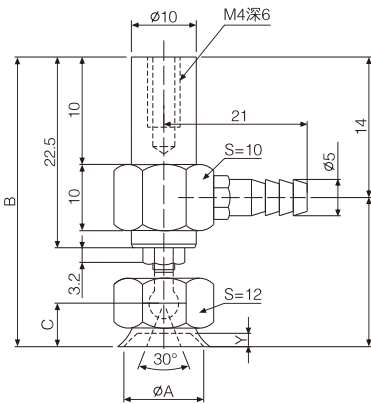
SPUTKB(型号)	A	B	C	Y
SPUTKB-10	10	56	5	1
SPUTKB-15	15	57	6	1.4
SPUTKB-20	20	70	9	2
SPUTKB-25	25	70.5	9.5	2.5
SPUTKB-30	30	71	10	2
SPUTKB-35	35	72	11	3
SPUTKB-40	40	77	11	3
SPUTKB-50	50	78	12	4
SPUTKB-60	60	93	16	5
SPUTKB-80	80	95	18	6
SPUTKB-100	100	95	18	6
SPUTKB-120	120	128	23	8
SPUTKB-150	150	130	25	10
SPUTKB-200	200	140	29	12

# 摇摆型吸盘附固定式金属底座 Swivel Type Vacuum Pad with Locking Fittings SPUTKB / SPUYKB Series

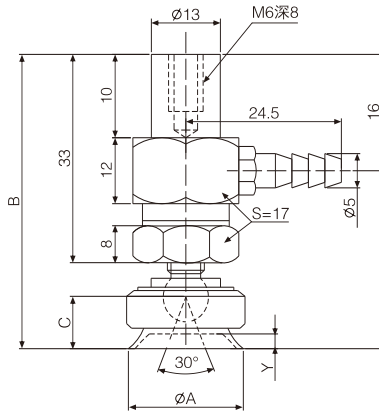
## Dimensions(mm)(尺寸规格(毫米))

### Lateral Direction Connection(水平方向连接) • SPUYKB

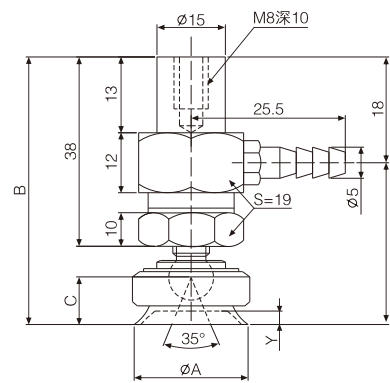
Pad Diameters (适合吸盘直径)  
Φ10 • Φ15



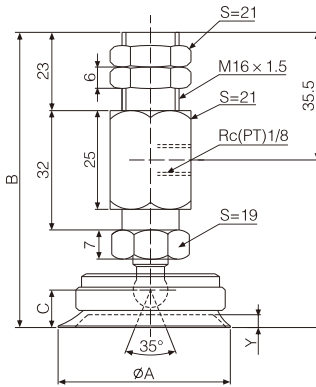
Pad Diameters (适合吸盘直径)  
Φ20 • Φ25 • Φ30 • Φ35



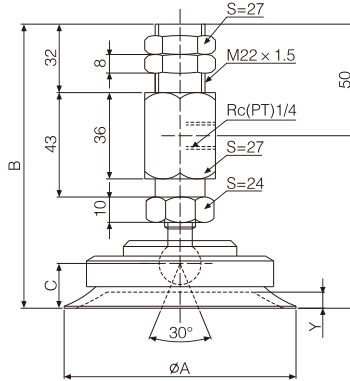
Pad Diameters (适合吸盘直径)  
Φ40 • Φ50



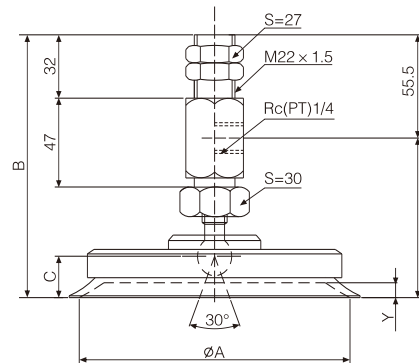
Pad Diameters (适合吸盘直径)  
Φ60 • Φ80 • Φ100



Pad Diameters (适合吸盘直径)  
Φ120 • Φ150



Pad Diameters (适合吸盘直径)  
Φ200



S:Width Across Flats(六角对边尺寸)

SPUYKB(规格)	A	B	C	Y
SPUYKB-10	10	36.5	5	1
SPUYKB-15	15	37.5	6	1.4
SPUYKB-20	20	49	9	2
SPUYKB-25	25	49.5	9.5	2.5
SPUYKB-30	30	50	10	2
SPUYKB-35	35	51	11	3
SPUYKB-40	40	59	11	3
SPUYKB-50	50	60	12	4
SPUYKB-60	60	93	16	5
SPUYKB-80	80	95	18	6
SPUYKB-100	100	95	18	6
SPUYKB-120	120	128	23	8
SPUYKB-150	150	130	25	10
SPUYKB-200	200	140	29	12