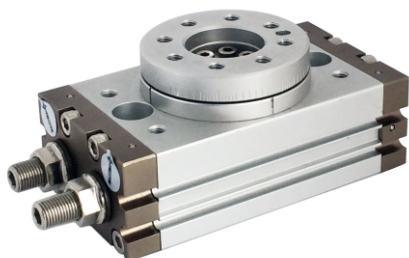


转台式回转摆动气缸/齿杆型 Rotary Table/ Rack& Pinion Type

TMSQ Series



Feature (特征)

- Rotary cylinder by double piston method of RACK & PINION
- Variety of attachment method
- Higher output than other rotary cylinder
- Easy wire arrangement by hollow shaft
- Possible to mount shock absorbers
- Possible to mount auto switches
- 转台齿杆式双活塞摆动气缸
- 安装方式多样
- 比其他气缸输出力高
- 中空轴排线方便
- 可配缓冲器
- 可配磁性开关

How To Order (型号表示方法)

TMSQ A 25 A - M9B S

Type 类型	Bore 缸径	Option 可选项	*Auto Switch 磁性开关	No. of Auto Switch 磁性开关数量
A High Precision Type(高精度型) (适合缸径Ø15~Ø25)	15, 18, 21 25, 28, 32, 40	A With Adjustment Bolt(角度调整螺钉) R With Internal Shock Absorber(带液压缓冲器)	Nil(空) None (无磁性开关) M9B Reed Switch(带有接点磁性开关) M9NP Contactless Switch(无接点磁性开关)	Nil(空) 2(个) S 1(个)
B Basic Type(基本型) (适合缸径Ø15~Ø40)				

*Auto Switch(磁性开关)
引线长度表示记号:
无记号-1m(标准)
L-3m
Z-5m

Specification (规格)

Type(型号)	TMSQ15	TMSQ18	TMSQ21	TMSQ25	TMSQ28	TMSQ32	TMSQ40	
Rotation Angle(回转角度)	0~190°							
Cushion Angle(缓冲角度)	-							
Cushion Type(缓冲)	Rubber Cushion (橡胶)/Shock Absorber(液压缓冲)							
Allowable Energy (允许动能)(kgf·cm)	With Adjustment Bolt(角度调整螺钉)	0.07	0.25	0.48	0.81	2.4	3.2	5.6
	With Internal Shock Absorber(带液压缓冲器)	0.39	1.16	1.16	2.94	11	16	29
Max. Weight(本体重量)(kgf)	0.57	1.09	1.29	2.26	2.89	4.10	7.65	
Air Port Size(接管口径)	M5	M5	PT1/8	PT1/8	PT1/8	PT1/8	PT1/8	
Working Fluid(使用流体)	Clean Air(洁净空气)(注1)							
Operating Pressure(使用压力)(kgf/cm ²)	带角度调整螺钉型0.1~1Mpa,带液压缓冲器型0.1~0.6Mpa(TMSQA15为0.2~0.6Mpa)							
Lubrication(润滑)	No need(If need,use1)(不需要给油时透平1号ISOVG32)							
Temperature(使用温度)(°C)	0~60°							
Motion Type(工作方式)	Double Acting Type(双动)							
Accuracy(精度)(mm)	±0.05							
Auto Switch(磁性开关)	(Auto switch of direct contact type)(有接点磁性开关)							

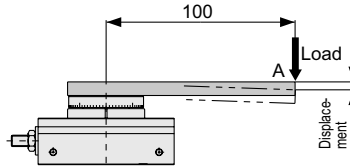
Note 1) Clean Air is contained solidity of 99.9% fluid oil and 0.3% supersaturated wet through filtering 3~10µm
注1:洁净空气:用3~10µm过滤器过滤掉99.9%水份和液体油含0.3%固体物的洁净空气。

转台式回转摆动气缸/齿杆型 Rotary Table/ Rack & Pinion Type

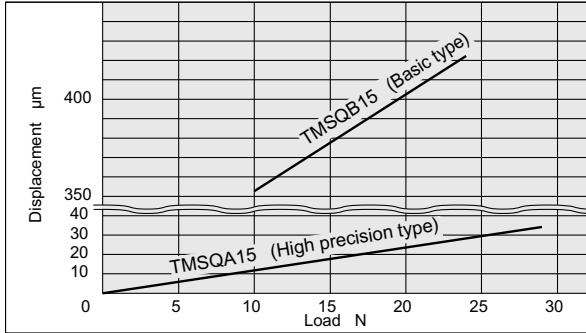
TMSQ Series

Table Displacement (Reference values)(位移参数值)

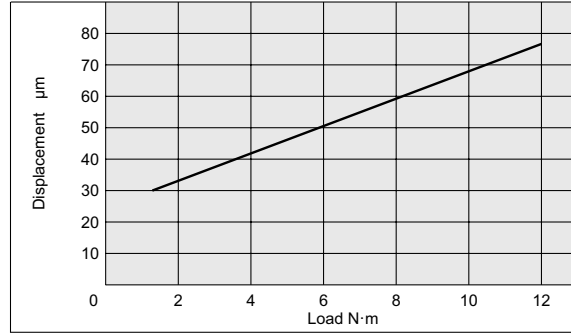
The following graphs show the displacement at point A, which is 100 mm apart from the center of rotation, where the load is applied.
(A点的位移量与负载的关系图如下表)



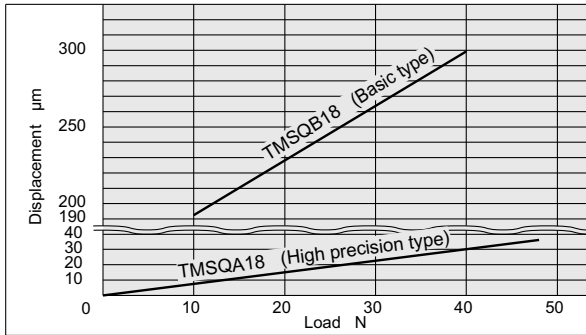
TMSQ 15



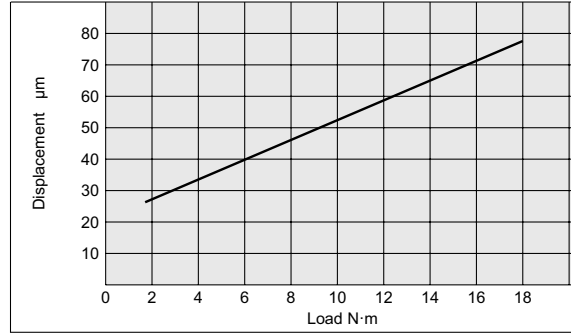
TMSQB28



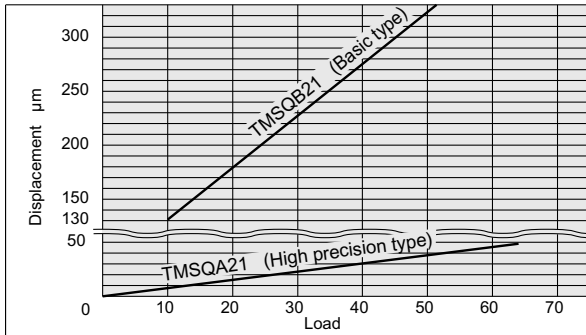
TMSQ 18



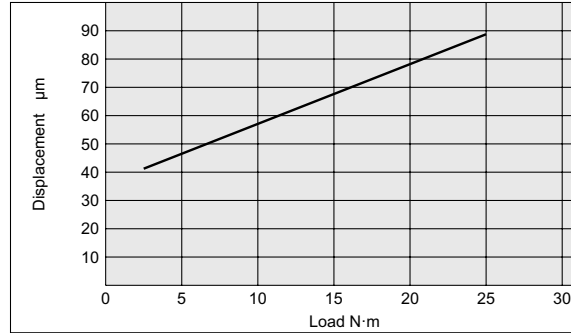
TMSQB32



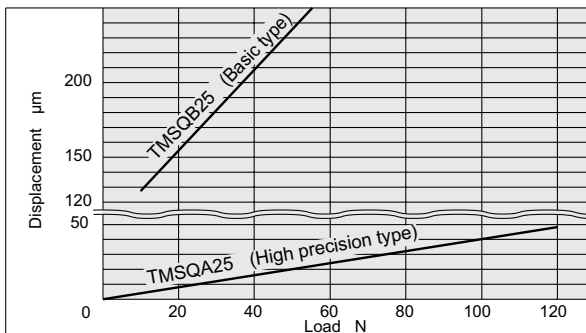
TMSQ 21



TMSQB40



TMSQ 25



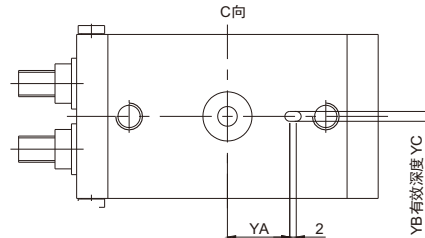
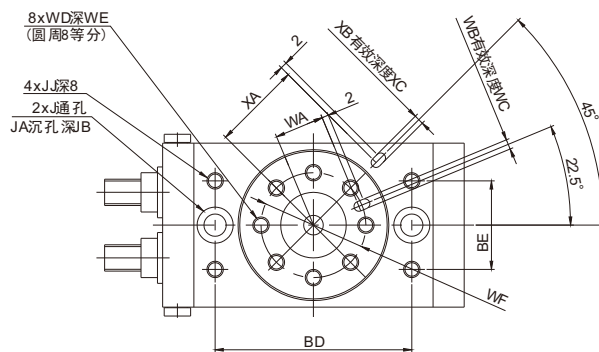
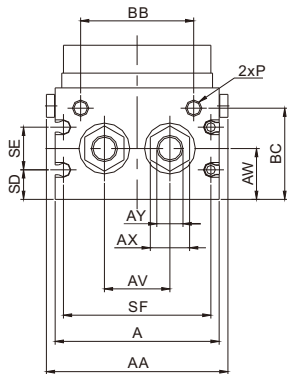
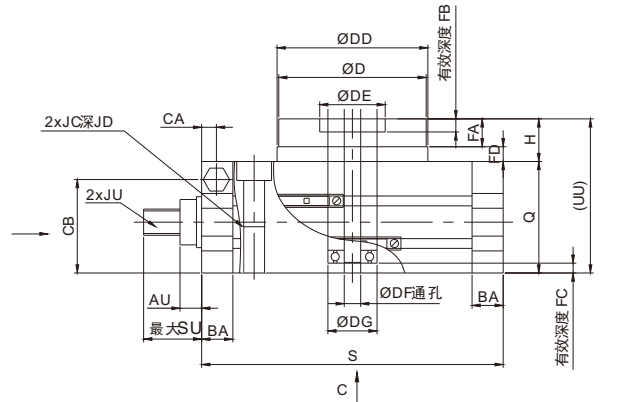
转台式回转摆动气缸/齿杆型 Rotary Table/ Rack& Pinion Type

TMSQ Series

Dimensions(mm)(外形尺寸图(毫米))

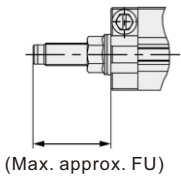
Basic Type(基本型)(Ø15 ~ Ø25)

TMSQB□A

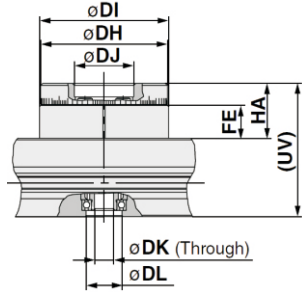


带液压缓冲器
TMSQA□R
TMSQB□R

高精度型
TMSQA□A
TMSQA□R



规格	FU
10	31.5
20	34.7
30	34.7
50	51.7



规格	DH	DI	DJ	DK	DL	FE	HA	UV
Ø15	45h8	46h8	20H8	5	15H8	10	18.5	52.5
Ø18	60h8	61h8	28H8	9	17H8	15.5	26	63
Ø21	65h8	67h8	32H8	9	22H8	16.5	27	67
Ø25	75h8	77h8	35H8	10	26H8	17.5	30	76

规格	AA	A	AU	AV	AW	AX	AY	BA	BB	BC	BD	BE	CA	CB	D	DD	DE	DF	DG	FA	FB	FC	FD	H	J	JA	JB
Ø15	55.4	50	8.6	20	15.5	12	4	9.5	34.5	27.8	60	27	4.5	28.5	45h9	46h9	20H9	5	15H9	8	4	3	4.5	13	6.8	11	6.5
Ø18	70.8	65	10.6	27.5	16	14	5	12	46	30	76	34	6	30.5	60h9	61h9	28H9	9	17H9	10	6	2.5	6.5	17	8.6	14	8.5
Ø21	75.4	70	10.6	29	18.5	14	5	12	50	32	84	37	6.5	33.5	65h9	67h9	32H9	9	22H9	10	4.5	3	6.5	17	8.6	14	8.5
Ø25	85.4	80	14	38	22	19	6	15.5	63	37.5	100	50	10	37.5	75h9	77h9	35H9	10	26H9	12	5	3	7.5	20	10.5	18	10.5

规格	JC	JD	JJ	JU	P	Q	S	SD	SE	SF	SU	UU	WA	WB	WC	WD	WE	WF	XA	XB	XC	YA	YB	YC
Ø15	M8x1.25	12	M5x0.8	M8x1	M5x0.8	34	92	9	13	45	17.7	47	15	3H9	3.5	M5x0.8	8	32	27	3H9	3.5	19	3H9	3.5
Ø18	M10x1.5	15	M6x1	M10x1	M5x0.8	37	117	10	12	60	25	54	20.5	4H9	4.5	M6x1	10	43	36	4H9	4.5	24	4H9	4.5
Ø21	M10x1.5	15	M6x1	M10x1	Rc1/8	40	127	11.5	14	65	25	57	23	4H9	4.5	M6x1	10	48	39	4H9	4.5	28	4H9	4.5
Ø25	M12x1.75	18	M8x1.25	M14x1.5	Rc1/8	46	152	14.5	15	75	31.4	66	26.5	5H9	5.5	M8x1.25	12	55	45	5H9	5.5	33	5H9	

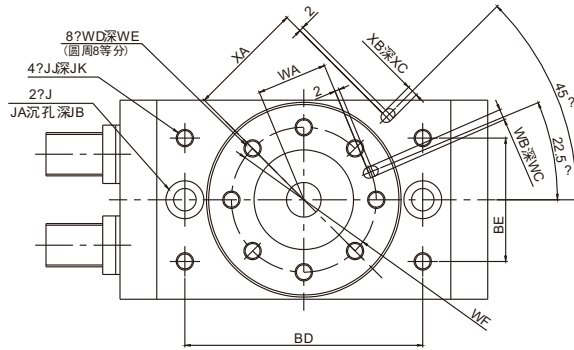
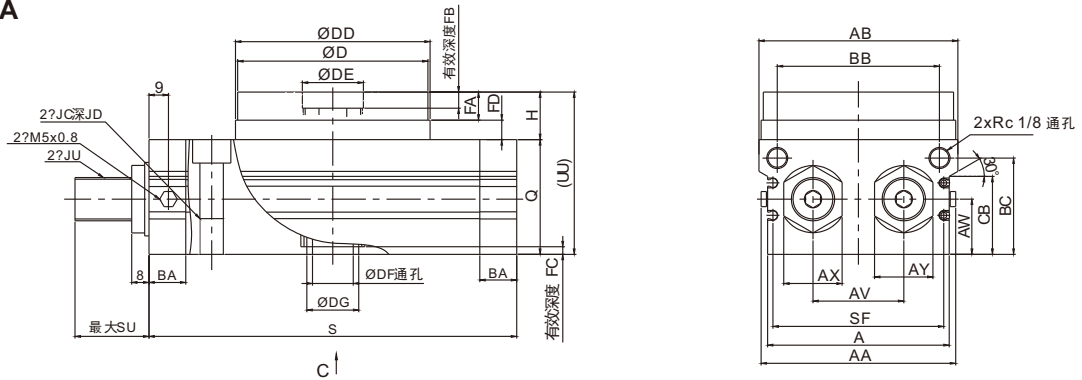
转台式回转摆动气缸/齿杆型 Rotary Table/ Rack & Pinion Type

TMSQ Series

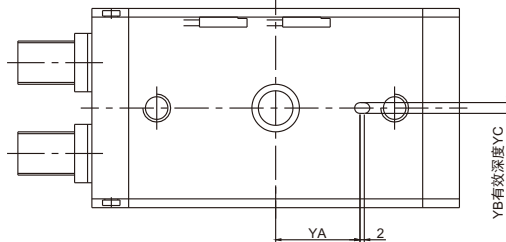
Dimensions(mm)(外形尺寸图(毫米))

Basic Type(基本型)($\varnothing 28 \sim \varnothing 40$)

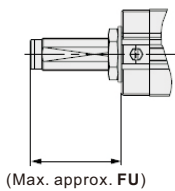
TMSQB□A



C向



带液压缓冲器 TMSQB□R



规格	FU
70	55.4
100	55.5
200	79.5

(mm)

规格	AA	AB	A	AV	AW	AX	AY	BA	BB	BC	BD	BE	CB	D	DD	DE	DF	DG	FA	FB	FC	FD	H	J	JA	JB
$\varnothing 28$	90	92	84	42	25.5	27	8	17	75	44.5	110	57	36	88h9	90h9	46H9	16	22H9	12.5	5	3.5	9	22	10.4	17.5	10.5
$\varnothing 32$	101	102	95	50	29.5	27	8	17	85	50.5	130	66	42	98h9	100h9	56H9	19	24H9	14.5	6	3.5	12	27	10.4	17.5	10.5
$\varnothing 40$	119	120	113	60	36.5	36	10	24	103	65.5	150	80	57	116h9	118h9	64H9	24	32H9	16.5	9	5.5	15	32	14.2	20	12.5

(mm)

规格	JC	JD	JJ	JK	JU	Q	S	SD	SF	SU	UU	WA	WB	WC	WD	WE	WF	XA	XB	XC	YA	YB	YC
$\varnothing 28$	M12x1.75	18	M8x1.25	10	M20x1.5	53	170	18	79	34.2	75	32.5	5H9	5.5	M8x1.25	12.5	67	54	5H9	3.5	39	5H9	3.5
$\varnothing 32$	M12x1.75	18	M8x1.25	10	M20x1.5	59	189	22	90	34.3	86	37.5	6H9	6.5	M10x1.5	14.5	77	59	6H9	4.5	49	6H9	4.5
$\varnothing 40$	M16x2	25	M12x1.75	13	M27x1.5	74	240	29	108	40.2	106	44	8H9	8.5	M12x1.75	16.5	90	69	8H9	4.5	54	8H9	6.5