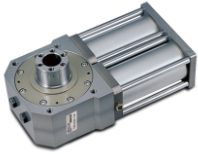


高负载回转摆动气缸 Rotary Cylinder

TRCH Series

Feature(特征)



- Rotary cylinder with combination of air and oil due to connecting 2 sets of piston by chain
- High moment due to structure of high load and high-strength
- In low speed, smooth rotation by hydro check
- In case of fine oil leakage, preventing back flash on rotary by check valve
- For higher position detecting function of rotary part, mount stoppers on the out side
- Easier wire, pipe arrangement and combination with other machine due to hollow
- Hole of shaft
- Possible to mount auto switches
- Suitable for pick & place process of FA assembly & feeding line
- 以输出轴为中心, 2个活塞相连而成, 可以组合回转运动
- 高负载, 高强度, 高力距
- 根据液压制动原理在低速领域也能圆滑稳定摆动
- 即使有微小的泄漏, 由于内置单向阀可以使齿间隙成为零
- 可配磁性开关
- 适用于移送线体的反转操作

How To Order(型号表示方法)

TRCH 40 - 90 - RS2

Bore 缸径	Rotation Angle 摆动角度	Auto Switch 磁性开关
40, 63, 80	90° 90° 180° 180°	Nil(空) None (无磁性开关) RS1 Switch 1EA(磁性开关1只) RS2 Switch 2EA(磁性开关2只)

Specification(规格)

Type(型号)	TRCH40-90	TRCH40-180	TRCH60-90	TRCH60-180	TRCH80-90	TRCH80-180
Cylinder Bore Size(缸径)(mm)	40		63		80	
Rotation Angle(回转角度)	90°	180°	90°	180°	90°	180°
Cushion Angle(缓冲角度)	Within single-angle 35° 偏侧角度35° 范围					
Cushion Type(缓冲)	Hydro Cushion(Adjustable)液压缓冲(调节式)					
Torque(理论力矩)(kgf.cm)*注2	28xP		80xP		171xP	
Allowable Energy(允许动能)(kgf.cm)	7.5		19		25	
Weight(本体重量)(kgf)	6.0	6.5	11.5	12.0	18.5	21
Air Port Size(接管口径)	PT1/8		PT1/4		PT1/4	
Max.Radial Load(最大横向负载)(kgf)	47		65		80	
Max.Thrust Load(最大轴向负载)(kgf)	14		19		24	
Rotation Time(回转时间)(sec)	0.5~2.5	0.7~3.0	0.7~3.5	1.0~4.0	1.5~4.0	2.0~5.0
Working Fluid(使用流体)	Clean Air(洁净空气)(*注1)					
Operating Pressure(使用压力)(kgf/cm ²)	(1.5~7) General resistance pressure:10.5 (1.5~7(普通耐压:10.5))					
Lubrication(润滑)	Not Required(不需要)(*注3)					
Temperature(使用温度)(°C)	5~60					
Motion Type(工作方式)	Double Acting Type(Structure: Rotary work by chain&spracket wheel and hydro checker)(双动)					
Accuracy(精度)(mm)	± 0.1					
Auto Switch(磁性开关)	APC(Auto switch of direct contact type)(有接点磁性开关)					

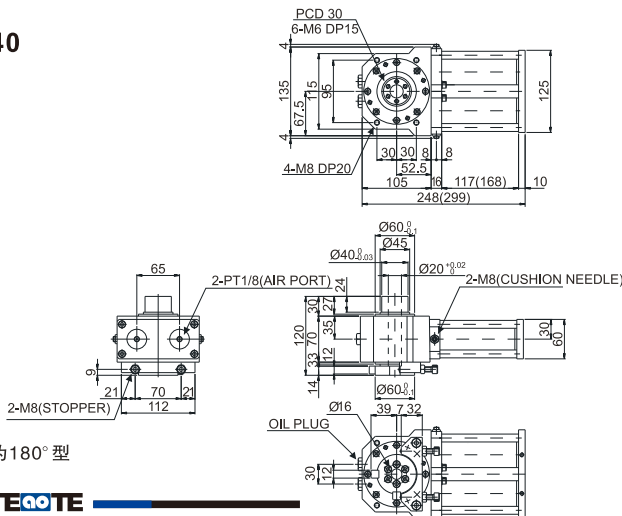
Note 1) Clean Air is contained solidly of 99.9% fluid oil and 0.3% supersaturated wet through filtering 3~10µm.
(洁净空气:用3~10µm过滤器,过滤掉99.9%水份和液体油含0.3%固体物的洁净空气)

Note 2) Effective torque should be less than theoretical torque. (实际力矩是理论力矩的60%)

Note 3) Please Use Turbine Oil 1st-Grade ISOVG32, If Necessary. (如需要润滑, 请用透平1号油ISOVG32)

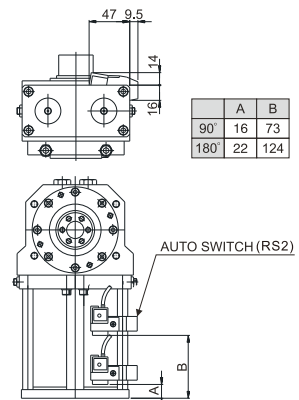
Dimensions(mm)(外形尺寸图(毫米))

TRCH40



(*)内的尺寸为180°型

TRCH40-RS2



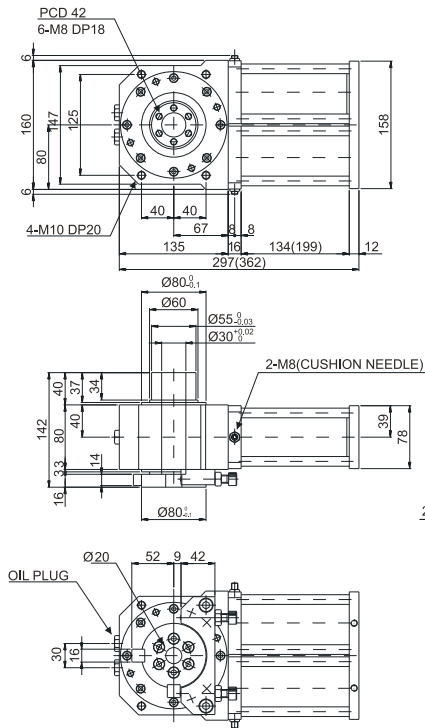
Please contact us on any small problem and details.
更详细的图以及问题, 请直接与本公司联络。

高负载回转摆动气缸 Rotary Cylinder

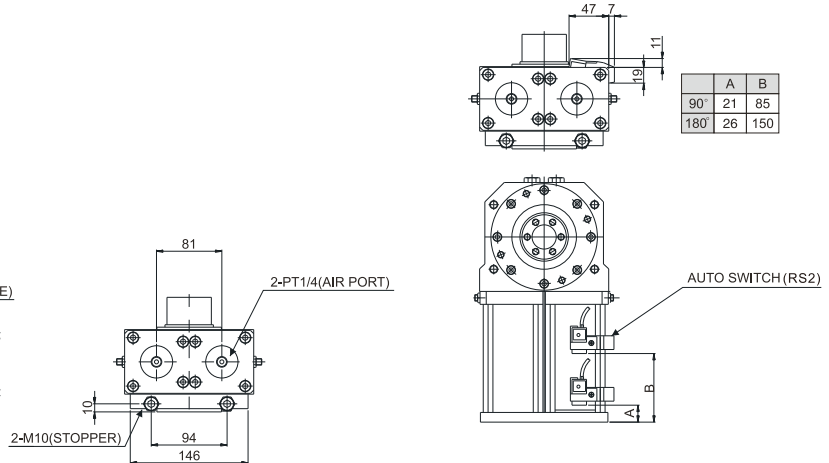
TRCH Series

Dimensions(mm)(外形尺寸图(毫米))

TRCH60



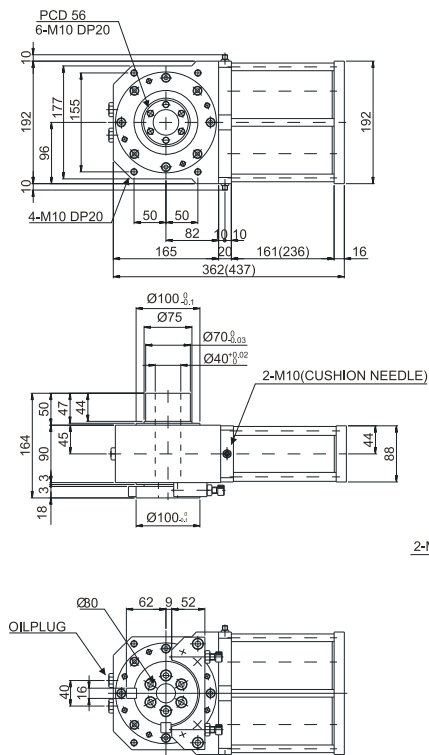
TRCH60-RS2



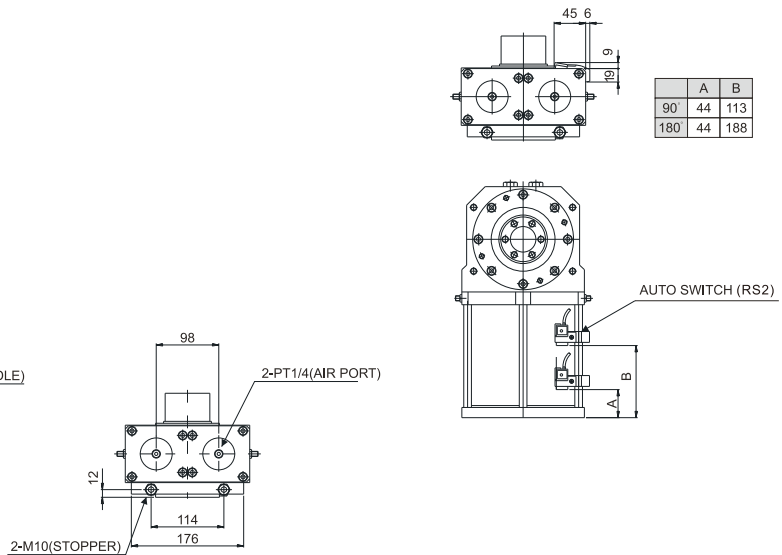
*()内的尺寸为180°型

Dimensions(mm)(外形尺寸图(毫米))

TRCH80



TRCH80-RS2



*()内的尺寸为180°型