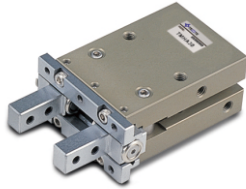


# 标准型平行开闭气动手指 Air Chuck

## TMHA Series

### Feature (特征)



- Parallel open & close motion type by crank lever
- Accurate open & close motion by cross roller bearing guide on sliding part of jaw
- Durability due to high accuracy & high strength structure
- Possible to move on condition of low pressure(1kgf/cm<sup>2</sup>)
- Variety of attachment method
- Possible to mount auto switches
- 平行开闭型
- 采用滚珠轴承,可精确操作开闭
- 高精度高强度结构
- 在低压(kgf/cm<sup>2</sup>)可启动
- 安装多样化
- 可配磁性开关

### How To Order (型号表示方法)

TMHA 10 - RS2

Bore 缸径	6, 10, 16, 20, 25, 30
------------	-----------------------

Auto Switch 磁性开关	Nil(空) None (无磁性开关)
	RS1 Switch 1EA(磁性开关1只)
	RS2 Switch 2EA(磁性开关2只)

### Specification (规格)

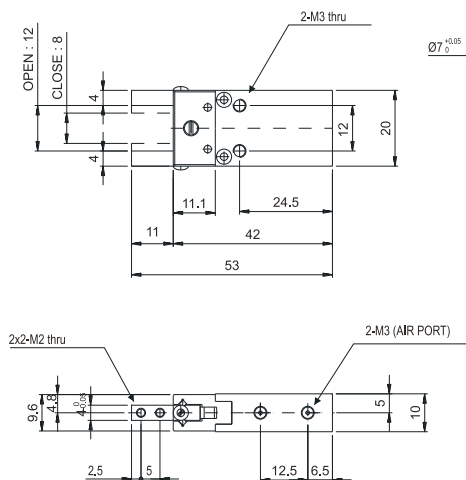
Type(型号)	TMHA6	TMHA10	TMHA16	TMHA20	TMHA25	TMHA30	
Cylinder Bore Size(缸径)(mm)	6	12	16	20	25	30	
Stroke(开闭行程)(mm)	4	6	8	12	16	24	
Gripping Force(理论把持力)(kgf)	关	0.84	3.42	8.16	12	20.1	30.5
Air pressure(使用压力)(5kgf/cm <sup>2</sup> )	开	1.12	4.57	9.49	14	24	36.3
Air Port Size(接管口径)	M3	M3	M5	M5	M5	M5	
Weight(本体重量)(kgf)	0.027	0.059	0.14	0.27	0.5	0.7	
Allowable Length of Soft Jaw L(允许距离)(mm)	20	30	40	50	60	80	
Displacement of Soft Jaw L(变位量M)(mm)	10	12	15	25	35	40	
Working Fluid(使用流体)	Clean Air(洁净空气)(*注1)						
Operating Pressure(使用压力)(kgf/cm <sup>2</sup> )	(1.5~7) General resistance pressure:10.5 (1.5~7 (普通耐压:10.5))						
Lubrication(润滑)	Not Required(不需要)(*注2)						
Temperature(使用温度)(°C)	5~60						
Accuracy(反复开闭位置精度)(mm)	±0.01						
Max.Cycle per Minute(最高使用回数)(C.P.M)	140						
Motion Type(工作方式)	Double Acting Type(双动)(Structure(机构部):Paralled open & close motion type by CRANK LEVER(方式平行开闭>Loading part(移送部):CROSS ROLLER BEARING GUIDE						
Auto Switch(磁性开关)	RS2 (Auto switch of direct contact type)(有接点磁性开关)						

Note 1) Clean Air is contained solidity of 99.9% fluid oil and 0.3% supersaturated wet through filtering 3~10µm  
(洁净空气:用3~10µm过滤器,过滤掉99.9%水份和液体油含0.3%固体物的洁净空气.)

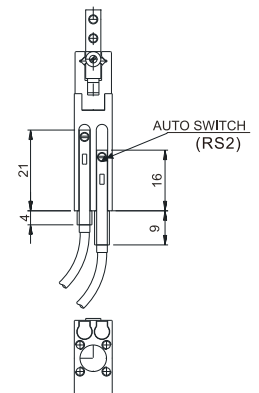
Note 2) Please Use Turbine Oil 1st-Grade ISOVG32,If Necessary. (如需要润滑,请用透平1号油ISOVG32.)

### Dimensions(mm)(外形尺寸图(毫米))

#### TMHA6

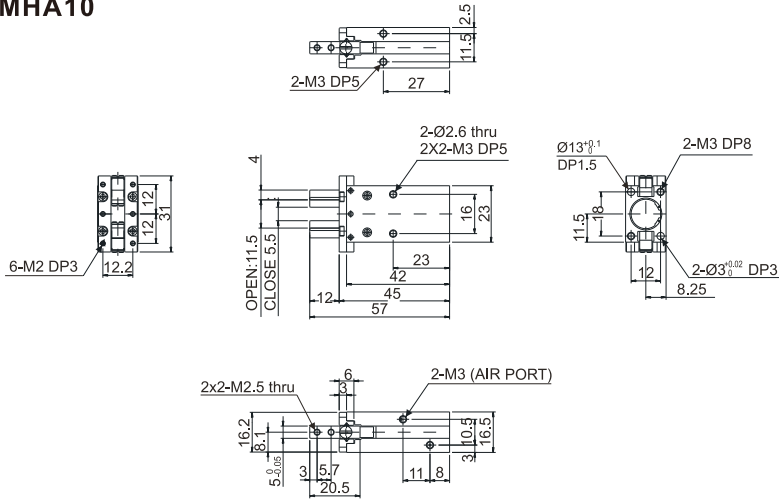


#### TMHA6-RS2

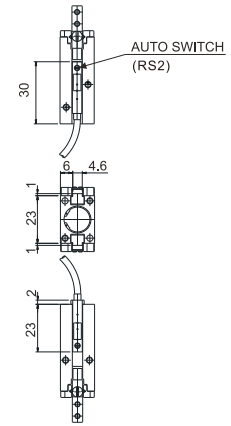


### Dimensions(mm)(外形尺寸图(毫米))

#### TMHA10

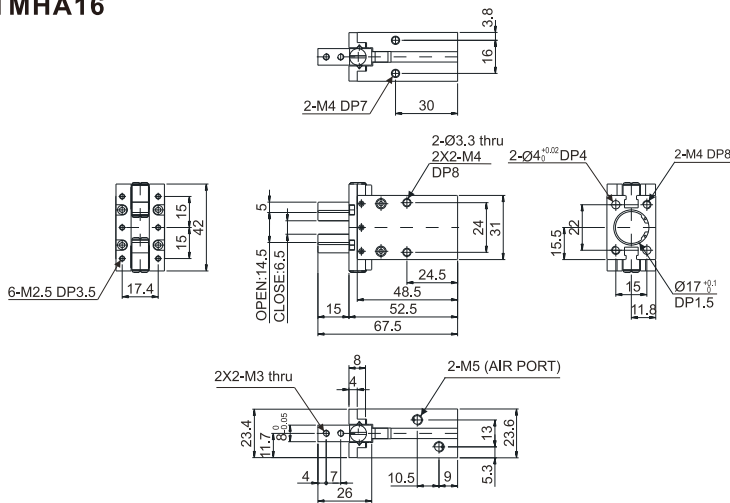


#### TMHA10-RS2

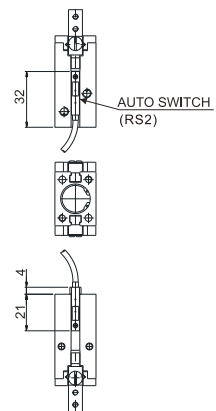


### Dimensions(mm)(外形尺寸图(毫米))

#### TMHA16

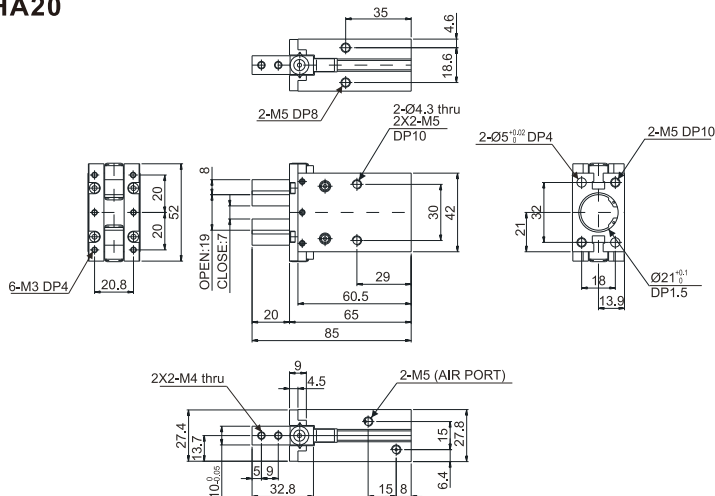


#### TMHA16-RS2

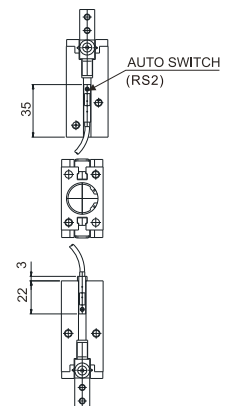


### Dimensions(mm)(外形尺寸图(毫米))

#### TMHA20



#### TMHA20-RS2

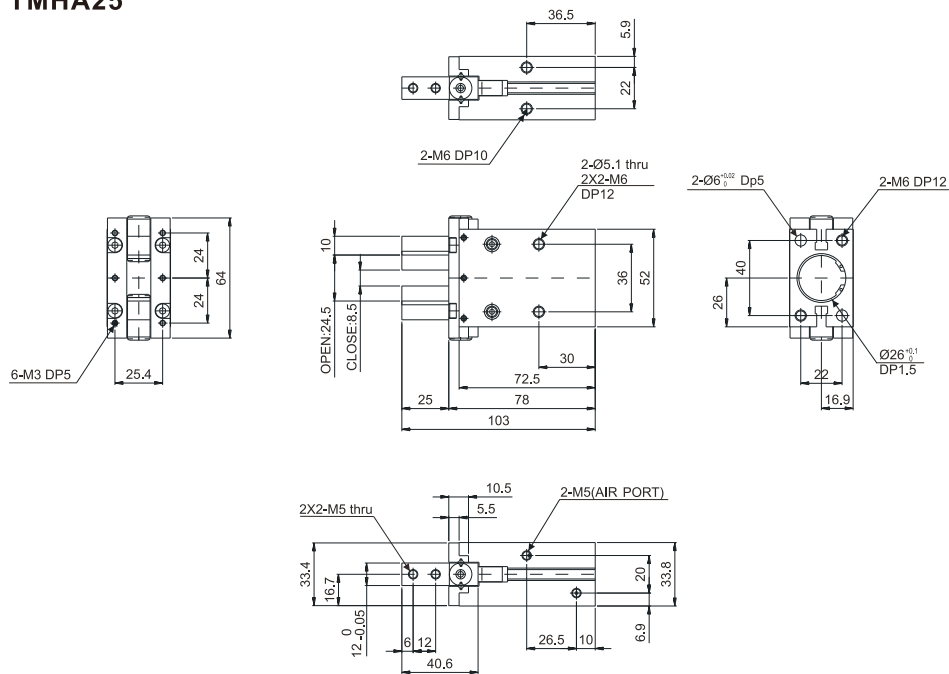


# 标准型平行开闭气动手指 Air Chuck

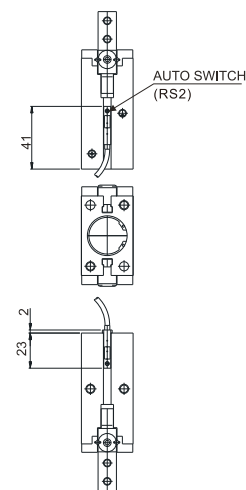
## TMHA Series

### Dimensions(mm)(外形尺寸图(毫米))

#### TMHA25

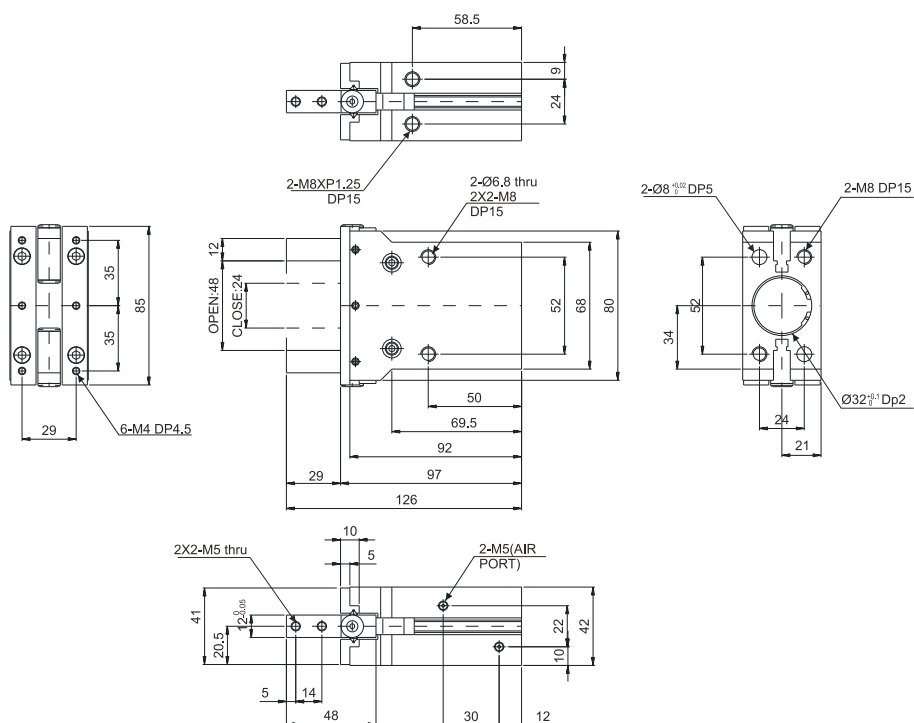


#### TMHA25-RS2



### Dimensions(mm)(外形尺寸图(毫米))

#### TMHA30



#### TMHA30-RS2

