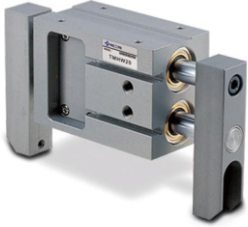


宽型平行开闭型气动手指 General Hand

TMHW Series



Feature (特征)

- Wide type hand of parallel open & close by link lever
- Extensive handing due to horizontal open & close motion with center point of cylinder body
- TMHW6, TMHW10 is responded open & close motion more accurately due to using cross roller bearing on the guide
- Possible to mount auto switches(Except TMHW6, TMHW10)
- 宽幅型平行开闭气爪
- TMHW6, TMHW10导向部位采用滚珠轴承, 因此可以进行精确的操作
- 可配磁性开关(TMHW6, TMHW10 除外)

How to order (型号表示方法)

TMHW 10 - RS2

Bore 缸径	Auto Switch 磁性开关
6, 10, 20, 30, 40, 50	Nil(空) None (无磁性开关)
	RS1 Switch 1EA(磁性开关1只)
	RS2 Switch 2EA(磁性开关2只)

Specification (规格)

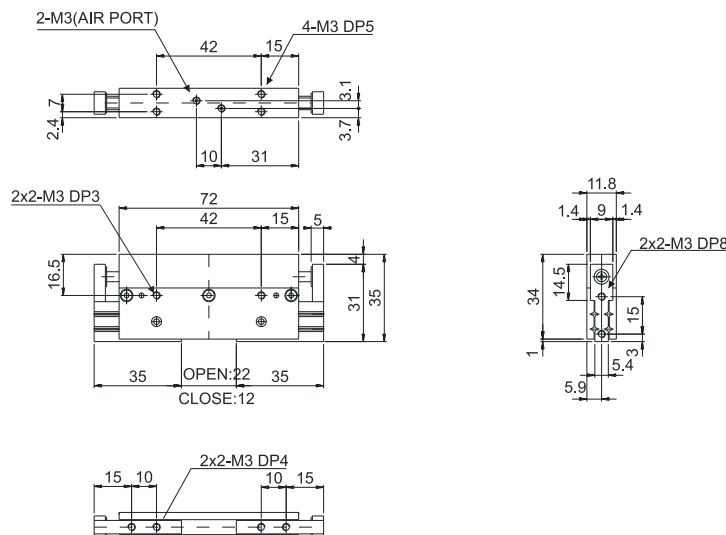
Type(型号)	TMHW6	TMHW10	TMHW20	TMHW30	TMHW40	TMHW50
Cylinder Bore Size(缸径)(mm)	6	10	20	30	40	50
Stroke(开闭行程)(mm)	10	20	30	40	80	100
Gripping Force(理论把持力)(kgf)	1.3	2.1	8.8	18.8	28	53
Air pressure(使用压力)(5kgf/cm ²)						
Air Port Size(接管口径)	M3	M3	PT1/8	PT1/8	PT1/8	PT1/8
Weight(本体重量)(kgf)	0.18	0.3	0.9	2.1	5.2	10.1
Allowable Length of Soft Jaw L(允许距离)(mm)	20	35	50	80	100	130
Working Fluid(使用流体)	Clean Air(洁净空气)(*注1)					
Operating Pressure(使用压力)(kgf/cm ²)	(3~7) General resistance pressure:10.5 (3~7 (普通耐压:10.5))					
Lubrication(润滑)	Not Required(不需要)(*注2)					
Temperature(使用温度)(°C)	5~60					
Accuracy(精度)(mm)	±0.02			±0.1		
Max.Cycle per Minute(最高使用回数)(C.P.M)	80			60		
Motion Type(工作方式)	Double-acting type (双动)(Structure:Parallel open&close General Hand by Crank Lever)(平行开闭)(Sliding Part:Metal Guide)					
Tolerance Of Opne&close Stroke(mm)(开闭行程公差)	Open(开):-0.5~+1,close(闭):-1~+0.5					

Note 1) Clean Air is contained solidity of 99.9% fluid oil and 0.3% supersaturated wet through filtering 3~10µm
(洁净空气:用3~10µm过滤器,过滤掉99.9%水份和液体油含0.3%固体物的洁净空气.)

Note 2) Please Use Turbine Oil 1st-Grade ISOVG32.If Necessary. (如需要润滑, 请用透平1号油ISOVG32.)

Dimensions(mm)(外形尺寸图(毫米))

TMHW6



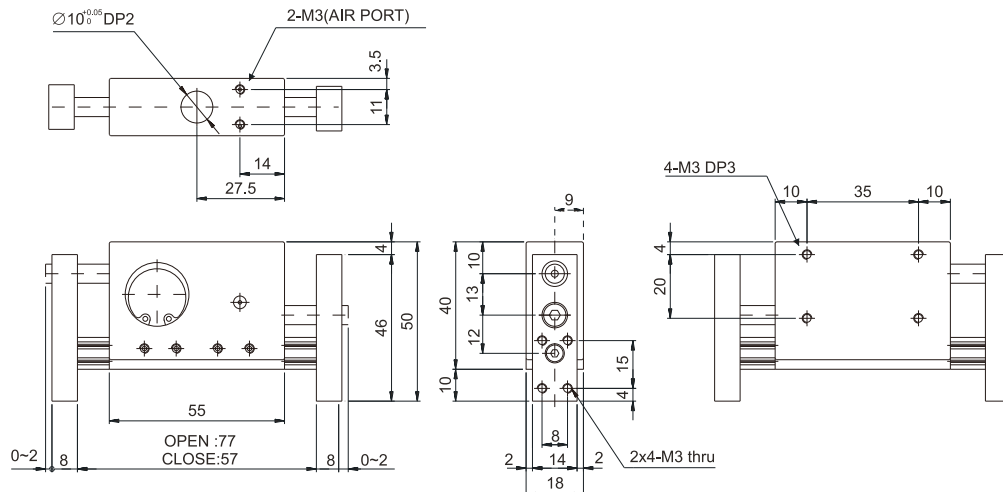
Please contact us on any small problem and details.
更详细的图以及问题, 请直接与本公司联络。

宽型平行开闭型气动手指 General Hand

TMHW Series

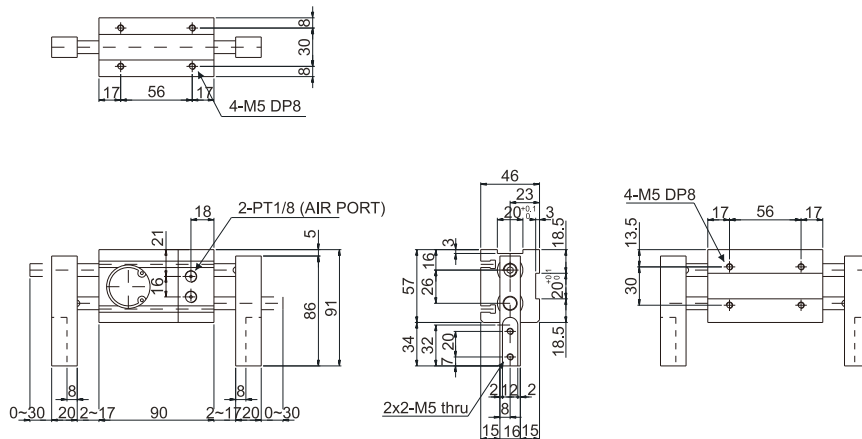
Dimensions(mm)(外形尺寸图(毫米))

TMHW10

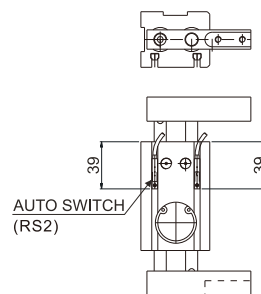


Dimensions(mm)(外形尺寸图(毫米))

TMHW20

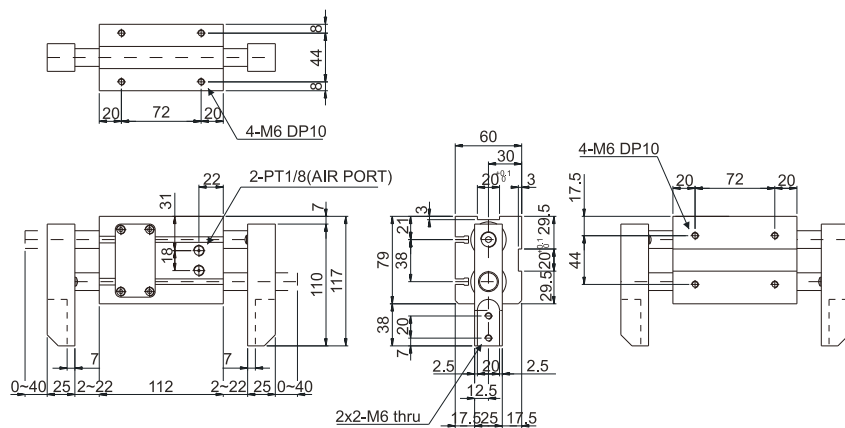


TMHW20-RS2

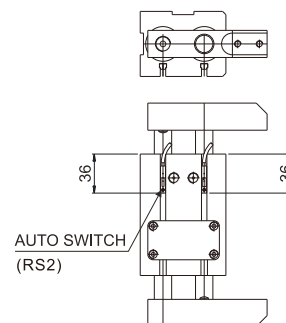


Dimensions(mm)(外形尺寸图(毫米))

TMHW30



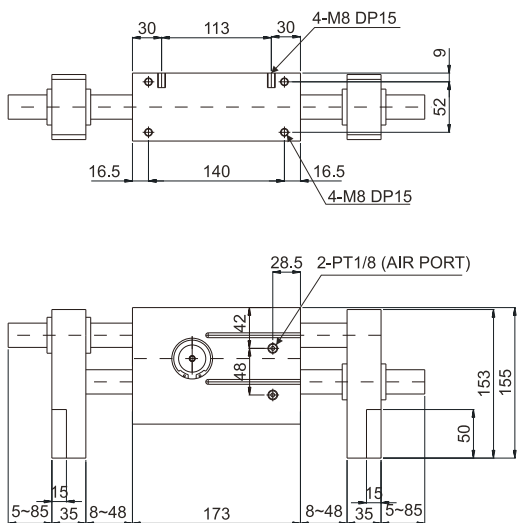
TMHW30-RS2



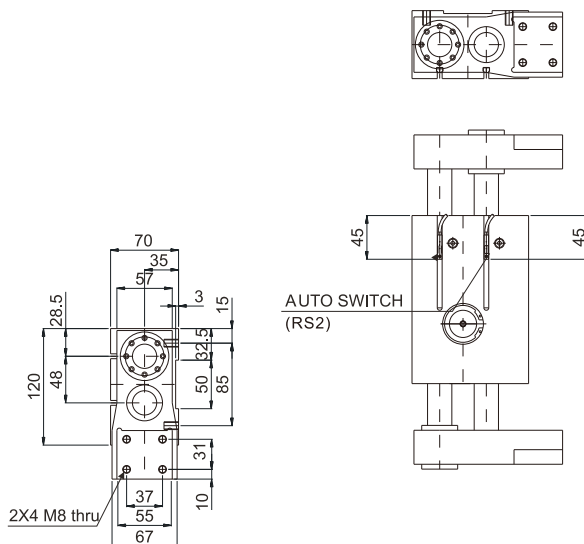
宽型平行开闭型气动手指 General Hand TMHW Series

Dimensions(mm)(外型尺寸图(毫米))

TMHW40

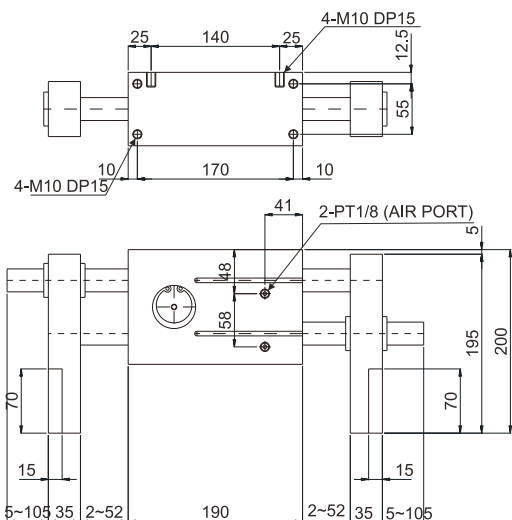


TMHW40-RS2



Dimensions(mm)(外型尺寸图(毫米))

TMHW50



TMHW50-RS2

