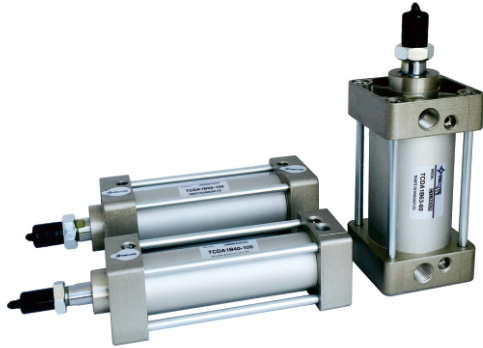


中型标准气缸 Medium Cylinder

TCA1, TCDA1(Ø40~Ø100) Series

Common Specification (共同规格)



Bore(缸径)(mm)	Ø40	Ø50	Ø63	Ø80	Ø100
Fluid(流体)	Clean Air(洁净空气)				
Action(动作形式)	Double Acting(双动)				
Proof Press.(保证耐压力)	1.5Mpa				
Max. Press.(最高使用压力)	0.99Mpa				
Min. Press.(最低使用压力)	0.05Mpa				
Amb.Temp.(环境及流体温度)	-5~+60°C(未冻结)				
Piston Speed(活塞速度)	50~500mm/s				
Cushion(缓冲)	Air Cushion(气缓冲)				
*Lubrication(润滑)	Lube Type(STD), Non-Lube(Optional)(油润滑型(标准), 不需要(任选))				
Stroke Tolerance(行程公差)	~250: $^{+1.0}_0$		251~1000: $^{+1.4}_0$		1000~1500: $^{+1.8}_0$
Pipe Size(接管口径)Rc(PT)	1/4"	3/8"	3/8"	1/2"	1/2"

* Use Tubine Oil 1st-Grade ISOVG32, If Necessary(如需要润滑请用透平1号油ISOVG32)

How To Order (型号表示方法)

40,50,63,80,100 Please refer to the table. 请参考行程表

Bore 缸径	Stroke 行程	*Gaiter Material 伸缩保护套材质	Accessory 附件
-------------------	---------------------	------------------------------------	------------------------

Nil(无记号) None(无)
 J Nylon Tarpaulin(尼龙防水帆布)(60°C)
 K Neoprene(氯丁橡胶外层)(110°C)

I I Type Knuckle Joint (I型单肘接头)
 Y Y Type Knuckle Joint (Y型双肘接头)

TC D A1 B Q 40 - 100 N J Y - M9B S

Magnet 有无磁环	Mounting 附件安装方式	Cushion 缓冲	*Auto Switch 磁性开关	No. of Auto Switch 磁性开关数量
Nil(空) None(无磁环) D Built-in Magnet(有磁环)	B Basic Type(基本型) L Foot Type(脚座型) F Front Flange(杆侧法兰) G Rear Flange(后法兰) C Single Clevis(单U钩型) D Double Clevis(双U钩型) E Double Clevis/Bracket(双U钩型接座) T Center Trunnion(中央轴耳) R Trunnion Bracket(轴耳接座)	Nil(空) Both Side Cushion(两侧带缓冲) N Non-cushion(无缓冲)	Nil(空) None(无磁性开关) A49 Reed Switch(带有接点磁性开关) M9B Reed Switch(带有接点磁性开关) M9NP Contactless Switch(无接点磁性开关) A54K Reed Switch(带有接点磁性开关)	Nil(空) 2(个) S 1(个) 3 3(个)

Type
类型
 Nil(空) Lube Type(油润滑型)
 N Non-Lube(无油润滑型)
 H Air Hydro(低油压型)
 S Stainless Steel Piston Rod(不锈钢活塞杆)
 V High Temperature(高温型)
 Q Low Friction(低摩擦型)

*低摩擦型总长+10mm.

* Auto Switch(磁性开关) 引线长度表示记号:
 无记号-1m(标准)
 L -3m
 Z-5m

Stroke (行程)

Bore (缸径) (mm)	STD Stroke (标准行程) (mm)	Max. Stroke (最大行程)
Ø40	25, 50, 75, 100, 125, 150, 175, 200, 250, 300, 350,	2950
Ø50	400, 450, 500, 550, 600,	
Ø63	650, 700, 750, 800, 850,	
Ø80	900, 950, 1000	
Ø100		

* Contact us for other stroke.
(非标行程请与营业员联系)

Please contact us on any small problem and details.
更详细的图以及问题, 请直接与本公司联络。

Part No. of Mounting(安装附件型号)

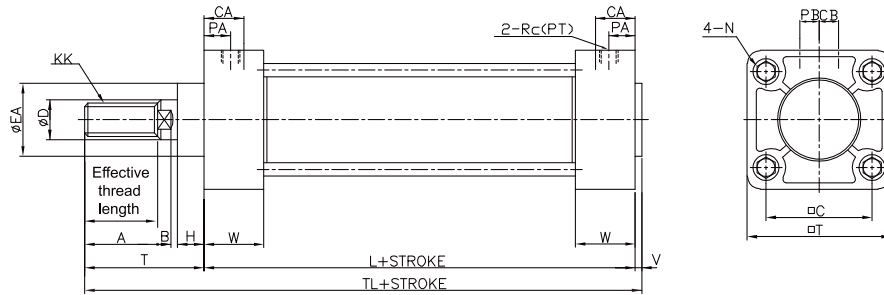
Bore(缸径)	Ø40	Ø50	Ø63	Ø80	Ø100	
Accessory (安装附件)	L	TCA1-L040	TCA1-L050	TCA1-L063	TCA1-L080	TCA1-L100
	F					
	G	TCA1-F040	TCA1-F050	TCA1-F063	TCA1-F080	TCA1-F100
	C	TCA1-C040	TCA1-C050	TCA1-C063	TCA1-C080	TCA1-C100
	D	TCA1-D040	TCA1-D050	TCA1-D063	TCA1-D080	TCA1-D100
	E	TCA1-E040	TCA1-E050	TCA1-E063	TCA1-E080	TCA1-E100
	T	TCA1-T040	TCA1-T050	TCA1-T063	TCA1-T080	TCA1-T100
	R	TCA1-R040	TCA1-R050	TCA1-R063	TCA1-R080	TCA1-R100
Accessory (连接附件)	I	TCA1-040I	TCA1-050I	TCA1-080I	TCA1-100I	
	Y	TCA1-040Y	TCA1-050Y	TCA1-080Y	TCA1-100Y	

中型标准气缸 Medium Cylinder

TCA1, TCDA1 (Ø40~Ø100) Series

Dimensions(mm)(外形尺寸图(毫米))

Basic Type(基本型) TCA1B/TCDA1B



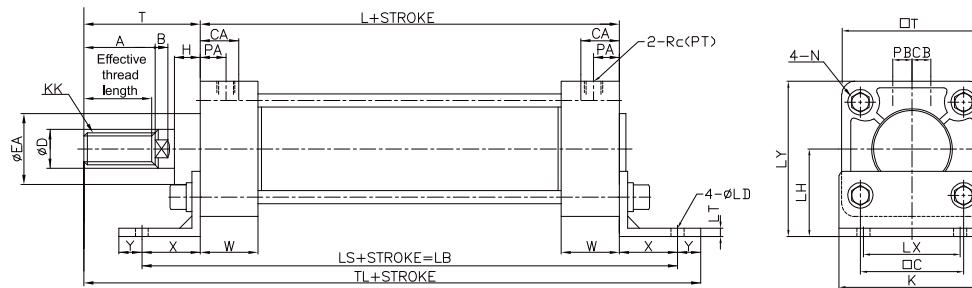
Unit : mm

Bore size	Effective thread length	A	B	□C	CA	CB	ØD	ØEA	H	KK	L	N	PA
Ø40	27	30	6	44	17.5	8.5	16	32	12	M14xP1.5	84	M8xP1.25	15.4
Ø50	32	35	7	52	19.5	11	20	40	12	M18xP1.5	90	M8xP1.25	14
Ø63	32	35	7	64	23	11	20	40	12	M18xP1.5	98	M8xP1.25	15
Ø80	37	40	11	78	24	14	25	52	17	M22xP1.5	116	M12xP1.75	17.5
Ø100	37	40	11	92	26.5	14.5	30	52	17	M26xP1.5	126	M12xP1.75	20

Bore size	PB	Rc(PT)	T	□	TL	V	W
Ø40	6.5	1/4	51	60	138	3	26
Ø50	8	3/8	58	70	151	3	27.5
Ø63	8	3/8	58	83	159	3	29.5
Ø80	13	1/2	71	102	194	7	34
Ø100	13	1/2	72	116	205	7	36.5

Dimensions(mm)(外形尺寸图(毫米))

Foot Type(基本型) TCA1L/TCDA1L



Unit : mm

Bore size	Effective thread length	A	B	□C	CA	CB	ØD	ØEA	H	K	KK	L	ØLD	LH
Ø40	27	30	6	44	17.5	8.5	16	32	12	60	M14XP1.5	84	9	40
Ø50	32	35	7	52	19.5	11	20	40	12	70	M18XP1.5	90	9	45
Ø63	32	35	7	64	23	11	20	40	12	85	M18XP1.5	98	11.5	50
Ø80	37	40	11	78	24	14	25	52	17	102	M22XP1.5	116	13.5	65
Ø100	37	40	11	92	26.5	14.5	30	52	17	116	M26XP1.5	126	13.5	75

Bore size	LS	LT	LX	LY	N	PA	PB	Rc(PT)	T	□T	TL	W	X	Y
Ø40	138	3	42	70	M8XP1.25	15.4	6.5	1/4	51	60	175	26	27	(13)
Ø50	144	3	50	80	M8XP1.25	14	8	3/8	58	70	188	27.5	27	(13)
Ø63	166	3	59	93	M8XP1.25	15	8	3/8	58	83	206	29.5	34	(16)
Ø80	204	5	76	116	M12XP1.75	17.5	13	1/2	71	102	247	34	44	(16)
Ø100	212	5	92	133	M12XP1.75	20	13	1/2	72	116	258	36.5	43	(17)

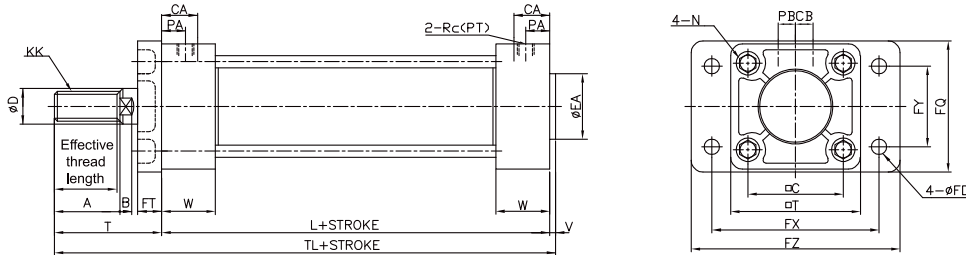
中型标准气缸

Medium Cylinder

TCA1, TCDA1(Ø40~Ø100) Series

Dimensions(mm)(外形尺寸图(毫米))

Front Flange Type(杆侧法兰型) TCA1F/TCDA1F



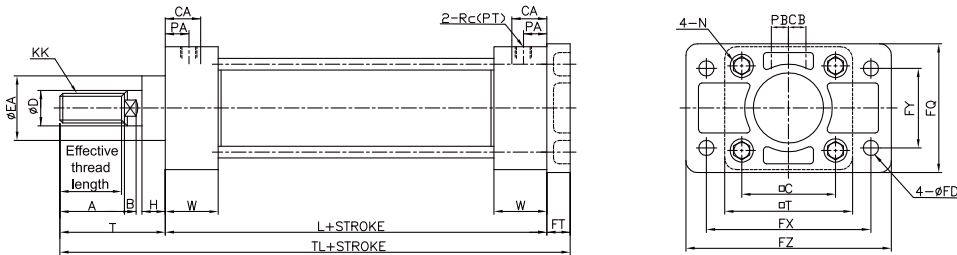
Unit : mm

Bore size	Effective thread length	A	B	□C	CA	CB	ØD	ØEA	FD	FQ	FT	FX	FY	FZ
Ø40	27	30	6	44	17.5	8.5	16	32	9	65	12	80	42	100
Ø50	32	35	7	52	19.5	11	20	40	9	75	12	90	50	110
Ø63	32	35	7	64	23	11	20	40	11.5	90	15	105	59	130
Ø80	37	40	11	78	24	14	25	52	13.5	110	18	130	76	160
Ø100	37	40	11	92	26.5	14.5	30	52	13.5	126	18	150	92	180

Bore size	KK	L	N	PA	PB	Rc(PT)	T	□T	TL	V	W
Ø40	M14xP1.5	84	M8xP1.25	15.4	6.5	1/4	51	60	138	3	26
Ø50	M18xP1.5	90	M8xP1.25	14	8	3/8	58	70	151	3	27.5
Ø63	M18xP1.5	98	M8xP1.25	15	8	3/8	58	83	159	3	29.5
Ø80	M22xP1.5	116	M12xP1.75	17.5	13	1/2	71	102	194	7	34
Ø100	M26xP1.5	126	M12xP1.75	20	13	1/2	72	116	205	7	36.5

Dimensions(mm)(外形尺寸图(毫米))

Rear Flange Type(后法兰型) TCA1G/TCDA1G



Unit : mm

Bore size	Effective thread length	A	B	□C	CA	CB	ØD	ØEA	ØFD	FQ	FT	FX	FY	FZ	H
Ø40	27	30	6	44	17.5	8.5	16	32	9	65	12	80	42	100	12
Ø50	32	35	7	52	19.5	11	20	40	9	75	12	90	50	110	12
Ø63	32	35	7	64	23	11	20	40	11.5	90	15	105	59	130	12
Ø80	37	40	11	78	24	14	25	52	13.5	110	18	130	76	160	17
Ø100	37	40	11	92	26.5	14.5	30	52	13.5	126	18	150	92	180	17

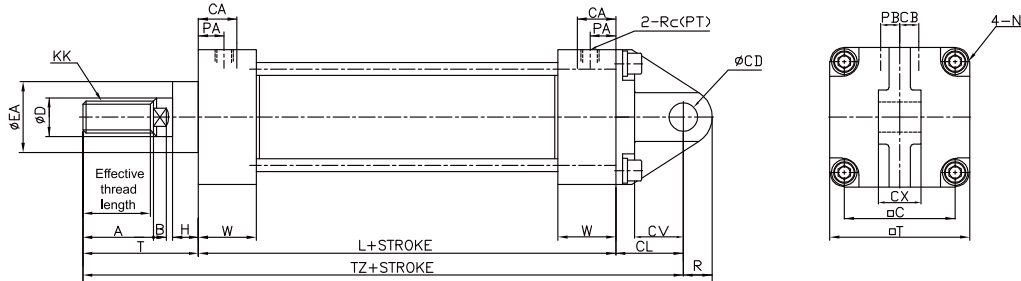
Bore size	KK	L	N	PA	PB	Rc(PT)	T	□T	TL	W
Ø40	M14xP1.5	84	M8xP1.25	15.4	6.5	1/4	51	60	147	26
Ø50	M18xP1.5	90	M8xP1.25	14	8	3/8	58	70	160	27.5
Ø63	M18xP1.5	98	M8xP1.25	15	8	3/8	58	83	171	29.5
Ø80	M22xP1.5	116	M12xP1.75	17.5	13	1/2	71	102	205	34
Ø100	M26xP1.5	126	M12xP1.75	20	13	1/2	72	116	216	36.5

中型标准气缸 Medium Cylinder

TCA1, TCDA1(Ø40~Ø100) Series

Dimensions(mm)(外形尺寸图(毫米))

Single Rear Type (单U型钩型) TCA1C / TCDA1C



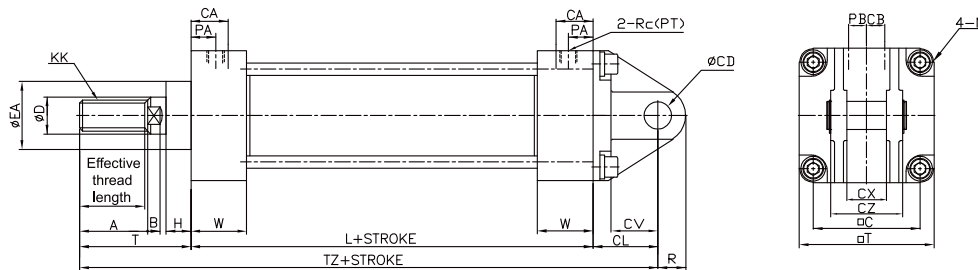
Unit : mm

Bore size	Effective thread length	A	B	□C	CA	CB	ØCD	CL	CV	CX	ØD	ØEA	H
Ø40	27	30	6	44	17.5	8.5	10 ^{+0.15} / _{+0.10}	30	18	15.0 ^{-0.1} / _{-0.3}	16	32	12
Ø50	32	35	7	52	19.5	11	12 ^{+0.15} / _{+0.10}	35	23	18.0 ^{-0.1} / _{-0.3}	20	40	12
Ø63	32	35	7	64	23	11	16 ^{+0.15} / _{+0.10}	40	27	25.0 ^{-0.1} / _{-0.3}	20	40	12
Ø80	37	40	11	78	24	14	20 ^{+0.15} / _{+0.10}	48	34	31.5 ^{-0.1} / _{-0.3}	25	52	17
Ø100	37	40	11	92	26.5	14.5	25 ^{+0.15} / _{+0.10}	58	43	35.5 ^{-0.1} / _{-0.3}	30	52	17

Bore size	KK	L	N	PA	PB	R	Rc(PT)	T	□T	TZ	W
Ø40	M14XP1.5	84	M8XP1.25	15.4	6.5	(10)	1/4	51	60	165	26
Ø50	M18XP1.5	90	M8XP1.25	14	8	(12)	3/8	58	70	183	27.5
Ø63	M18XP1.5	98	M8XP1.25	15	8	(16)	3/8	58	83	196	29.5
Ø80	M22XP1.5	116	M12XP1.75	17.5	13	(20)	1/2	71	102	235	34
Ø100	M26XP1.5	126	M12XP1.75	20	13	(25)	1/2	72	116	256	36.5

Dimensions(mm)(外形尺寸图(毫米))

Double Rear Clevis Type (双U钩型) TCA1D / TCDA1D



Unit : mm

Bore size	Effective thread length	A	B	□C	CA	CB	ØCD	CL	CV	CX	CZ	ØD	ØEA
Ø40	27	30	6	44	17.5	8.5	10 ^{+0.15} / _{+0.10}	30	18	15.0 ^{+0.1} / _{+0.3}	29.5	16	32
Ø50	32	35	7	52	19.5	11	12 ^{+0.15} / _{+0.10}	35	23	18.0 ^{+0.1} / _{+0.3}	38	20	40
Ø63	32	35	7	64	23	11	16 ^{+0.15} / _{+0.10}	40	27	25.0 ^{+0.1} / _{+0.3}	49	20	40
Ø80	37	40	11	78	24	14	20 ^{+0.15} / _{+0.10}	48	34	31.5 ^{+0.1} / _{+0.3}	61	25	52
Ø100	37	40	11	92	26.5	14.5	25 ^{+0.15} / _{+0.10}	58	43	35.5 ^{+0.1} / _{+0.3}	64	30	52

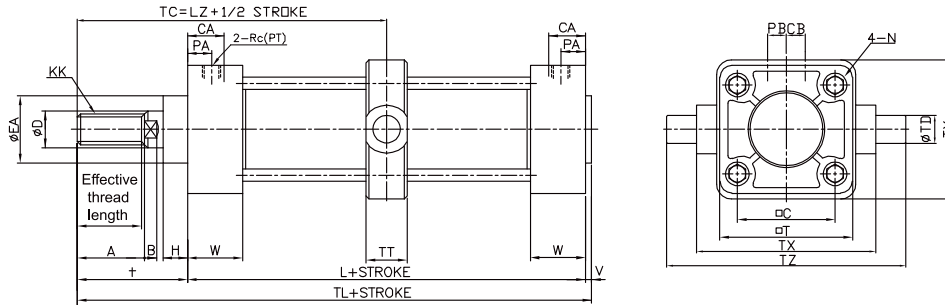
Bore size	H	KK	L	N	PA	PB	R	Rc(PT)	T	□T	TZ	W
Ø40	12	M14xP1.5	84	M8xP1.25	15.4	6.5	(10)	1/4	51	60	165	26
Ø50	12	M18xP1.5	90	M8xP1.25	14	8	(12)	3/8	58	70	183	27.5
Ø63	12	M18xP1.5	98	M8xP1.25	15	8	(16)	3/8	58	83	196	29.5
Ø80	17	M22xP1.5	116	M12xP1.75	17.5	13	(20)	1/2	71	102	235	34
Ø100	17	M26xP1.5	126	M12xP1.75	20	13	(25)	1/2	72	116	256	36.5

中型标准气缸 Medium Cylinder

TCA1, TCDA1 (Ø40~Ø100) Series

Dimensions(mm)(外形尺寸图(毫米))

Center Trunnion Type (中央轴耳型) TCA1T/TCDA1T



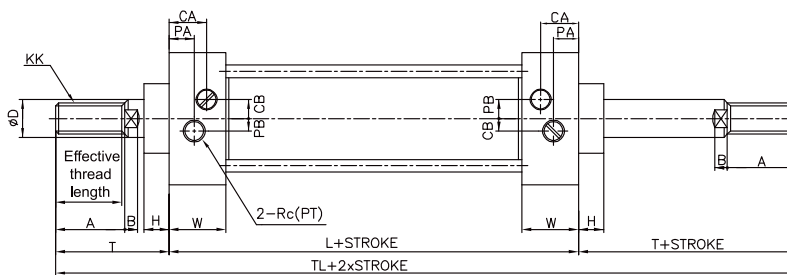
Unit : mm

Bore size	Effective thread length	A	B	□C	CA	CB	ØD	ØEA	H	KK	L	LZ	N
Ø40	27	30	6	44	17.5	8.5	16	32	12	M14xP1.5	84	93	M8xP1.25
Ø50	32	35	7	52	19.5	11	20	40	12	M18xP1.5	90	103	M8xP1.25
Ø63	32	35	7	64	23	11	20	40	12	M18xP1.5	98	107	M8xP1.25
Ø80	37	40	11	78	24	14	25	52	17	M22xP1.5	116	129	M12xP1.75
Ø100	37	40	11	92	26.5	14.5	30	52	17	M26xP1.5	126	135	M12xP1.75

Bore size	PA	PB	Rc(PT)	T	□T	ØTD	TL	TT	TX	TY	TZ	V	W
Ø40	15.4	6.5	1/4	51	60	15 ^{-0.05} _{-0.10}	138	22	85	62	117	3	26
Ø50	14	8	3/8	58	70	15 ^{-0.05} _{-0.10}	151	22	95	74	127	3	27.5
Ø63	15	8	3/8	58	83	18 ^{-0.05} _{-0.10}	158	28	110	90	148	3	29.5
Ø80	17.5	13	1/2	71	102	25 ^{-0.05} _{-0.10}	194	34	140	110	192	7	34
Ø100	20	13	1/2	72	116	25 ^{-0.05} _{-0.10}	205	40	162	130	214	7	36.5

Dimensions(mm)(外形尺寸图(毫米))

Double Rod Cylinder (双活塞杆型) TCA1W/TCDA1W



Unit : mm

Bore size	Effective thread length	A	B	CA	CB	ØD	H	KK	L	PA	PB	Rc(PT)	T	TL	W
Ø40	27	30	6	18	8	16	12	M14xP1.5	84	12.5	6.5	1/4	51	186	26.5
Ø50	32	35	7	19.5	11	20	12	M18xP1.5	90	14	8	3/8	58	206	27.5
Ø63	32	35	7	23	11	20	12	M18xP1.5	98	15	9	3/8	58	214	29.5
Ø80	37	40	11	25	12	25	17	M22xP1.5	116	19	12	1/2	71	258	34
Ø100	37	40	11	27.5	12	30	17	M26xP1.5	126	20	12	1/2	72	270	36.5

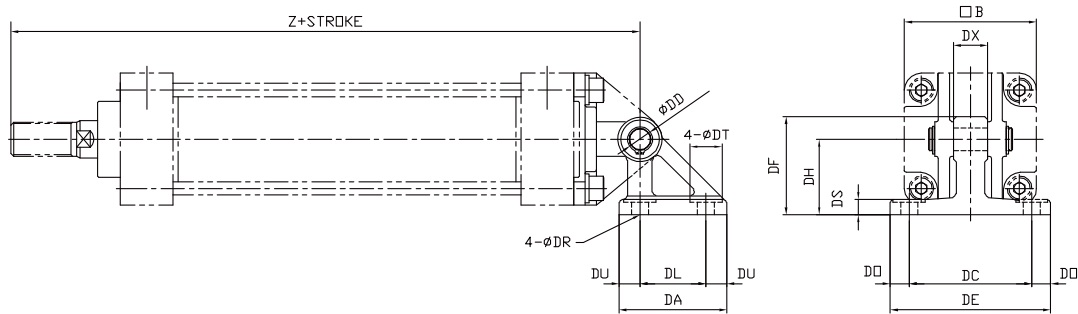
*For dimensions not shown in these figures, refer to the TCA1(Basic) type.(未标注尺寸请参考基本型)

中型标准气缸 Medium Cylinder

TCA1, TCDA1 (Ø40~Ø100) Series

Dimensions(mm)(外形尺寸图(毫米))

Double Clevis Bracket (双U钩接座) TCA1E/TCDA1E

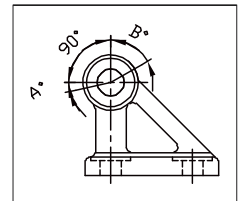


Unit : mm

Bore size	□B	DA	DC	DDH10 (Hole)	DE	DF	DH	DL	DO	DR	DS	DT	DU	DX	Z
Ø40	60	57	65	10 ^{+0.058} ₀	85	52	40	35	10	9	8	17	11	15	165
Ø50	70	57	65	12 ^{+0.070} ₀	85	52	40	35	10	9	8	17	11	18	183
Ø63	85	67	80	16 ^{+0.070} ₀	105	66	50	40	12.5	11	10	22	13.5	25	196
Ø80	102	93	100	20 ^{+0.084} ₀	130	90	65	60	15	13.5	12	24	16.5	31.5	235
Ø100	116	93	100	25 ^{+0.084} ₀	130	90	65	60	15	13.5	12	24	16.5	35.5	256

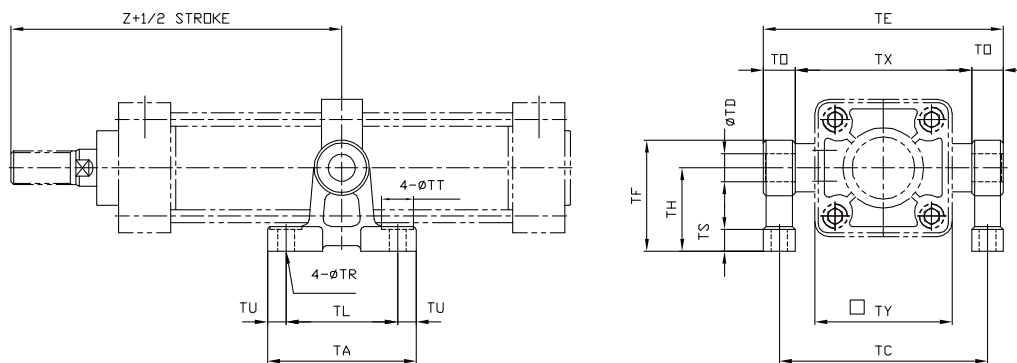
Oscillation angle(摆动角度)

Bore size (mm)	A°	B°	A°+ B°+ 90°
Ø40~Ø100	12°	60°	162°



Dimensions(mm)(外形尺寸图(毫米))

Trunnion Bracket(轴耳接座) TCA1R/TCDA1R



Unit : mm

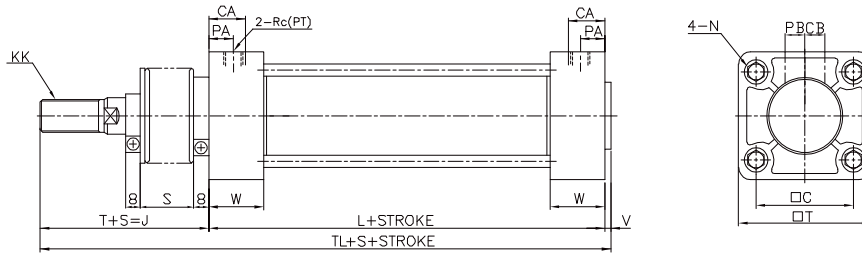
Bore size	TA	TC	TDH10 (Hole)	TE	TF	TH	TL	TO	TR	TS	TT	TU	TX	TY	Z
Ø40	80	102	15 ^{+0.070} ₀	119	60	45	60	17	9	12	17	10	85	62	93
Ø50	80	112	15 ^{+0.070} ₀	129	60	45	60	17	9	12	17	10	95	74	103
Ø63	100	130	18 ^{+0.070} ₀	150	73	55	70	20	11	14	22	15	110	90	107
Ø80	120	166	25 ^{+0.084} ₀	192	100	75	90	26	13.5	17	24	15	140	110	129
Ø100	120	188	25 ^{+0.084} ₀	214	100	75	90	26	13.5	17	24	15	162	130	135

中型标准气缸 Medium Cylinder

TCA1, TCDA1 (Ø40~Ø100) Series

Dimensions(mm)(外形尺寸图(毫米))

With Gaiter Type (带伸缩保护套型) (J/K)



Unit : mm

Bore size	□C	CA	CB	ØEA	ØEB	KK	L	N	PA	PB	c(PT)	S
Ø40	44	17.5	8.5	32	43	M14xP1.5	84	M8xP1.25	15.4	6.5	1/4	1/4 stroke
Ø50	52	19.5	11	40	52	M18xP1.5	90	M8xP1.25	14	8	3/8	1/4 stroke
Ø63	64	23	11	40	52	M18xP1.5	98	M8xP1.25	15	8	3/8	1/4 stroke
Ø80	78	24	14	52	65	M22xP1.5	116	M12xP1.75	17.5	13	1/2	1/4 stroke
Ø100	92	26.5	14.5	52	65	M26xP1.5	126	M12xP1.75	20	13	1/2	1/4 stroke

Bore size	T	□T	TL	V	W
Ø40	59	60	146	3	26
Ø50	66	70	159	3	27.5
Ø63	66	83	166	3	29.5
Ø80	80	102	203	7	34
Ø100	81	116	214	7	36.5

Type	J	K
Material	Nylon Tarpaulin	Neoprene Cloth
Heat resistant	60°	110°

*For dimensions not shown in these figures, refer to the TCA1(Basic) type. (未标注尺寸请参考基本型)

Order Example (订购举例)

Adjustable Stroke Cylinder (可调节行程气缸)

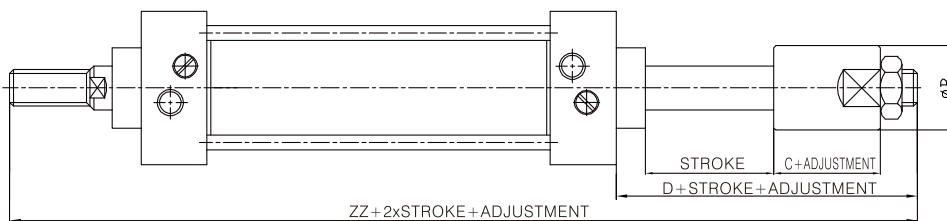
Extension Adjustable Type (伸出调整型)

TCDA1B40-100Y-M9BS-XC8

① ② ③ ④ ⑤ ⑥ ⑦

- ① Magnet 有无磁环
 - ② Mounting 附件安装方式
 - ③ Bore 缸径
 - ④ Stroke 行程
 - ⑤ Accessory 附件
 - ⑥ Auto Switch 磁性开关
 - ⑦ No. of Auto Switch 磁性开关数量
- Stroke Adjust 行程调节
B: Stroke adjusting range 0~50mm
行程可调节范围为0~50mm

Dimensions(mm)(外型尺寸图(毫米))



Unit : mm

Bore size	ØB	C	D	ZZ
Ø40	32	22	46	181
Ø50	42	28	58.5	206.5
Ø63		28	54	210
Ø80	50	35	70	257
Ø100		35	70	268

中型标准气缸/特殊型 Medium Cylinder/Special Order

TCA1, TCDA1(Ø40~Ø100) Series

Order Example (订购举例)

Dual Stroke Cylinder/Double Rod Type (双行程气缸/双活塞杆型)

TCDA1B50-50Y+75Y-M9BS-XC10
① ② ③ ④ ⑤ ⑥ ⑦ ⑧

- ① Magnet 有无磁环
- ② Mounting 附件安装方式
- ③ Bore 缸径
- ④ Stroke A 行程A
- ⑤ Stroke B 行程B
- ⑥ Accessory 附件
- ⑦ Auto Switch 磁性开关
- ⑧ No. of Auto Switch 磁性开关数量

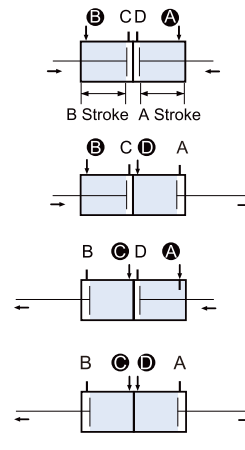
Specification (规格)

Fluid(流体)	Clean Air(洁净空气)
Action(动作形式)	Double Acting(双向)
Proof Press.(保证耐压力)	1.5MPa
Max. Press.(最高使用压力)	1.0MPa
Min. Press.(最低使用压力)	0.05MPa
Piston Speed(活塞速度)	50~500mm/s
Cushion(缓冲)	Air Cushion(气缓冲)
*Lubrication(润滑)	Not Necessary(不需要)
Mounting (安装)	Basic Type(基本型) Foot Type(脚座型) Front Flange(杆侧法兰)
Applicable Bore Size(mm)(适用缸径)	Ø40, Ø50, Ø63, Ø80, Ø100

Symbol (符号)

Two cylinders are constructed as one cylinder in a back-to-back configuration allowing the cylinder stroke to be controlled in three steps.

两个气缸以背靠背形式组成一个气缸，使气缸行程分三步控制。



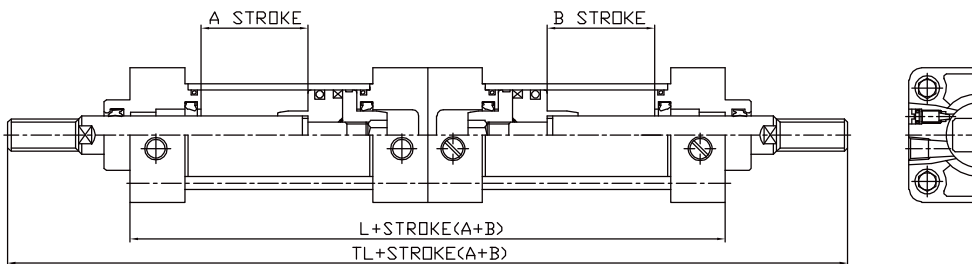
When air pressure is supplied to ports A and B, both A and B strokes retract.
当A、B两口同时进气时，A、B行程同时缩回。

When air pressure is supplied to ports B and D, A stroke extends.
当B、D两口同时进气时，伸出A行程。

When air pressure is supplied to ports A and C, B stroke extends.
当A、C两口同时进气时，伸出B行程。

When air pressure is supplied to ports C and D, both stroke A and B out stroke.
当C、D两口同时进气时，同时伸出A、B行程。

Dimensions(mm)(外形尺寸图(毫米))



Unit : mm

Bore size	L	TL
Ø40	168	270
Ø50	180	296
Ø63	196	312
Ø80	232	374
Ø100	252	396

*For dimensions not shown in these figures, refer to the TCA1(Basic) type.(未标注尺寸请参考基本型)

中型标准气缸/特殊型 Medium Cylinder/Special Order

TCA1, TCDA1 (Ø40~Ø100) Series

Order Example (订购举例)

Dual Stroke Cylinder/Single Rod Type (双行程气缸/单活塞杆型)

TCDA1B50-50+(75-50)Y-M9BS-XC11

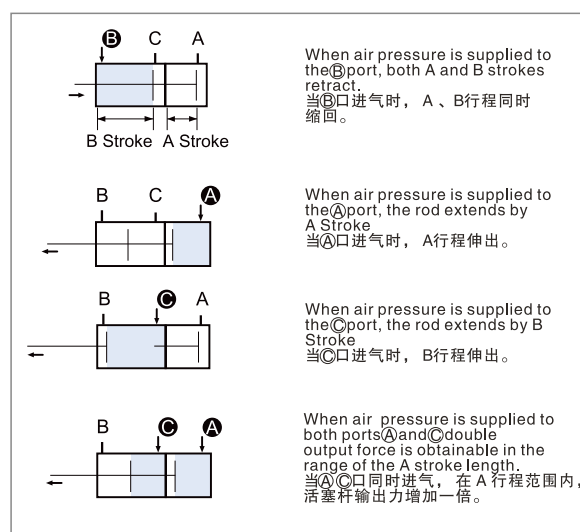
① ② ③ ④ ⑤ ⑥ ⑦ ⑧

- | | |
|---------------------------------|-----------------------------|
| ① Magnet 有无磁环 | ⑥ Accessory 附件 |
| ② Mounting 附件安装方式 | ⑦ Auto Switch 磁性开关 |
| ③ Bore 缸径 | ⑧ No. of Auto Switch 磁性开关数量 |
| ④ Stroke A 行程A | |
| ⑤ Stroke B- stroke A
行程B-行程A | |

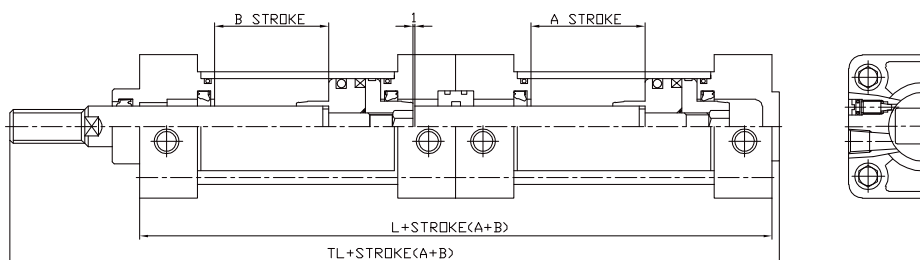
Specification (规格)

Fluid(流体)	Clean Air(洁净空气)
Proof Press.(保证耐压力)	1.5MPa
Max. Press.(最高使用压力)	1.0MPa
Min. Press.(最低使用压力)	0.05MPa
Piston Speed(活塞速度)	50~500mm/s
Cushion(缓冲)	Air Cushion(气缓冲)
Mounting (安装)	Basic Type(基本型) Foot Type(脚座型) Front Flange(杆侧法兰) Rear Flange(后法兰) Single Clevis(单U钩型) Double Clevis(双U钩型) Center Trunnion(中央轴耳)
Applicable Bore Size(mm)(适用缸径)	Ø40, Ø50, Ø63, Ø80, Ø100

Symbol (符号)



Dimensions(mm)(外形尺寸图(毫米))



Unit : mm

Bore size	L	TL
Ø40	168	222
Ø50	180	241
Ø63	196	257
Ø80	232	310
Ø100	252	330

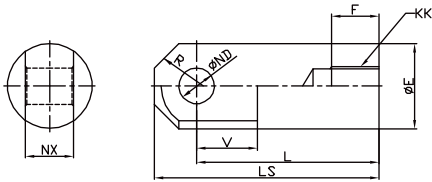
*For dimensions not shown in these figures, refer to the TCA1(Basic) type.(未标注尺寸请参考基本型)

中型标准气缸/特殊型 Medium Cylinder/Special Order

TCA1, TCDA1(Ø40~Ø100) Series

Dimensions(mm)(外型尺寸图(毫米))

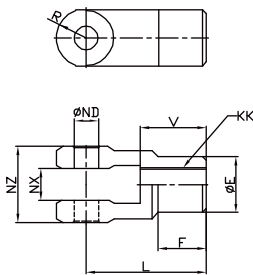
Single Knuckle Joint (I型单肘接头)



Unit : mm

Bore size	ØE	F	KK	L	LS	ØND	NX	R	V
Ø40	24	22	M14x1.5	55	69	12 ^{+0.07} ₀	16 ^{-0.1} _{-0.3}	15.5	20
Ø50,63	28	27	M18x1.5	60	74	12 ^{+0.07} ₀	16 ^{-0.1} _{-0.3}	15.5	20
Ø80	36	37	M22x1.5	71	91	18 ^{+0.07} ₀	28 ^{-0.1} _{-0.3}	22.5	26
Ø100	40	37	M26x1.5	83	105	20 ^{+0.08} ₀	30 ^{-0.1} _{-0.3}	24.5	28

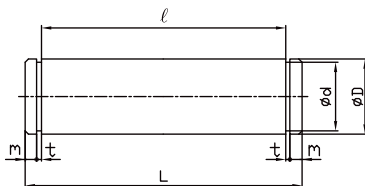
Double Knuckle Joint (Y型双肘接头)



Unit : mm

Bore size	ØE	F	KK	L	ØND	NX	NZ	R	V
Ø40	24	22	M14x1.5	55	12 ^{+0.1} ₀	16 ^{+0.3} _{+0.1}	38	15.5	30
Ø50,63	28	4	M18x1.5	60	12 ^{+0.1} ₀	16 ^{+0.3} _{+0.1}	38	15.5	30
Ø80	36	33	M22x1.5	71	18 ^{+0.1} ₀	28 ^{+0.3} _{+0.1}	55	22.5	43
Ø100	40	4	M26x1.5	83	20 ^{+0.1} ₀	30 ^{+0.3} _{+0.1}	61	24.5	45

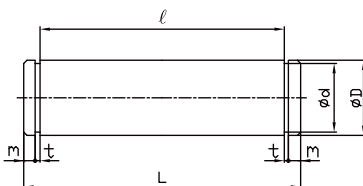
Clevis Pin(U型钩用销子)



Unit : mm

Bore size	ØDd9	Ød	L	l	m	t
Ø40	10 ^{-0.04} _{-0.09}	Ø9	35.8	29.8	1.85	1.15
Ø50	12 ^{-0.04} _{-0.09}	Ø11	44.5	38.2	1.9	1.15
Ø63	16 ^{-0.05} _{-0.09}	Ø14.5	55.3	49.2	1.9	1.15
Ø80	20 ^{-0.06} _{-0.11}	Ø18.5	68.2	61.2	2.15	1.35
Ø100	25 ^{-0.06} _{-0.11}	Ø23	71.2	64.2	2.15	1.35

Knuckle Joint Pin(肘接头用销子)



Unit : mm

Bore size	ØDd9	Ød	L	l	m	t
Ø40, 50, 63	12 ^{-0.05} _{-0.09}	Ø11	44.5	38.2	1.85	1.13
Ø80	18 ^{-0.05} _{-0.09}	Ø16.5	62.5	55.2	2.15	1.35
Ø100	20 ^{-0.06} _{-0.12}	Ø18.5	68.2	61.2	2.15	1.35

中型标准气缸/低摩擦型

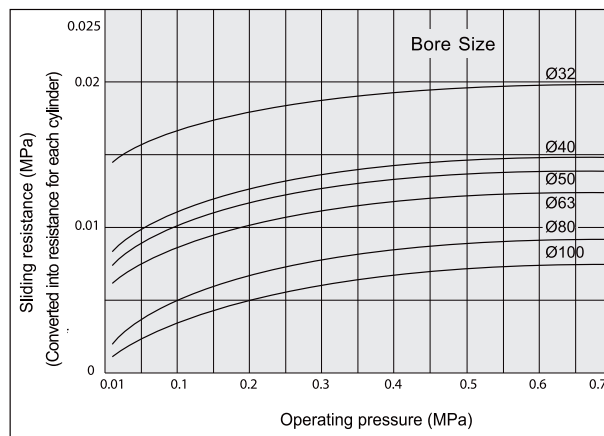
Medium Cylinder/ Low Friction

TCA1BQ, TCDA1BQ(Ø40~Ø100) Series

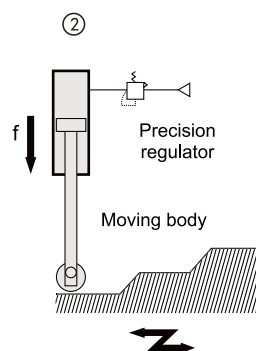
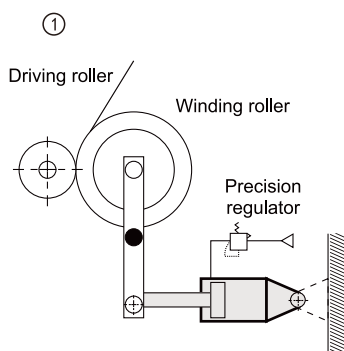
Specification (规格)

Fluid(流体)	Clean Air(洁净空气)
Proof Press.(保证耐压力)	1.05MPa
Max. Press.(最高使用压力)	0.99MPa
Min. Press.(最低使用压力)	0.002MPa
Piston Speed(活塞速度)	50~500mm/s
Cushion(缓冲)	None(无)
*Lubrication(润滑)	Not Necessary(不需要)
Inner leakage(内部泄漏量)	Below 0.5 l/min (ANR)
Ambient temperature(环境温度)	-10~60°C

Resistance of Low Friction Sliding Side



Applications(应用)



1. When used as a balancer etc., follow the example of the application mentioned earlier applying pressure at one port while leaving the other port open to atmosphere.

With pressure at rod cover port

..... Low friction side B (Example of application ①)

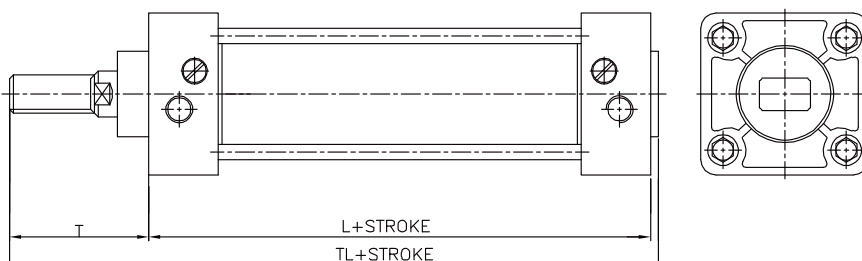
With pressure at head cover port

..... Low friction side F (Example of application ②)

2. In both cases, as long as the outside pressure moves the piston rod, low friction can result in the direction of extension and retraction.

Dimensions(mm)(外形尺寸图(毫米))

Low Friction(低摩擦型) TCA1BQ/TCDA1BQ



Unit : mm

Bore size	L	T	TL
Ø40	94	51	148
Ø50	100	58	161
Ø63	108	58	169
Ø80	126	71	204
Ø100	136	72	215

*For dimensions not shown in these figures, refer to the TCA1(Basic) type.(未标注尺寸请参考基本型)