

标准薄型气缸

Compact Standard Cylinder

TAQ2, TADQ2 (Ø12~Ø100) Series

1



Common Specification (共同规格)

Bore(缸径)	12	16	20	25	32	40	50	63	80	100
Fluid(流体)	Clean Air(洁净空气)									
Action(动作形式)	Double Acting(双动) Single Acting(单动): 弹簧压回/弹簧压出									
Proof Press.(保证耐压力)	1.5Mpa									
Max. Press.(最高使用压力)	0.99Mpa									
Amb.Temp(环境及流体温度)	-5~+60°C (未冻结)									
Rod End Thread(杆端螺纹)	Female(STD)(内螺纹(标准)), Male(外螺纹(任选))									
Cushion(缓冲)	None(无)									
Stroke Tolerance(行程调整范围)	+0.1 0									
*Lubrication(润滑)	Non-Lube(不需要)									
Mounting(安装)	Through Hole(STD)(通孔标准), Both End Tapped(两端内螺纹)									
Pipe Size(接管口径)Rc(PT)	M5x0.8			1/8"		1/4"		3/8"		

* Use Tubine Oil 1st-Grade ISOVG32, If Necessary(如需要润滑请用透平1号油ISOVG32)

How To Order (型号表示方法)

*Cushion for Single Acting Type:
Not Available.
(单动气缸无橡胶缓冲)

Nil(空)	Single Rod(单活塞杆型)
W	Double Rod End(双活塞杆型)

Please refer to the table.
请参考行程表

Nil(空)	Rod End Female Thread(杆端内螺纹)
C	Rubber Cushion(橡胶缓冲)
M	Rod End Male Thread(杆端外螺纹)

Nil(空)	None(无磁性开关)
M9B	Reed Switch(带有接点磁性开关)
M9NP	Contactless Switch(无接点磁性开关)
A72K	Reed Switch(带有接点磁性开关)

Type 缸身

Bore 缸径

Stroke 行程

Option 缸身

*Auto Switch 磁性开关

TA D Q2 W A 32 - 30 D C - M9B S

Magnet 有无磁环	Type 类型	Action 缸身(任选)	No. of Auto Switch 磁性开关数量
Nil(空) None(无磁环)	B Through Hole(通孔)	D Double Acting(双动)	Nil(空) 2(个)
D Built-in Magnet(有磁环)	A Both End Tapped(两端螺纹)	S Single Acting(Spring Return)(单动(弹簧压回))(Ø12-32)	S 1(个)
		T Single Acting(Spring Extended)(单动(弹簧压出))	3 3(个)

*Magnet switch: applicable double acting type only.
(内置磁环型只适合双动气缸。)

*Auto Switch (磁性开关)引线长度表示记号:
无记号-1m(标准)
L -3m
Z-5m

Stroke (行程)

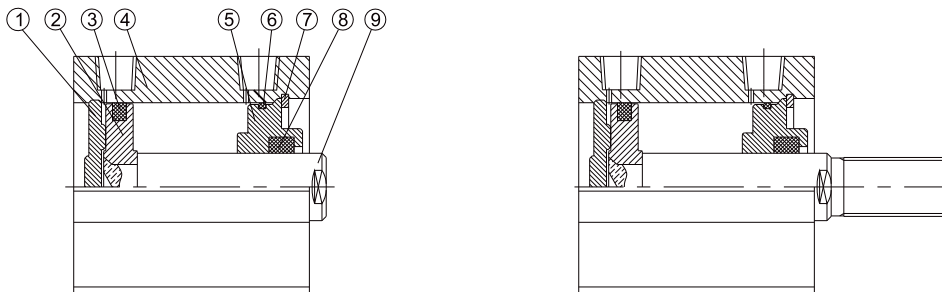
Bore (缸径) (mm)	Stroke(标准行程)	
	Double(双动)	Single(单动)
Ø12	5, 10, 15	5, 10
Ø16	20, 25, 30	
Ø20	5, 10, 15, 20, 25, 30, 35, 40, 45, 50	5, 10
Ø25		
Ø32	5, 10, 15, 20, 25, 30, 35, 40, 45, 50, 75, 100	5, 10
Ø40		
Ø50	5, 10, 15, 20, 25, 30, 35, 40, 45, 50, 75, 100	Not Available (不适用)
Ø63		
Ø80		
Ø100		

Symbol (图形符号)

<p>Double Acting / Single Rod 双动/单活塞杆</p>	<p>Single Acting / Spring Return 单动/弹簧压回</p>
<p>Double Acting / Double Rod 双动/双活塞杆</p>	<p>Single Acting / Spring Extend 单动/弹簧压出</p>

标准薄型气缸 Compact Standard Cylinder TAQ2, TADQ2(Ø12~Ø16) Series

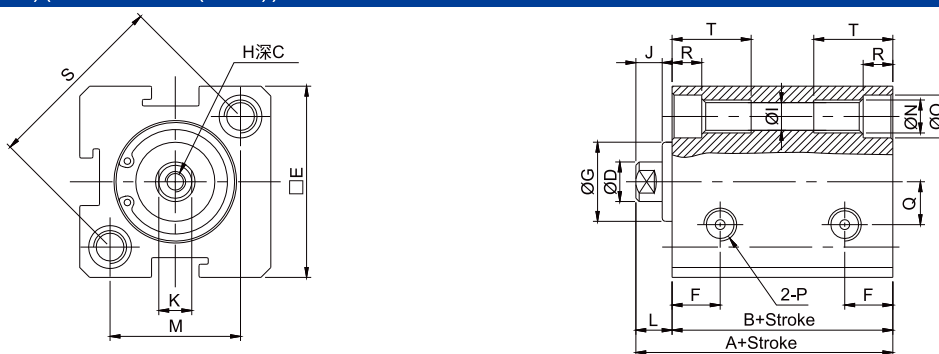
Construction(内部结构)



序号	名称	序号	名称
1	后端盖	6	端盖密封
2	活塞	7	卡环
3	活塞密封圈	8	活塞杆密封圈
4	缸筒	9	活塞杆
5	前端盖	10	

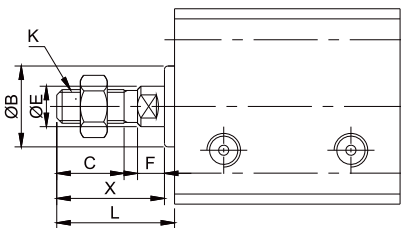
Dimensions(mm)(外形尺寸图(毫米))

Ø12, Ø16



Bore(缸径) (mm)	Standard Type (标准型)		Attach magnet (带磁环型)		C	ØD	E	F	ØG	H	ØI	K	L	M	N(两边螺纹)	ØO	2-P
	A	B	A	B													
Ø12	22	17	32	27	6	6	25	7.5	10.2	M3x0.5	4.2	5	5	16.2	M5x0.8	6.5	M5x0.8
Ø16	24	18.5	34	28.5	6	6	29	7.5	11	M3x0.5	4.2	5	5.5	19.8	M5x0.8	6.5	M5x0.8
Bore(缸径) (mm)	Q	R	S	T	J												
Ø12	6	4.5	23	12	4												
Ø16	6.5	4.5	28	12	4												

Rod End Male Screw(杆端外螺纹)(W)



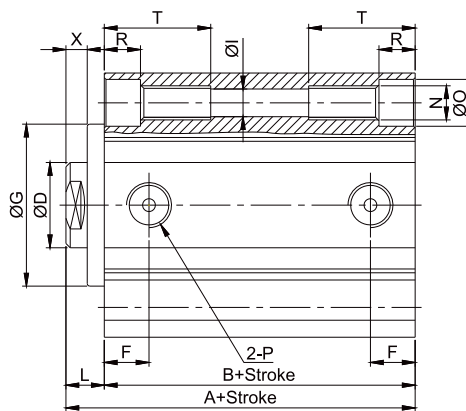
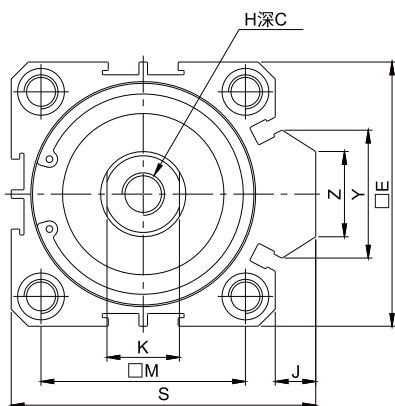
Bore(缸径) (mm)	ØB	C	ØE	F	K	L	X
Ø12	10.2	10	6	4	M5x0.8	17	16
Ø16	11	10	6	4	M5x0.8	17.5	16

标准薄型气缸 Compact Standard Cylinder

TAQ2, TADQ2(Ø20~Ø100) Series

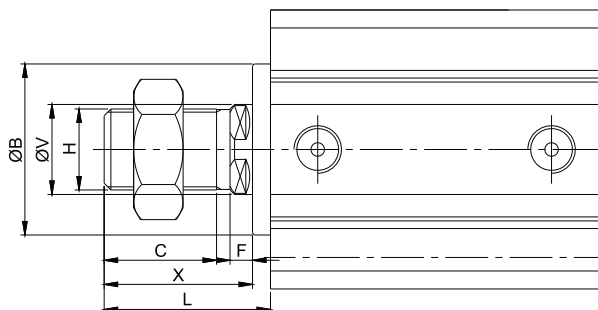
Dimensions(mm)(外形尺寸图(毫米))

Ø20~Ø100



Bore(缸径) (mm)	Standard Type (标准型)		Attach magnet (带磁环型)		C	ØD	E	F	ØG	H	I	J	K	L	M	N(两边螺纹)	ØO
	A	B	A	B													
Ø20	25	19.5	35	29.5	8	8	34	7	13	M4x0.7	4.2	2	6	5.5	24	M5x0.8	6.5
Ø25	27	21	37	31	10	10	40	7	17	M5x0.8	4.6	2	8	6	28	M6x1.0	8.2
Ø32	31.5	24.5	41.5	34.5	12	12	44	9	22	M6x1.0	4.6	6	10	7	34	M6x1.0	8.2
Ø40	33	26	43	36	12	16	52	9.5	28	M8x1.25	6.5	6.5	14	7	40	M8x1.25	10
Ø50	37	28	47	38	15	20	62	10	38	M10x1.5	6.5	9.5	17	9	48	M8x1.25	11
Ø63	41	32	51	42	15	20	75	11.5	40	M10x1.5	6.5	9.5	17	9	60	M8x1.25	11
Ø80	52	41	62	51	20	25	94	14	45	M14x1.5	9.2	10	22	11	74	M12x1.75	14
Ø100	63	51	73	61	20	32	114	20.5	55	M18x1.5	11.3	10	27	12	90	M14x2.0	17.5
Bore(缸径) (mm)	2-P		R	S	T	X	Y	Z									
	A	B															
Ø20	M5x0.8	4.5	36	14	4	11.3	10										
Ø25	M5x0.8	5.5	42	15	4	12	10										
Ø32	PT1/8"	5.5	50	16	4	18.3	15										
Ø40	PT1/8"	7.5	58.5	20	4	21.3	16										
Ø50	PT1/4"	8.5	71.5	25	5	30	20										
Ø63	PT1/4"	8.5	84.5	25	5	28.7	20										
Ø80	PT3/8"	10.5	104	25	6	36	26										
Ø100	PT3/8"	13	124	30	7	35	26										

Rod End Male Screw(杆端外螺纹)(W)



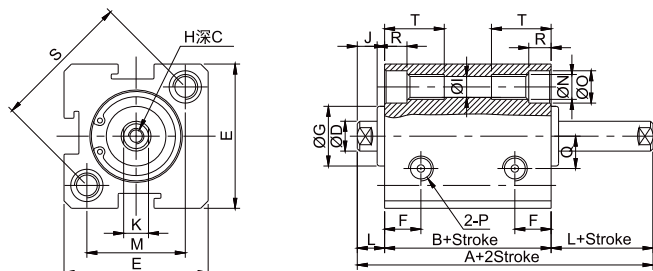
Bore(缸径) (mm)	B	C	F	H	L	V	X
Ø20	16	13	4	M6x1.0	20.5	8	19
Ø25	17	15	4	M8x1.25	23	10	21
Ø32	22	15	4	M10x1.25	25	12	22
Ø40	28	25	4	M14x1.5	35	16	32
Ø50	38	25	5	M18x1.5	37	20	33
Ø63	40	25	5	M18x1.5	37	20	33
Ø80	45	30	6	M22x1.5	44	25	39
Ø100	55	35	7	M26x1.5	50	32	45

标准薄型气缸 Compact Standard Cylinder

TAQ2, TADQ2(Ø12~Ø100) Series

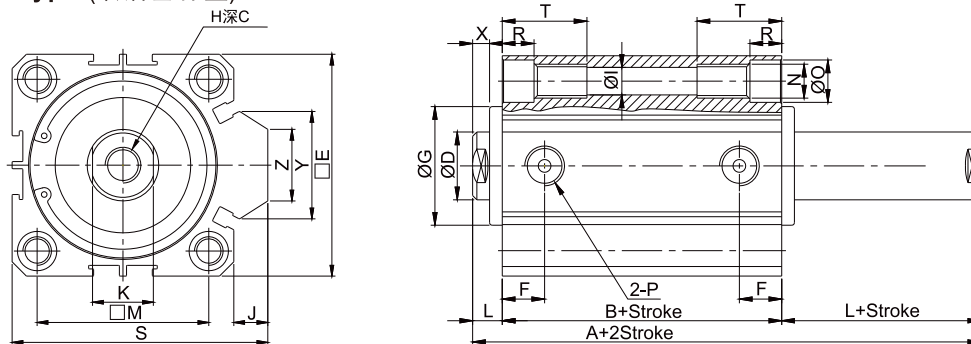
Dimensions(mm)(外形尺寸图(毫米))

Double Rod Type (双活塞杆型) TAQ2W Ø12, Ø16



Bore(缸径) (mm)	Standard Type (标准型)		Attach magnet (带磁环型)		C	ØD	E	F	ØG	H	ØI	K	L	M	N(两边螺纹)	ØO	2-P	Q
	A	B	A	B														
Ø12	27	17	37	27	6	6	25	7.5	10.2	M3×0.5	4.2	5	5	16.2	M5×0.8	6.5	M5×0.8	6
Ø16	29.5	18.5	39.5	28.5	6	6	29	7.5	11	M3×0.5	4.2	5	5.5	19.8	M5×0.8	6.5	M5×0.8	6.5
Bore(缸径) (mm)	R	S	T															
Ø12	4.5	23	12															
Ø16	4.5	28	12															

Double Rod Type (双活塞杆型) TAQ2W Ø20~Ø100



Bore(缸径) (mm)	Standard Type (标准型)		Attach magnet (带磁环型)		C	ØD	E	F	G	H	I	J	K	L	M	N(两边螺纹)	ØO	2-P
	A	B	A	B														
Ø20	30.5	19.5	40.5	29.5	8	8	34	7	15	M4x0.7	4.2	2	6	5.5	24	M5x0.8	6.5	M5x0.8
Ø25	33	21	43	31	10	10	40	7	17	M5x0.8	4.6	2	8	6	28	M6x1.0	8.2	M5x0.8
Ø32	38.5	24.5	48.5	34.5	12	12	44	9	22	M6x1.0	4.6	6	10	7	34	M6x1.0	8.2	PT1/8"
Ø40	40	26	50	36	12	16	52	9.5	28	M8x1.25	6.5	6.5	14	7	40	M8x1.25	10	PT1/8"
Ø50	46	28	56	38	15	20	62	10	38	M10x1.5	6.5	9.5	17	9	48	M8x1.25	11	PT1/4"
Ø63	50	32	60	42	15	20	75	11.5	40	M10x1.5	6.5	9.5	17	9	60	M8x1.25	11	PT1/4"
Ø80	63	41	73	51	20	25	94	14	45	M14x1.5	9.2	10	22	11	74	M12x1.75	14	PT3/8"
Ø100	75	51	85	61	20	32	114	20.5	55	M18x1.5	11.3	10	27	12	90	M14x2.0	17.5	PT3/8"
Bore(缸径) (mm)	R	S	T	X	Y	Z												
Ø20	4.5	36	14	4	11.3	10												
Ø25	5.5	42	15	4	12	10												
Ø32	5.5	50	16	4	18.3	15												
Ø40	7.5	58.5	20	4	21.3	16												
Ø50	8.5	71.5	25	5	30	20												
Ø63	8.5	84.5	25	5	28.7	20												
Ø80	10.5	104	25	6	36	26												
Ø100	13	124	30	7	35	26												

注：外螺纹尺寸请参考前页单活塞杆型

标准薄型气缸

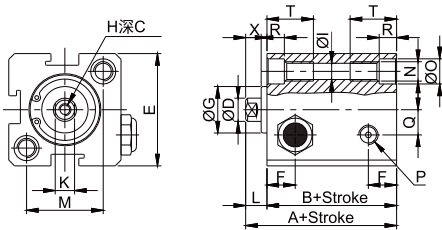
Compact Standard Cylinder

TAQ2, TADQ2(Ø12~Ø100) Series

Dimensions(mm)(外形尺寸图(毫米))

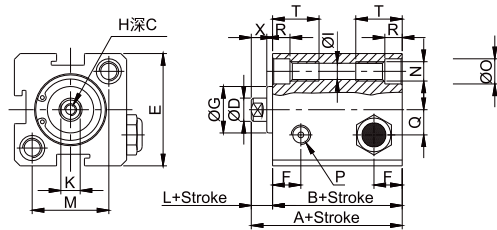
Single Acting(Spring Return)(单动(弹簧压回))(Ø12~32)

TAQ12~16 - S

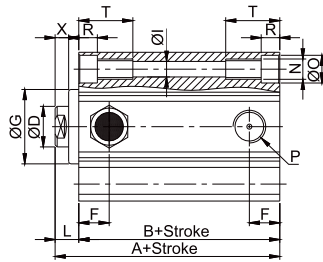
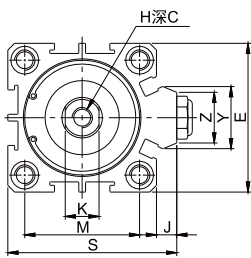


Single Acting(Spring Extended)(单动(弹簧压出))

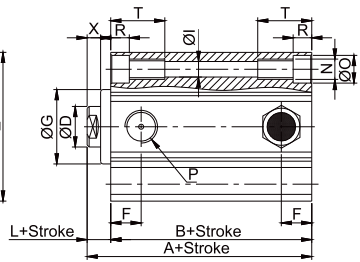
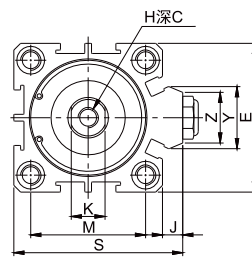
TAQ12~16 - T



TAQ20~40 - S



TAQ20~40 - T



Bore(缸径) (mm)	Standard Type (标准型)				Attach magnet(带磁环型)				C	ØD	E	F	G	H	ØI	J	K	L	M
	A		B		A		B												
	≤10	>10	≤10	>10	≤10	>10	≤10	>10											
Ø12	32	42	27	37	42	52	37	47	6	6	25	6.3	10.2	M3×0.5	4.2	-	5	5	16.2
Ø16	34	44	28.5	38.5	44	54	38.5	48.5	6	6	29	7.3	11	M3×0.5	4.2	-	5	5.5	19.8
Ø20	35	45	29.5	39.5	45	55	39.5	49.5	8	8	34	7.5	15	M4×0.7	4.2	2	6	5.5	24
Ø25	37	47	31	41	47	57	41	51	10	10	40	8	17	M5×0.8	4.6	2	8	6	28
Ø32	41.5	51.5	34.5	44.5	51.5	61.5	44.5	54.5	12	12	44	9	22	M6×1.0	4.6	6	10	7	34
Ø40	43	53	36	46	53	63	46	56	12	16	52	10	28	M8×1.25	6.5	6.5	14	7	40
Bore(缸径) (mm)	N(两边螺纹)		ØO	2-P	Q	R	S	T	X	Y	Z								
Ø12	M5×0.8		6.5	M5×0.8	6	4.5	-	12	4	-	-								
Ø16	M5×0.8		6.5	M5×0.8	6.5	4.5	-	12	4	-	-								
Ø20	M5×0.8		6.5	M5×0.8	-	4.5	36	14	4	11.3	10								
Ø25	M6×1.0		8.2	M5×0.8	-	5.5	42	15	4	12	10								
Ø32	M6×1.0		8.2	PT1/8"	-	5.5	50	16	4	18.3	15								
Ø40	M8×1.25		10	PT1/8"	-	7.5	58.5	20	4	21.3	16								

标准薄型气缸 Compact Standard Cylinder

TAQ2, TADQ2(Ø12~Ø100) Series

Order Example (订购举例)

Dual Stroke Cylinder/Double Rod Type (双行程气缸/双活塞杆型)

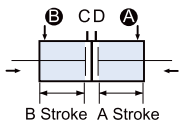
TADQ2B32-50+75DC-M9BS-XC10

① ② ③ ④ ⑤ ⑥ ⑦ ⑧ ⑨

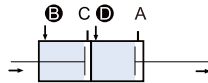
- ① Magnet 有无磁环
- ② Mounting 附件安装方式
- ③ Bore 缸径
- ④ Stroke A 行程A
- ⑤ Stroke B 行程B
- ⑥ Double(Single) Acting 双(单)动
- ⑦ Option 缸身选项
- ⑧ Auto Switch 磁性开关
- ⑨ No.of Auto Switch 磁性开关数量

Symbol (符号)

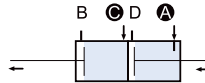
Two cylinders are constructed as one cylinder in a back-to-back configuration allowing the cylinder stroke to be controlled in three steps.
两个气缸以背靠背形式组成一个气缸，使气缸行程分三步控制。



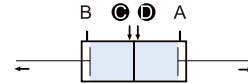
B Stroke A Stroke
When air pressure is supplied to ports A and B, both A and B strokes retract.
当A、B两口同时进气时，A、B行程同时缩回。



When air pressure is supplied to ports B and D, A stroke extends.
当B、D两口同时进气时，伸出A行程。

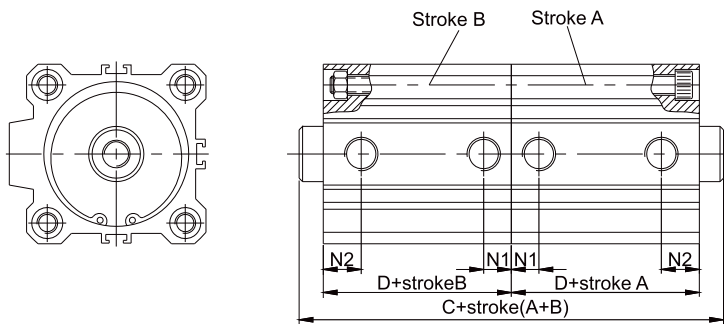


When air pressure is supplied to ports A and C, B stroke extends.
当A、C两口同时进气时，伸出B行程。



When air pressure is supplied to ports C and D, both stroke A and B out stroke.
当C、D两口同时进气时，同时伸出A、B行程。

Dimensions(mm)(外形尺寸图(毫米))



Bore(mm)	C	D	N ₁	N ₂
ø12	44(64)	17(27)	6.3	6.3
ø16	48(68)	18.5(28.5)	7.3	7.3
ø20	50(70)	19.5(29.5)	7.5	7.5
ø25	54(74)	21(31)	8	8
ø32	63(83)	24.5(34.5)	9	9
ø40	66(86)	26(36)	10	10
ø50	74(94)	28(38)	10.5	10.5
ø63	82(102)	32(42)	11.8	11.8
ø80	104(124)	41(51)	14.5	14.5
ø100	126(146)	51(61)	20.5	20.5

※ () With auto switch带磁性开关

标准型薄型气缸/特殊型 Compact Cylinder/Special Order

TAQ2, TADQ2(Ø12~Ø100) Series

Order Example (订购举例)

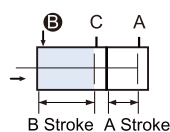
Dual Stroke Cylinder/Single Rod Type (双行程气缸/单活塞杆型)

TADQ2B32-50+(75-50)DC-M9BS-XC11

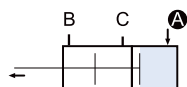
① ② ③ ④ ⑤ ⑥ ⑦ ⑧

- ① Magnet 有无磁环
- ② Mounting 附件安装方式
- ③ Bore 缸径
- ④ Stroke A 行程A
- ⑤ Stroke B- stroke A 行程B-行程A
- ⑥ Option 缸身选项
- ⑦ Auto Switch 磁性开关
- ⑧ No.of Auto Switch 磁性开关数量

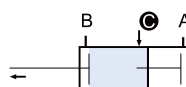
Symbol (符号)



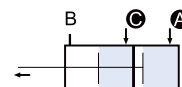
When air pressure is supplied to the B port, both A and B strokes retract.
当B口进气时, A、B行程同时缩回。



When air pressure is supplied to the A port, the rod extends by A Stroke.
当A口进气时, A行程伸出。



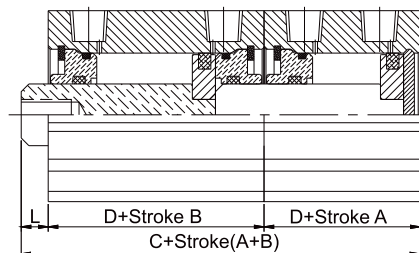
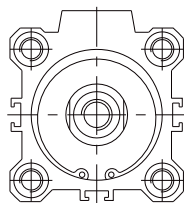
When air pressure is supplied to the C port, the rod extends by B Stroke.
当C口进气时, B行程伸出。



When air pressure is supplied to both ports A and C, double output force is obtainable in the range of the A stroke length.
当A、C口同时进气, 在A行程范围内, 活塞杆输出力增加一倍。

Dimensions(mm)(外形尺寸图(毫米))

Dual Stroke Cylinder/Single Rod Type (双行程气缸/单活塞杆型)



Bore(mm)	C	D	L
Ø12	39(59)	17(27)	5
Ø16	42.5(62.5)	18.5(28.5)	5.5
Ø20	44.5(64.5)	19.5(29.5)	5.5
Ø25	48(68)	21(31)	6
Ø32	56(76)	24.5(34.5)	7
Ø40	59(79)	26(36)	7
Ø50	65(85)	28(38)	9
Ø63	73(93)	32(42)	9
Ø80	93(113)	41(51)	11
Ø100	114(134)	51(61)	12

※ () With auto switch带磁性开关

标准型薄型气缸/特殊型 Compact Cylinder/Special Order

TAQ2, TADQ2(Ø12~Ø100) Series

Order Example (订购举例)

Adjustable Stroke Cylinder (可调节行程气缸)

Extension Adjustable Type (伸出调整型)

TADQ2B40-100DC-M9BS-XC8

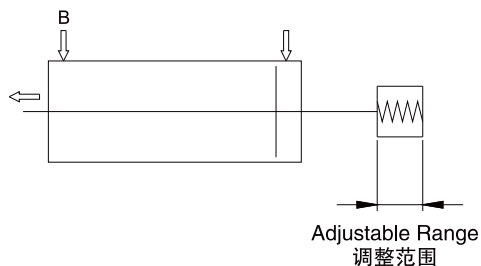
① ② ③ ④ ⑤ ⑥ ⑦ ⑧

- ① Magnet 有无磁环
- ② Mounting 附件安装方式
- ③ Bore 缸径
- ④ Stroke 行程
- ⑤ Double(Single) Acting 双(单)动
- ⑥ Option 缸身选项
- ⑦ Auto Switch 磁性开关
- ⑧ No. of Auto Switch 磁性开关数量
Stroke adjusting range 0~10mm
行程可调节范围为0~10mm

Symbol (符号)

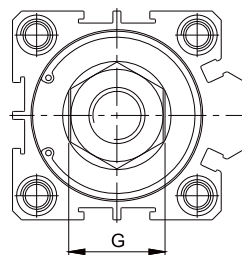
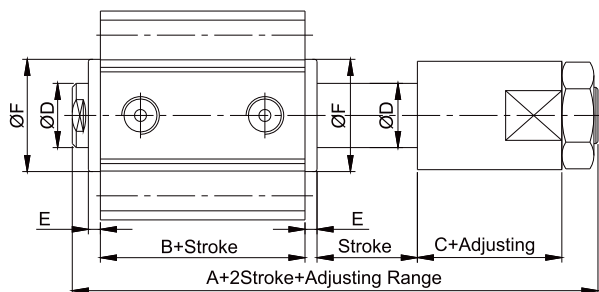
Two stroke at extension of the cylinder can be adjusted by stopper in head side from full stroke 0~10mm (0.39inch)

气缸伸出行程可通过调节头端挡块实现调节范围0~10mm,(0.39inch).



Dimensions(mm)(外形尺寸图(毫米))

Adjustable Stroke Cylinder (可调节行程气缸) Extension Adjustable Type (伸出调整型)



(mm)

Bore (缸径)	A		B		C	D	E	F	G
	无磁环	带磁环	无磁环	带磁环					
Ø12	40	50	17	27	13	6	1	10.2	11
Ø16	42.5	52.5	18.5	28.5	13	6	1.5	11	11
Ø20	47.5	57.5	19.5	29.5	16	8	1.5	16	17
Ø25	55	65	21	31	19	10	2	17	17
Ø32	61.5	71.5	24.5	34.5	21	12	3	22	24
Ø40	65	75	26	36	21	16	3	28	24
Ø50	73	83	28	38	21	20	4	38	30
Ø63	77	87	32	42	21	20	4	40	30
Ø80	94	104	41	51	24	25	5	45	41
Ø100	105	105	51	61	24	32	5	55	41

※Other dimensions are the same as for standard type.
其他尺寸与标准型相同