

# 中型平行开闭气动手指 General Hand

## TMHK Series

### Feature (特征)

- Heavy hand of parallel open & close motion type crank lever
- Accurate open & close motion by cross roller bearing guide on sliding part of jaw
- Durability due to high accuracy & high strength structure
- Variety of attachment method
- Possible to mount auto switches
- Possible to mount safety cover for protecting from dusts & arsenic acid of chips
- 平行开闭型中型气爪
- 采用滚珠轴承导向, 开闭动作精确
- 具高精度, 高强度, 稳定性, 耐久性
- 安装方式多样, 可配磁性开关
- 可配防尘, 异物的保护罩



### How To Order (型号表示方法)

TMHK 20 - RS2 - C

Bore 缸径	Auto Switch 磁性开关	Protection Cover 防护罩
20,30,40,50,63,80,100	Nil(空) None (无磁性开关)	Nil(空) None (无)(标准型)
	RS1 Switch 1EA(磁性开关1只)	C Cover(有防护罩)
	RS2 Switch 2EA(磁性开关2只)	

Size (缸径)	Stroke (开闭范围)	Size (缸径)	Stroke (开闭范围)
20	12	63	40
30	24	80	50
40	30	100	60
50	36	-	-

### Specification (规格)

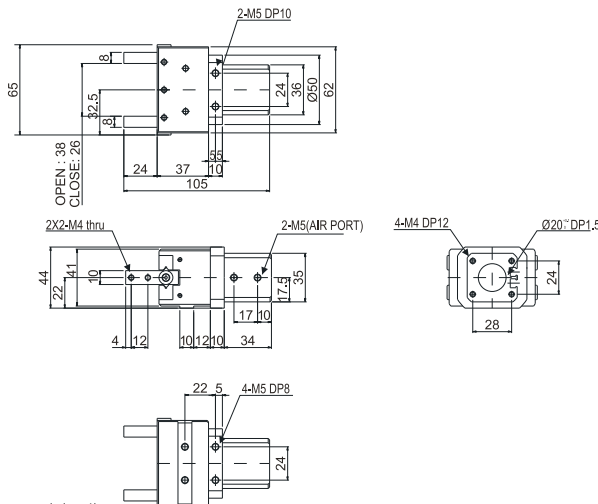
Type(型号)	TMHK20	TMHK30	TMHK40	TMHK50	TMHK63	TMHK80	TMHK100
Cylinder Bore Size(缸径)(mm)	20	30	40	50	63	80	100
Stroke(开闭行程)(mm)	12	24	30	36	40	50	60
Gripping Force(理论把持力)(kgf)	关	12.12	30.6	48.1	84.7	133	250
Air pressure(使用压力)(5kgf/cm <sup>2</sup> )	开	14.23	36.5	57.3	100	159	277
Air Port Size(接管口径)	M5	M5	PT1/8	PT1/8	PT1/8	PT1/4	PT1/4
Weight(本体重量)(kgf)	0.52	1.8	2.2	3.1	4.5	8.2	12.1
Allowable Length of Soft Jaw L(允许距离)(mm)	60	80	100	120	140	170	200
Displacement of Soft Jaw L(变变量M)(mm)	45	50	60	70	80	90	100
Working Fluid(使用流体)	Clean Air(洁净空气)(*注1)						
Operating Pressure(使用压力)(kgf/cm <sup>2</sup> )	(1.5~7) General resistance pressure:10.5 (1.5~7(普通耐压:10.5))						
Lubrication(润滑)	Not Required(不需要)(*注2)						
Temperature(使用温度)(°C)	5~60						
Accuracy(反复开闭位置精度)(mm)	±0.01		±0.03			±0.05	
Max.Cycle per Minute(最高使用回数)(C.P.M)	120		90			60	
Motion Type(工作方式)	Double-acting type (双动)(Structure:Parallel open&close General Hand by Crank Lever)(平行开闭)(Sliding Part:Metal Guide)						
Auto Switch(磁性开关)	RS2(Auto switch of direct contact type)(有接点磁性开关)						

Note 1) Clean Air is contained solidity of 99.9% fluid oil and 0.3% supersaturated wet through filtering 3~10µm  
(洁净空气:用3~10µm过滤器,过滤掉99.9%水份和液体油含0.3%固体物的洁净空气.)

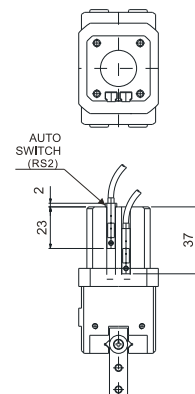
Note 2) Please Use Turbine Oil 1st-Grade ISOVG32.If Necessary. (如需要润滑, 请用透平1号油ISOVG32.)

### Dimensions(mm)(外形尺寸图(毫米))

#### TMHK20



#### TMHK20-RS2



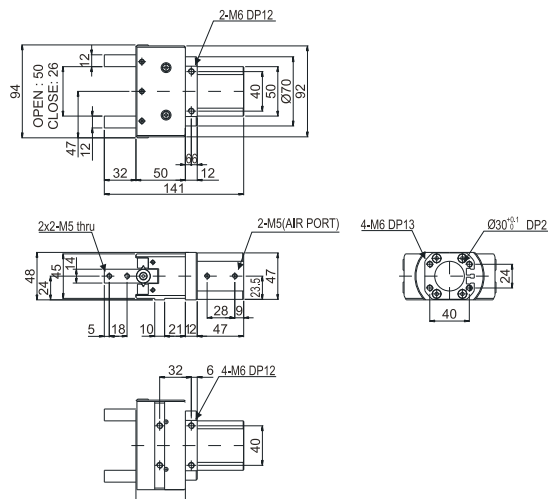
Please contact us on any small problem and details.  
更详细的图以及问题, 请直接与本公司联络。

# 中型平行开闭气动手指 General Hand

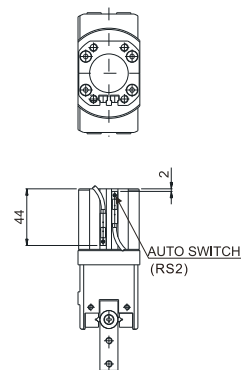
## TMHK Series

### Dimensions(mm)(外形尺寸图(毫米))

#### TMHK30

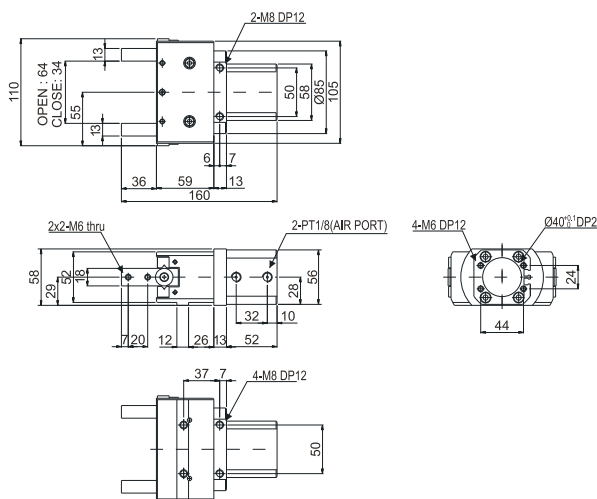


#### TMHK30-RS2

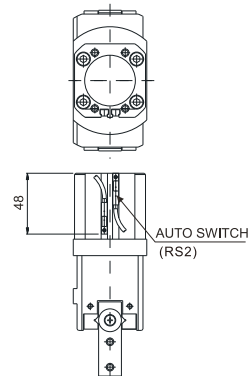


### Dimensions(mm)(外形尺寸图(毫米))

#### TMHK40

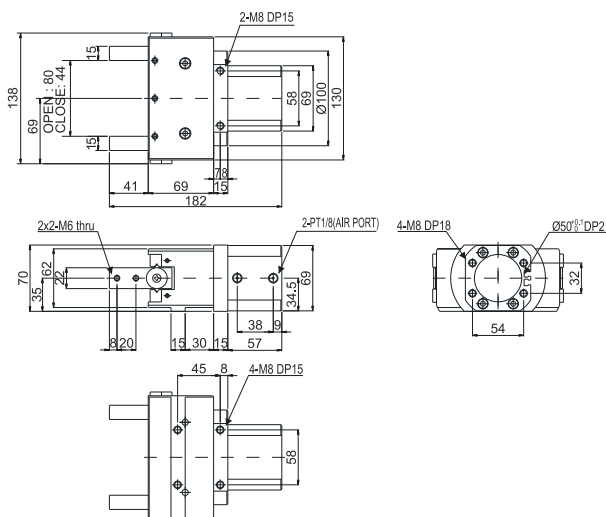


#### TMHK40-RS2

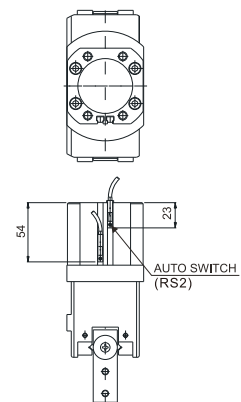


### Dimensions(mm)(外形尺寸图(毫米))

#### TMHK50

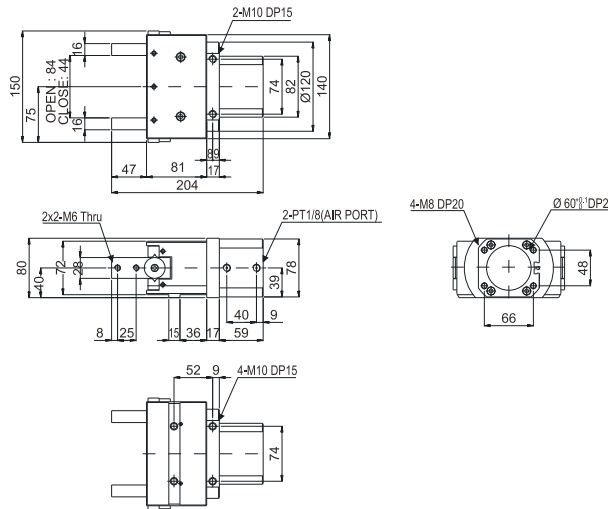


#### TMHK50-RS2

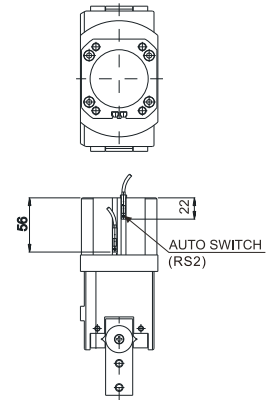


### Dimensions(mm)(外形尺寸图(毫米))

**TMHK60**

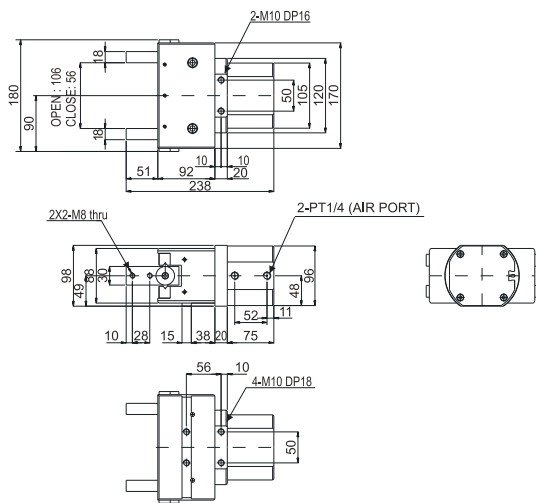


**TMHK60-RS2**

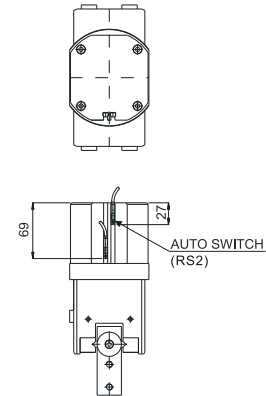


### Dimensions(mm)(外形尺寸图(毫米))

**TMHK80**

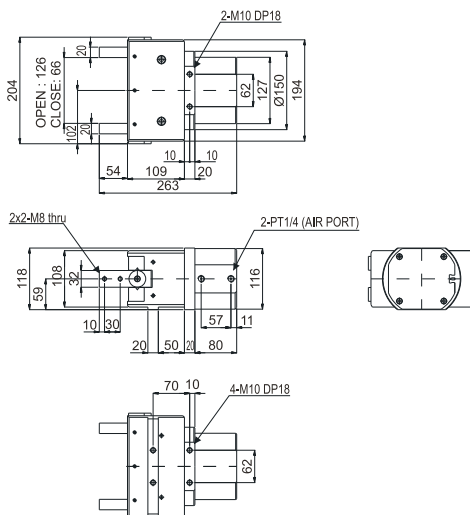


**TMHK80-RS2**

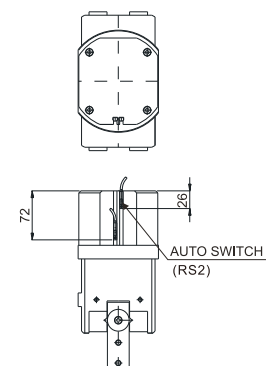


### Dimensions(mm)(外形尺寸图(毫米))

**TMHK100**



**TMHK100-RS2**

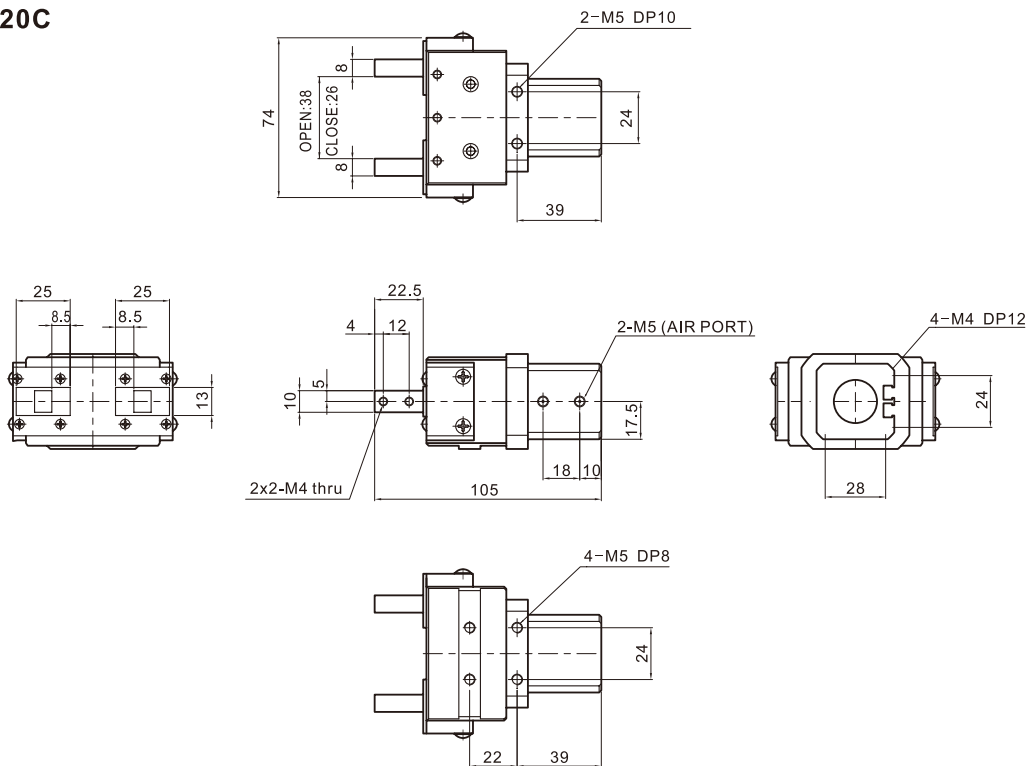


# 中型平行开闭气动手指 General Hand

## TMHK Series

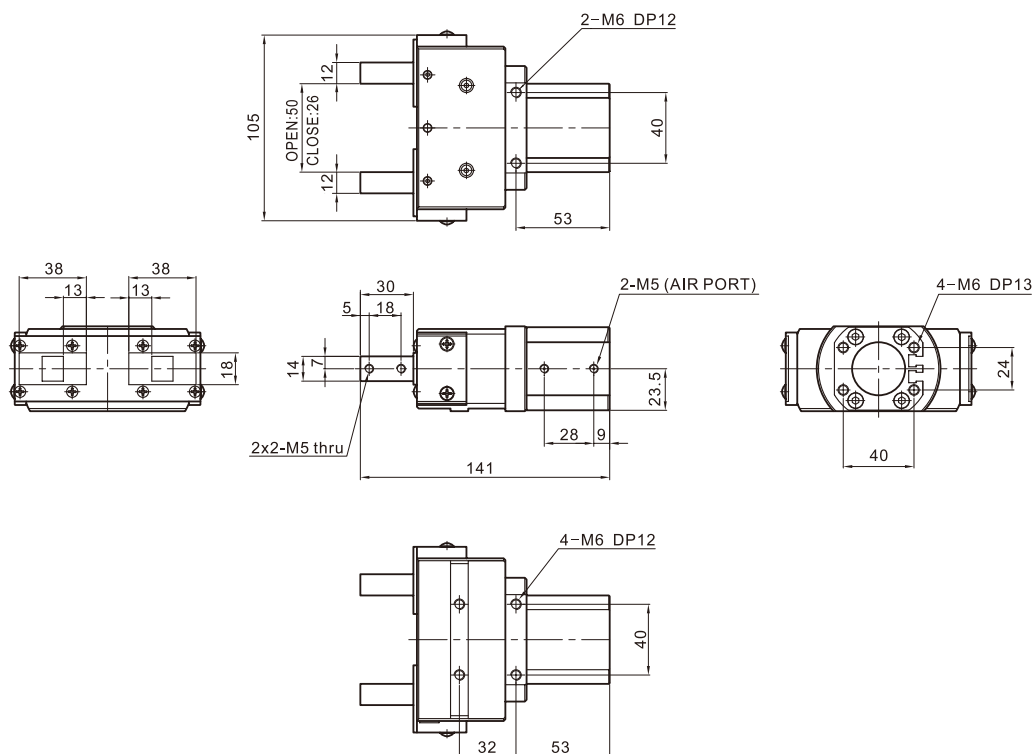
### Dimensions(mm)(外形尺寸图(毫米))

#### TMHK20C



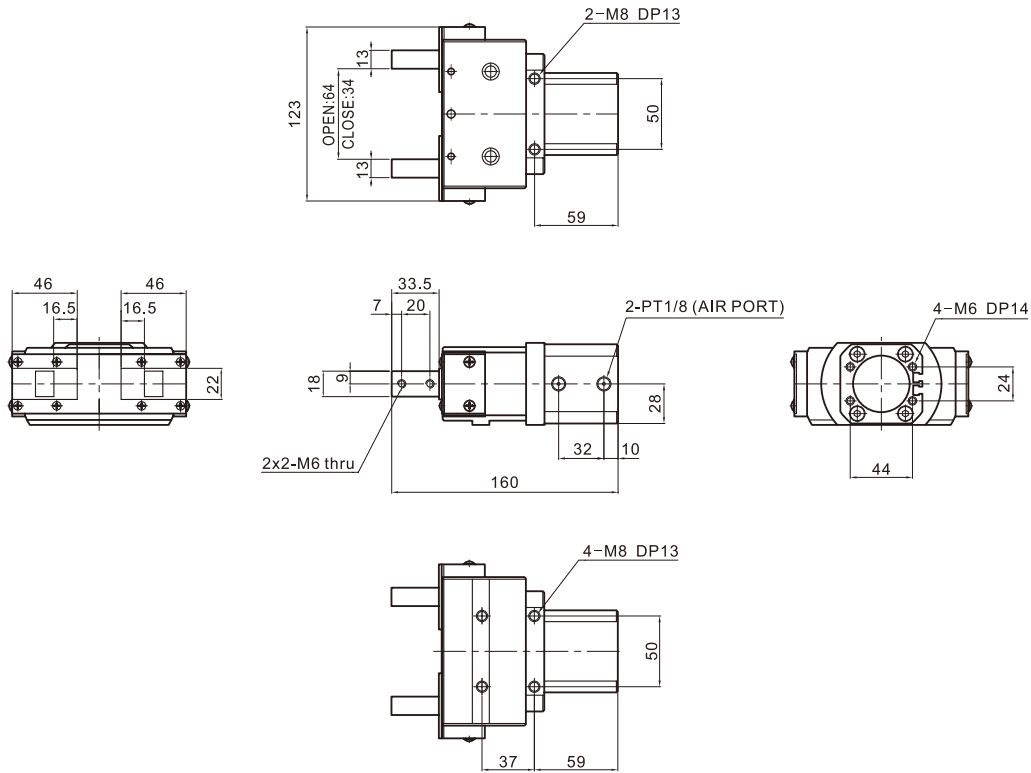
### Dimensions(mm)(外形尺寸图(毫米))

#### TMHK30C



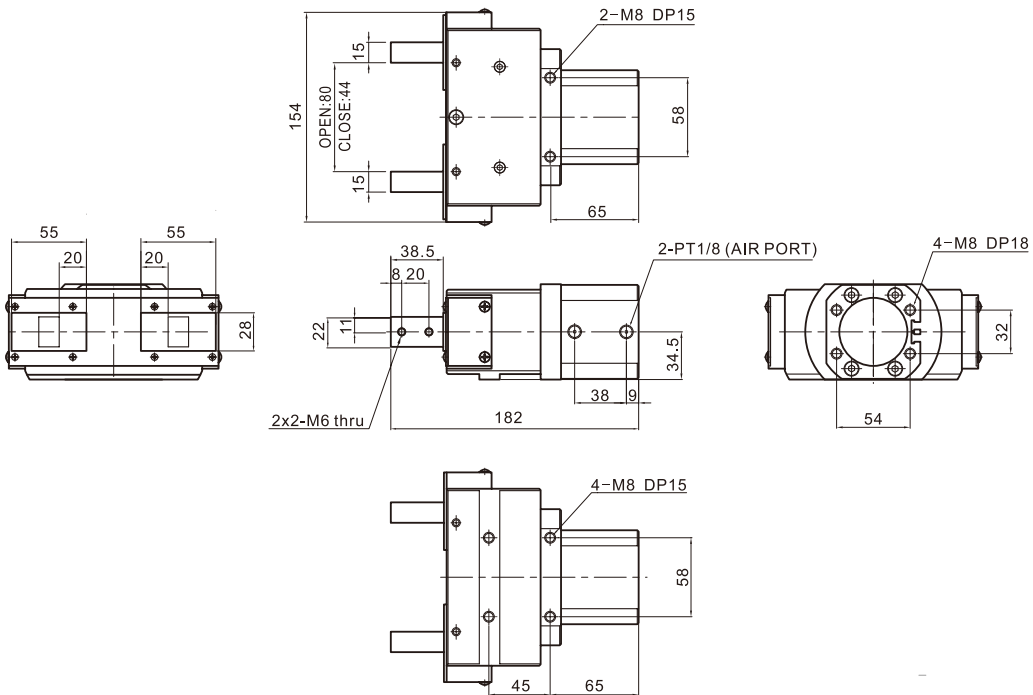
Dimensions(mm)(外形尺寸图(毫米))

TMHK40C



Dimensions(mm)(外形尺寸图(毫米))

TMHK50C

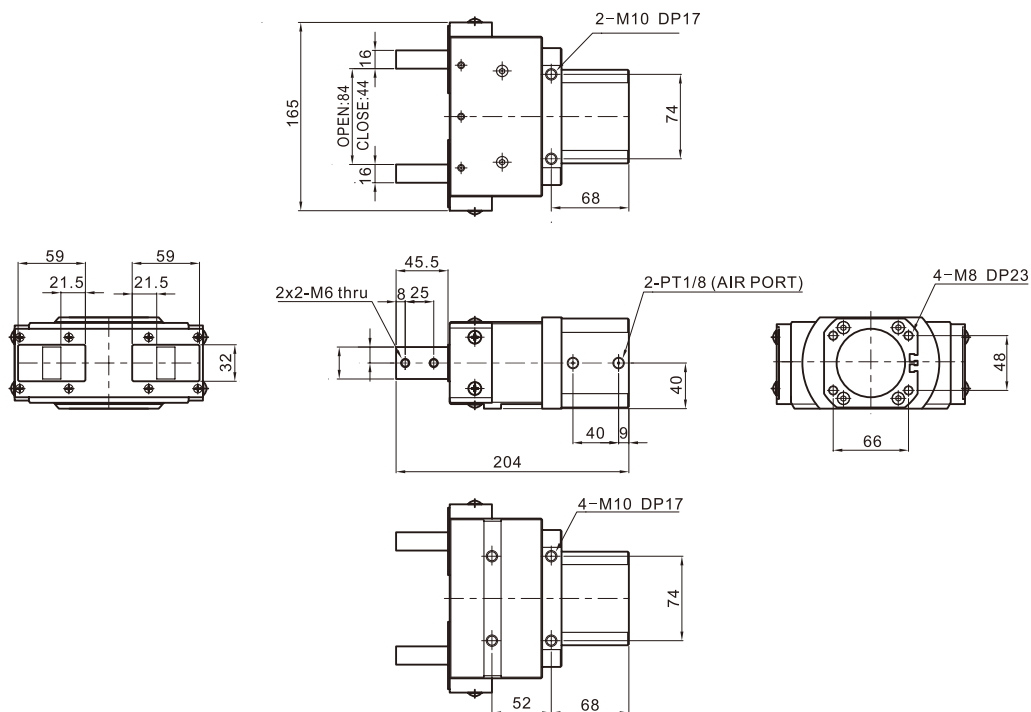


# 中型平行开闭气动手指 General Hand

## TMHK Series

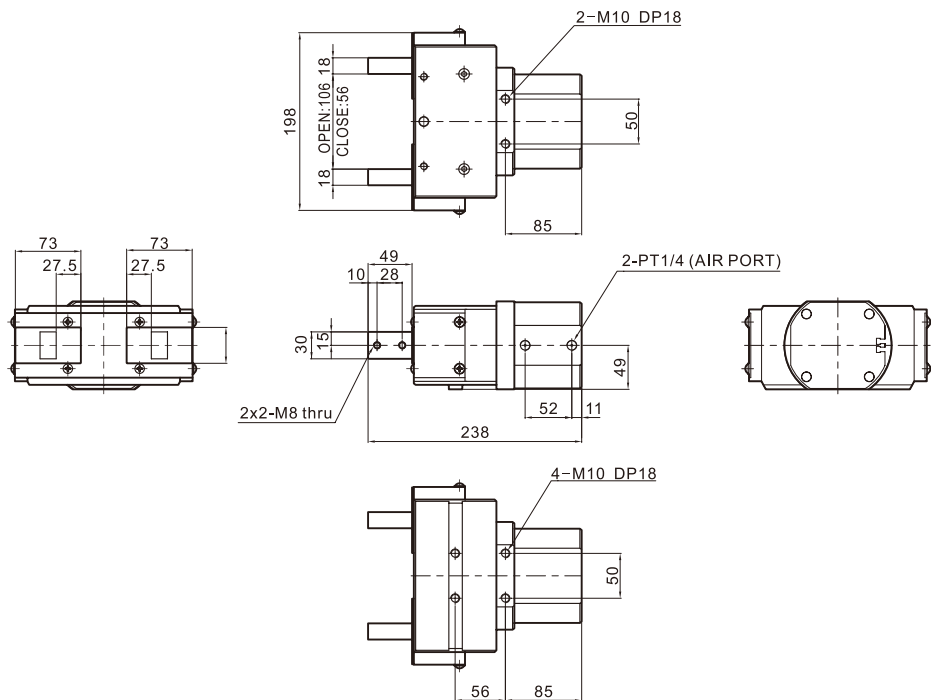
### Dimensions(mm)(外形尺寸图(毫米))

#### TMHK60C



### Dimensions(mm)(外形尺寸图(毫米))

#### TMHK80C



Dimensions(mm)(外形尺寸图(毫米))

TMHK100C

