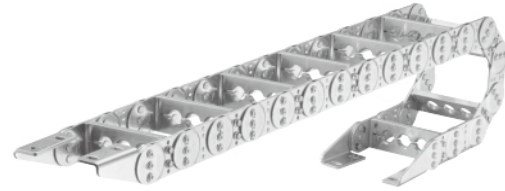


### Application(应用)

Iron and steel mill facility, Machining center, Conveying machine, Automobile industry, Industrial Plant Facility, Cold Stripping and Rolling Facilities and most of industrial application.

适用于制铁、制钢厂、加工中心、移送设备、汽车生产线等诸多机械领域。



### Features(特征)

- Long life and durability are ensured from steel chain and aluminum supporter.
- Link Plate is designed for the best safety.
- Customized holes of supporter provide better support for cables and host.
- For extensive motion, I- or V-type is recommended.
- 25 various models are manufactured.
- Standardized design is good for transporting machine, milling machine, iron-mill facility and most of industrial application.
- 采用钢制链条和铝支撑件, 经久耐用
- 侧链板设计符合最好的安全性
- 支撑板孔径可以定做, 所以更好的支持电缆
- 移动量大的情况下选择I型, V型
- 有25种类型生产
- 适用移送设备, 加工设备, 钢铁厂等诸多机械设备的标准型

### Operation(使用环境)

Since HS Type cableveyor is standard model for many use in industrial application, the supporter is made of aluminum to ensure long stroke and durability in harsh environment. For moisture environment, plate can be made of stainless steel.

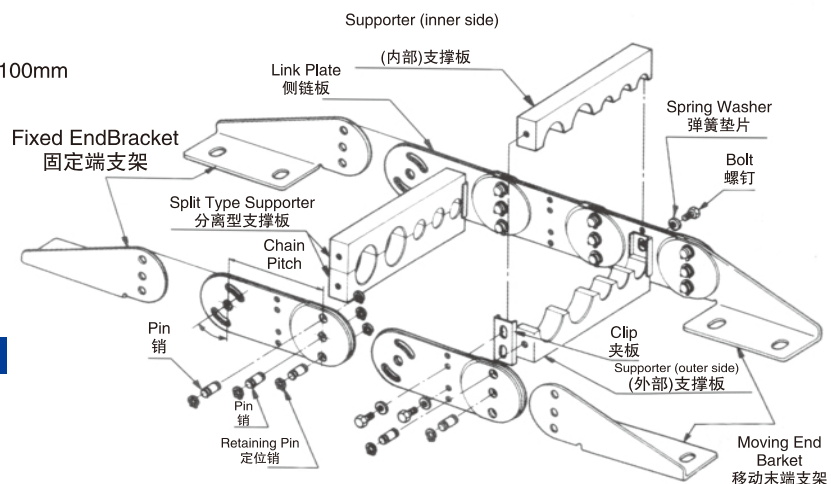
Hole of support is manufactured according to customer's cable and hose specification.

HS 系列托链的支持件采用的是铝制的, 在潮湿环境(易生锈)情况下, 侧链板可以是不锈钢的, 支撑板孔也可按电缆和软管规格定做。

### Properties(主要规格)

- Moving Velocity: below 60m/min
- Diameter of Cable Hose: less than 100mm
- Operating Temperature: -25~200°C
- Basic Color: White Zinc Coating
- Material: S45CM-S, Aluminum
- 移送速度: 60m/min以下
- 线缆孔直径: 100mm以下
- 使用温度: -25~200°C
- 基本色: 镀锌白
- 材料: S45CM-S, 铝

### Structure(结构)



# 拖链/钢型

## Chain/Steel Type

### HS 070 Series

#### How To Order (型号表示方法)

HS070 - 145R - B200 - 3500L - 3SETS

Type  
型号

Radius  
弯曲半径

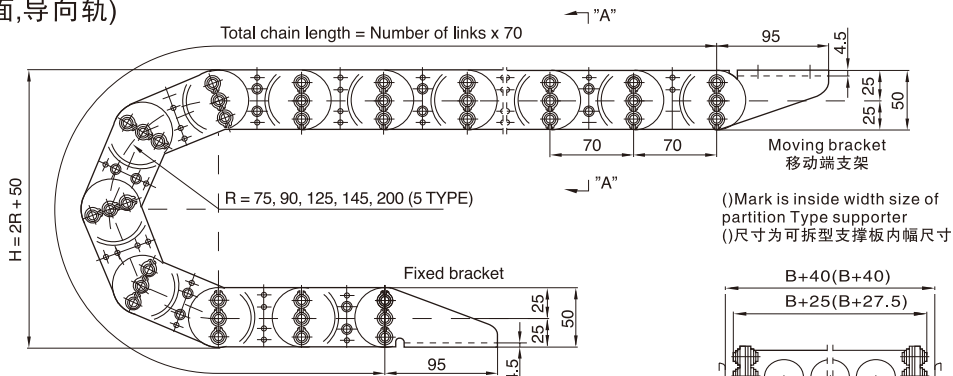
Width  
幅

Length  
使用长度

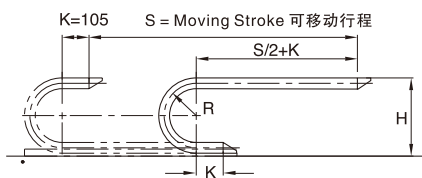
Q'ty  
订货量

#### Dimensions(mm)(外形尺寸图(毫米))

#### Chain, Cross Section, Guide Rail (轨条, 横截面, 导向轨)



( ) Mark is inside width size of partition Type supporter  
( ) 尺寸为可拆型支撑板内幅尺寸



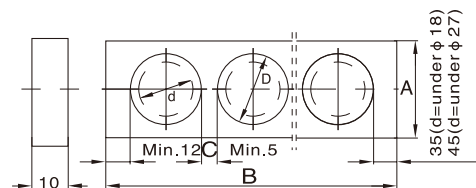
Length(拖链长度)  $L = \frac{S}{2} + \pi R + 210$

- Radius(弯曲半径)
- Height(高度)

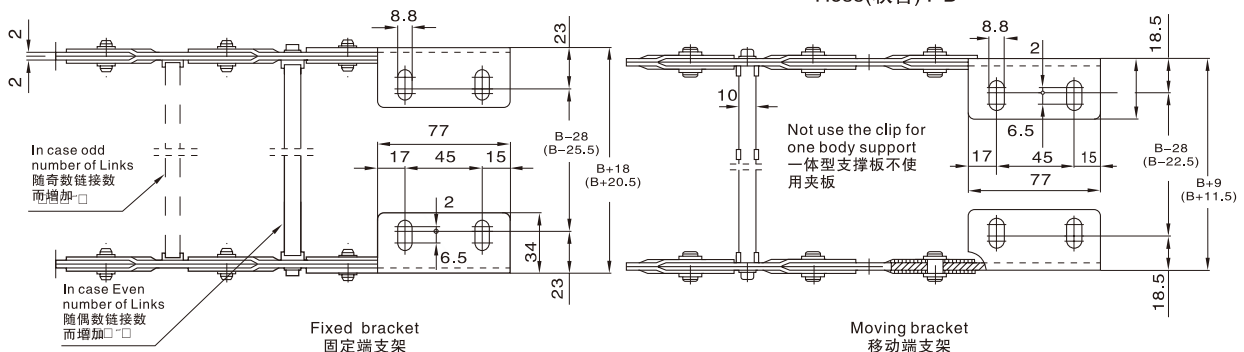
R	75	90	125	145	200
H	200	230	300	340	450

#### Supporter(支撑板)

Cable/Hose dmax 最大直径	"A"				"B"			
	60	80	100	125	150	200	250	300
Ø18	o	o	o	o	o	o	-	-
Ø27	o	o	o	o	o	o	o	o



#### Brackets(支架)



How To Order (型号表示方法)

HS095 - 300R - B250 - 4560L - 3SETS

Type  
型号

Radius  
弯曲半径

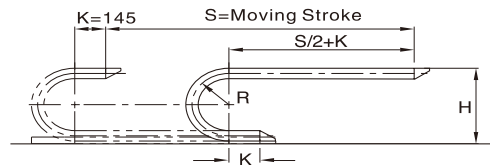
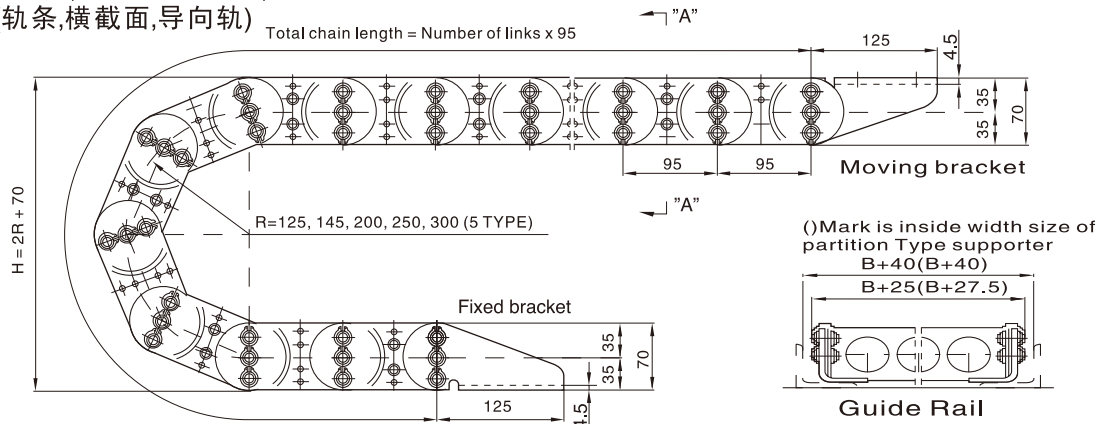
Width  
幅

Length  
使用长度

Q'ty  
订货量

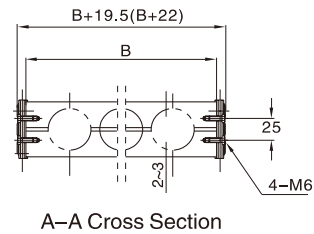
Dimensions(mm)(外形尺寸图(毫米))

Chain, Cross Section, Guide Rail  
(轨条, 横截面, 导向轨)



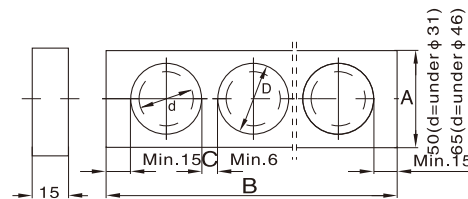
Length  $L = \frac{S}{2} + \pi R + 290$

Radius	R	125	145	200	250	300
Height	H	320	360	470	570	670



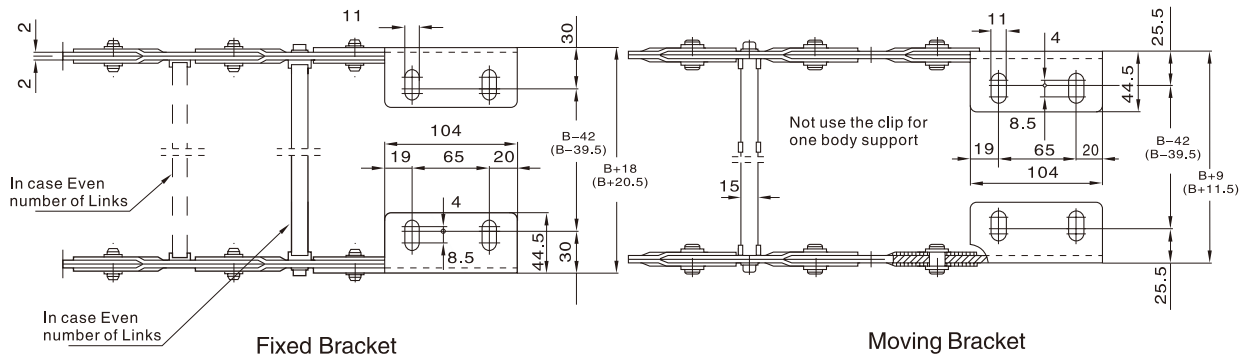
Supporter(支撑板)

Cable/Hose	"A"				"B"			
dmax 最大直径	80	100	125	150	200	300	350	400
Ø31	0	0	0	0	0	0	0	0
Ø46	65	0	0	0	0	0	0	0



Cable:  $D \geq d \times 1.1$   
Hose:  $D \geq d \times 1.2$

Brackets(支架)



# 拖链/钢型

## Chain/Steel Type

### HS 130 Series

#### How To Order (型号表示方法)

HS130 - 400R - B500 - 5980L - 3SETS

Type  
型号

Radius  
弯曲半径

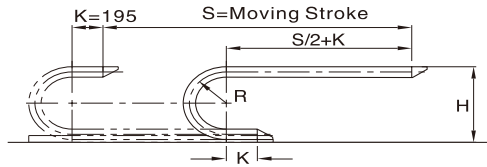
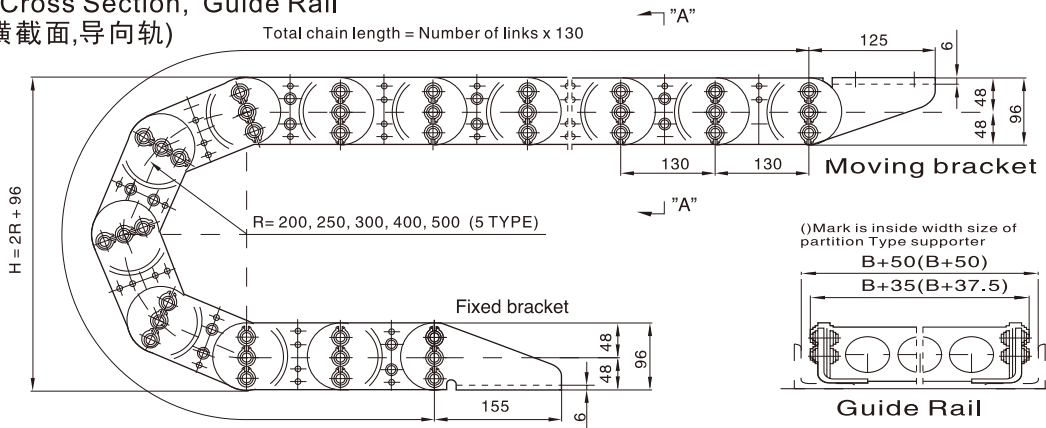
Width  
幅

Length  
使用长度

Q'ty  
订货量

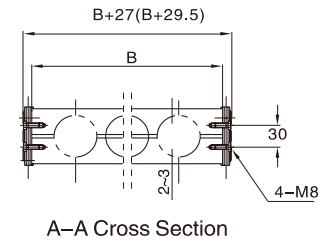
#### Dimensions(mm)(外形尺寸图(毫米))

##### Chain, Cross Section, Guide Rail (轨条, 横截面, 导向轨)



Length  $L = \frac{S}{2} + \pi R + 390$

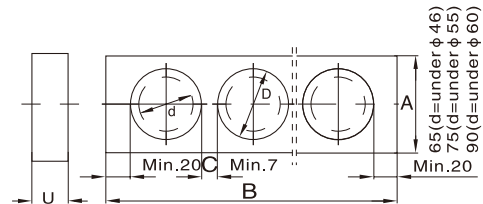
Radius	R	200	250	300	400	500
Height	H	496	596	696	896	1096



##### Supporter(支撑板)

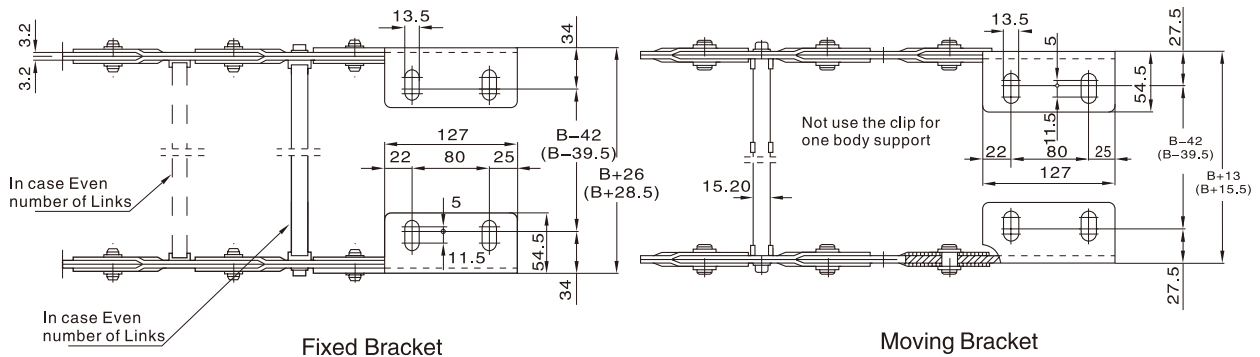
(○): U=15, (●): U=20

Cable/Hose	"A"					"B"				
dmax 最大直径	100	125	150	200	250	300	350	400	500	
Ø46	o	o	o	o	o	o	o	o	o	
Ø55	o	o	o	o	o	o	o	o	o	
Ø60	o	o	o	o	o	o	o	o	o	



Cable:  $D \geq d \times 1.1$   
Hose:  $D \geq d \times 1.2$

##### Brackets(支架)



# 拖链/钢型 Chain/Steel Type HS 180 Series

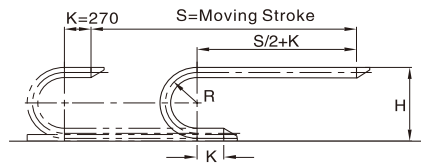
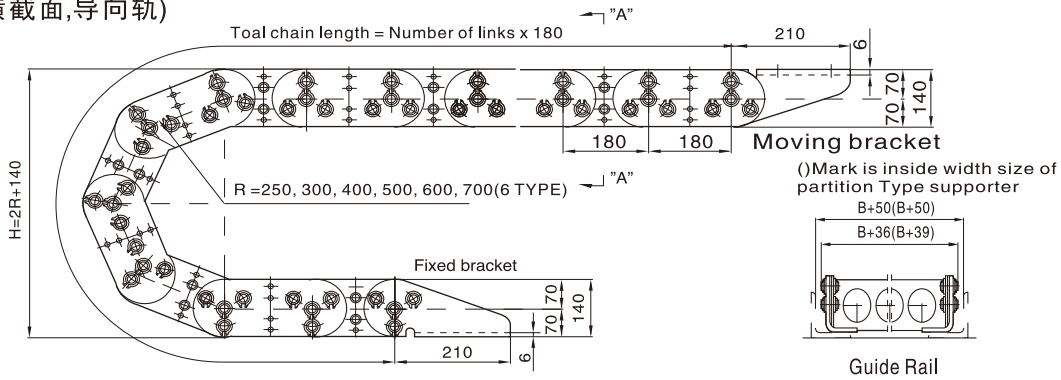
## How To Order (型号表示方法)

HS180 - 
 700R - 
 B600 - 
 7920L - 
 3SETS

Type 型号	Radius 弯曲半径	Width 幅	Length 使用长度	Q'ty 订货量
------------	----------------	------------	----------------	-------------

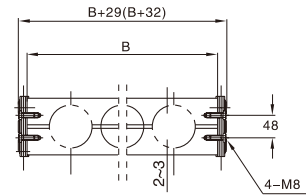
## Dimensions(mm)(外形尺寸图(毫米))

### Chain, Cross Section, Guide Rail (轨条, 横截面, 导向轨)



• Length  $L = \frac{S}{2} + \pi R + 540$

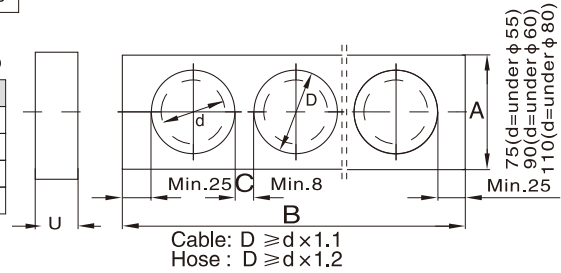
• Radius	R	250	300	400	500	700
• Height	H	640	740	940	1140	1540



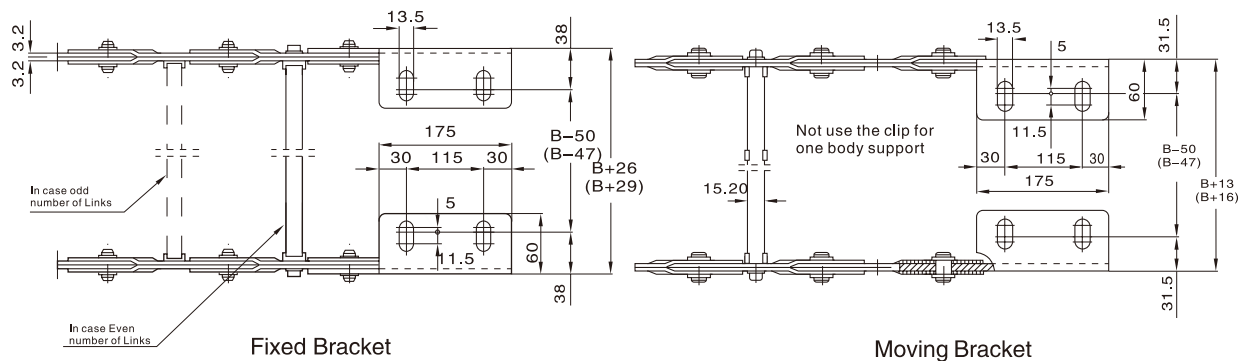
### Supporter(支撑板)

(○): U=15, (●): U=20

Cable/Hose	"A"					"B"									
	dmax 最大直径	100	125	150	200	250	300	350	450	400	500	550	600		
Ø55	75	0	0	0	0	0	0	0	0	0	0	0	0		
Ø60	90	0	0	0	0	0	0	0	0	0	0	0	0		
Ø80	110	0	0	0	0	0	0	0	0	0	0	0	0		



### Brackets(支架)



# 拖链/钢型

## Chain/Steel Type

### HS 250 Series

#### How To Order (型号表示方法)

HS250 - 750R - B600 - 9750L - 3SETS

Type  
型号

Radius  
弯曲半径

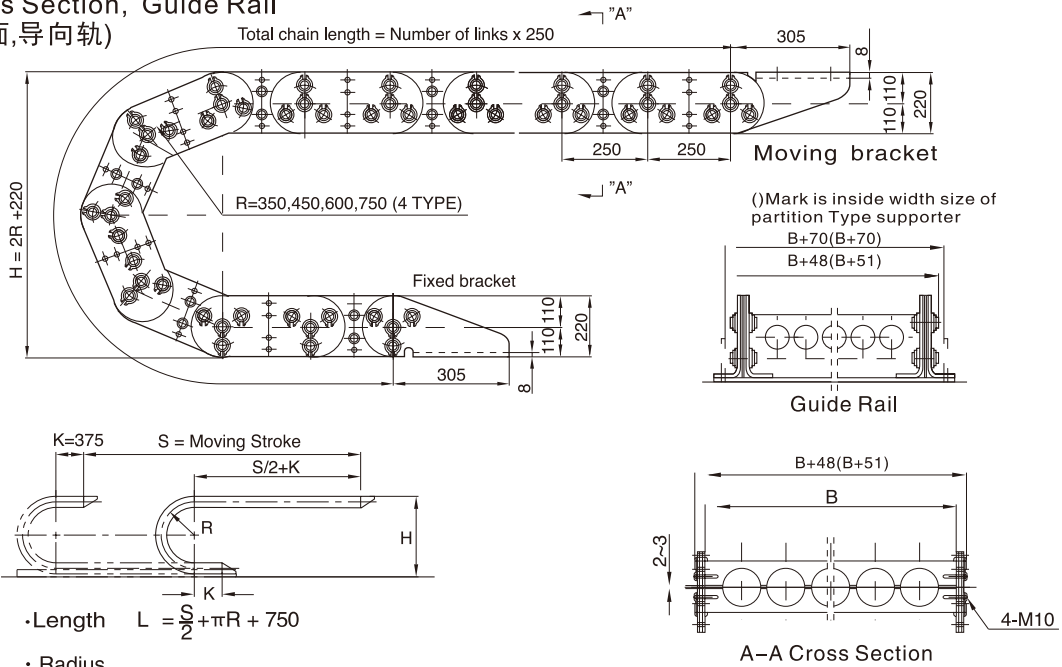
Width  
幅

Length  
使用长度

Q'ty  
订货量

#### Dimensions(mm)(外形尺寸图(毫米))

##### Chain, Cross Section, Guide Rail (轨条, 横截面, 导向轨)



• Length  $L = \frac{\pi}{2} + \pi R + 750$

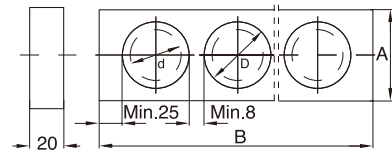
• Radius

• Height

R	350	450	600	750
H	920	1120	1420	1720

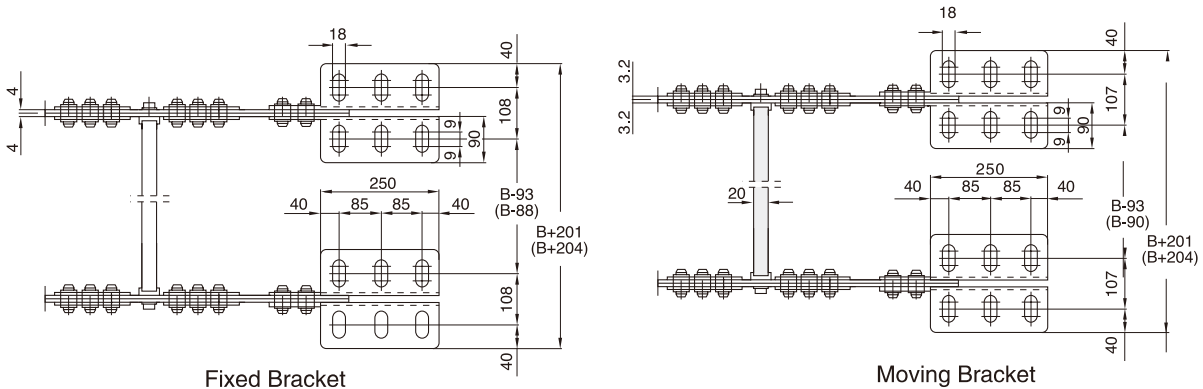
##### Supporter(支撑板)

Cable/Hose d <sub>max</sub> 最大直径	"A"			"B"		
	350	400	450	500	550	600
Ø80	o	o	o	o	o	o
Ø110	150	-	o	o	o	o
Ø110over	Call us	-	o	o	o	o

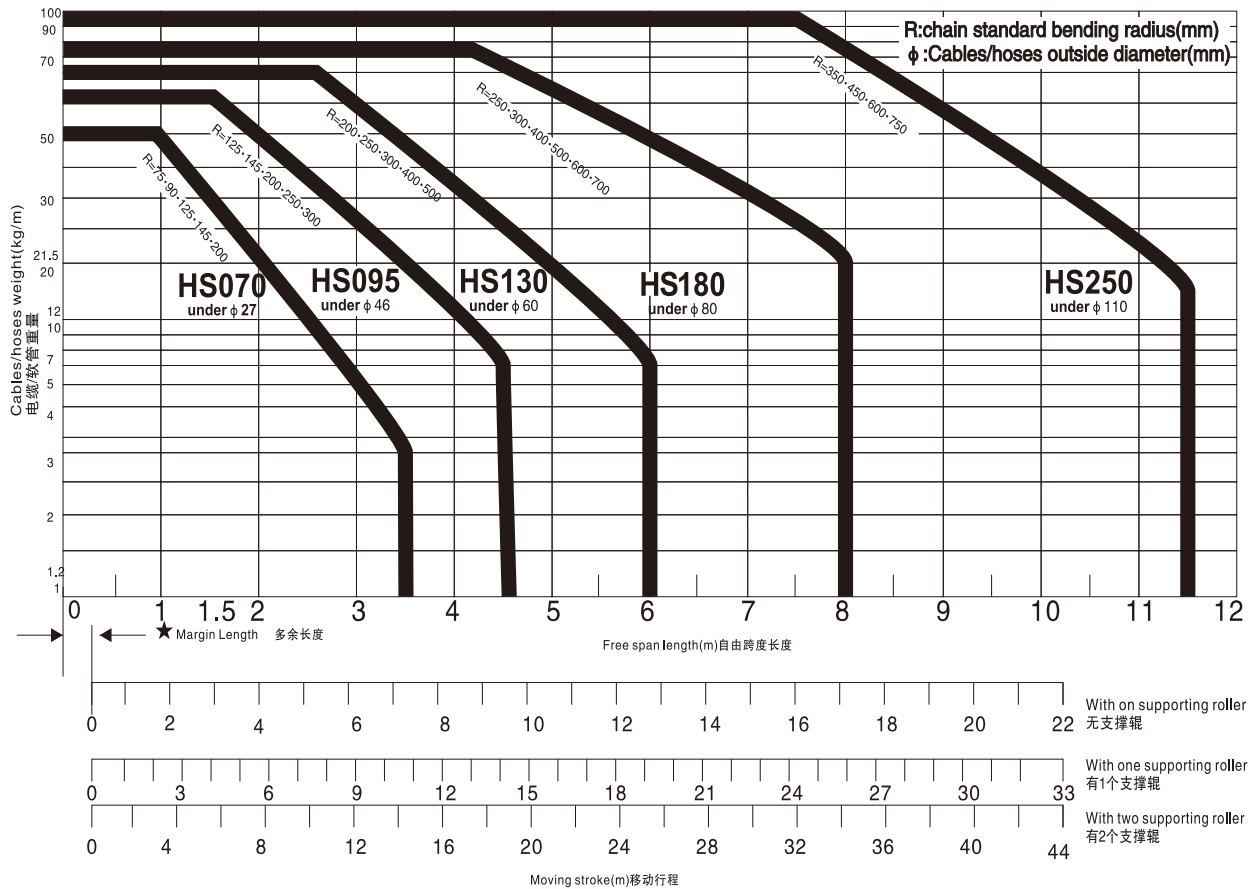


Cable:  $D \geq d \times 1.1$   
Hose:  $D \geq d \times 1.2$

##### Stand Support(支架)



## Capability Graph(能力曲线)



## Supporter Roller Stroke & Support Roller(移动行程及支撑辊)

Free span is a straight (horizontal) length of cableveyor on normal conditions.

Free span length is depend on the weight of cableveyor or hose.

If the half of distance required to move the machine go over the free span, make extend the moving stroke by support orller. support orller extend the free span length

Two support orller extend the free span length.

自由跨度指拖链正常水平笔直的距离,自由跨度的长短取决于电缆或软管的重量. 如果机械移动所需距离的一半超过自由跨度时必须使用支撑辊增加移动距离, 支撑辊可以延伸自由跨度距离.

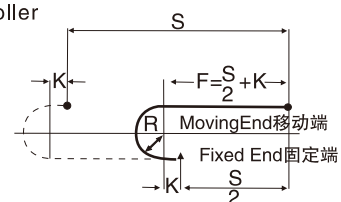
S:(Stroke) 行程

K:(Margin Length) 多余长度

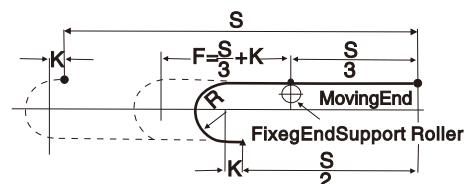
F:Free Span 自由跨度

In case no support roller

无支撑辊情况



One support roller extend the free span to three times  
1个支撑辊延长自由跨度的3倍时的情况



Two support roller extend the free span to four times  
2个支撑辊延长自由跨度的2倍时的情况

