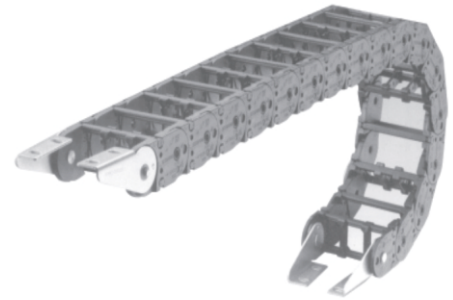


# 拖链/塑料型 Chain/Plastic HSSP Series

## Application(应用)

Applicable for long stroke use such as Machining center, Conveying machine, Automobile industry, Industrial Plant Facility, Automatic Soldering Machine, Industrial Robot and so forth

适用于长行程的设备, 例如加工中心, 移送设备, 工业自动化, 自动焊接设备, 工业机器人等



## Features(特征)

- HSSP Types is made of engineering plastic to lighten the weight splicable for long stroke
- Easy manipulation and adjustable divider
- Food for machining center and long stroke application
- 15 various models are manufactured.
- Side cover and slider are attachable to link plate for ;ong stroke movement.
- HSSP系列是将HS和HSS轻量化的产品, 因为其材质是工程塑料, 所以轻, 柔韧性强
- 电缆、软管拆装方便, 隔板可以自由调整
- 适用于长行程的加工中心
- 为了侧链板行程移动, 可加装侧盖板和滑道
- 适用于加工中心, 移送设备, 自动焊接机, 工业机器人等成行程设备

## Operation(使用环境)

HSSP Type cableveeyor is made of highly durable engineering plastic. It features light weight and less noise and easy handling.

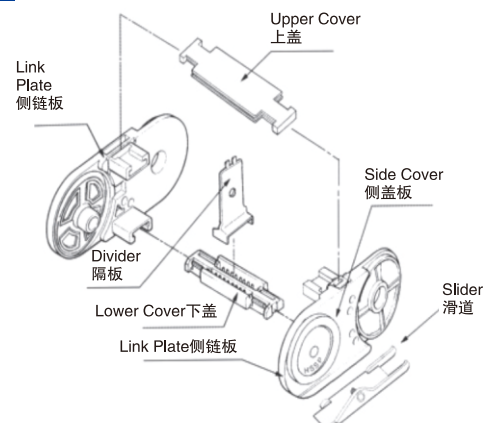
Supporter part of cable hose is made of engineering plastic or aluminum to lighten the weight. This feature also contributes long stroke application.

HSSP系列拖链使用的是高强度工程塑料材质, 轻量, 噪单低、并易于制作. 支撑件是由工程塑料或铝制成的, 减轻了重量, 并适用于长行程.

## Properties(主要规格)

- |   |  |
|---|--|
| <ul style="list-style-type: none"> <li>• Moving Velocity: below 120m/min</li> <li>• Diameter of Cable Hose: less than 63mm</li> <li>• Operating Temperature: -25~100°C</li> <li>• Tension: 190(in dry), 120(in moisture) N/mm<sup>2</sup></li> <li>• Stretch: 4(in dry), 6(in moisture)%</li> <li>• Elasticity: 10000 (in dry), 7000 (in moisture) N/mm<sup>2</sup></li> <li>• Sliding Friction: 0.4 (non-greased)</li> <li>• Basic Color: White Zine Coating</li> <li>• Material: Engineering Plastic, Aluminum</li> </ul> | <ul style="list-style-type: none"> <li>• 移送速度: 120m/min以下</li> <li>• 电缆软管直径: 63mm以下</li> <li>• 使用温度: -25~100°C</li> <li>• 张力: 190 (干燥), 120 (潮湿环境) N/mm<sup>2</sup></li> <li>• 延伸率: 4%(干燥), 6%(潮湿环境)</li> <li>• 弹性系数: 10000 (干燥), 7000(潮湿) N/mm<sup>2</sup></li> <li>• 滑动摩擦: 0.4(无润滑时)</li> <li>• 基本色: 黑色</li> <li>• 材质: 工程塑料、铝</li> </ul> |
|---|--|

## Structure(结构)



# 拖链/塑料型 Chain/Plastic

## HSSP 070N Series

### How To Order (型号表示方法)

HSSP070N - 145R - B200 - D:3 - 2940L - 3SETS

Type  
型号

Radius  
弯曲半径

Width  
幅

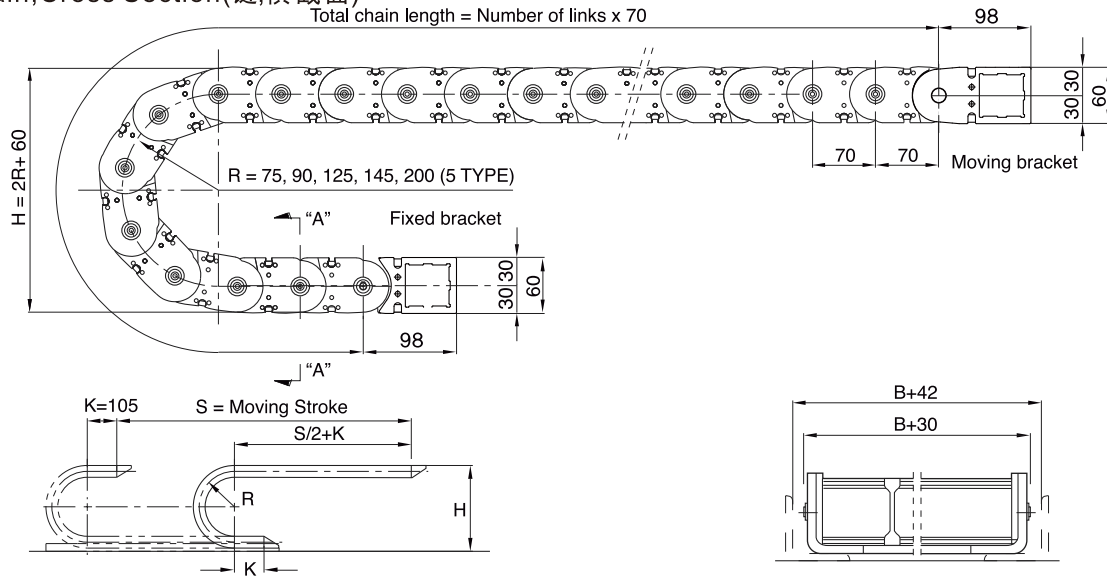
Divider  
分割

Length  
使用长度

Qty  
订货量

### Dimensions(mm)(外形尺寸图(毫米))

#### Chain, Cross Section (链, 横截面)

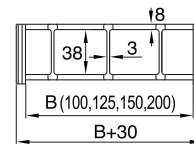


- Length(拖链长度)  $L = S/2 + \pi R + 210$
- Radius(弯曲半径)
- Height(高度)

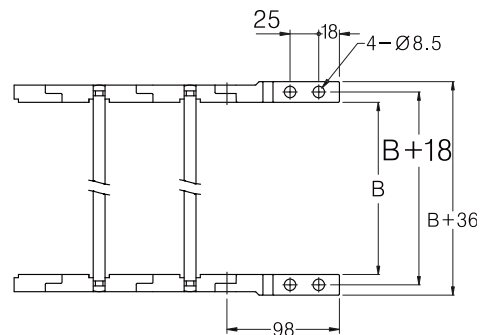
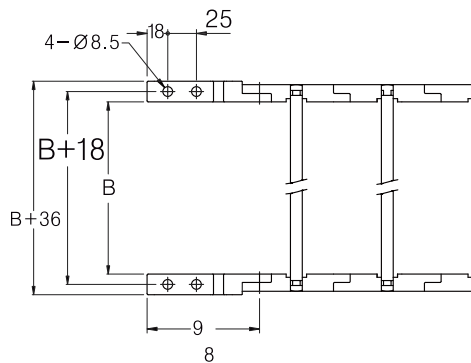
R	75	90	125	145	200
H	210	240	310	350	460

#### Divider(隔板)

Cable/Hose dmax	Ø32				
Frame Dimen. "B"	100	125	150	200	250
Divider Min.No	0	1	1	2	3
Divider Max.No	3	4	5	6	7



#### Brackets(端接头)



How To Order (型号表示方法)

HSS070NS - 145R - B200 - D:3 - 15050L - 2SETS

Type  
型号

Radius  
弯曲半径

Width  
幅

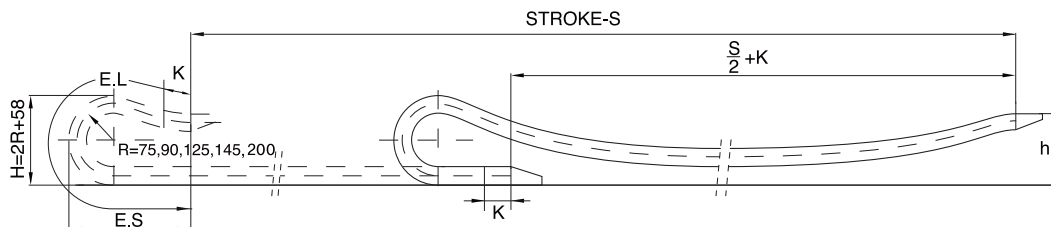
Divider  
分割

Length  
使用长度

Q'ty  
订货量

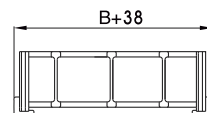
Dimensions(mm)(外形尺寸图(毫米))

Chain(轨条)

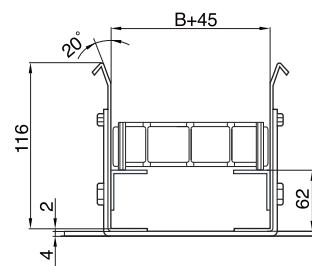
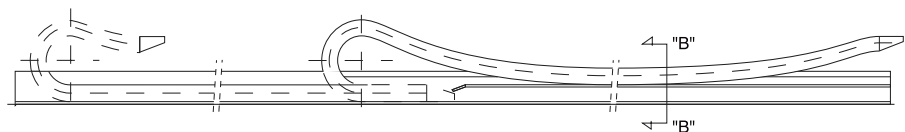


- Length(拖链长度)  $L=S/2+E.L+210$
- Radius(弯曲半径)
- Height(高度)
- Moving Point Height
- Extra Length
- Extra Space

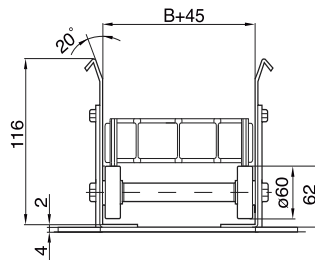
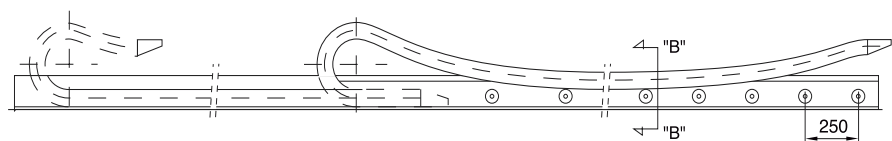
R	75	90	125	145	200
H	210	240	310	350	460
h	200	200	200	200	200
E.L	560	700	910	1050	1470
E.S	230	260	380	450	580



Guide Rail(导向轨)



Guide Roller(导辊)



# 拖链/塑料型 Chain/Plastic

## HSSP 095N Series

### How To Order (型号表示方法)

HSS095N - 300R - B200 - D:3 - 3990L - 3SETS

Type  
型号

Radius  
弯曲半径

Width  
幅

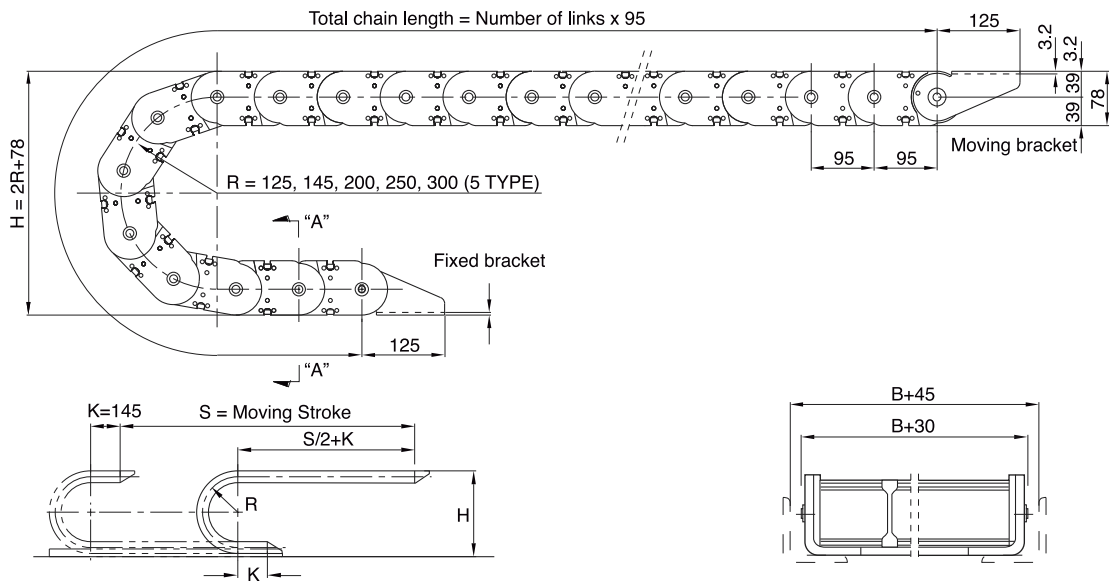
Divider  
分割

Length  
使用长度

Q'ty  
订货量

### Dimensions(mm)(外形尺寸图(毫米))

#### Chain, Cross Section (链, 横截面)

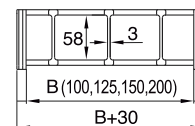


- Length(拖链长度)  $L = S/2 + \pi R + 290$
- Radius(弯曲半径)
- Height(高度)

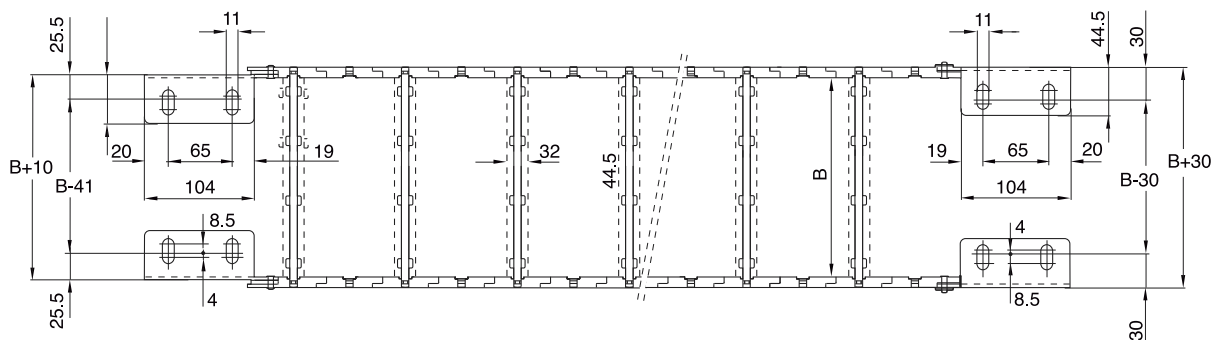
R	125	145	200	250	300
H	328	368	478	578	678

#### Divider(隔板)

Cable/Hose dmax	Ø52					
Frame Dimen. "B"	100	125	150	200	250	300
Divider Min.No	0	1	1	2	3	4
Divider Max.No	3	4	5	6	7	8



#### Brackets(端接头)



How To Order (型号表示方法)

HSS095NS - 300R - B200 - D:3 - 19950L - 2SETS

Type  
型号

Radius  
弯曲半径

Width  
幅

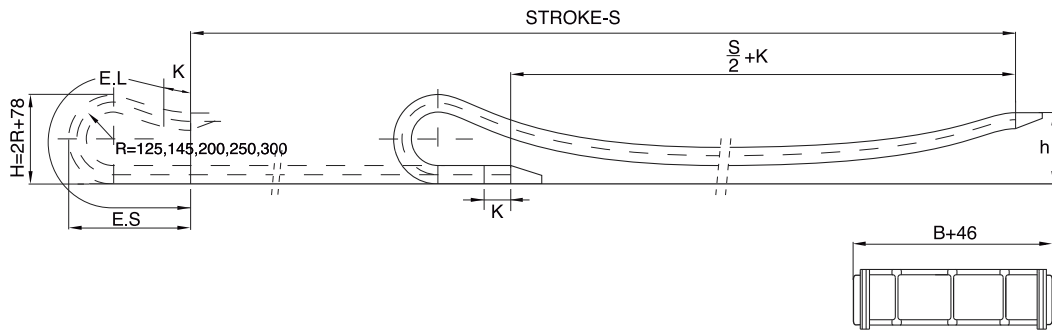
Divider  
分割

Length  
使用长度

Q'ty  
订货量

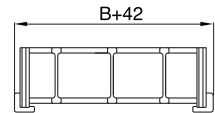
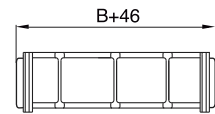
Dimensions(mm)(外形尺寸图(毫米))

Chain(轨条)

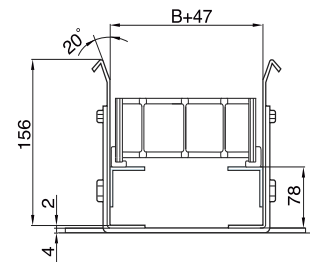
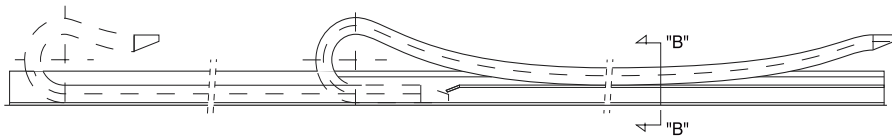


- Length(拖链长度)  $L=S/2+E.L+290$
- Radius(弯曲半径)
- Height(高度)
- Moving Point Height
- Extra Length
- Extra Space

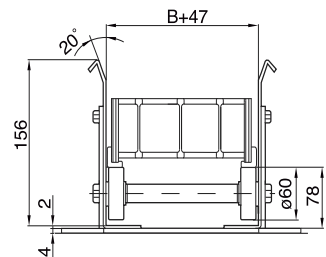
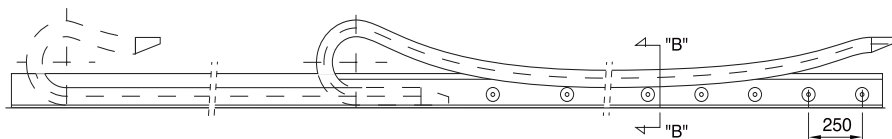
R	125	145	200	250	300
H	328	368	478	578	678
h	250	250	250	250	250
E.L	950	1140	1520	1900	2185
E.S	340	430	600	750	860



Guide Roller(导辊)



Guide Roller(导辊)



# 拖链/塑料型 Chain/Plastic

## HSSP 130 Series

### How To Order (型号表示方法)

HSSP 130 - 250R - B200 - D:3 - 4420L - 3SETS

Type  
型号

Radius  
弯曲半径

Width  
幅

Divider  
分割

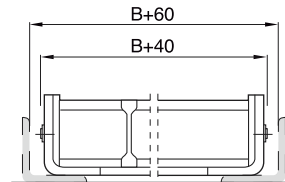
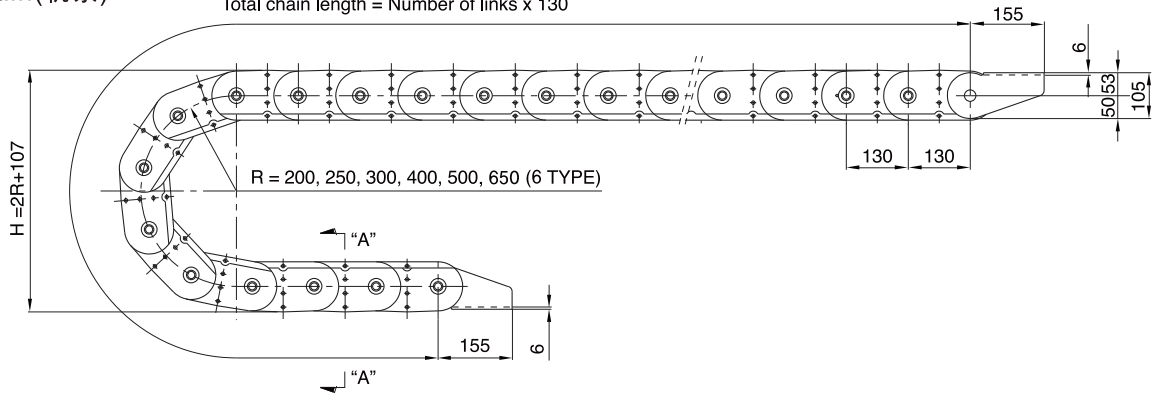
Length  
使用长度

Q'ty  
订货量

### Dimensions(mm)(外形尺寸图(毫米))

#### Chain(链条)

Total chain length = Number of links x 130

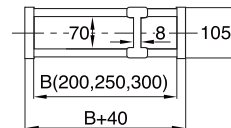


- Length(拖链长度)  $L = S/2 + \pi R + 390$
- Radius(弯曲半径)
- Height(高度)

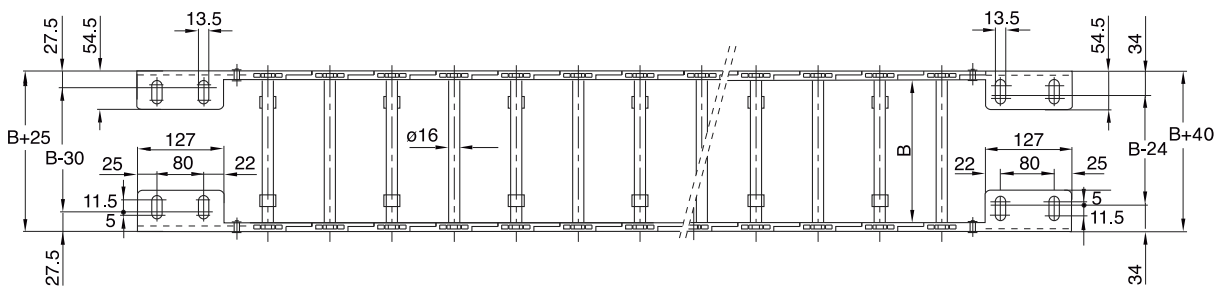
R	200	250	300	400	500	650
H	507	607	707	907	1107	1307

#### Divider(隔板)

Cable/Hose dmax	Ø63				
Frame Dimen. "B"	200	250	300	350	400
Divider Min.No	2	3	4	5	6
Divider Max.No	3	5	8	9	10



#### Brackets(端接头)



How To Order (型号表示方法)

HSSP 130S - 400R - B300 - D:3 - 24960L - 3SETS

Type  
型号

Radius  
弯曲半径

Width  
幅

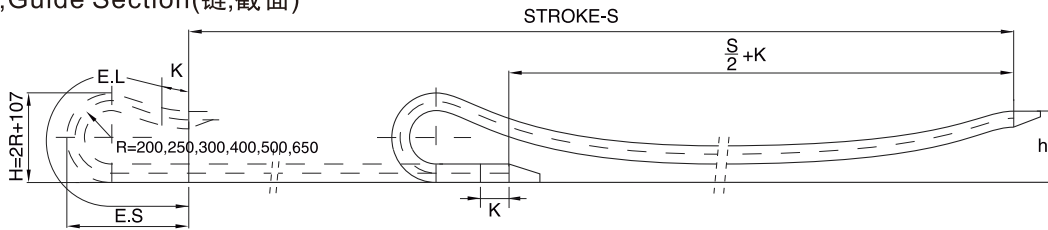
Divider  
分割

Length  
使用长度

Q'ty  
订货量

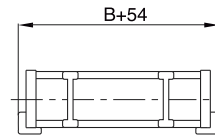
Dimensions(mm)(外形尺寸图(毫米))

Chain, Guide Section(链, 截面)

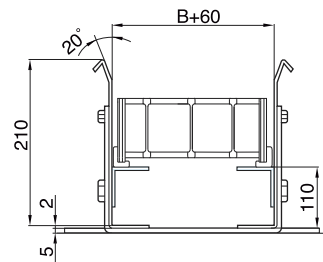
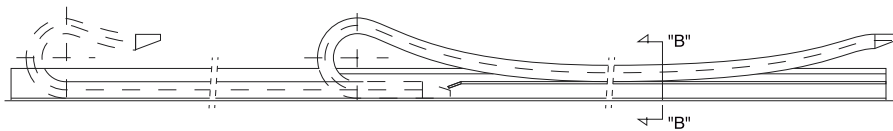


- Length(拖链长度)  $L=S/2+E.L+390$
- Radius(弯曲半径)
- Height(高度)
- Moving Point Height
- Extra Length
- Extra Space

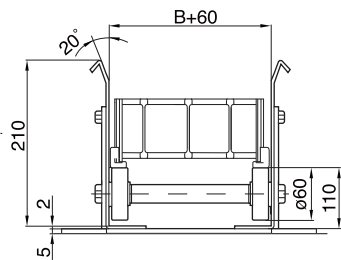
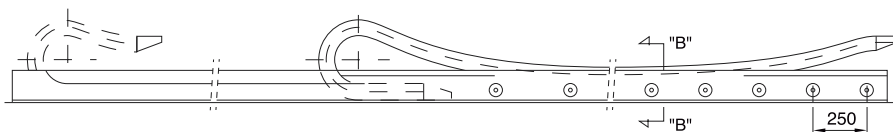
R	200	250	300	400	500	650
H	507	607	707	907	1107	1407
h	300	300	300	300	300	300
E.L	1560	1820	2210	2990	3640	4200
E.S	780	950	1100	1400	1700	2000



Guide Rail(导向轨)



Guide Roller(导辊)



# 拖链/塑料型 Chain/Plastic

## HSSP 100 Series

### How To Order (型号表示方法)

HSSP 100 - 250R - B200 - D:3 - 4400L - 3SETS

Type  
型号

Radius  
弯曲半径

Width  
幅

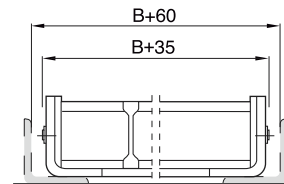
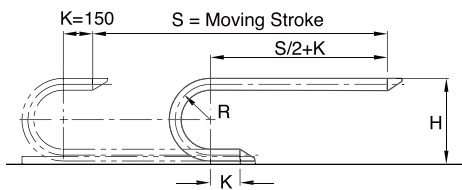
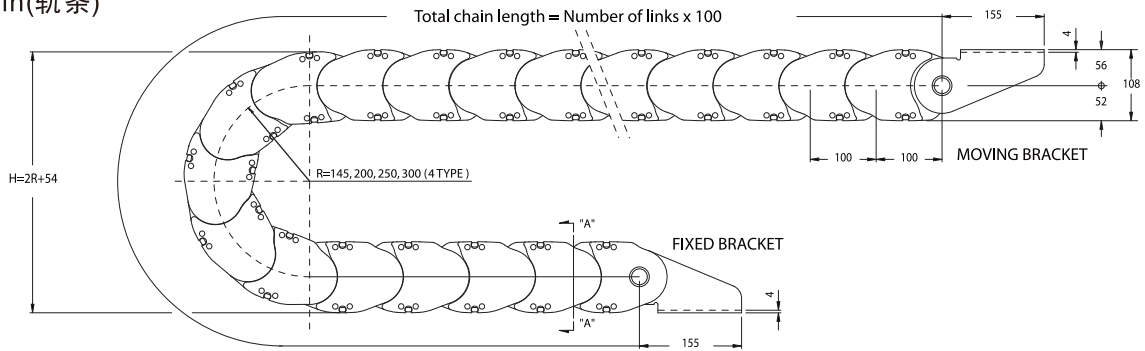
Divider  
分割

Length  
使用长度

Q'ty  
订货量

### Dimensions(mm)(外形尺寸图(毫米))

#### Chain(链条)

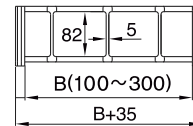


- Length(拖链长度)  $L=S/2+\pi R+300$
- Radius(弯曲半径)
- Height(高度)

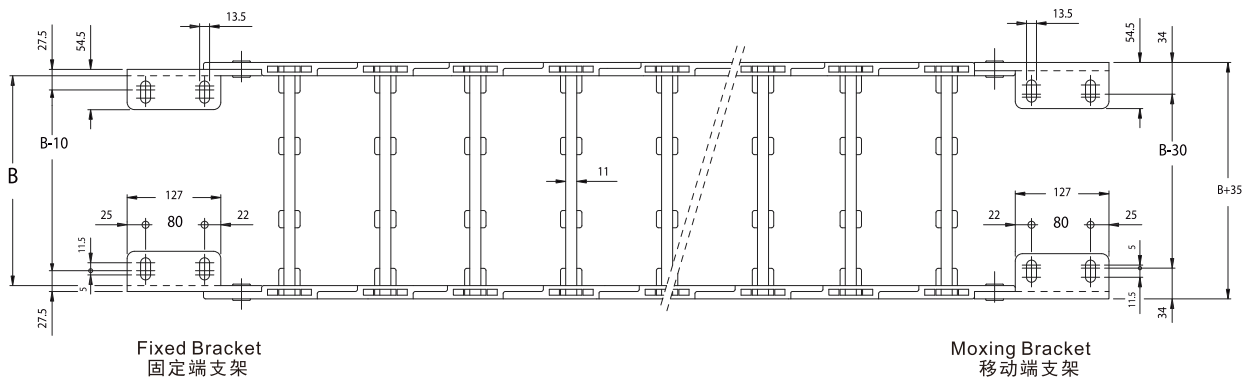
R	145	200	250	300
H	400	510	610	710

#### Divider(隔板)

Cable/Hose dmax	Ø75				
Frame Dimen. "B"	200	250	300	350	400
Divider Min.No	2	3	4	5	6
Divider Max.No	4	5	6	8	10



#### Brackets(端接头)





How To Order (型号表示方法)

HSSP 100S - 300R - B300 - D:3 - 24900L - 3SETS

Type  
型号

Radius  
弯曲半径

Width  
幅

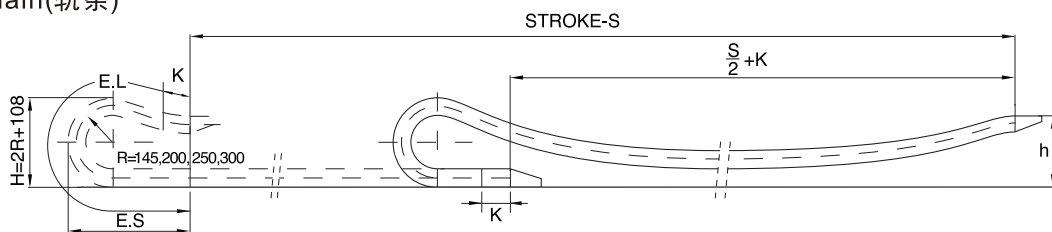
Divider  
分割

Length  
使用长度

Q'ty  
订货量

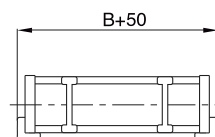
Dimensions(mm)(外形尺寸图(毫米))

Chain(轨条)

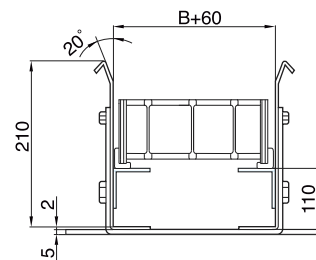
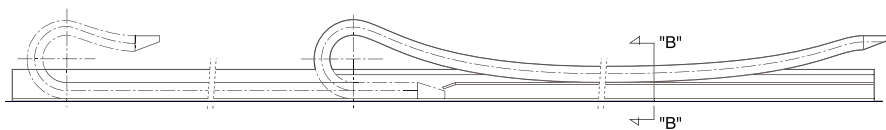


- Length(拖链长度)  $L=S/2+E. L+300$
- Radius(弯曲半径)
- Height(高度)
- Moving Point Height
- Extra Length
- Extra Space

R	145	200	250	300
H	400	510	610	710
h	300	300	300	300
E.L	1400	1700	2300	2800
E.S	730	850	1070	1300



Guide Rail(导向轨)



Guide Roller(导辊)

